



ENDGAME STUDIES

Combining beauty and practicality, the Endgame Study is one of the unique and subtle wonders of the Royal Game. **The Chess Cafe** is pleased to present, on a weekly basis, a selected endgame study for your enjoyment.

The Complete Studies of Genrikh Kasparyan

A.J. Roycroft, editor

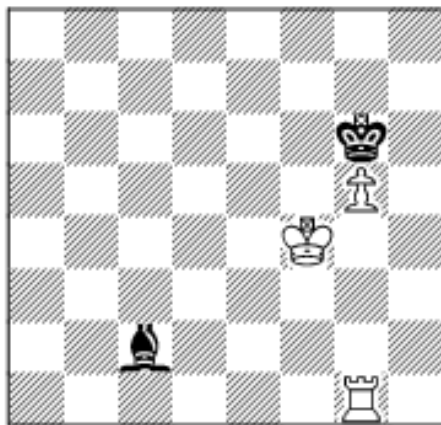
This 300+ page softcover edition contains all known 545 studies by the one of the greatest endgame study composers of all time. Biographical information, photographs and additional material by John Roycroft supplement the studies. The result is one of the outstanding collection of

Unless specifically designated otherwise, it is always White to move. Unlike problems, studies usually do not require a solution in a pre-determined number of moves. Simply look for the best moves and replies to work out the win or draw. And don't be discouraged if at first you don't succeed - working out the solution will be satisfying - even instructive!

The current study is presented immediately following. Items in our Archives, including this week's selection, are available for you to download.

**The solution to this week's Endgame Study
may be found farther down the page.**

Endgame Study #442



L. Centurini

*La Nuova Rivista degli
Scacchi*

1875

Win

endgame studies ever published. Suggested retail price is \$39.95, but it is offered directly from the publisher at the special price of **\$24.95** (\$19.95 for USCF Members!)



If you are interested in endgame studies, look into the premier international endgame study magazine EG. To subscribe, 25 euros or the equivalent in USD may be sent to Marcel van Herck, Brialmontlei 66 B 2018 Antwerpen, Belgium arves@skynet.be Payment is also possible via Paypal to this e-mail address.

[Order](#)

Solution to This Week's Endgame Study

1 Rg2 Bd3/i 2 Rd2 Bb1 3 Rd6+ Kg7 4 Kg4 Be4 5 Rd4 Bg2/ii 6 Rd7+ Kg6 7 Rd6+ Kg7 8 g6 Kh6 9 Kf5 Bh3+ 10 Kf6 1-0

i) 1... Bf5 2 Rd2 Bc8 3 Rd6+ Kg7 4 g6 Kh6 5 Rd8 Be6 6 Ke5.

ii) 5... Bh7 6 Rd7+ Kg6 7 Rd6+ Kg7 8. Kh5; 5... Bc6 6 Kf5 Be8 7 Rd6 Ba4 8 g6 Bc2+ 9 Kg5.



[\[Chess Cafe Home Page\]](#) [\[Book Review\]](#) [\[Columnists\]](#)
[\[Endgame Study\]](#) [\[The Skittles Room\]](#) [\[Archives\]](#)
[\[Links\]](#) [\[Online Bookstore\]](#) [\[About The Chess Cafe\]](#) [\[Contact Us\]](#)

Copyright 2004 CyberCafes, LLC. All Rights Reserved.
"The Chess Cafe®" is a registered trademark of Russell Enterprises, Inc.