



## ENDGAME STUDIES

Combining beauty and practicality, the Endgame Study is one of the unique and subtle wonders of the Royal Game. **The Chess Cafe** is pleased to present, on a weekly basis, a selected endgame study for your enjoyment.

### The Complete Studies of Genrikh Kasparyan

A.J. Roycroft, editor

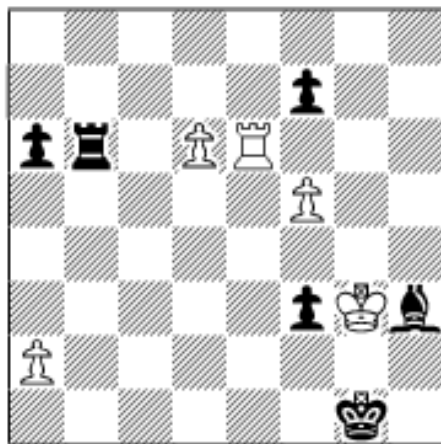
This 300+ page softcover edition contains all known 545 studies by the one of the greatest endgame study composers of all time. Biographical information, photographs and additional material by John Roycroft supplement the studies. The result is one of the outstanding collection of

Unless specifically designated otherwise, it is always White to move. Unlike problems, studies usually do not require a solution in a pre-determined number of moves. Simply look for the best moves and replies to work out the win or draw. And don't be discouraged if at first you don't succeed - working out the solution will be satisfying - even instructive!

The current study is presented immediately following. Items in our Archives, including this week's selection, are available for you to download.

**The solution to this week's Endgame Study  
may be found farther down the page.**

### Endgame Study #446



T. Balo

Sachova Skladba

1988

*Win*

endgame studies ever published. Suggested retail price is \$39.95, but it is offered directly from the publisher at the special price of **\$24.95** (\$19.95 for USCF Members!)



If you are interested in endgame studies, look into the premier international endgame study magazine EG. To subscribe, 25 euros or the equivalent in USD may be sent to Marcel van Herck, Brialmontlei 66 B 2018 Antwerpen, Belgium [arves@skynet.be](mailto:arves@skynet.be) Payment is also possible via Paypal to this e-mail address.

## [Order](#)

---

### Solution to This Week's Endgame Study

**1 d7 f2 2 d8Q Rb4 3 Qd1+ f1Q 4 Re1 Rg4+ 5 Qxg4 Qxe1+ 6 Kxh3+ Kf2 7 Qg3+ Ke2 8 Qxe1+ Kxe1 9 Kg4 Kd2 10 Kg5 Ke3/i 11 f6 Ke4 12 Kh6 Kf5 13 Kg7 Ke6 14 a3 a5 15 a4 and wins.**

**i) 10...Kc3 11 Kf6 Kb2 12 Kxf7 Kxa2 13 Ke6 a5 14 f6 a4 15 f7 a3 16 f8Q**



[\[Chess Cafe Home Page\]](#) [\[Book Review\]](#) [\[Columnists\]](#)  
[\[Endgame Study\]](#) [\[The Skittles Room\]](#) [\[Archives\]](#)  
[\[Links\]](#) [\[Online Bookstore\]](#) [\[About The Chess Cafe\]](#) [\[Contact Us\]](#)

Copyright 2004 CyberCafes, LLC. All Rights Reserved.  
"The Chess Cafe®" is a registered trademark of Russell Enterprises, Inc.