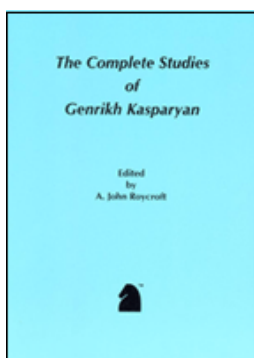




## ENDGAME STUDIES



[Order](#) *The Complete Studies of Genrikh Kasparov*  
 Edited by A.J. Roycroft

This 301 page softcover edition contains all 545 known studies by the one of the greatest endgame study composers of all time. Biographical information, photographs and additional material by John Roycroft supplement the studies. The result is one of the outstanding collection of endgame studies ever published. It is available at the special price of **\$19.95** for USCF Members!



Play through and download the games from [ChessCafe.com](#) in the [DGT Game Viewer](#).

[The Complete DGT Product Line](#)

Combining beauty and practicality, the Endgame Study is one of the unique and subtle wonders of the Royal Game. [ChessCafe.com](#) is pleased to present, on a weekly basis, a selected endgame study for your enjoyment.

Unless specifically designated otherwise, it is always White to move. Unlike problems, studies usually do not require a solution in a pre-determined number of moves. Simply look for the best moves and replies to work out the win or draw. And don't be discouraged if at first you don't succeed - working out the solution will be satisfying - even instructive!

The current study is presented immediately following. Items in our [Archives](#), including this week's selection, are available for you to download.

<b>The solution to this week's Endgame Study may be found further down the page.</b>	
<b>Endgame Study #560</b>	
	<p style="text-align: center;"><b>J. De Villeneuve Esclapon</b></p> <p style="text-align: center;"><i>L'Echiquier de France</i></p> <p style="text-align: center;">1908</p> <p style="text-align: center;"><i>Win</i></p>

If you are interested in endgame studies, look into the premier international endgame study magazine *EG*. To subscribe, 25 euros or the equivalent in USD may be sent to Marcel van Herck, Brialmontlei 66 B 2018 Antwerpen, Belgium [arves@skynet.be](mailto:arves@skynet.be) Payment is also possible via Paypal to this e-mail address.



### Solution to This Week's Endgame Study

1 Nb4/i Kxb4 2 h7 Be5 3 Kxe5 a2 4 Be1+ Kb3 5 Bc3 Kxc3 6 h8Q a1Q 7 Kf4+ 1-0

i 1 h7 Be5 2 Kxe5 a2.

 [TOP OF PAGE](#)

 [HOME](#)

 [COLUMNS](#)

 [LINKS](#)

 [ARCHIVES](#)

 [ABOUT THE  
CHESS CAFE](#)

[\[ChessCafe Home Page\]](#) [\[Book Review\]](#) [\[Columnists\]](#)  
[\[Endgame Study\]](#) [\[The Skittles Room\]](#) [\[Archives\]](#)  
[\[Links\]](#) [\[Online Bookstore\]](#) [\[About ChessCafe.com\]](#) [\[Contact Us\]](#)

© 2007 CyberCafes, LLC. All Rights Reserved.  
"ChessCafe.com®" is a registered trademark of Russell Enterprises, Inc.