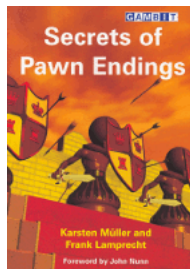




Endgame Studies



CHESS THEATRE

Play through and download the games from [ChessCafe.com](#) in the [DGT Game Viewer](#).



Combining beauty and practicality, the **Endgame Study** is one of the unique and subtle wonders of the Royal Game. [ChessCafe.com](#) is pleased to present, on a weekly basis, a selected endgame study for your enjoyment.

Unless specifically designated otherwise, it is always White to move. Unlike problems, studies usually do not require a solution in a pre-determined number of moves. Simply look for the best moves and replies to work out the win or draw. And don't be discouraged if at first you don't succeed – working out the solution will be satisfying – even instructive!

All endgame studies are available for download in the [ChessCafe.com Archives](#).

Endgame Study #707	
<p>[FEN "8/8/3pk3/K1p1p1/2P1P1P1/5P2/8/8"]</p>	<p>C. Childress</p> <p><i>Texas A&M</i></p> <p>1991</p> <p><i>White to Play</i></p>

If you are interested in endgame studies, look into the premier international endgame study magazine *EG*. To subscribe, 25 euros or the equivalent in USD may be sent to Marcel van Herck, Brialmontlei 66 B 2018 Antwerpen, Belgium arves@skynet.be Payment is also possible via Paypal to this e-mail address. The complete PDF archives of [EG Volumes 1-152](#) are available here.

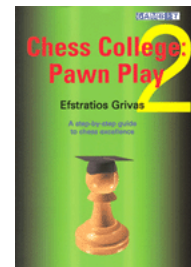


Solution to This Week's Endgame Study

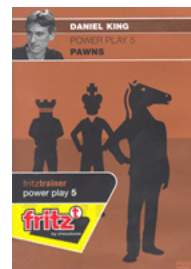
1.Ka6! [1.Kb6? Kf6 2.Kc6 Ke6 3.Kc7 Ke7] **1...Ke7 2.Ka7! Ke6 3.Kb8 Kf7 4.Kb7 Kf6 5.Kc8 Ke7 6.Kc7 Ke6 7.Kd8 Kf6 8.Kd7 1-0**

Comment on this week's Endgame Study via our [Contact Page](#).

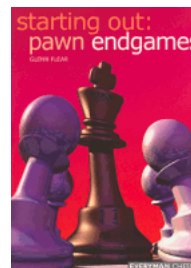
Purchases from our [chess shop](#) help keep [ChessCafe.com](#) freely accessible:



Chess College 2: Pawn Play
by Efstratios Grivas



Power Play 05: Pawns
by Daniel King



Starting Out: Pawn Endgames
by Glenn Flear