



## COLUMNISTS

**Checkpoint**

Carsten Hansen

**Reviewed this month:**

*French Classical*  
by Byron Jacobs

*Caro-Kann 3 f3*  
by Jan Pinski & Rafal Przedmojski

*New in Chess Yearbook 60*  
by Genna Sosonko,  
Paul van der Sterren *et al.*

**Special Feature**  
**Chesspublishing.com**  
Part 2

## Classical Lines

Before getting to the book reviews, I would like to pay a private tribute to an entertaining man and chess player, Tony Miles. With his sad and all too early passing, we are all left with the memories of a man who was something out of the ordinary. My first encounter with Miles was in the mid-eighties when he visited my chess club in Soendersoe, Denmark to play a simul. He beat me easily, but what stuck in my head was a joking comment to the question about whether he ever thought he would become World Champion. He remarked, to become World Champion, you have to think about chess 24 hours a day, he liked no more than 24 minutes!



Later on in 1991, when I toured in the European open circuit, I got to spend some more time in his company: at the chess club in Oostend, Belgium, where he enthusiastically showed interesting games, shared stories and a pint of beer; at the open in Forli, Italy, where he had a good tournament until he lost a crucial game against my 16-year old friend, Steffen Pedersen, who scored his first GM-norm on that occasion. However, he fascinated me with the ease he beat solid IMs, such as in the following game:

**IM Belotti (2460) - GM Miles (2585) [B00] Forli (4), 1991**  
**1.e4 b6** (This opening was a favourite of Miles' back then. In the games on my base from 1991, he scored a perfect 8/8 with it!) **2.d4 Bb7 3.Bd3 e6 4.Nf3 c5 5.c3 Nf6 6.Nbd2 Be7 7.0-0 cxd4 8.cxd4 Ba6 9.Bxa6 Nxa6 10.e5 Nd5 11.Ne4 0-0 12.Bg5 f6 13.exf6 gxf6!?** **14.Bh6 Rf7 15.Rc1 Kh8 16.a3?!** (After the game, Miles commented that this move was huge mistake. Belotti looked puzzled and asked why? Miles pointed out the fatal weakness of the b3-square; this, we will see later, came to pass...) **16...Nac7 17.Nfd2?** (To me it appears that White is playing without a proper plan, and therefore his next few moves are rather pointless and merely serve to help Black obtain an edge) **17...Qg8 18.Qh5 Qg6 19.Qxg6 hxg6 20.Be3 Rh7 21.Nc3?** (Clearly Belotti doesn't know his Dvoretzky. Here he goes against the principle of the superfluous piece: the knights on c7 and d5 are contending for the same square and therefore should be left alone, since White cannot win any influence on the d5-square by exchanging one set of knights...) **21...f5 22.Nxd5 Nxd5**





So the question is, does this book do the job? At first glance the book looks alright. I made a quick search on my database of the players rated 2450+ playing this line in 2000/2001, and the list of proponents on the Black side is quite impressive: Khalifman, Morozevich, Kortchnoi, Anand, Morozevich, Shirov, Speelman, Bareev, Short, M.Gurevich, Topalov and Radjabov are some of the many familiar names that pop up on my screen.

The material is divided as follows

- Introduction (2 pages)

### **Part One: Main Line with 4 e5 Nfd7**

- 1 Modern Main Line with 5 Nce2 (19 pages)
- 2 Old Main Line with 5 f4 c5 6 Nf3 Nc6 7 Be3 cxd4 8 Nxd4 (21 pages)
- 3 Old Main Line with 5 f4 c5 6 Nf3 Nc6 7 Be3 a6 (12 pages)
- 4 Old Main Line: Other Variations after 5 f4 c5 6 Nf3 (10 pages)

### **Part Two: 4 Bg5**

- 5 The Burn Variation with 4...dxe4 5 Nxe4 Be7 (17 pages)
- 6 The Burn Variation with 4...dxe4 5 Nxe4 Be7 6 Bxf6 gxf6 (11 pages)
- 7 Main Line with 4...Be7 5 e5 Nfd7 (37 pages)
- 8 The McCutcheon Variation: 4...Bb4 (22 pages)

### **Part Three: Other Variations**

- 9 Odds and Ends (19 pages)

The coverage of the material appears satisfactory, and looking through the Index of Complete Games at the end of the book, it appears that the author wanted the material to be

as up-to-date as possible: only two of the games were played before 1990, and the vast majority of the games have been played the last 3-4 years.

To evaluate the coverage I compared Jacobs' work with the most recent edition of ECO C (Sahovski Informator 2000) and the games I could find from 1999 thru 2001 on my database.

The introduction, unlike other books, really doesn't introduce us to anything, other than commenting a bit on the current popularity of the classical French. No positive surprises here.

Chapter one is fairly uneventful. All the games with this line I had on my base could be found in this chapter, but I noted the almost complete lack of individual suggestions by Jacobs. Browsing through the rest of the book, I unfortunately found that this is a problem that is consistent throughout the book. Big minus. My compatriot Soren Sogaard in his own review of the present book pointed out that the annotations to game 1, Anand-Shirov, FIDE k.o. World Ch, Tehran 2000, are quite incompetent if you compare them to Anand's own. Sogaard also found problems in the annotations to Anand-Bareev, Shenyang 2000 and to Kasparov-Shirov, Astana 2001.

Another bad trait I have found is that the annotations to the games do not follow a natural line. An example is game 22 and 23. Game 22, De Firmian-Hübner, Polanica Zdroj 1995, starts by giving the moves 1 e4 e6 2 d4 d5 3 Nc3 Nf6 4 e5 Nfd7 5 f4 c5 6 Nf3 Nc6 7 Be3 cxd4 8 Nxd4 Qb6 9 Qd2 Qxb2 10 Rb1 Qa3 11 Bb5 Nxd4 12 Bxd4 Bb4 13 Rb3 without any comments. Then to game 23, Fedorov-Volkov, St. Petersburg 1997, which follows game 22 to move 11, he comments to White's 9th move: "This is certainly the critical test of Black's idea as the alternatives do not seem to promise much..." and then discusses the 9th move alternatives. Furthermore, in the comments to the 11th move, 11...Ndb8,

he writes: "Highly dangerous is 11...Nxd4 12 Bxd4 a6 13 Bxd7+ Bxd7 14 Rb3 Qe7 15 Rxb7 which leaves Black way behind in development." This is very inconsistent. At a minimum these two games should have been switched. Similar mishaps can be found in other chapters.

As mentioned above, Jacobs doesn't make a lot of suggestions of his own, but let's take a look at one I did find.

The example is from chapter 4: **1 e4 e6 2 d4 d5 3 Nc3 Nf6 4 e5 Nfd7 5 f4 c5 6 Nf3 Nc6 7 Be3 Qb6 8 Na4 Qa5+ 9 c3 c4 10 b4 Nxb4!? 11 cxb4 Bxb4+ 12 Kf2 b5**



as played in Sek-Nizialek, Porabka 1987. Here Jacobs gives: "...is hard to refute, but I suspect that it's not quite sound: 13 Nc5! Bxc5 14 dxc5 Bb7 15 Qd4 b4 (15...Rc8 16 c6 Bxc6 17 Qxa7 Qxa7 18 Bxa7 only gives Black two pawns in the ending) 16 Be2 Bc6 (again 16...Rc8 17 c6 Bxc6 18 Qxa7 must be preferable for


White) and it's not clear how White can use his extra piece, although he has many options and he must be better. Perhaps 17 Nd2 0-0 18 Bf3 Bb5 19 Rhb1 is a good start."

Well, well. There is a lot to say. 13 Nc5 isn't necessarily White's best, throwing in 13 a3 Be7 before 14 Nc5 is worth considering.

Instead of 13...Bxc5, Black should play 13...Nxc5 14 dxc5 Bd7. In the position after 15 Qd4 b4, White should play 16 f5!. After 16...exf5 17 Ng5 (17 e6 fxe6 18 Qxg7 0-0-0 will end being more difficult for White) 17...0-0 18 Bxc4 f4 19 Bxf4 h6 20 Nh3 dxc4 21 Qxd7 Qxc5+ 22 Be3 Qc8 23 Rhd1 White is clearly better.

With that in mind, the coverage in general is satisfactory

although many of the less fashionable lines are either not mentioned or very sparsely covered. This is the usual author's dilemma: what to include and what not. Personally, I think too many sidelines are missing, and often the emphasis has been put on the fashionable. From an author's point of view this is the most interesting course to take, investigating the paths of the chess greats. But this book is not aimed at GMs or for that matter IMs. There are far too few independent ideas and analysis from the author to have any appeal to this group. Even with the focus on the fashionable lines, the not-so-strong players will find it difficult to connect with the material in their own games, because nobody at their level will know these lines. This leads me to the inevitable conclusion that this book will not have much of an audience. However, should you have interest in this line with either colour there is at present not any alternative to this book, so you may want to get it anyway.

**My assessment of this book:** 

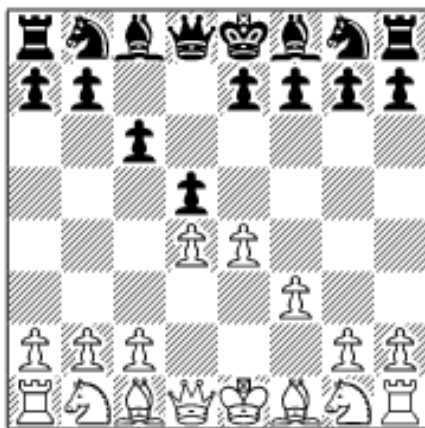
---

*Caro-Kann 3 f3* (QuickSurvey Series, ChessCafe Reader e-book) by Jan Pinski & Rafal Przedmojski, 2001 ChessCafe.com, English Algebraic Notation, \$9.95

The present CCR-book is the second opening book in the ChessCafe Reader format and in the ChessCafe QuickSurvey Series.. The authors of this e-book may not be familiar to most people. I myself only learned of IM Pinski with the arrival of his and IM Aagaard's recent book on the Kalashnikov Sicilian. About co-author I still know fairly little, but I found some 110 games with him on my database, the most recent ones from 2000 where he was rated 2349.

**Quick  
Survey**

It was Smyslov that brought the featured variation – **1 e4 c6**  
**2 d4 d5 3 f3!?** –



into the limelight by using it against, amongst others Botvinnik in one of the World Championship matches. Nowadays the line is not seen particularly often, as Black supposedly can obtain satisfactory play in several lines. The question is of course how many know these lines; not many

is my guess. Therefore, the surprise value of this line can well be worth a lot of points in your games against the otherwise very solid Caro-Kann Defence.

When browsing through the lines in the present book it immediately becomes apparent that the authors have added substantially to the existing theory of this line.

According to the authors, as well as ECO B and NCO, 3...e6 is most likely Black's best option, so let's take a look at this line.

After **3...e6**, White has two options: **A) 4 Be3** and **B) 4 Nc3**:

**A) 4 Be3** is condemned by ECO, quoting an analysis by Seirawan: 4...dxe4 5 Nd2 exf3 6 Ngxf3 (NCO ends the coverage here, giving "with compensation for pawn") 6...Nf6 7 Nc4 Nbd7 8 Bd3 (so far Smyslov-Kan, Sverdlovsk 1943), and now 8...Be7 with a slight edge for Black, who intends to follow up with ...0-0, ...b6 and ...Bb7. The authors of the present book allow themselves to disagree, analyzing both 9 Nce5 and 9 Bg5. According to the authors, 9 Nce5 is likely to lead to a draw after 9...c5 10 Bd3 Nd5 11 Qe2 0-0 (CH: 11...Nxe3!/? strikes me as an attractive alternative not discussed by the authors) 12 Bxh7+ Kxh7 13 Ng5+ Bxg5 14 Qh5+ Bh6 15 Rxf7 Nxe3 (CH: 15...Rxf7 seems more

critical, e.g. 16 Qg6+ Kg8 17 Qxf7+ Kh8 18 Bxh6 Qg8 or 18...Qf6 and White has to find a way to justify his investment) 16 Rxc7+ Kxc7 17 Qg6+ with a perpetual. The alternative 9 Bg5 looks more promising, e.g. 9...c5 (CH: 9...h6 followed by ...c5 is also worth considering) 10 Qe2 cxd4 11 Nxd4 Nc5 12 0-0-0 Nxd3+ (CH: 12...Nd5!? may improve) 13 Rxd3 with initiative for White.

**B) 4 Nc3** is considered the main line by both the ECO and NCO. After 4...Bb4 5 Bf4 Nf6 6 Qd3 b6 (also 6...0-0 and 6...Qa5 are considered in the book) 7 Nge2 (7 0-0-0 is also covered) 7...Ba6 8 Qe3 0-0 9 0-0-0 c5 (at this point the authors also analyze 9...Be7, but for some reason fail to mention 9...Nbd7, which is mentioned in the otherwise very light coverage in ECO) 10 a3 cxd4 11 Nxd4 Bxc3 12 Qxc3 Bxf1 13 Rhxf1 Qc8! = according to the ECO, but the authors disagree, claiming an edge for White, though without giving any analysis to back up their claim. I think they are right, but they could have given a few moves to illustrate how they think White should continue, e.g. 14 Qxc8 Rxc8 15 Nb5!? a6 16 Nc3 with a lead in development for White.

The above examples show that there are some holes in their coverage, but also that they are not unwilling to risk their necks going against the general standpoint that Black is fine.

The material in the book is very much up-to-date, citing games from 2001, while the ECO's (from 2001) most recent example is back from 1994. This means that a lot of the material presented by the authors is not available elsewhere and therefore may give White players an advantage over their opponents who will not have access to the same information.

In general, the authors have done a very decent job in their coverage of this little-played, but highly interesting line in the Caro-Kann. There are holes here and there, but armed with lines covered in this book, White players rated up to

about 2000-2100 will be well equipped to battle the Caro-Kann, and stronger players should also be able to find plenty of worthwhile ideas for both sides.

**My assessment of this e-book:** 

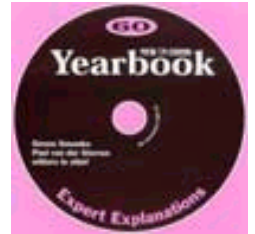
[Order](#) *Caro-Kann 3 f3*

by Jan Pinski & Rafal Przedmojski

---

*New in Chess Yearbook 60* by Genna Sosonko, Paul van der Sterren et al., 2001 *New in Chess*, Figurine Algebraic Notation, CD-ROM, \$23.95

Initially, a big congratulations to our friends at *New in Chess* on this their 60th yearbook. The format has been changed a couple of times, but apparently for the better. The yearbook is nowadays a very attractive product with many worthwhile features, as my last couple of reviews of them have pointed.



However, no two volumes are anywhere near the same since the contributors and subjects vary from volume to volume. This time around the material is divided as follows:

- Sicilian Defence - 9 surveys (+7)
- French Defence - 5 surveys (+7)
- Caro-Kann Defence - 5 surveys (+12)
- Ruy Lopez - 2 surveys (+3)
- Scotch Opening - 1 survey (+1)
- Queen's Gambit Declined - 3 surveys (+2)
- Slav Defence - 5 surveys (+19)
- Tarrasch Defence - 1 survey (+1)
- Queen's Gambit Accepted - 1 survey (+1)
- Nimzo-Indian Defence - 2 surveys (+2)
- Queen's Indian Defence - 1 survey
- King's Indian Defence - 1 survey (+1)

- Benoni Defence - 2 surveys (+3)
- Old Indian Defence - 1 survey
- Queen's Pawn Opening - 1 survey (+1)

The number in parentheses represents the number of surveys from previous volumes on the same subject that have been included for free on this CD, this time around 60 in total, which makes this CD quite attractive compared to the book version, which I normally prefer.

A new and very attractive feature is the addition of the Rebel Analysis Engine, which allows you to analyse the many games with a strong engine. Getting something for free should always be a good thing, but I find it a bit annoying that you cannot analyze your own moves, but have to settle for the moves played in the games available. So you cannot dive into an interesting position with the assistance of the engine in this program, and that sort of defeats the purpose of having an engine available.


As usual there are several worthwhile surveys, while there are a few less interesting ones too. Nonetheless, despite their varying quality, they all manage fulfill the basic idea of showing an interesting game with some additional material as well.

In addition to the opening surveys, there are other interesting features, such as Sosonko's Corner. This time he discusses novelties that refute an entire line. His examples include a game where he misses out on such an opportunity himself, only to see somebody else find the refutation. These articles by Sosonko, just like the ones you can find in *New in Chess Magazine*, are a real pleasure to read, every time.

The readers of the Yearbooks may also submit contributions to the Forum. There are a couple of interesting letters this time around. One letter continues the discussion regarding Hans Berliner's "refutation" of the Gruenfeld Indian in his

book *The System*. According to the letter, Black is at least okay. A.C. van der Tak added in a postscript to the letter that John Watson has reached a similar conclusion in an article in the excellent German magazine *Kaissiber*. Other letters, mainly from the editorial group from the Yearbook, present other interesting novelties all in one way or another linked to the theme of Sosonko's aforementioned article.

Giving a definite assessment of a yearbook is always difficult, but if you are eager student of opening theory, the *New in Chess Yearbooks* should be as high priority for you as the Informators and the weekly game downloads from TWIC.

My assessment of this CD: 

---

**Special Feature**  
**Chesspublishing.com - Part 2**



### ***Anti-Sicilians* by IM Gary Lane**

Here is a name that hopefully is familiar to most people. Gary Lane is the man behind the highly popular *Opening Lanes* here at **ChessCafe.com**. A few months back I reviewed Lane's very good book on the Colle.

Lane has divided his monthly updates up into two sections: What's Hot and What's New. Each section usually contains 4-5 games and the topics vary from month to month. This month he is looking at 1 e4 c5 2 Nf3 d6 3 Bb5+ Nd7 in the What's New section, and 1 e4 c5 2 Nc3 Nc6 3 Bb5!? in the What's Hot section. The text in both sections is a bit chatty, but fairly humorous, although lacking somewhat in actual value. However, Lane more than makes up for this in his game annotations that usually are quite thorough, instructive and entertaining. A good example is the following game from the most recent update.

## **Chandler, M (2540) - Gallagher, J (2516) B51 British Championship Scarborough (8), 07.08.2001**

**1.e4 c5 2.Nf3 d6 3.Bb5+ Nd7 4.d4 Ngf6 5.Nc3 cxd4**

In his book *Beating the Anti-Sicilians* Gallagher recommended 5...a6 but does not play it himself. One of the reasons is that in time opening books do date and this is the case here. If you want to score a few easy points against people who have not changed their books then the following encounter is important. 5...a6 6.Bxd7+ Nxd7 7.0-0 e6 8.Bg5 Qc7 9.Re1 cxd4 10.Qxd4 Ne5 11.Na4! h6 12.Nb6 Rb8 13.Bd2 Be7 14.Ba5 Bf6 15.Nxe5 Bxe5 16.Qb4 0-0 17.f4 Bxb2 18.Rad1 Bf6 19.Nd5 Qc5+ 20.Qxc5 dxc5 21.Nxf6+ gxf6 22.Bb6 Re8 23.Re3 1-0 P.Nielsen-S.Pedersen, Copenhagen 1998.

**6.Qxd4 e5 7.Qd3 h6**

Black takes time to stop Bg5, which would help White to exert control over the important d5 square.

**8.Be3 Be7 9.Bc4**

Some moves are a matter of taste. In this case, Chandler does not want Black to easily expand his queenside pawns with ..a7-. a6 and ...b7-b5 so makes an effort to stop the possibility.

In a previous game at the tournament Gallagher had faced the ambitious 9.0-0-0!? when White failed to start the anticipated kingside attack. 9...a6 10.Ba4 b5 11.Bb3 Bb7 12.h3 Rc8! 13.Nd5 Bxd5 14.Bxd5 Nxd5 (perhaps 14...Qc7!? could be considered) 15.Qxd5 Qc7 16.Qd3 Nf6 17.Kb1 0-0 18.Nh4 Rfd8 19.Nf5 Bf8 20.Bc1 d5 21.exd5 Nxd5 22.Qe2 b4 23.Ne3 Nf4 24.Qxa6 Rxd1 25.Rxd1 Nxc2 26.Qa4 Nxe3 27.Bxe3 Rd8 28.Rxd8 Qxd8 29.Qc6 Qd1+ 30.Bc1 Qf1 31.Qf3 Bc5 32.Qa8+ Kh7 33.Qe4+ g6 34.Qxe5 Qxf2 35.a4 bxa3 36.bxa3 Bd4 37.Qd5 Bg7 38.Bb2 Qb6 ½-½ M.Walker-J.Gallagher, British Championship, Scarborough 2001.

**9...a6 10.a4**

It now becomes clear why the light-squared bishop was

retreated because now it is easier to restrain Black's queenside pawns.

### **10...Qc7 11.0-0 Nc5**

11...0-0 The following heavyweight encounter saw a different approach by Black: 12.Nd2 Rb8!?! (12...Nc5 ; 12...b6 have also been tried here.) 13.a5 Nc5 14.Qe2 Be6 15.Bxe6 Nxe6 (15...fxe6 seems O.K because it opens the f-file for the king's rook and exerts control over the d5 square but 16.Qc4 is good for White due to the weakness of the e6 pawn.) 16.Ra4 Qc6 17.Rc4 Qd7 18.Rd1 Bd8 19.Ra4 d5! (19...Rc8 20.Raa1 Qc6 21.Qd3 and White is better.) 20.exd5 Nxd5 21.Nde4 (21.Qd3 has been suggested) 21...Nxc3 22.Nxc3 Qe8 23.b3 Rc8 (23...f5 24.Nd5 is fine for White) 24.Nd5 Nd4 25.Bxd4 exd4 26.Qd3 Kh8?! (26...Qe5 27.Rxd4 Re8 28.c4 Bxa5 29.g3 offers equal chances) 27.Rxd4 Bxa5 28.Re4 Qd7 29.Re7 Qc6 30.c4 White has a slight edge but it is hard work to convert it into victory. 30...Rce8 31.g3 Bd8 32.Rxe8 Rxe8 33.Qf3 Kg8 34.Kg2 Bc7 35.Rd4 Re6 36.Re4 Rxe4 37.Qxe4 Bd6 38.h4 Bf8 39.h5 Qd7 40.Qe5 b5 41.Qe4 1/2-1/2 M.Adams-Svidler, FIDE Ch New Delhi/Theran 2000.

### **12.Bxc5 Qxc5 13.Rab1!?**

13.Nd5 is more usual when 13...Nxd5 14.Bxd5 0-0 gives White a slight edge.

### **13...Be6 14.Nd2 Rc8 15.Bxe6 fxe6 16.Qh3 Kf7**



A special move that allows the king to protect e6. White's task now is to open lines in order to take advantage of the vulnerable monarch.

**17.Nb3 Qc7 18.Kh1 g5 19.Rbd1 h5 20.Qd3 Qb6 21.Qe2 Qb4!**

Black wishes to play ...b7-b5.

### **22.Rd3**

If 22.a5 to lock up the queenside then Black can resort to a standard Sicilian exchange sacrifice to ruin White's pawn structure. For instance: 22...Rxc3 23.bxc3 Qxe4

### **22...b5 23.axb5 axb5 24.h4 g4**

24...gxh4 25.f4 Rxc3 26.Rxc3 Nxe4 27.fxe5+ Kg7 28.exd6 Bxd6 29.Qe3 Ng3+ 30.Kg1 Nxf1 31.Qg5+ Kh7 32.Qxh5+ Kg7 33.Qg5+ Kh7 is at least a draw while 34.Rf3 is difficult for Black to judge from the distance of move 24!

### **25.f4 Qc4 26.Nd2**

In time-trouble 26.f5 looks dangerous for Black. 26...b4 27.fxe6+ Kxe6 28.Nd5 Nxe4! 29.Kh2 g3+ obvious but it can lead to ruin 30.Kg1 Nf2 31.Nb6 Qxh4 32.Nd4+ Kf7 33.Rxg3 Qxg3 34.Rxf2+ Bf6 35.Nxc8 Rxc8 36.Nf5 wins

### **26...Qc5 27.f5 b4 28.fxe6+ Kxe6 29.Nd5 Nxd5 30.exd5+**

30.Rxd5 Qxc2 is in Black's favour.

### **30...Kd7 31.c3 Rhf8 32.Ne4 Qc4 33.Ra1 bxc3 34.bxc3**

34.Ra7+ Kd8! should be fine for Black.

### **34...Ra8 35.Rb1 Ra2?**

35...Rfb8 maintains Black's advantage.

### **36.Qe3 Rf4 37.Ng3?**

A mistake in Black's time-trouble. It is often the case that people try to beat Gallagher in such positions by trying to win on time but he has vast experience of playing rapidly.

Instead, 37.Nd2! Qa4 38.g3 should be enough to get a draw

### **37...Qa6?!**

The game is littered with mistakes because of time-trouble but this game helped Black to win the tournament!

37...Bxh4! would have been played with an extra hour on the clock. 38.Rb7+ Ke8 39.Qb6 Rff2 40.Qc6+ Qxc6 41.dxc6 Bxg3 42.Rxg3 Kd8

### **38.Nxh5 Ra1 39.Rxa1?**

Still time-trouble for BLACK!

39.Rdd1 Rxb1 40.Rxb1 Rf1+ 41.Rxf1 Qxf1+ 42.Kh2 Qc4 43.Kg3 Qxd5 44.Qe2 and it is White who has winning ambitions.

### **39...Qxa1+ 40.Kh2 g3+!**

The killer move that Chandler had missed.

### **41.Kxg3**


41.Nxg3 Rxh4# ; 41.Qxg3 Rxh4+ wins

### **41...Bxh4+ 42.Kh2 Bf2 43.Qxf4**

43.Qh3+ Kc7 44.Nxf4 Qg1#

**43...exf4 44.Nxf4 Qg1+ 45.Kh3 Be3 46.Ne2 Qh1+ 47.Kg3  
Qe1+ 48.Kf3 Qf2+ 49.Ke4 Bh6 0-1**

Lane's page is now good value for the money spent on the subscription, and it's my pleasure to recommend it to you, if the subject should have your interest.

**My assessment of this section:** 

---

### ***1 e4 ...* by GM Nigel Davies**

This page has a new host, but the style is quite similar.

A normal update by Davies has ten games with a quite thorough introductory text, explaining typical ideas, what to look out for, who's playing what, etc. Each month features different lines so that it's not just the most popular lines that get covered, but also the less frequently seen oddities and specialties.

I'm not sure which approach I like better, but for not-so-experienced players, Davies' approach will probably find many takers, while stronger players probably would have preferred to see some cutting-edge theory. However, these pages are generally speaking more aimed at an audience that needs a bit of guidance regarding what to play and what to avoid in the opening, although stronger players can also make good use of these updates.

Davies' game annotations are mostly verbal and reasonably instructive, although they could be more in-depth and contain more analysis. An example from the August update is the following game:

***Kasparov,G - Kaiumov,D* B10 Tbilisi Tbilisi (Georgia), 1976**

**1.e4 c6 2.Ne2 d5 3.e5 c5 4.d4 Nc6 5.c3 e6**

Some of the books give this move, quoting an old Bronstein - Petrosian game that Black happened to win.

## 6.Nd2 cxd4

The aforementioned Bronstein - Petrosian game (USSR Ch., Leningrad 1960) went 6...Nge7 7.Nf3 cxd4 8.Nexd4 (The start of a dubious plan. White should play 8.cxd4 after which 8...Nf5 transposes back into the game) 8...Ng6 9.Nxc6 bxc6 10.Bd3 Qc7 11.Qe2 f6! 12.exf6 gxf6 13.Nd4 Kf7 14.f4 c5 15.Qh5 cxd4 16.Bxg6+ hxg6 17.Qxh8 dxc3 18.Qh7+ Bg7 19.Be3 cxb2 20.Rd1 Ba6 21.f5 exf5 22.Qh3 Qc2 23.Qf3 Bc4 0-1

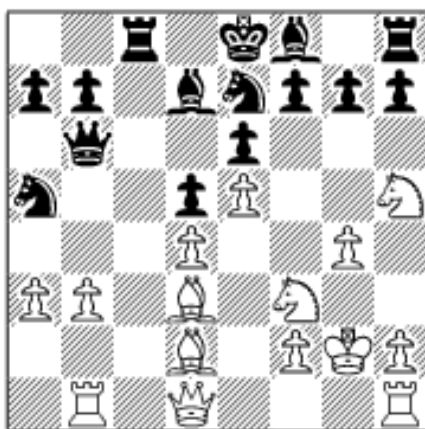
## 7.cxd4 Nh6 8.Nf3 Nf5 9.a3 Qb6 10.g4 Nfe7 11.Nf4

It's starting to look very good for White; the d4 pawn is not a problem and he has lots of space on the kingside. Black manages to generate some temporary piece activity but this doesn't amount to anything real.

11...Na5 12.Rb1 Nb3 13.Be3 Bd7 14.Bd3 Rc8 15.Bc2 Na5 16.Kf1 Nc4 17.Bc1 Bb5 18.Kg2 Qc7 19.Bd3

Threatening 20.b3. Black has to beat a hasty retreat.

19...Bd7 20.b3 Na5 21.Bd2 Qb6 22.Nh5!



The knight is just great here. Black can't do anything with his kingside; he has to defend the g7 pawn and has had all his pawn moves ruled out (...f6, ...g6 and ...h5 are all impossible)

22...Bb5 23.Bb4 Bxd3 24.Qxd3 Nac6 25.Bc5 Qa6 26.Qe3 b6 27.Bd6 Ng6 28.Bxf8 Kxf8

## 29.Rhc1

The decision, predictably enough, comes on the open c-file.

29...Qxa3 30.Rc3 Qe7 31.Rbc1 Qd7 32.b4 Nge7 33.Nf6!

Finishing the game with a few fireworks.

### **33...Qd8**

33...gxf6 34.exf6 Ng6 35.b5 is hopeless

**34.b5 Na5 35.Rxc8 Nxc8 36.Rxc8!**

36.Rxc8 Qxc8 37.Qa3+ wins Black's queen (for starters) 1-0

I think that Davies' page is quite good, but without too much extra effort, it could become even better. For inexperienced players with an interest in the openings that are covered on this page, there will be a lot to gain from a subscription, and as a reader you can try to influence Davies by sending him e-mails about the subjects you want him to cover.

**My assessment of this section:** 

---

### ***1 d4 d5* by GM Ruslan Scherbakov**

The heading on this page is not strictly accurate, since he is only covering the Queen's Gambit and Slav Defence; other Queen's Pawn Openings are covered by Summerscale in his d-pawn specials (see below).

The monthly updates each consists of 9-10 games, which mainly focus on the latest developments in the Queen's Gambit. This, however, means that a lot of the minor lines will rarely (if ever) be considered on this web page. But Scherbakov has taken this into consideration and systematically gone through most lines under the Informator codes D10-69 in the earlier updates. These remain accessible to new subscribers, so there is no reason why you shouldn't be able to catch up with theory and see what Scherbakov has to say about it.

On the other hand, for theory dogs and other people who eagerly follow the latest developments, this page is great news.

Scherbakov's game annotations are mainly based on variations and theoretical references to previously covered games. For not-so-strong players this can quickly become a little difficult to follow. An example of his game annotations is the following game:

***Yakovich, Y (2575) - Flear, G (2485) D48 10th Monarch Assurance, Port Erin IOM (2), 2001***

Glenn Flear shows an improvement in this rare line. Curiously enough, it was already indicated in his opponent's analysis but Yuri probably forgot it or just mixed something and produced a series of dubious moves which created unnecessary problems for White...

**1.c4 e6 2.d4 d5 3.Nc3 c6 4.e3 Nf6 5.Nf3 Nbd7 6.Bd3 dxc4 7.Bxc4 b5 8.Bd3 Bb7 9.0-0 a6 10.e4 c5 11.d5 Qc7 12.dxe6 fxe6 13.Bc2 Be7 14.Ng5 Qc6 15.f4**



White also tried to take target at the pawn e6 by playing 15.Qf3 h6! 16.Qh3 but it was strongly met by 16...hxg5! 17.Qxh8+ Kf7 18.Qh3 g4 19.Qh4 Ne5 with interesting compensation - we considered this line in a very beautiful game L.-B.Hansen - Illescas Cordoba, Moscow (ol) 1994 (RS38).

**15...h6 16.Nf3 0-0-0 17.Qe2 b4**

We already mentioned the text move as a possible alternative in the comments to the game Gelfand - Dreev, Biel 1995, which continued by 17...Rhf8 18.e5 Nd5 19.Nxd5 Qxd5 20.a4 b4 and now instead of 21. Be3? correct was 21.Rd1! Qc6 22.a5! with advantage, according to Boris Gelfand.

**18.e5!?**

A good intermediate move.

An inclusion of the moves 18.Ba4 Qc7 was double-edged as after 19.e5 bxc3 20.exf6 Bxf6 21.bxc3 Black gains time by 21...Nb6

**18...bxc3 19.exf6 Bxf6!**

A clear improvement over the game Yakovich - Hamdouchi, Santo Antonio 1999, where after 19...gxf6?! 20.bxc3 Black didn't have sufficient counterplay to compensate the weakness of his e6-pawn and not quite safe position of his king.

**20.bxc3 Nb6 21.Rb1?!**

The text move allows Black to win the pawn on c3. Perhaps Yuri didn't remember his own analysis?! His old suggestion was 21.Bd2 Nd5 22.Qe1 with a small advantage.

**21...Nd5 22.Bd2 Bxc3**

22...Nxc3?! was much weaker as after 23.Bxc3 Bxc3 24.Rb3 followed by Rf1-b1 White gained a certain initiative.

**23.Rxb7?!**

A doubtful decision - White doesn't have sufficient resources to create a really strong initiative. However, it maybe was an attempt to avoid the worst?! Yet, White wasn't so bad after, for example, 23.Rfe1 but, of course, he doesn't have more than just a little compensation for the pawn.

**23...Kxb7 24.Bxc3 Nxc3 25.Qc4**


Here White wisely offered a draw which was accepted. A little bit prematurely, in my opinion. Yet, White has the initiative and perhaps Black was already in too much time pressure to take risks in such an unclear situation.

By playing 25.Qe5 White could have restored the pawn balance but it spoiled the initiative: 25...Nd5 26.Qxg7+ Qc7 27.Qb2+ Ka7 and so on; Possible play

after 25.Qc4 could be 25...Nd5 26.Rb1+ Ka7 27.Ne5 (27.Nd4 Qd6 ) 27...Qc7 28.Nf7!? (28.Ba4 Rd6 ; 28.Qa4 Rd6 ) 28...Nxf4!? (the position with major pieces after 28...Ne3 29.Qc3 Nxc2 30.Qxc2 Rhf8 31.Nxd8 Rxd8 was less promising due to the vulnerable king; 28...Qxf7 leads to perpetual check: 29.Qxc5+ Ka8 30.Ba4 Rc8 31.Bc6+ Rxc6 32.Qxc6+ Ka7= ) 29.Nxh8 Rxh8 30.Be4 Rb8!? (30...Nd5 ) 31.Rc1 (after 31.Rxb8 Qxb8 the capture on c5 leads to the queens exchange) 31...Rc8 32.Rb1 Nd5 33.Bxd5 exd5 34.Qxd5 and White keeps drawish chances but Black can play for a win as long as he wants. 1/2-1/2

As you can see the narrative explanations, that we for example saw on Davies' page, are not something Scherbakov finds essential.

If I had to pick between the various ways to cover a subject, I would prefer Scherbakov's for the players rated over 2100, but the lower rated subscribers would probably prefer the approach taken by Davies, Motwani and others.

My assessment of this section: 

---

### ***d-pawn specials* by GM Aaron Summerscale**

The openings covered on this page include the Trompowsky, the Torre Attack, the Colle, the London System, the Barry Attack and many other fascinating openings, that are not seen so frequently in the games between the world's top players.

Nevertheless these openings have always been very popular amongst lower-ranked players or players that don't find it necessary to discuss the merits of the Najdorf Sicilian or Anti-Meran Gambit.

As most of the other hosts, Summerscale presents his subscribers with about ten new games each month. Given that the top players usually stay clear of these openings, Summerscale often shows games of players rated around 2000-2200. These games will surely make more sense to his subscribers than games played by strong GMs, in which deep strategic understanding may be required to figure out what's really happening.

The annotations, as you will see from the below example, are

not exactly top-heavy with analysis. This again accommodates the not-so-strong audience by verbalising the ideas rather than showing it via analysis.

*Houska,M (2284) - Khamrakulov,I (2485) A48 Open Lisbon POR (2), 22.08.2001*

Torre vs the Kings Indian. The move Ne4 is a double-edged sword for Black in the Torre King's Indian. While the knight will gain time against the dark squared bishop, its very presence in the centre means that White's natural developing moves will attack it.

**1.d4 Nf6 2.Nf3 g6 3.Bg5 Ne4**

This aggressive move is probably a little too ambitious. Black is trying to interfere with White's normal lines of development.

**4.Bf4**

4.Bh4 Retaining the pin on the e-pawn is also fine for White.

**4...Bg7 5.e3 d5 6.Nbd2**

And now we come to the problem in this line for Black. He either has to lose time with his advanced knight or permit its exchange.

**6...0-0 7.Nxe4 dxe4 8.Nd2**

The pawn on e4 becomes a target, forcing Black to weaken his kingside.

**8...f5 9.Bc4+ Kh8 10.f3**

White naturally wants to break down his opponent's central pawn barrier, which will give his pieces some more breathing space.

**10...c5 11.c3 exf3 12.Nxf3 h6**

Black has to take preventative measures in order to stop Ng5.

**13.0-0 Nd7 14.Qe1**

The White queen prepares to swing over to the kingside.

**14...Nb6 15.Bb3 c4**

Due to his weakened king position, Black has little choice but to shut out the White bishop from the a2-g8 diagonal. Unfortunately, by releasing the central tension he now finds it very difficult to drum up any counterplay.

**16.Bc2 Bd7 17.Qh4 Kh7 18.Bg5**



18.e4 Immediately was also strong.

**18...Nd5 19.e4**

The key central breakthrough. Black will find it very difficult to defend both his weaknesses on the e-file and the kingside.

**19...fxe4 20.Bxe4 Nf6 21.Rae1**

Relentless! Every single White piece is brought to bear on the poor Black king position.

**21...Qe8 22.Bb1**

Threatening Ne5.

**22...Nd5**

Black crumbles under the pressure.

22...Bf5 was his only chance, although White completely dominates the position after: 23.Bxf5 gxf5 24.Re6

**23.Bxe7 Nxe7 24.Rxe7**

The rook's arrival on the seventh rank is devastating.

**24...Qc8 25.Ng5+ Kg8 26.Rff7**

White must have really been enjoying himself by now, I certainly would have been.

**26...Rxf7 27.Nxf7 Kf8 28.Bxg6**

The Black kingside comes tumbling down like a house of cards.


**28...Qc6 29.Ne5 Bxe5 30.Rf7+**

After 30...Kg8 31.Qxh6 quickly decides matters. 1-0

Nice and easy, but clearly stronger players will want to stay clear of this page, since very little will be gained in the study of games such the above by these players.

Another weak point is a lack of reference to games previously covered in a particular opening. If a player wants for example to use the above game as the basis for his preparation for a particular game, he will have to run through bundles of updates to find what he is looking for, while a single reference could have done that for the student. As we saw above, Scherbakov is able to do that in far more theoretically sensitive openings, so I would think it should be possible for Summerscale as well.

Generally speaking, while Summerscale's coverage tends to be for somewhat weaker players, the annotations are not as well-done as Motwani or Davies, both of whom aim at an audience of about the same strength as Summerscale.

My assessment of this section: 

---

*To be continued...*

<p><i>he Ratings</i></p>
<p> — A poor book, not recommended.</p>
<p> — Not a particularly good book, but perhaps useful for some readers.</p>
<p> — A useful book.</p>
<p> — Good book, recommended.</p>
<p> — Excellent book, highly recommended.</p>

Copyright 2001 Carsten Hansen. All rights reserved.



[\[The Chess Cafe Home Page\]](#) [\[Book Reviews\]](#) [\[Bulletin Board\]](#) [\[Columnists\]](#)  
[\[Endgame Studies\]](#) [\[The Skittles Room\]](#) [\[Archives\]](#) [\[Inside Chess\]](#)  
[\[Links\]](#) [\[Online Bookstore\]](#) [\[About The Chess Cafe\]](#) [\[Contact Us\]](#)

Copyright 2001 CyberCafes, LLC. All Rights Reserved.

"The Chess Cafe®" is a registered trademark of Russell Enterprises, Inc.