

# Inside Chess

Yasser Seirawan

## Seirawan Annotates:

### Kramnik-Kasparov Novgorod 1997

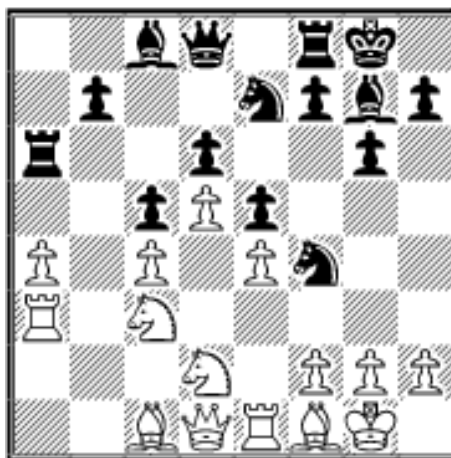
*Vladimir Kramnik-Garry Kasparov Novgorod 1997*

Orders? Inquiries? You can  
now call toll-free:

**1-866-301-CAFE**



1.Nf3 Nf6 2.c4 g6 3.Nc3 Bg7 4.e4 d6 5.d4 O-O 6.Be2 e5 7.O-O Nc6 8.d5 Ne7 9.b4 Nh5 10.Re1 Nf4 11.Bf1 a5 12.bxa5 Rxa5 13.Nd2 c5 14.a4 Ra6 15.Ra3



15...g5!?

An interesting way to solve the problem of the f4-Knight. After 15...f5 16.g3 Nh5 17.exf5, Black has problems with his recapture. With the text, Kasparov has a sacrifice in mind.

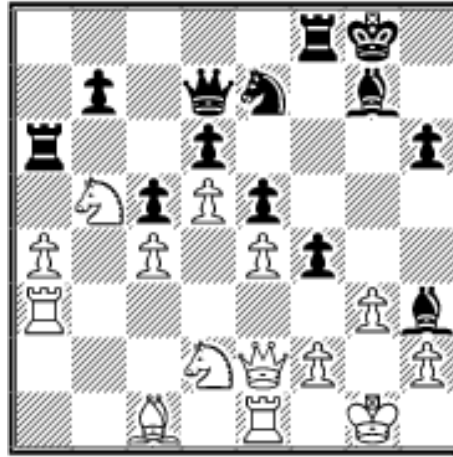
16.g3 Nh3+

Black is compelled to make this sacrifice. The position after 16...Nfg6 17.Qh5 h6 18.Bh3 is nice for White.

17.Bxh3 Bxh3 18.Qh5 Qd7 19.Qxg5

Black is forced to answer the materialist's favorite question, "So, what da ya got?"

19...h6 20.Qe3 f5 21.Qe2! f4 22.Nb5!



A very worrisome blow indeed. White is preparing to introduce his a3-Rook to the kingside. If White gains the initiative there, it's game over as he'll have total domination.

**22...Kh7**

This move turns out badly. Although after 22...Ng6

23.Kh1, preparing Re1-g1, where is Black's play?

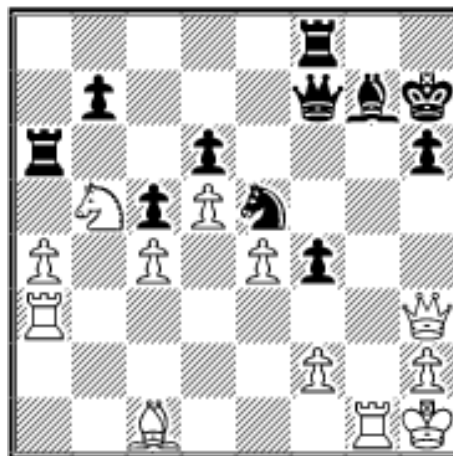
**23.gxf4! exf4 24.Kh1 Bg4**

Black has nothing to show after 24...Ng6 25.Rg1 (with the winning threat Qe2-h5) 25...Ne5 26.Nf3 when Black's position is a mess.

**25.Nf3 Ng6 26.Rg1 Bxf3+**

Effectively giving up on his attack. Kasparov wasn't interested in 26...Kh8 27.Qf1 (27.Bb2!?) when White's play on the kingside looks good.

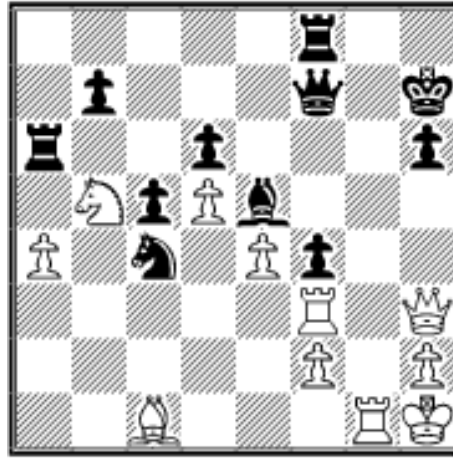
**27.Qxf3 Ne5 28.Qh5 Qf7 29.Qh3**



**29...Nxc4?**

A rare tactical oversight by the PCA Champion. White is doing well after 29...Rfa8 30.Qf5+ Qxf5 31.exf5 Rxa4 32.Rxa4 Rxa4 33.Nxd6 but there still might be kicking opportunities here. The text sends Garry for a tumble.

**30.Rf3 Be5**



### 31.Nc7!

This is what Kasparov forgot about. The game is instantly over as White's Knight rudely intrudes on the e6-square. Obviously 31...Qxc7 32.Qxh6+ allows a pleasing finish.

**31...Rxa4 32.Bxf4 1-0**

Garry didn't wait to see 32...Bxf4 33.Ne6 Rg8 34.Rxf4 Rxc1+ 35.Kxg1 Qg6+ 36.Rg4 with a winning game.

---

*This column is available in **Chess Cafe Reader** format. [Click here](#) for more information.*

---

 [TOP OF PAGE](#)

 [HOME](#)

 [COLUMNS](#)

 [LINKS](#)

 [ARCHIVES](#)

 [ABOUT THE CHESS CAFE](#)

[\[ChessCafe.com Home Page\]](#) [\[Book Reviews\]](#) [\[Bulletin Board\]](#) [\[Columnists\]](#)

[\[Endgame Studies\]](#) [\[The Skittles Room\]](#) [\[Archives\]](#)

[\[Links\]](#) [\[Online Bookstore\]](#) [\[About The Chess Cafe\]](#) [\[Contact Us\]](#)

Copyright 2002 Russell Enterprises, Inc. All Rights Reserved.

"The Chess Cafe®" is a registered trademark of Russell Enterprises, Inc.