



ENDGAME STUDIES

Combining beauty and practicality, the Endgame Study is one of the unique and subtle wonders of the Royal Game. **The Chess Cafe** is pleased to present, on a weekly basis, a selected endgame study for your enjoyment.

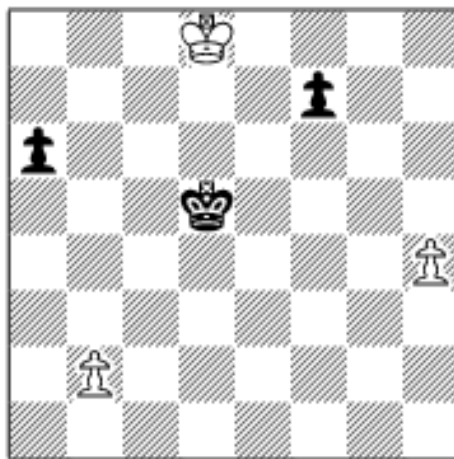


The Complete Studies of Genrikh

Unless specifically designated otherwise, it is always White to move. Unlike problems, studies usually do not require a solution in a pre-determined number of moves. Simply look for the best moves and replies to work out the win or draw. And don't be discouraged if at first you don't succeed - working out the solution will be satisfying - even instructive!

The current study is presented immediately following. Items in our Archives, including this week's selection, are available for you to download.

The solution to this week's Endgame Study may be found farther down the page.



H.A. Adamson
Chess Amateur 1915
Version by T.B. Gorgiev

2nd Hon. Men.
Leningrad Chess Club
1936

Win

Kasparyan

A.J. Roycroft, editor

This 300+ page softcover edition contains all known 545 studies by the one of the greatest endgame study composers of all time.

Biographical information, photographs and additional material by John Roycroft supplement the studies. The result is one of the outstanding collection of endgame studies ever published. Suggested retail price is \$39.95, but it is offered directly from the publisher at the special price of **\$29.95**. For more ordering information, we invite you to visit [The Chess Cafe](#)

[Bookstore](#).



If you are interested in endgame studies, look into the premier international endgame study magazine, EG. To subscribe to EG, (four issues per year, in English), send 22 Euros to:

H. Benak, Kamperfoeliezoo 50, 2353 RS Leiderdorp, The Netherlands. Email: benak@tip.nl. In the U.S., subscriptions may be sent (and are payable) to: Phil Manning 2890 Lee Road, Shaker Hts., Ohio 44120 USA E-mail: p.manning@csu-e.csuohio.edu

Solution to This Week's Endgame Study

1. h5 Ke6 2. h6 Kf6 3. Ke8!/i Kg6 4. h7 Kxh7 5. Kxf7/ii Kh6/iii 6. Kf6/iv Kh5/v 7. Kf5/vi Kh4/vii 8. Kf4 Kh3 9. Kf3 Kh2 10. Kf2 Kh3!/viii 11. b3!/ix Kg4 12. Ke3 Kf5 13. Kd4 Ke6 14. Kc5 Ke5/x 15. b4/xi Ke4 16. Kb6 and wins.

i) 3. h7? Kg7 4. Ke7 f5 and Black wins.

ii) The introduction is now over. This is now Adamson's position. It is an interesting questions whether the prelude has added to or detracted from the whole.

iii) 5...Kh8 6. b4 Kh7 7. Ke6 and wins.

iv) 6. b4? Kg5 7. Ke6 Kf4 8. Kd5 Ke3 draws; 6. Ke6? Kg5 draws, but not 6...Kg6 7. b4 and wins.

v) 6...Kh7 7. b4; 6...a5 7. Ke6 and wins.

vi) 7 Ke5? Kg4, but not 7...Kg5 8 b4.

vii) 7...Kh6 8. b4 Kg7 9. Ke6; 7...a5 8. Ke5 Kg4 9. Kd5 Kf4 10. Kc5 Ke4 11. Kb5 Kd3 12. Kxa5 and 13. b4.

viii) 10...Kh1 11. b4 (This is one of the points underlying the whole study. On h1 the black king is unable to gain a file in the race to the b-file, as there is no square 'below' g1.) 11...Kh2 12. Ke3 Kg3 13. Kd4 Kf4 14. Kc5 Ke4 15. Kb6 Kd4 16. Kxa6 etc.

ix) 11. b4? Kg4 12. Ke3 Kf5 13. Kd4 Ke6 (13...a5? 14. bxa5 Ke6 15. a6 wins; precise timing is essential.) 14. Kc5 a5! (This is what has been lying in wait for the solver!) 15. bxa5 Kd7 16. Kb6 Kc8 draws.

x) 14...a5 15. Kb5 a4 16. Kxa4! wins.

xi) 15. Kb6? Kd4 draws.

*This column is available in **Chess Cafe Reader** format. Click [here](#) for more information.*



[\[The Chess Cafe Home Page\]](#) [\[Book Reviews\]](#) [\[Bulletin Board\]](#) [\[Columnists\]](#)
[\[Endgame Studies\]](#) [\[The Skittles Room\]](#) [\[Archives\]](#)
[\[Links\]](#) [\[Online Bookstore\]](#) [\[About The Chess Cafe\]](#) [\[Contact Us\]](#)

Copyright 2001 CyberCafes, LLC. All Rights Reserved.
"The Chess Cafe®" is a registered trademark of Russell Enterprises, Inc.