



ENDGAME STUDIES

Combining beauty and practicality, the Endgame Study is one of the unique and subtle wonders of the Royal Game. **The Chess Cafe** is pleased to present, on a weekly basis, a selected endgame study for your enjoyment.

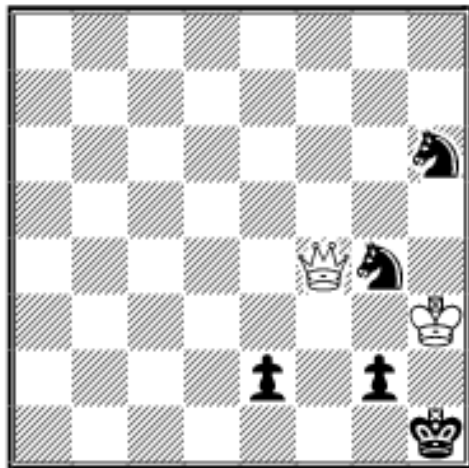


The Complete Studies of Genrikh

Unless specifically designated otherwise, it is always White to move. Unlike problems, studies usually do not require a solution in a pre-determined number of moves. Simply look for the best moves and replies to work out the win or draw. And don't be discouraged if at first you don't succeed - working out the solution will be satisfying - even instructive!

The current study is presented immediately following. Items in our Archives, including this week's selection, are available for you to download.

The solution to this week's Endgame Study may be found farther down the page.



*EG No. B2
Reprinted with
permission*

I. Bondar

*Simkhovich-100MT
Special Prize*

1995

Draw

Kasparyan

A.J. Roycroft, editor

This 300+ page softcover edition contains all known 545 studies by the one of the greatest endgame study composers of all time.

Biographical information, photographs and additional material by John Roycroft supplement the studies. The result is one of the outstanding collection of endgame studies ever published. Suggested retail price is \$39.95, but it is offered directly from the publisher at the special price of **\$29.95**. For more ordering information, we invite you to visit [The Chess Cafe Bookstore](#).



guilders to:

If you are interested in endgame studies, look into the premier international endgame study magazine, EG. To subscribe to EG, (four issues per year, in English), send 35 Dutch

H. Benak, Kamperfoeliezoom 50, 2353 RS Leiderdorp, The Netherlands. Email: benak@tip.nl. In the U.S., subscriptions are \$22 and may be sent (and are payable) to: Phil Manning 2890 Lee Road, Shaker Hts., Ohio 44120 USA E-mail: p.manning@csu-e.csuohio.edu

Solution to This Week's Endgame Study

Not 1.Qf3? e1N 2.Qg3 g1Q 3.Qxe1 Nf2+ 4.Qxf2 Qg4 mate, but **1.Qc1+ g1N+ 2.Kg3 Nh2 3.Qb1 Nf1+ 4.Kf2 Ng4+ 5.Ke1, with: 5...Ng3 6.Qe4+ Nxe4 stalemate, or 5...Kg2 6.Qe4+ Nf3+ 7.Qxf3+ Kxf3 stalemate No.2.**

Arising from these two studies is the poser of how to evaluate the struggle of four knights against the queen. The counter, "Don't they lose?" meets with the riposte "No, they must win!"

It seemed logical to me that united knights must win, by analogy with theory's assertion that four minor pieces (consisting of the bishop pair and two knights) will win.

*This column is available in **Chess Cafe Reader** format. Click [here](#) for more information.*



[\[The Chess Cafe Home Page\]](#) [\[Book Reviews\]](#) [\[Bulletin Board\]](#) [\[Columnists\]](#)
[\[Endgame Studies\]](#) [\[The Skittles Room\]](#) [\[Archives\]](#)
[\[Links\]](#) [\[Online Bookstore\]](#) [\[About The Chess Cafe\]](#) [\[Contact Us\]](#)

Copyright 2001 CyberCafes, LLC. All Rights Reserved.
 "The Chess Cafe®" is a registered trademark of Russell Enterprises, Inc.