



ENDGAME STUDIES

Combining beauty and practicality, the Endgame Study is one of the unique and subtle wonders of the Royal Game. **The Chess Cafe** is pleased to present, on a weekly basis, a selected endgame study for your enjoyment.



The Complete Studies of Genrikh Kasparian

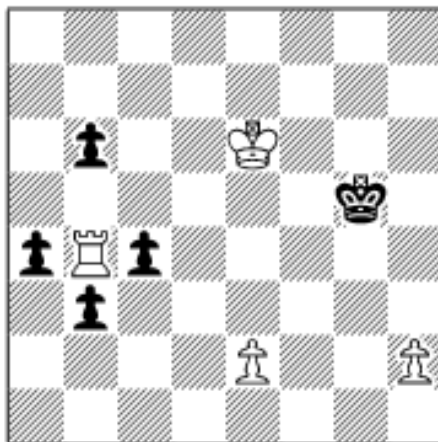
A.J. Roycroft, editor

Unless specifically designated otherwise, it is always White to move. Unlike problems, studies usually do not require a solution in a pre-determined number of moves. Simply look for the best moves and replies to work out the win or draw. And don't be discouraged if at first you don't succeed - working out the solution will be satisfying - even instructive!

The current study is presented immediately following. Items in our Archives, including this week's selection, are available for you to download.

The solution to this week's Endgame Study may be found farther down the page.

Endgame Study #360



P. Farago

Olympic Tourney

1936

Draw

This 300+ page softcover edition contains all known 545 studies by the one of the greatest endgame study composers of all time. Biographical information, photographs and additional material by John Roycroft supplement the studies. The result is one of the outstanding collection of endgame studies ever published. Suggested retail price is \$39.95, but it is offered directly from the publisher at the special price of **\$29.95**. For more ordering information, we invite you to visit [The Chess Cafe Bookstore](#).



If you are interested in endgame studies, look into the premier international endgame study magazine, EG. To subscribe to EG, the premier international endgame study magazine, 22 euros (or the equivalent in USD - payment is also possible via PayPal) may be sent to: Marcel van Herck, Brialmontlei 66, 2018 Antwerpen, Belgium (marcelvanherck@compuserve.com)

Solution to This Week's Endgame Study

1 h4+ Kh5 2 Kf5 c3/i 3 e3!!/ii c2 4 Rc4 b2 5 Rc8 Kh6 6 Kf6 Kh7 7 Rc7+ draw.

i) 2...a3 3 e4!! (3 e3? a2 4 Ra4 b2 and wins) 3...c3 4 Rc4 c2 5 Rc8 c1Q 6 Rxc1 a2 7 Rd1 b5 8 Rc1 b4 9 Rd1 b2 10 Rd8 draw.

ii) 3 e4? c2 4 Rc4 b2 5 Rc8 c1Q and wins.

This column is available in [Chess Cafe Reader](#) format. Click [here](#) for more information.



[[Chess Cafe Home Page](#)] [[Book Review](#)] [[Bulletin Board](#)] [[Columnists](#)]
 [[Endgame Study](#)] [[The Skittles Room](#)] [[Archives](#)]
 [[Links](#)] [[Online Bookstore](#)] [[About The Chess Cafe](#)] [[Contact Us](#)]

Copyright 2003 CyberCafes, LLC. All Rights Reserved.
 "The Chess Cafe®" is a registered trademark of Russell Enterprises, Inc.