



ENDGAME STUDIES

Combining beauty and practicality, the Endgame Study is one of the unique and subtle wonders of the Royal Game. **The Chess Cafe** is pleased to present, on a weekly basis, a selected endgame study for your enjoyment.

[The Complete Studies of Genrikh Kasparyan](#)

A.J. Roycroft, editor

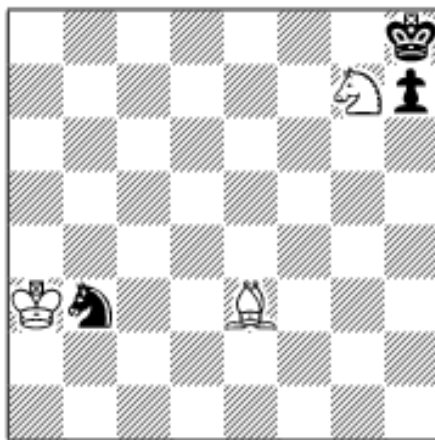
This 300+ page softcover edition contains all known 545 studies by the one of the greatest endgame study composers of all time. Biographical information, photographs and additional material by John Roycroft supplement the studies. The result is one of the outstanding collection of

Unless specifically designated otherwise, it is always White to move. Unlike problems, studies usually do not require a solution in a pre-determined number of moves. Simply look for the best moves and replies to work out the win or draw. And don't be discouraged if at first you don't succeed - working out the solution will be satisfying - even instructive!

The current study is presented immediately following. Items in our [Archives](#), including this week's selection, are available for you to download.

The solution to this week's Endgame Study may be found farther down the page.

Endgame Study #510



F. Chlubna

Stella Polaris

1969

Win

endgame studies ever published. Suggested retail price is \$39.95, but it is offered directly from the publisher at the special price of **\$19.95** for USCF Members!

Order *The Complete Studies of Genrikh Kasparian*
Edited by A.J. Roycroft

If you are interested in endgame studies, look into the premier international endgame study magazine EG. To subscribe, 25 euros or the equivalent in USD may be sent to Marcel van Herck, Brialmontlei 66 B 2018 Antwerpen, Belgium arves@skynet.be Payment is also possible via Paypal to this e-mail address.



Solution to This Week's Endgame Study

1 Nf5 Na5 2 Kb4 Nc6+ 3 Kc5 Nb8/i 4 Bf4 Nd7+ 5 Kc6/ii Nf8 6 Be5+ Kg8 7 Nh6#

i) 3...Na7 4 Kb6 Nc8+ 5 Kc7; 3...Nd8 4 Kd6 Nb7+ (4...Nf7+ 5 Ke7 Kg8 6 Ke8 Ne5 7 Bd4 Ng4 8 Ne7#) 5 Ke7 (5 Kc7 Na5 6 Nd6 Nb3) 5... h5 6 Bb6.

ii) Or 5 Kd6.



[\[ChessCafe Home Page\]](#) [\[Book Review\]](#) [\[Columnists\]](#)
[\[Endgame Study\]](#) [\[The Skittles Room\]](#) [\[Archives\]](#)
[\[Links\]](#) [\[Online Bookstore\]](#) [\[About The Chess Cafe\]](#) [\[Contact Us\]](#)

Copyright 2006 CyberCafes, LLC. All Rights Reserved.
"The Chess Cafe®" is a registered trademark of Russell Enterprises, Inc.