



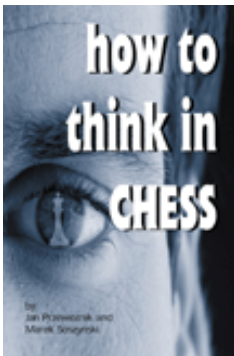
Opening Lanes is based in large part on readers' questions. Do you have a question about a particular opening line? Baffled by a branch of the Benoni or Budapest? Submit your questions (with you full name and country of residence please) and perhaps Gary will reply in his next *Chess Cafe* column...

Yes, I have a question for Gary!

COLUMNISTS

Opening Lanes

Gary Lane



Elephants Can Remember

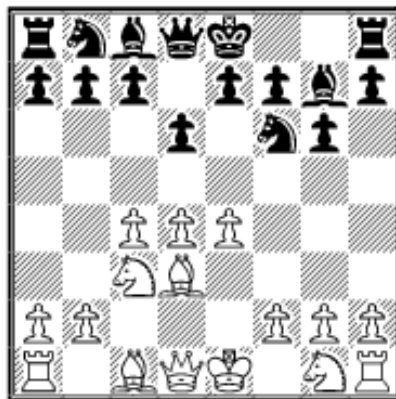
There are some who say that the opening is a memory test and then there is the rest of us who just don't always know what to do. This is hardly surprising with the amount of analysis going on in the well-established openings, so inevitably there will be times when a player's mind will go blank.

"My name is **Fischer Zheng**, from **Canada**, and I play the King's Indian Defence for Black. A couple of weeks ago, I met someone who played Bd3, which I think Yasser Seirawan used to beat the best Chinese player. Black can't employ the classic ...f5 break in this variation and I am kind of confused. If you can help me, I will be very happy."

There is no magical solution, but the following game might provide some inspiration:

Bartosz Socko-Joseph Gallagher Mallorca Olympiad 2004

1 d4 Nf6 2 c4 g6 3 Nc3 Bg7 4 e4 d6 5 Bd3



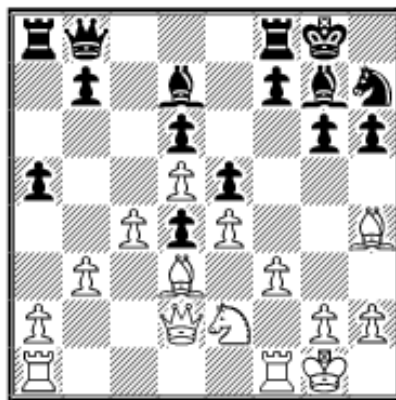
This is the move that is causing such angst. Seirawan has used it with great success to avoid the main lines of the King's Indian. The best way to treat is to make sure that you quickly attack the pawn centre with ...e7-e5 or ...c7-c5. **5...0-0 6 Nge2 Nc6** Black is intending to play ...e7-e5 to challenge the centre. Alternatively: a) 6...c5 has been tested. For instance: 7 d5 e6 8 0-0 exd5 9 exd5 Nbd7 10 Ng3 Ne8 11 Bd2 Ne5 12 Be2 f5 with roughly equal chances, Aleksandrov-Zhou Jianchao, Dubai 2005. b) 6...c6 7 0-0 e5 (Black finds a way to fight White's pawn center.) 8 d5 cxd5 9 cxd5 Nbd7 10 f3 Nc5 11 Be3 Nxd3 12 Qxd3 Ne8 (as usual in the

King's Indian Defence, when in doubt move the king's knight and launch the f-pawn forward to cause mischief.) 13 a4 f5 14 exf5 gxf5 15 f4 led to a double-edged game in Saric-Kozul, Bizovac 2005. **7 0-0 e5** Black forces White to make an early decision on the centre. 7...Nh5 is also possible. **8 d5** It is worth noting that 8 Be3?! is an inaccuracy because of 8...Ng4! with a slight edge. **8...Nd4**



9 Bg5 It is also possible to take the knight with 9 Nxd4 and aim to attack the pawn on d4. For instance: 9...exd4 10 Nb5 (or 10 Ne2 Nd7 11 f3 c5 12 dxc6 bxc6 13 Bf4 Qe7 led to roughly equal chances in Jedlicka-Sejkora, Tatranske Zruby 2003.) 10...Ne8 (a simple continuation which protects the d4-pawn.) 11 b4 (or 11 Bc2 Qf6 12 f4 a6 13 e5 is the double-edged approach when 13...dxe5 14 fxe5 Qb6 15 Nxd4 Bxe5

16 Be3 Qxb2 17 Qd3 Qb4 18 Rae1 Bg7 19 a3 gave White good compensation for the pawn in the form of active pieces, Gofshtein-Ballmann, Zuerich 2000.) 11...a5 Black jumps at the chance to undermine the queenside pawns before he can consolidate. 12 bxa5 c6 13 Na3 Rxa5 14 Qb3 Nc7 the knight emerges aiming to join in the action via a6-c5. 15 Bd2?! (or 15 Nc2 Ra8 16 Bb2!? c5 17 Bc1 bringing the bishop back into play.) 15...Ra8 16 Nc2 Na6 gave Black the edge in Bareev-Tkachiev, Cap d'Agde 2002. **9...h6 10 Bh4 c5** Mr. Zheng made a reference to a game played in China and it might have been Seirawan-Ye Jiangchuan, Beijing 2003. That game saw 10...c6?! 11 b4! Re8?! 12 Rb1 a5 13 dxc6 bxc6 14 b5 Bb7 15 f3 Ne6?! 16 Bc2 intending Ba4 with the advantage. Perhaps 10...Re8 should be investigated: 11 f3 c5 the argument is that if you are going to play ...c7-c5 then it is better to have the king's rook on f8 as in the main game because it reinforces the threat of ...f7-f5. 12 Rb1 (or 12 Nxd4!? exd4 13 Na4 Bd7 14 b4 with equal opportunities.) 12...Bd7 13 b4 b6 14 Qd2 gave White a space advantage in Seirawan-Piket, Antwerp 1995. **11 f3** Or 11 Nxd4 exd4 12 Nb1 this looks odd but the idea is to bring the knight out to d2.) 12...g5 13 Bg3 Ng4 (the knight is aiming to occupy the e5-square.) 14 Nd2 Be5 15 Be2 Bxg3 16 Bxg4 Bf4 17 Bxc8 Rxc8 18 g3 Bxd2 19 Qxd2 Qf6 20 f4 with equal chances, Silman-Golod, Pardubice 1994. **11...Bd7** Also possible: a) 11...g5 12 Be1 Nh5 13 Nxd4 exd4 Black tends to take with the e-pawn in order to free the e5-square for a piece to occupy it 14 Ne2 Nf4 15 g4 Be5 ½-½, Co.Ionescu-Sofronie, Bucharest 2002. b) 11...a6 12 a4 Rb8 13 Nxd4 exd4 14 Ne2 g5 15 Bg3 Nh5 (Black stops e4-e5 being safely played and has kingside attacking ambitions.) 16 Qc2 Be5 17 Be1 Bd7 18 Bd2 b5 19 axb5 axb5 20 b3 Qb6 21 g4 Nf6 22 Rfb1 Ra8 ½-½, Atalik-Socko, Izmir 2004. **12 Nxd4 cxd4 13 Ne2 a5** A precaution against White making progress on the queenside with b2-b4. **14 b3 Qb8 15 Qd2 Nh7!**

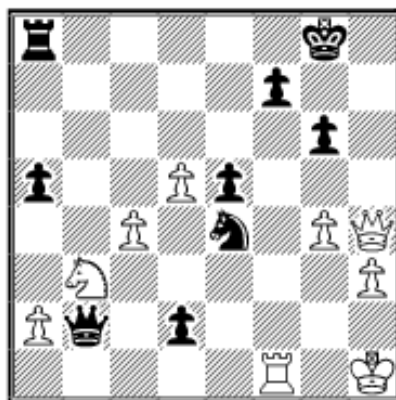


The knight retreats to allow ...f7-f5 in pursuit of an attack. **16 g4?!** Socko wishes to make it awkward for Black to play ...f7-f5 but in the long-term it just weakens his kingside. 16 Rac1 should be considered. **16...b5!**

Gallagher shifts his attention to the other side of the board to open more lines of attack. **17 Rac1** Or 17 cxb5 Bxb5 18 Rac1 Bd7 19 h3 Qb6 with balanced chances. **17...bxc4 18 Rxc4** 18 Bxc4 is met by 18...a4 19 bxa4

Rxa4 20 Bb3 Ra3 intending ...Bb5 is promising. **18...Rc8 19 Rxc8+ Bxc8 20 h3 Nf8** In the King's Indian the closed nature of the position allows such extravagant looking knight manoeuvres. The idea is to play ...Nd7-c5 to close the c-file and put pressure on the light-squared bishop. **21 f4 Nd7 22 Bg3** If 22 f5 then 22...Nc5 is good because 23 f6 is revealed to be harmless upon 23...Bf8 when the kingside is solid. **22...Nc5 23 fxe5 Bxe5** Sometimes Black cherishes his dark-squared bishop, but in this position Gallagher believes that it is a better idea to exchange it. This is because 23...dxe5 would block in the bishop on g7 and allow the bishop on g3 to continue to exert pressure on e5. **24 Bxe5 dxe5 25 Bc4?** I suspect this is what we call time-trouble. 25 Nc1 is met by 25...Ba6 with the initiative. **25...Nxe4 26 Qxh6 Ba6** Black has been presented with connected passed pawns in the centre because White is hoping for some tactics. However, the text works well by offering to exchange the light-squared bishops before d5-d6 can be played. **27 Qh4** Or 27 Bxa6 Rxa6 when White's attack has evaporated and Black is better because of his central passed pawns. **27...Bxc4 28 bxc4 d3 29 Nc1** Or 29 Ng3 Qb6+ 30 Kh2 (30 Kh1 is met by 30...g5! and White can go home.) 30...Qb2+ 31 Kg1 Qd4+ 32 Kh2 Nd2 is very good. **29...Qb6+ 30 Kg2 Qb2+ 31 Kh1 31 Kf3** runs into 31...Nd2+ and White is lost. **31...d2 32 Nb3**

32...d1Q! 0-1



I hope this helps and that Fischer Zheng resends the game he played in this line. Unfortunately, the attachment in his e-mail failed to open so I could not annotate it.

It is always good to know that readers are able to spot possible mistakes by grandmasters and a couple of players have done just that. **Frank Sträter**

from **The Netherlands** wrote, "In your most recent [column](#) you discuss a game between Shekhar Ganguly-Dmitry Poliakov. After the moves 1 e4 c5 2 Nf3 Nc6 3 d4 cxd4 4 Nxd4 Nf6 5 Nc3 d6 6 Bg5 e5?! 7 Bxf6! gxf6 8 Nf5 Bxf5 9 exf5 Nd4 couldn't White have simply played 10 Qxd4? Because after 10...exd4 11 Bb5+ Qd7 12 Bxd7+ Kxd7 13 Ne2 it seems to me that White has a winning position."

This was echoed by **Sam Gower** from **England** who said, “I was reading through your line in the Richter Rauzer Sicilian using Fritz 8 and found something interesting. Fritz 8 came up with the idea of 10 Qxd4!! What do you think? Black has to give up the queen since 10...exd4 11 Bb5+ Ke7 12 Nd5 mate. Is it tenable for Black?”

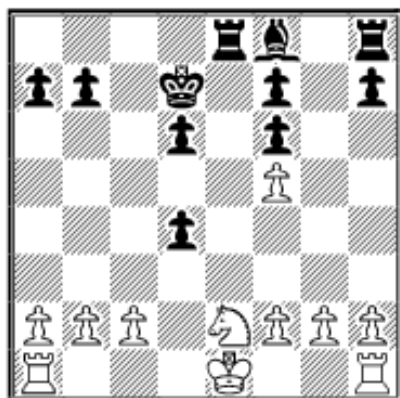
Is it possible for a grandmaster to miss a brilliant sacrifice after only 10 moves?

Surya Ganguly-Dmitry Poliakov Goa 2002

1 e4 c5 2 Nf3 Nc6 3 d4 cxd4 4 Nxd4 Nf6 5 Nc3 d6 6 Bg5 e5 7 Bxf6 gxf6 8 Nf5 Bxf5 9 exf5 Nd4



The move that everyone wants to see is 10 Qxd4! which certainly looks spectacular and play might continue: 10...exd4 11 Bb5+ Qd7 (11...Ke7?? allows the stunning 12 Nd5 mate.) 12 Bxd7+ Kxd7 13 Ne2 when I agree with Mr. Sträter that White is better because he will win a pawn. However, to be charitable to Ganguly 13...Re8:



Intending ...Re5 means that White must respond accurately. Therefore, I can only guess that Ganguly wanted to keep his attacking options open by keeping the queens on the board. For instance 14 Rd1 Re5 15 Rxd4 Rxf5 16 0-0 leaves Black with a poor pawn structure but there is a lot of work to do before White wins. Alternatively, 14 Kf1 is possible to break the pin on the knight: 14...Re5 15 Nxd4 d5 Black wishes to develop

the bishop to c5 in order to exchange the knight which is defending the f5-pawn 16 c3 Bc5 17 Rd1 Bxd4 18 Rxd4 Rxf5 19 f4 intending g2-g4 gives White all the chances. For the record the actual game continued: **10 Bc4 Rc8 11 Bb3 a6 12 Nd5 Rg8 13 0-0 Be7 14 c3 Nxb3 15 axb3 Qd7 16 Qd3 h5 17 Rad1 Bd8 18 c4 Rg5 19 f4 Rg4 20 Qh3 b5 21 Qxh5 Rg8 22 Rc1 bxc4 23 bxc4 a5 24 Qh7 Rf8 25 Qg7 Qxf5 26 fxe5 1-0**

Almerio A. Castro from **Brazil** needs some advice: “I used to play the Falkbeer Counter Gambit and I was studying a book by Estrin, who is an expert in this opening. Then one day, playing on Internet, I was faced with: 1 e4 e5 2 f4 exf4 3 Qf3. I could not find an adequate response to this move. Can you help me?”

I can understand why 3 Qf3 is such a rare move, because for decades it has been known that the King’s Gambit works well with 3 Nf3, 3 Bc4 or even 3 Nc3. However, just about every move has some pedigree in this

swashbuckling opening and in the next game a future world champion works wonders with White:

Max Euwe-Gerard Kroone Amsterdam match2 (5) 1919

1 e4 e5 2 f4 exf4 3 Qf3



The surprise move, but then again the King's Gambit seems to thrive on the unexpected. **3...Qh4+** This certainly looks like a critical line to try and take advantage of White's queen move. **4 g3** Offering another pawn is standard in this opening, if it means that White can create an initiative. **4...fxg3 5 hxg3 Qf6 6 Nc3!**



It would seem that White's opening strategy has been undermined by Black's ability to exchange queens. If the intention is to reduce the attacking options then it is flawed because it is soon revealed that White's better development provides tactical opportunities. **6 Qg2** is not in the spirit of the opening because it misplaces the white queen. For instance, Lemos-De Athayde, Rio de Janeiro 1958, continued: **6...d5 7**

exd5 Bd6 8 Nc3 Qe5+ (8...Bf5 to bring another piece into the action is promising.) **9 Nge2 Bg4 10 d4 Qe7 11 Bd2 Nd7 12 Nb5 Ngf6** (12...Bf5! threatening ...Be4 and ...Bxc2 is a good idea.) **13 0-0-0** with roughly equal chances. **6...d6** Black just wants to bring the light-squared bishop into the action. Other moves have been tested: a) **6...Bc5 7 Nd5 Qxf3 8 Nxf3 Bb6 9 Bc4** (9 Ng5 is aggressive because 9...h6?! runs into 10 Nxb6 axb6 11 Bc4 is good for White.) **9...Nc6 10 d4 d6 11 Be3 f6 12 Nxb6 axb6 13 Bxg8 Rxg8 14 Rxh7** led to equal opportunities, Oskam-Te Kolste, The Hague 1919.; b) **6...Be7 7 Bc4 Nc6 8 Nd5 Qxf3 9 Nxf3 Bd8** (well, you have to admire the lengths Black will go to avoid moving the king, but it is rather passive.) **10 d4 d6 11 c3 Nf6 12 Nxf6+ Bxf6 13 Bg5 Bg4** (or **13...Bxg5 14 Nxg5 Nd8 15 Nxh7** threatening Nf6+ is better for White.) **14 Bxf6 Bxf3 15 0-0!** (this is the move that Black missed.) **15...Bh5 16 g4 gxf6 17 gxh5 Rg8+ 18 Kh2** gave White the edge in Rossetto-Mangini, Mar del Plata 1951.; c) **6...Qxf3 7 Nxf3 c6** (a sensible course of action to stop a knight coming to the influential d5-square.) **8 Bc4 d6 9 d4** (White has compensation in the form of more space and active pieces.) **9...Be7 10 Ng5 Nh6 11 Bf4 f6?! (11...Bg4** to catch up on development seems more sensible.) **12 Ne6 Bxe6 13 Bxe6 Nf7 14 Bc8 Nd8 15 Bf5 h6 16 0-0-0** gave White the initiative in Teske-Vogt, Zittau 1989. **7 Nd5 Qxf3** I am sure there will be plenty of people thinking that White's tactical chances will be severely reduced now that the queens are exchanged. In fact, it is tantamount to resigning since White is given a fantastic position because of the strength of the knight being able to hit

the weak points at c7 and f7. Instead 7...Qd8 is necessary although White has decent compensation upon 8 Bc4 threatening Nb4 to reveal an attack against the f7-pawn. **8 Nxf3**



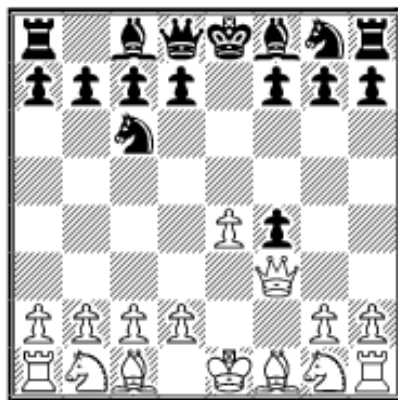
8...Kd8 There is not much joy for Black upon 8...Kd7 since 9 Ng5 pinpoints the vulnerable f7-pawn leaving Black in deep trouble: 9...Nh6 10 Rxf6 gxf6 11 Nxf7 Rg8 12 Bh3+! Kc6 (now Black cannot avoid mate but 12...Ke8 13 Nxc7+ Kxf7 14 Bxc8 is also hopeless.) 13 Nd8+ Kb5 14 a4+ Kc5 15 b4+ Kd4 16 d3 followed by Bb2 mate. **9 Ng5 Be6** At first glance this seems to do the job of defending the f7-pawn. If 9...Nh6 then 10 Rxf6 eliminates the defence of f7 when 10...gxf6 11 Nxf7+ Ke8 12 Nxf8 wins. **10 Nf4!** This clever move has the immediate threat Nfxe6 followed by Nf7 but it also allows another tactic which is soon revealed in the game. **10...Ke7** Or 10...Nh6 11 Nfxe6+ fxe6 12 Nxe6+ Kd7 13 Bh3 is very good for White. **11 Ngxe6 fxe6**



12 Ng6+! This is the trick that Euwe set up on the tenth move and it is deadly. **12...hxg6 13 Rxf8 Nh6 14 d4 d5** Black can catch up in development with 14...Nd7 but 15 Bd3 e5 16 c3 maintains White's dominance. **15 Bg5+ Kf7 16 exd5 exd5 17 Bg2** White is completely winning and manages to rapidly develop the rest of his pieces and the rook on h8 is still playing a very useful role. **17...c6 18 0-0-0 Nd7 19 Rf1+ Nf6** 19...Ke8 leads to further loss of material upon 20 Bxf6 gxf6 21 Bh3 intending to take on d7 to eliminate the defence of f8. **20 Rxf6! 1-0**

Now that we have seen the positive impact of 3 Qf3 it is time to see a more measured response:

Horacio Neto-Vladimir Malaniuk Oviedo rapid 1993
1 e4 e5 2 f4 exf4 3 Qf3 Nc6



I think Mr. Castro should stick with this knight move because it threatens ...Nd4 and has been constantly employed by top players when facing this unusual variation. **4 Qxf4** White takes the opportunity to restore the material balance. The main alternative is 4 c3 to stop a knight landing on the central d4-square. For example: 4...Nf6 5 d4 d5 Black does well to challenge the pawn centre before White can consolidate 6 e5

Ne4 7 Bxf4 Be7 (7...g5 8 Be3 h5 9 Nd2 Bg4 10 Nxe4! Bxf3 11 Nf6+ Ke7 12 Nxf3 Bh6 13 Nng5 gave White excellent compensation for the queen in Capablanca-Chase, New York simul 1922.) 8 Nd2 f5! 9 exf6 Nxf6 10 Bd3 0-0 11 Ne2 Bg4 and now: a) 12 Qe3!? Bd6 13 Bxd6 Qxd6 14 Nf3 Rae8 (the play on the e-file gives Black all the chances.) 15 Qg5 h6 16 Qc1 Bxf3 17 gxf3 Na5 is good for Black; b) 12 Qg3 Bxe2 13 Bxe2? (13 Bxc7 is essential.) 13...Nh5 14 Bxh5 Bh4 wins; c) 12 Qf2!? Nh5 with a clear advantage, Drimer-Unzicker, Hastings 1969/70. **4...Qf6** Well, this is certainly one way to dent White's attacking prospects, but it is rather dull. Instead 4...d5 has been suggested when 5 exd5 Nb4 6 Qe4+ Qe7 7 Qxe7+ Bxe7 8 Kd1 Nxd5 gives Black the better prospects in the ending because of his lead in development. I prefer, in this case, doing some research in older games and Paoli-Prins, Venice 1949, caught my eye because Black tried 4...Bd6:



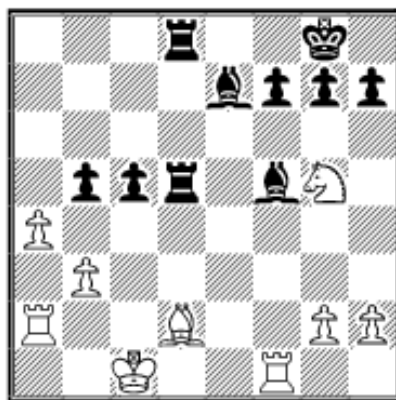
To gain time by attacking the queen, with the plan to quickly castle kingside. That game went 5 Qe3 Nf6 6 Be2 (or 6 d4 is met by 6...Ng4! with advantage to Black.) 6...Qe7 7 Nc3 Bc5 8 Qf4 g5! 9 Qf3 Nd4 10 Qd3 d5 11 Na4 and now instead of 11...b6? Black could have won quickly with 11...Nxe4! 12 Nxc5 Qxc5 13 c3 Nc2+! winning. **5 Qxf6 Nxf6 6 Nc3** After 6 d3 Black has the initiative upon 6...Nd4 7 Kd1 d5.

6...Bc5 7 Nf3 0-0 7...Nb4 seems to be a tricky test in view of 8 Kd1 Ng4 with a strong position, while 8 Bd3 d5 maintains an edge. **8 Be2 Re8 9 d3 d5!?** Malaniuk continues to keep the pressure up by breaking White's centre. **10 exd5 Nb4 11 Kd1** White gives up the right to castle to defend the c2-pawn. This might not be the end of the world in an ending, but it crucially hinders the co-ordination of White's rooks. **11...Nbx d5 12 Nxd5 Nxd5 13 d4 Bb6 14 Bc4** Perhaps 14 c4 should be considered when 14...Nf6 (or 14...Ne3+ 15 Bxe3 Rxe3 16 Kd2 Re8 has the benefit of depriving White of the pair of bishops, which gives Black a plus in an open position.) 15 c5 Ba5 16 Ne5 Be6 when Black can swing the queen's rook to d8 to undermine the d4-pawn. **14...Be6 15 Bb3** The bishop retreats to avoid any tactics based on ...Nc3+ or ...Ne3+ which would reveal a hidden attack on the light-squared bishop. **15...Rad8 16 c3 c5**



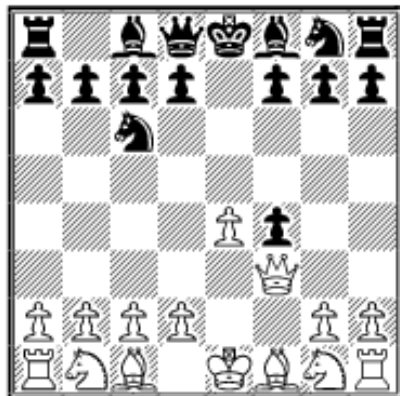
As usual Black adopts an aggressive approach to give White no time to bring the rest of his pieces into action. **17 c4** White can take the pawn, but only if he is rushing to catch a train: **17 dxc5?? Nxc3+ 18 Kc2** (if **18 Ke1** then **18...Bxb3+** heralds a big loss of material for White and he might as well resign.) **18...Bf5+!** **19 Kxc3 Ba5+ 20 Kc4 Bd3** mate. **17...Nb4 18 d5 Bf5** White may well have a passed pawn, but it makes little difference to

the position in view of Black's active pieces, which are now poised to infiltrate. **19 Ba4** It is difficult to find constructive moves because **19 Bd2** runs into **19...Nd3** threatening the b2-pawn and a knight fork on the f2-square. **19...Re4 20 b3** Neto safeguards his c-pawn but it is a hollow victory because now his bishop on a4 is locked out of the central action. **20...a6 21 Rf1 Bc7 22 Bd2 Nxd5!** When Black has such prominent pieces then tactics tend to flow. Sure enough, Malaniuk has prepared a temporary sacrifice to force White to further compromise his position. **23 cxd5 b5** Black traps the bishop and the bonus is that the d5-pawn is now up for grabs. **24 Ng5 Re5 25 d6** White is losing but wants Black to prove his superiority on the board. **25...Bxd6 26 Bxb5 axb5 27 a4** Well, it makes sense to create a passed pawn in an effort to distract Black. However, a player rated 2600 at the time is just too good to fall for such tricks. **27...Rd5 28 Kc1 Be7 29 Ra2**



Or **29 Nf3** when **29...Bf6** gives Black a very powerful position: **30 Ra2 bxa4 31 bxa4 Rb8** wins **29...Rxd2! 0-1**

And finally avid readers, or perhaps those with too much time spare time, have been perplexed by the saga of what to call the opening spin-off from the Caro-Kann that occurs after **1 e4 c6 2 d4 d5** and now **3 Qf3**.



Indeed, **Paul Lowry** from the **USA**, who asked the original question, is still hoping for a claim to fame. He writes, "I think that 'The Pogo' is a great name for the 1 e4 c6 2 d4 d5 3 Qf3 Caro-Kann Defence! I claim 3...dxe4 as the Lowry Variation."

Well, the first battle in having an opening named is getting it into print and you have passed the first hurdle.

The second one is to use it to defeat a good player and have it published around the world. You never know!

However, all this might be worthless chat because on the eve of publishing I have received an urgent e-mail from **Jon Strohbehn** from the **USA** who stunned me by indicating a book had been written on this weird and wonderful opening: "A proper name for 3 Qf3 in the Caro-Kann would be 'The Neo-Goldman Variation.'" Warren H. Goldman published a serialisation in the British magazine *Chess* and a whole book on 1 e4 c6 2 Nc3 d5 3 Qf3 – *New Ideas in Old Settings* (Chess Ltd, Sutton Coldfield, England). I have the 1976 2nd edition."

This is certainly very close to our preferred line and would no doubt solve the naming rights of the variation once and for all. However, Mr. Strohbehn adds, "Unfortunately, he doesn't cover 1 e4 c6 2 d4 d5 3 Qf3."

Copyright 2005 Gary Lane. All Rights Reserved.

Gary wants your questions on openings!! Send it along and perhaps it will be answered in an upcoming column. Please include your name and country of residence. [Yes, I have a question for Gary!](#)



[\[ChessCafe Home Page\]](#) [\[Book Review\]](#) [\[Columnists\]](#)
[\[Endgame Study\]](#) [\[Skittles Room\]](#) [\[Archives\]](#)
[\[Links\]](#) [\[Online Bookstore\]](#) [\[About The Chess Cafe\]](#) [\[Contact Us\]](#)

Copyright 2005 CyberCafes, LLC. All Rights Reserved.

"The Chess Cafe®" is a registered trademark of Russell Enterprises, Inc.