



*Opening Lanes* is based in large part on readers' questions. Do you have a question about a particular opening line? Baffled by a branch of the Benoni or Budapest? Submit your questions (with you full name and country of residence please) and perhaps Gary will reply in his next *Chess Cafe* column...

*Yes, I have a question for Gary!*

## COLUMNISTS

### *Opening Lanes*

Gary Lane



### *Ideas Behind Modern Chess Openings: Black*

by Gary Lane

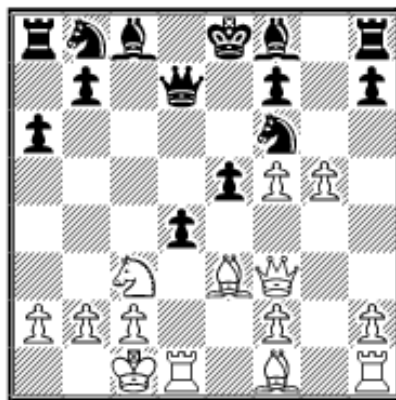
## White Christmas

There are people who dream of a traditional Christmas with snow falling, the song *White Christmas* softly playing at the shopping centre mall, and lots of presents. Then again, there are those of us who would prefer to play white this Christmas. **Jonathan Doran** from the **United States** says, "I have been looking at the opening lines in the Perenyi Attack since watching the Polgar-Kasimjanov match in San Luis. The line I was concerned with was after 1 e4 c5 2 Nf3 d6 3 d4 cd4 4 Nd4 Nf6 5 Nc3 a6 6 Be3 e6 7 g4 e5 8 Nf5 g6 9 g5 gf5 10 ef5 d5 11 gf6 d4 12 Bc4. Now the main moves are 12...Qc7, 12...Qf6 and 12...Bf5, but a friend of mine came up with 12...Qd7. I cannot find anything on this particular move and I was wondering about your thoughts on this position."

It might help by looking at the game that captured your imagination:

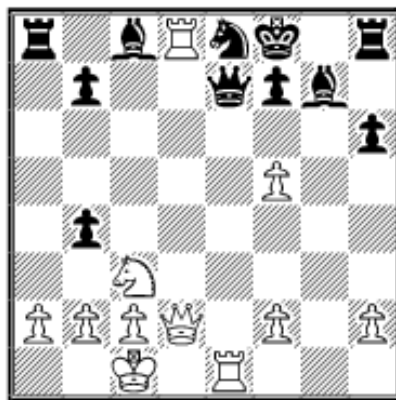
*Judit Polgar-Ruslan Kasimdzhanov* San Luis 2005

**1 e4 c5 2 Nf3 d6 3 d4 cxd4 4 Nxd4 Nf6 5 Nc3 a6 6 Be3** This is the so called English Attack which was named in honour of such players as Chandler, Nunn and Short who pioneered it successfully. **6...e6 7 g4** A very aggressive continuation which aims for a quick kill. Judit is renowned for her attacking skill so this is a natural choice. **7...e5** The e-pawn is advanced a second time in order to reveal an attack against the g4-pawn. **8 Nf5 g6 9 g5** This line is named after the late Hungarian IM Béla Perényi and is rather complicated. **9...gxf5 10 exf5 d5 11 Qf3** White prepares to castle queenside so that the rook can take up residence on the d1-square. After 11 gxf6 d4 12 Bc4 Qc7 Black seemed to be in a commanding position 13 Qd3 dxe3 14 0-0-0 exf2 15 Bxf7+ it is tempting to indulge in a king chase, but White has now given away two of the potential attacking pieces 15...Kxf7 16 Qd5+ Kxf6 17 Qf3 Bh6+ 18 Kb1 Rd8 19 Rxd8 Qxd8 with a winning advantage, R.Fontaine-P.Svidler, Brussels 2000. **11...d4 12 0-0-0 Nbd7** Instead 12...Qd7 is the move suggested by Mr. Doran and it does have the merit of seeking simplifications.

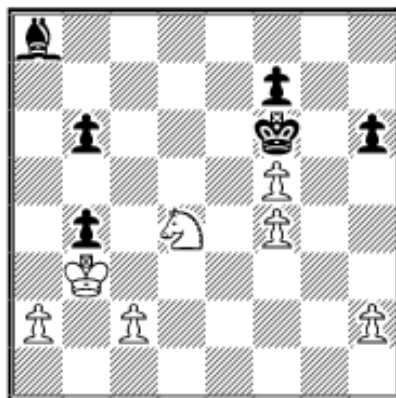


On the other hand Black passes up the opportunity to win a piece. I could not find any master games in this line, but I had a look at the variation. For instance: 13 gxf6 Qxf5 14 Qxf5 Bxf5 15 Nd5 Bd6 16 Nb6 Ra7 (the rook looks silly on this square) 17 Bd2 Nc6 18 Rg1 when the material is equal but crucially Black's pieces lack harmony so I would prefer White. **13 Bxd4** This has been played a few times, but Polgar must have put

some considerable effort into analysing the consequences. The standard move in the past has been 13 Bd2 dxc3 (or 13...Qa5 14 a3 dxc3 15 Bxc3 Qa4 16 gxf6 Qf4+ 17 Qxf4 exf4 18 Bc4 led to double-edged play in V.Ivanchuk-L.Van Wely, Monte Carlo 2005) 14 Bxc3 with massive complications but White has a good record.; 13 Rxd4?! exd4 14 Bxd4 is not so strong after 14...Bg7 15 Bd3 0-0!. Also 13 gxf6 has also been tried 13...dxc3 14 Bc4 Qxf6 15 Rhg1 h6 and eventually Black won in A.Khalifman-B.Gelfand, Shenyang 2000. **13...exd4 14 Rxd4** It seems obvious to pick up the pawn before carrying on with the attack, but in the past another approach was favoured: 14 Bc4 Qc7 15 Rhe1+ Kd8 (or 15...Be7 16 gxf6 Nxf6 17 Nd5! Nxd5 18 Qxd5 Rf8 19 Rxd4 intending f5-f6 is very strong) 16 Rxd4 Bc5 17 Rd3 Re8 18 Red1 Nh5 19 Bxf7 Qf4+ 20 Kb1 Qxf3 21 Rxf3 Ng7 22 f6 with a wild position in S.Farago-A.Habibi, Budapest 1994, but White seems to have enough compensation for the pieces. **14...Bg7!?** A new idea by Black probably aiming to avoid home preparation. 14...Bc5 is better known aiming to gain time by attacking the rook: 15 Rd2 Qc7 (15...0-0? allows White to storm the black king upon 16 gxf6 Qxf6 17 Rg1+ Kh8 18 Ne4 Qe7?! 19 Qg4! (a killer move although 19 f6 Nxf6 20 Nxc5 also proved to be good in S.Firt-J.Sobek, Czechia 1996) 19...f6 20 Bc4 threatening 21 Qg8+ is excellent for White) 16 gxf6 Nxf6 17 Bc4 Be7 18 Bb3 (maybe 18 Bd5 should be considered) 18...0-0 19 Re1 Kh8 20 Qe3 (20 Rd4!? is a possible alternative to swing the rook to the kingside in pursuit of the attack) 20...Bd8 21 Qd4 Bxf5 22 Re5 Bg6 when Black's defences looked solid, K.Pulkkinen-L.Oll, Helsinki 1990. **15 Rg1** A ploy to make Black think twice about castling into an attack on the kingside. After 15 gxf6 Qxf6 it is not obvious how White should proceed. **15...Kf8** Black does have a couple of extra pieces so he is happy to give one back if it will snuff out the attack. The alternative 15...0-0? is revealed to be a mistake upon 16 gxf6 Qxf6 17 Rdg4 which is very good for White. **16 Qe3 Qe7** It's hardly surprising that Black would be happy to exchange queens to shorten the odds of a decent white attack. **17 Qd2 h6** Instead 17...Ng8 allows White to charge with 18 Nd5 when 18...Qc5 19 f6 is the best way to ensure a piece is won while pursuing the attack. **18 gxf6 Nxf6** Maybe 18...Qxf6 is the easiest option: 19 Rxd7 Bxd7 20 Qxd7 Qc6 with roughly equal chances. **19 Rd8+ Ne8 20 Bb5!** By giving away a piece solely to pile on the pressure, Polgar is playing like a true champion. **20...axb5 21 Re1 b4**



Perhaps 21...Be5 might be the best chance when 22 f4 Bf6 falls victim to 23 Rxe8+! which looks grim for Black in view of 23...Qxe8 24 Rxe8+ Kxe8 25 Ne4 Be7 26 f6! Bd8 27 Nd6+ Kf8 28 Qd5 Be6 29 Qxb7 and White is clearly on top. **22 Nb5?** This is such a complicated game that Judit can be forgiven for missing the quickest win. She could wrap things up in style upon 22 Rxe8+! Kxe8 (22...Qxe8? 23 Qd6+ Kg8 24 Rxe8+ is an easy victory) 23 Nd5 Qxe1+ 24 Qxe1+ Kf8 25 Nc7 when the threat to the rook on a8 and mate on e8 is crushing. **22....Bxb2+** Kasimdzhanov assumes that the position is busted and becomes desperate. He could have posed big problems with 22...Be5! when 23 Kb1 is the best bet, but Black is doing well. The obvious 23 f4?? is a blunder because of 23...Rxa2! (the big threat is mate in one) 24 Kb1 Rxb2+ 25 Kc1 Bxf5 when the lady vanishes from the tournament hall. **23 Kxb2 Qf6+ 24 Qd4! Kg7** Or 24...Qxd4+ 25 Nxd4 Kg7 26 Rxe8 Rxe8 27 Rxe8 gives White an excellent ending. **25 Rxe8 Rxe8 26 Rxe8** If Black is not careful then White will play 27 Rg8+ to dislodge the king from protecting the black queen. **26...Qxd4+ 27 Nxd4 Kf6 28 f4** White is relying on the passive nature of the black pieces to seal victory. **28...b6 29 Rd8 Bb7** Black has to do something or it would just be a slow death on the chessboard. **30 Rxa8 Bxa8 31 Kb3**



The plan is to use the active king to take the b-pawns and then advance the passed c-pawn to secure victory. **31...Bd5+ 32 Kxb4 Bxa2 33 Kb5 Bb1 34 c3 34 Kxb6?** would be doubtful because of 34...Bxc2 35 Nxc2 Kxf5 36 Kc5 Kxf4 37 Kd4 Kf3 with a draw in sight because White will run out of pawns. **34...Ke7 35 Kxb6 Kd6 36 c4** The task is straightforward now because the c-pawn just needs to be advanced. **36...Bd3 37 c5+ Kd5 38 Nc6 Ke4 39 Ne7 Bc2 40 c6 Ba4 41 c7 Bd7 42 Kc5 1-0** A clever little move planning 43 Kd6 to guarantee the bishop runs out of decent squares so that the pawn can promote safely.

**Willem van Schaik** from **The Netherlands** writes, "I am a fairly poor (ELO 1650-1700) player, who likes to play the Van Geet Opening (1 Nc3 d5 2 e4 or after 1...e5 2 e4, I try to get the Halloween Gambit on the board). However, after black plays 1...d6 I don't have much more than to play 2 e4 and get into a quagmire, which is the Pirc Defense after 2...Nf6. Yet, just for fun, I played 3 e5?! and actually got quite a good game after 3...dxe5 4 Nf3 e4 5 Ng5 Bf5 6 Bc4 e6 7 f3?! Since then I have played this line a couple of times in blitz games with generally good results. When I looked this line up on an Internet database I noticed that only a handful of games have been played and White scores around 50%.

None other than Paul Keres seems to have “invented” this line in 1932. What is your opinion?”

First of all there are plenty of players who would love to be 1650 so there is no need to despair! The gambit is certainly intriguing and I think it best to look at the key position which can arise from various move-orders:

**Guenter Moser-Claude Schone** Biel 1981

**1 Nf3** Alternatively, 1 e4 d5 2 Nf3 simply transposes to the main game from move 2 and is probably a good way for White to cause a shock in the Scandinavian. **1...d5 2 e4**



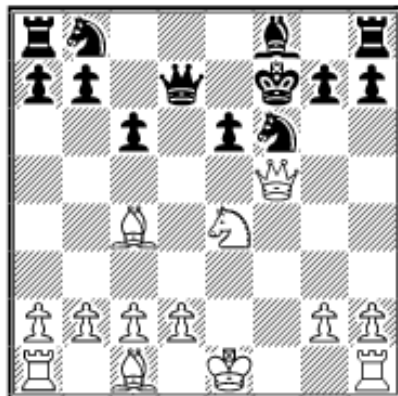
In the spirit of the Christmas season, White sheds a pawn at the first opportunity. This is known as the Tennison Gambit. **2...dxe4 3 Ng5 Bf5** Black defends the e-pawn and at the same time develops another piece which is the best reply. After **3...f5** White can conjure up decent play with **4 Bc4!** when **4...Nh6 5 Nxh7! Rxh7?** (5...Ng4 6 Nxf8 Kxf8 is about equal) **6 Qh5+ Kd7 7 Qg6 Rh8 8 Be6+ wins. 4 Nc3 Nf6 5 Bc4 e6 6 f3**



This is the position that has given Mr. van Schaik lots of positive results. It is a classic gambit which relies on active piece play. **6...exf3 7 Qxf3 c6?** This is an impulsive move to block the attack on the b7-pawn, but it allows White to produce a stunning tactic. Other moves: **7...Nc6 8 Nxf7 Kxf7 9 Qxf5 Nd4 10 Qd3** gave White an edge in Grimm-Kopp, Untergrombach 1990, because the black king is exposed. The best move

in the circumstances is to endure a cramped position with **7...Qc8** when **8 Nxf7** has less effect because of **8...Bg4. 8 Nxf7!** This would lift the spirit of any gambit player because Black is busted within ten moves. **8...Kxf7** The queen and rook are forked so the knight is promptly taken. Instead **8...Qd4** has been tested, yet has failed to impress upon: **9 Nxh8 Qxc4 10 d3** White prepares to develop the rest of his pieces, but must be wary of his knight in the corner being trapped **10...Qh4+ 11 g3 Qg4** (or **11...Qh3 12 Bd2 Nbd7 13 Ne2** intending **Nf4** gives White the brighter prospects) **12 Qxg4 Bxg4 13 h3 Bf3** (**13...Bh5 14 g4 Bf7 15 Nxf7** allows White to solve the problem of his knight being in the corner leaving White with a winning advantage) **14 0-0! Bc5+ 15 Kh2 Bd5 16 Na4!** The knight gains time to attack the dark-squared bishop while preparing **c2-c4** to harass another bishop **16...Bd6 17 c4 b5 18 cxd5 bxa4 19 dxe6 1-0** San Marco-Leduc, Paris 1993. **9 Qxf5 Qd7** Keres-Faltweber, Corr 1932 continued **9...Qe7 10 Ne4** this is a familiar theme which should be obvious to connoisseurs of the gambit line **10...h6 11 Nc5! g6** (if **11...Qxc5** then

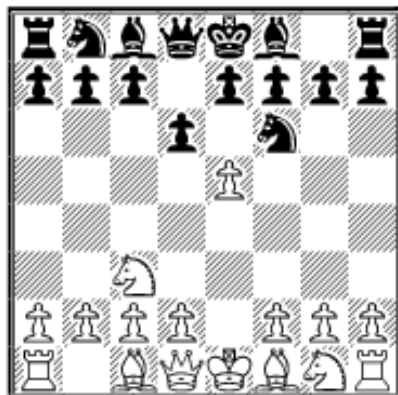
White can force mate upon 12 Qxe6+ Kg6 13 Qf7+ Kg5 14 h4+ Kf5 15 Qe6+ Kg6 16 Bd3+ when Black can give up) 12 Qxe6+ Ke8 13 0-0 b5 14 Qc8+ Qd8 15 Re1+ Be7 16 Rxe7+! Kxe7 17 Qe6+ Kf8 18 Qf7 mate. **10 Ne4**



The knight joins in the attack by threatening Ng5+. **10...h6 11 d3 11 Rf1** is also a strong possibility because 11...Be7 12 Qh5+ Kg8 13 Qg6 looks very good. It is worth noting that 11 0-0? is just a blunder because of 11...Qd4+ 12 Qf2 Qxe4 and it is White who is wondering where it all went wrong. **11...b5 12 Bb3 Na6 13 0-0** Moser has now managed to add the king's rook to the attack which plunges Black into more difficulties. **13...Qd4+ 14 Kh1 Nc7** Black's moves are being dictated because the e6-pawn is the target. **15 c3 Qd8** After 15...Ncd5 16 Qf3 Qe5 White can have fun chasing the black queen 17 d4 Qf5 18 Qe2 Qh7 (if 18...Qg6 then 19 Bc2! threatening a discovered attack leaves Black in ruins) 19 a4 with the much better prospects. **16 Qh5+ g6?!** This hurries Black into having to put the pieces back into the box. The obvious 16...Kg8 allows White to get a grip on the position with 17 Nxf6+ gxf6 18 Qg6+ Bg7 19 a4 with the advantage. **17 Qe5 Be7 18 Nxf6 Bxf6 19 Rxf6+ Qxf6 20 Qxc7+ 1-0**

I decided to take a longer look at this gambit just in case the Reti was the new star gambit line and that the Scandinavian was refuted after 1 e4 d5 2 Nf3! but alas there is a significant improvement for Black:

**1 Nc3** This is known as Van Geet's opening after a player from the Netherlands who has done much to popularise the continuation. Yet, it may have a different moniker depending where you live in the world, perhaps the German Linksspringer is the most appropriate. **1...d6 2 e4 Nf6 3 e5?!**



This is an amusing sacrifice and would probably work out well in Internet blitz games. It is exactly the sort of wild move that strong players usually hate because it is not correct. Well, it does lose a pawn, but chess would be rather boring if there were not a keen set of gambit players out there investigating weird and wonderful positions. I have to say I was slightly concerned when my only reference came from the Argentine Championship. Now before I am deluged with irate e-mails mentioning the well-known talents from this country I should point out that the game J.Pimentel-F.Assensa, Esperanza 2003, came from the under ten championship. **3...dxe5 4 Nf3 e4** I suspect that at club level White could

pick up a few easy victories because surely they will not realise that are about to transpose to a known gambit line. After 4...Nbd7 it allows 5 Qe2 which regains the pawn, but White will not be better. Or 4...Nc6 5 Bb5 Qd6 6 Qe2 at least has the merit of restoring the material level. **5 Ng5 Bf5 6 Bc4 e6 7 f3** This transposes back into the well-known line even if both players have had an extra move. **7...Bc5!**



This is the move that casts doubt on the whole line for White because of a clever tactical trick that soon emerges. **8 fxe4** The logical step is to take the pawn in the centre. I briefly looked at a few alternatives and 8 Rf1 was the best of the bunch in view of 8...0-0 which allows a critical difference compared to the main game upon (perhaps 8...Qd4 is a sterner test when for instance 9 fxe4 Qxc4 10 exf5 Qh4+ 11 g3 Qxg5 12 d4 Qg4 13 dxc5 favours Black) 9 fxe4 Bxe4 and now 10 Rxf6! Qxf6 11 Ncxe4 when the position favours White. After 8 Ngxe4? Nxe4 9 Nxe4? (9 Bb5+ is a desperate attempt to hang on with 9...c6 10 fxe4 but I strongly prefer Black) 9...Bxe4 10 fxe4 Qh4+ which gives White the option of resigning or of being embarrassed on the board. A quick glance makes it seem odd to give up the bishop, but Black is relying on a clever queen trick at the end of the combination. **8...Bxe4!** I think 8...Nxe4 9 Ncxe4 Bxe4 gives White hope because of the clever 10 Nxf7! which produces some great attacking opportunities. For example: 10...Kxf7 11 Rf1+ Ke8 (11...Kg6 12 Qg4+ Qg5 13 Qxe6+ Kh5 14 Be2+ leads to mate; 11...Ke7 12 Qg4 Bf5 13 Rxf5 exf5 14 Qxg7+ winning) 12 Qh5+ g6 (after 12...Bg6 then 13 Qxc5 leaves White doing very well) 13 Qe5! (a little finesse to make life difficult for Black) 13...Qd4 14 Qxe6+ Kd8 15 d3 and White is on top. Instead 8...Bg4 had a good reputation because of a short game, but White has an obvious improvement: 9 Nf3 (9 Be2! offers an equal position which is enough for true gambit players who sometimes just need to survive a tricky opening) 9...0-0 10 e5 Bxf3 11 gxf3 Ng4! when White was already in big trouble, G.Moser-D.Wegener, Strasbourg 1981. **9 Nxe4** If you play something like 9 Qe2 make sure it is a one minute bullet game on the Internet because White has no compensation for the material. **9...Nxe4 10 Nxe4 Qh4+**



This is the point because Black regains his piece and seizes the initiative. **11 Ng3 Qxc4** Black is an extra pawn to the good, while White is under pressure because he also has problems castling kingside.

**Luke Bennett** from **England** asks, "In the Two Knights Defence after the moves 1 e4 e5 2 Nf3 Nc6 3 Bc4 Nf6 4 Ng5 d5 5 exd5 Na5 6 Bb5+ c6 7 dxc6 bxc6 8 Be2 h6 9 Nh3, what is

a good response for black. 9...Bxh3, ...Bc5, ...g5 or ...Rb8. What are likely continuations to these lines?"

Well, White's position might look odd, but it is difficult to refute such play. Indeed, the legendary Bobby Fischer included such a game in his classic book *My 60 Memorable Games* and he played the white pieces. Therefore, I will just suggest a modern approach:

*Andri Gretarsson-Vasily Yemelin* Saint Vincent 2005

**1 e4 e5 2 Nf3 Nc6 3 Bc4 Nf6 4 Ng5 d5 5 exd5 Na5 6 Bb5+ c6 7 dxc6 bxc6 8 Be2 h6 9 Nh3**

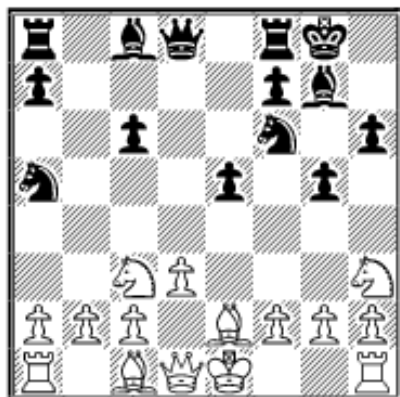


At this point I think it is best to quote Fischer, annotating a game played in 1963:

*To my knowledge, this is the first time that this move had been employed in Grandmaster chess for over seventy years. It is one of Steinitz's many unique opening contributions. The famous cable match game in 1891 between Steinitz and Tchigorin, which ended in a victory for Black, apparently caused the chess world to shy away from this variation.*

Of course, Fischer's approval revived the line and in recent times former world title contender Nigel Short has employed it. Basically, if Black takes the knight on h3 then White has the bishop pair, an extra pawn and can usher his king to king to safety on h1 after castling kingside. **9...g5** An interesting idea to restrict the king's knight which is based on the approach of not bothering to win back the pawn but concentrating on gaining space. The only drawback is that it weakens Black's kingside. Or 9...Bxh3 10 gxh3 Qb6 11 0-0 Bd6 12 d3 (White is slowly unravelling his pieces so Black needs to maintain the initiative) 12...Qc7 13 Bf3 Rd8 14 Nc3 0-0 15 Qe2 gave White an edge in Z.Timar-S.Molnar, Godollo 1996. **10 d3** A natural continuation to allow the queen's bishop to operate freely. Instead 10 c3 has also been tested: 10...Qd5 11 f3 Bxh3 12 gxh3 Bg7 13 Qa4 Nb7 14 d3 Nc5 15 Qc4 Qxc4 (15...0-0-0 is a possible alternative) 16 dxc4 Nh5 17 Nd2 Nf4 18 Ne4 Nxe4 19 fxe4 Nxh3 20 Be3 Nf4 21 Rd1 Ng2+ 22 Kf2 Nxe3 23 Kxe3 led to equal play in A.Gretarsson-S.Dilleigh, Chalkidiki 2002. **10...Bg7** Black prepares to castle kingside in a bid to make sure he stays ahead in development. Black can force the knight back with 10...g4 to create problems for the king's knight but it's unclear: 11 Ng1 Bc5 12 Nc3 Nb7 13 Be3 White blocks the influence of the dark-squared bishop. 13...Bxe3 14 fxe3 Qb6 15 Qd2 (15 Qc1 defends both pawns but the text is designed to gain the momentum) 15...Qxb2 16 Rb1 Qa3 17 h3 gxh3 (17...Nd6 18 hxg4 Bxg4 19 Nf3 the point of the capture on g4 is revealed because the king's knight can now get back in the action 19...e4 20 Ne5 Bxe2 21 Nxe2 Qxa2 22 0-0 Qe6 23 Nxc6 Nh5 24 Ned4 Qd5? 25 Qb4 Rg8 26 Nf5 1-0 M.Kiselev-A.Genin, Leningrad 1975) 18 Nxh3 Rg8 19 Bf3 (19 0-0 is

interesting because 19...Bxh3 20 Rxf6 Rxcg2+? 21 Kh1 intending Rxb6 is actually good for White) 19...Na5 20 Nf2 Rg6 21 Nb5! (White takes advantage of the pin on the h1–a8 diagonal to harass the queen) 21...Qxa2 22 0–0 Kd8 23 Qb4 with excellent attacking chances S.Vysochin-B.Taborov, Kiev 2003. **11 Nc3 0–0**



**12 Be3** It's possible to play like a grandmaster with the extraordinary 12 Ng1, which has a certain amount of logic because it helps to get the piece back into play. This happened in A.Grischuk-V.Malaniuk, Tomsk 2001, which continued: 12...Nb7 13 Nf3 (I quite like 13 Bf3 intending Ne2, but it needs more practical tests) 13...Nd5 14 0–0 Nd6 15 Ne4 f5 16 Nxd6 Qxd6 17 Nd2 g4 18 Re1 Ba6 19 Bf1 Qg6 20 g3 led to roughly equal chances because for the pawn Black has active play. **12...Nd5** The knight makes way for the f-pawn to advance which is part of the overall strategy of gaining more space. **13 Nxd5 cxd5 14 0–0 d4 15 Bd2 Rb8** The queen's rook takes advantage of the semi-open file to add some pressure against the b2-pawn. **16 Rb1** After 16 b3 then 16...Nc6 maintains the tension. **16...Nc6 17 Kh1** The king is nudged into the corner in anticipation of the knight being taken or to manoeuvre it back into the action via g1. **17...Be6 18 a3 f5** At this stage the trick to win a pawn with 18...Ba2 backfires upon 19 Ra1 Rxb2 20 Bc1 when the rook cannot safely defend the bishop. **19 Ng1 Qc7 20 Nh3?!** This a sign that something has gone wrong because Black is gradually improving his position while White is reduced to repeating moves. **20...e4 21 dxe4 fxe4 22 f3** Or 22 Bg4 Ba2 23 Ra1 Bd5 gives Black more than enough compensation for the pawn. **22...e3 23 Be1 Kh8 24 Bd3 Ba2 25 Ra1 Rxb2** This is now possible because Bd2–c1 is no longer possible. **26 Qc1 Rfb8 27 a4?** It would be better to cut off the support of the rook on b8 with 27 Bb4! when 27...R2xb4 28 axb4 Nxb4 29 Qd1 Be6 gives Black an edge. **27...Ne5 28 Bg3** If 28 f4 then 28...Nxd3 29 cxd3 Qb7 and the threat of mate on g2 dictates matters: 30 Rf3 Rc8 31 Qd1 e2 winning easily. **28...Bc4 29 Rd1 Bxd3 30 cxd3 Rc2 31 Qa3**



**31...Bf8** The queen is trapped on the edge of the board. **32 Bxe5+ Qxe5 0–1**

Finally, **John Anderson** from **England** wrote: "there are a number of new books on the Scotch, including your own, yet all seem to omit the correct move-order! Why isn't 1 e4 e5 2 d4! more precise? After 2...exd4 3 Nf3 Nc6 we have avoided the Latvian, the best lines of

the Philidor and Petroff and even the Elephant Gambit! I am baffled as to why this move-order is ignored."

I just assumed this was a daft idea because the world's greatest players have been battling the Petroff for some time. However, I found many examples where grandmasters accepted the transposition to the Scotch. Therefore after investigating the move-order I found a way for Black to be awkward:

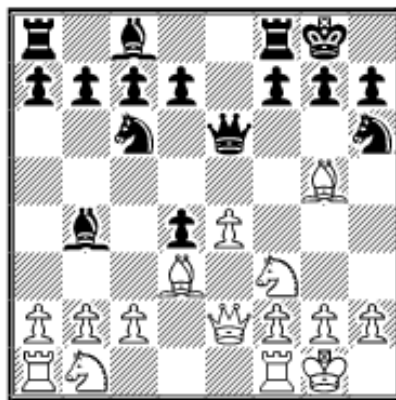
**Andras Horvath-Zlatko Ilincic** Budapest 2004

**1 e4 e5 2 d4 exd4 3 Nf3** This is the idea you play the Danish and avoid all those annoying lines that can happen before you get the Scotch on the board. **3...Bb4+!?**



I think this is the best way to avoid transposing to the Scotch with 3...Nc6. Also possible: a) 3...c5 4 c3 (4 Bc4!? is worth contemplating) 4...Nf6 5 e5 Ne4 6 Qe2 f5 7 exf6 d5 8 Nbd2 Bf5 9 Nxe4 (9 Nh4! swings the game in White's favour) 9...dxe4 10 f7+ Kxf7 11 Ne5+ Ke8 12 g4 Bd6 13 gxf5 Bxe5 14 Bg2 Nc6 15 Bxe4 led to roughly equal chances in E.Sveshnikov-A.Mikhalchishin, Riga 1985. b) 3...d5 4 Qxd4 dxe4 5 Qxd8+

Kxd8 6 Ng5 Nh6 7 Nxe4 gives White a slight plus only because the black king can no longer castle. **4 Bd2** It might be best to play 4 c3 in order to generate complications: 4...dxc3 5 Nxc3 Bxc3+ (5...Ne7 6 Qd4! Bxc3+ 7 Qxc3 0-0 8 b4! intending Bb2 gives White decent chances; 5...Nc6 6 Bc4 Nf6 is a transposition to the Goring Gambit) 6 bxc3 Ne7 7 e5!? (7 Ba3 is also a possibility) 7...d5 8 exd6 Qxd6 9 Qxd6 cxd6 10 Ba3 d5?! Black is trying to win the ending, but the position doesn't really offer such luxury (10...0-0!? 11 Bxd6 Re8 is the solid approach with equal chances) 11 0-0-0 Nbc6?! (instead 11...Be6 is a solid approach) 12 Bb5 Be6 13 Rhe1 a6 14 Bxc6+ Nxc6? 15 Rxd5 (White has done a good job of keeping the black king in the centre of the board) 15...Rd8 16 c4! led to a slight edge, J.Zezulkin-A.Karpov, Bastia 2002. **4...Qe7** The best way to maintain the tension because if Black instantly takes on d2 then White's development merely improves. **5 Bd3 Nc6 6 0-0 Nh6** If you step back in time over 100 years this line was the latest fashion: 6...Bxd2 7 Nbx2 d6 8 Bb5 Bd7 9 Bxc6 Bxc6 10 Nxd4 Nh6?! 11 Qh5 0-0 12 Rae1 Rae8 13 f4 Qf6 (13...Bd7 is a safe response offering equal chances) 14 Nxc6 bxc6 15 c3 Rb8?! (15...d5 to stop White building up a pawn centre and deprive the knight of the e4-square is the correct thing to do) 16 f5 Rxb2? 17 e5! dxe5 18 Ne4 1-0 A.Anderssen-H.Pollmacher, Leipzig 1855. **7 Bg5 Qe6 8 Qe2 0-0**



The chances are about equal but White has to try and make the most of Black's awkwardly placed pieces to justify the pawn deficit. **9 Bc4!?** 9 Nbd2 is perfectly acceptable. **9...Qg6 10 a3** The desire to grab the pawn back is not such a good idea: 10 Bd5 d6 11 Bxc6 bxc6 12 Bxh6 Qxh6 13 Nxd4 d5 when Black's pair of bishops gives him the initiative. **10...Bc5 11 b4 Bb6 12 b5 Ne5! 13 Bxh6** If 13 Nxe5 then 13...Qxg5 14

Nf3 Qf4 15 Rd1 Ng4 16 h3? Nxf2! 17 Qxf2 d3 and White can give up. **13...Nxf3+ 14 Qxf3 Qxh6 15 Rd1 d6** Just a reminder that Black is still a pawn up so White's opening is not convincing. **16 Bd5 a6 17 bxa6 Rxa6 18 Nd2 c6 19 Bb3 Ba5** Black finds a way to activate his bishop and put extra pressure on the a3-pawn. **20 Nf1 Bc3 21 Ra2 Be6 22 Ng3 Bxb3 23 cxb3 Qe6 24 Nf5 c5** As usual Black hangs on to the extra pawn leaving White without a plan. **25 h3 g6 25...Qxb3** is also possible, but Black is content to oust the influential knight before grabbing another pawn. **26 Ng3 Qxb3 27 Raa1 Rxa3** White is completely lost, but tries to keep going just in case. **28 Rxa3 Qxa3 29 Qf6 d3 30 Qxd6 Bd4 31 e5 Qb3 32 Rd2 Qb1+ 33 Kh2 Qe1 0-1**

---

Copyright 2005 Gary Lane. All Rights Reserved.

***Gary wants your questions on openings!! Send it along and perhaps it will be answered in an upcoming column. Please include your name and country of residence. [Yes, I have a question for Gary!](#)***

---

 [TOP OF PAGE](#)

 [HOME](#)

 [COLUMNS](#)

 [LINKS](#)

 [ARCHIVES](#)

 [ABOUT THE CHESS CAFE](#)

[\[ChessCafe Home Page\]](#) [\[Book Review\]](#) [\[Columnists\]](#)

[\[Endgame Study\]](#) [\[Skittles Room\]](#) [\[Archives\]](#)

[\[Links\]](#) [\[Online Bookstore\]](#) [\[About The Chess Cafe\]](#) [\[Contact Us\]](#)

Copyright 2005 CyberCafes, LLC. All Rights Reserved.

"The Chess Cafe®" is a registered trademark of Russell Enterprises, Inc.