



COLUMNISTS

Chess Mazes

Bruce Alberston



**CHESSTHEATRE**  
 Play through and download the games from [ChessCafe.com](#) in the [DGT Game Viewer](#).

[The Complete DGT Product Line](#)



Chess Mazes

In the fall of 2004, popular chess author Bruce Alberston released a book called [Chess Mazes](#), designed to help students to develop their visualization and planning skills. *Chess Mazes* was an instant success and [ChessCafe.com](#) was delighted when Bruce agreed to offer a new *Chess Maze* puzzle each week.

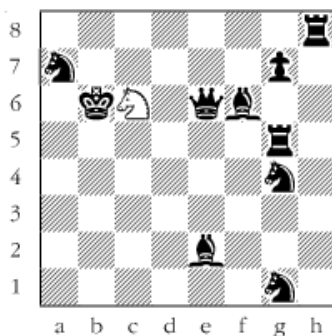
The concept is simple enough: the object is to place the black king in check in the shortest number of moves. The one restriction is that the white piece may not put itself *en prise*, i.e., on a square where it can be captured.

For those who may be interested in a more detailed introduction and overview to these puzzles, we invite you to take a look at the introduction from Bruce's book. Click [here](#) to read more, otherwise, we hope you enjoy this week's *Chess Maze* puzzle...

A Knight Maze

Of course the black queen will have to be taken. Recall the route used as you'll need it again to give check.

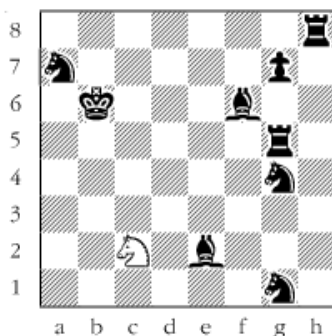
#195



Scroll down for the solution

1 Nb4 2 Nc2 3 Ne1 4 Ng2 5 Nf4 6 Nxe6 7 Nf4 8 Ng2 9 Ne1 10 Nc2

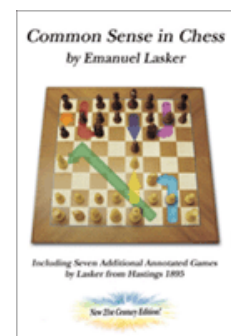
#195a



Visit [Shop.ChessCafe.com](#) for the largest selection of chess books, sets, and clocks in North America:



[Chess Mazes](#)  
 by Bruce Alberston



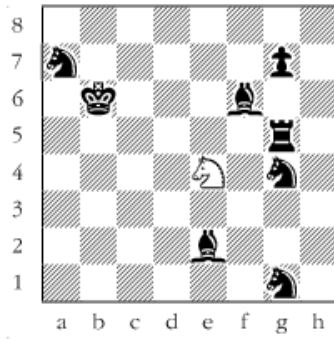
[Common Sense in Chess](#)  
 by Emanuel Lasker



[Passport Travel Chess Set](#)

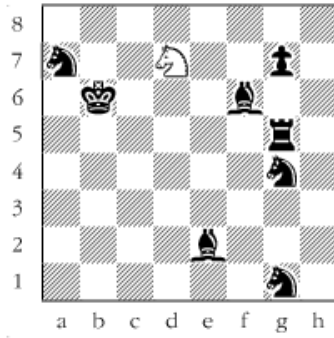
11 Na3 12 Nb1 13 Nd2 14 Ne4 15 Nd6 16 Nf7 17 Nxh8 18 Nf7 19 Nd6  
20 Ne4

#195b



21 Nd2 22 Nb1 23 Na3 24 Nc2 25 Ne1 26 Ng2 27 Nf4 28 Ne6 29 Nf8 30  
Nd7+

#195c



---

© 2009 Bruce Alberston. All Rights Reserved.

---

 [TOP OF PAGE](#)

 [HOME](#)

 [COLUMNS](#)

 [LINKS](#)

 [ARCHIVES](#)

 [ABOUT THE  
CHESS CAFE](#)

[\[ChessCafe Home Page\]](#) [\[Book Review\]](#) [\[Columnists\]](#)  
[\[Endgame Study\]](#) [\[The Skittles Room\]](#) [\[Archives\]](#)  
[\[Links\]](#) [\[Online Bookstore\]](#) [\[About ChessCafe.com\]](#) [\[Contact Us\]](#)

© 2009 CyberCafes, LLC. All Rights Reserved.  
"ChessCafe.com®" is a registered trademark of Russell Enterprises, Inc.