



Queen and Rook's Pawn vs Queen

Part 2

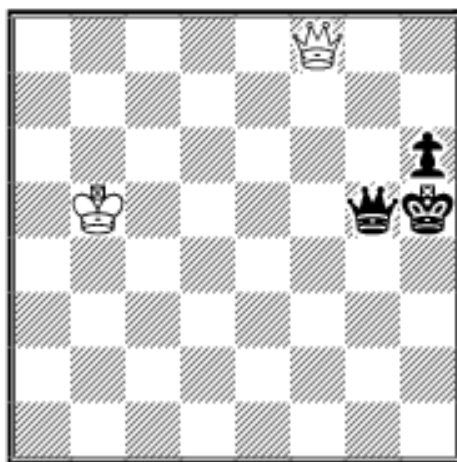
I continue the discussion of the important motifs:

If the defending king can get in front of or very near the pawn, it should do so:

29.01 A.Bakutin - D.Novitzkij (2328) Tula 2000

Endgame Corner

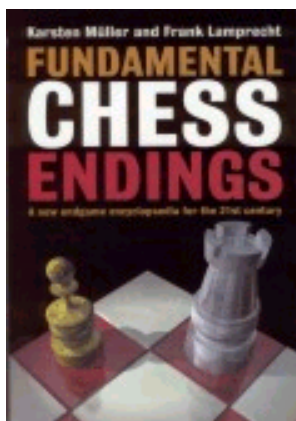
Karsten Müller



62.Kc4!? **Kg4?! (62...Qd2!?)**
63.Kd3 h5 64.Ke2 Now the draw is totally clear
64...Qe5+
65.Kf1 Qb5+ **66.Kg2 Qd5+**
67.Kh2 Qe5+ **68.Kg2 Qg3+**
69.Kh1 Qe1+ **70.Kg2 Qe2+**
71.Kg1 Kh3 72.Qf1+ Qxf1+!
 (Nunn Convention is used for the !, ? etc.) 1/2-1/2

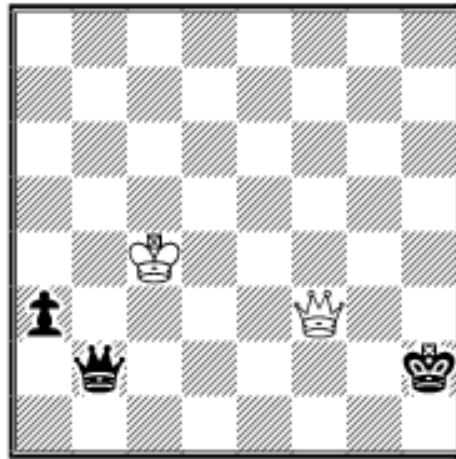
In certain favourable position the defender can exchange the queens himself:

29.02 L.Helm (2148) - N.Zdebskaja (2182) EU-chT U18 Girls Balatonlelle 2001



Order
[Fundament Chess](#)
[Endings](#)

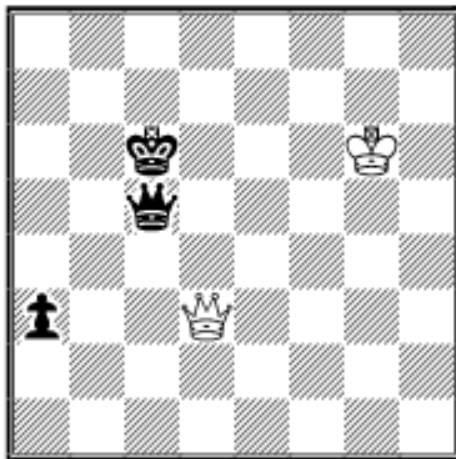
by Karsten Müller &
 Frank Lamprecht
 The BCF Book of the
 Year!



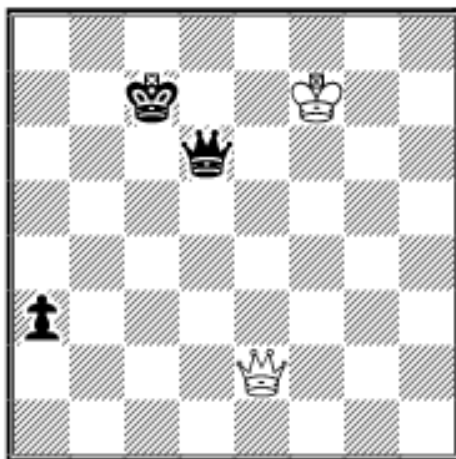
60.Qc3!? Kg2 (60...Qe2+ 61.Kb3 a2 62.Qb2=) **61.Kd3 Qb5+** (61...Qb7!? 62.Kc2 a2 63.Qa1 Qd5 64.Kb2=) **62.Kc2 Qb2+ 1/2-1/2**

The queen should be placed as centrally as possible:

29.03 S.Stoisavljevic (2088) - S.Petronic (2203) JUG-ch (Women) 53th Herceg Novi 2000

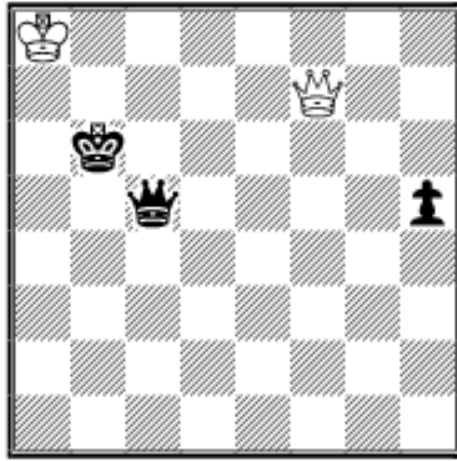


90.Qa6+? (90.Qb3 was better: 90...Qa5 now Black's queen is not well placed to deal with the checks (90...Kc7 91.Kh7 and White's king is inside the drawing zone) 91.Qc4+ Kb7 92.Qe4+ Ka6 93.Qd3+=) **90...Kc7! 91.Qe2 Qd6+ 92.Kf7**

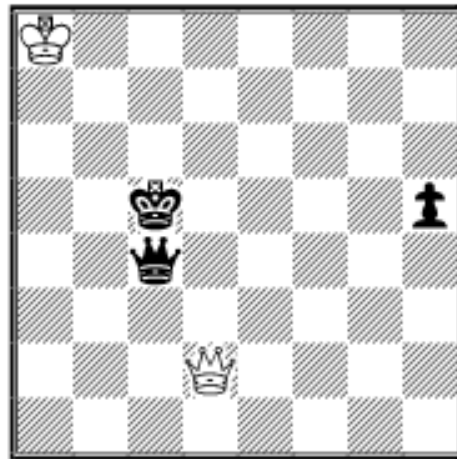


92...Qd5+!? Black's queen is now beautifully centralized **93.Kg7?! a2 94.Qc2+?! Kb8 95.Qh2+ Ka8 96.Qb2 Qb7+ 0-1**

29.04 J.Gabriel (2180) - C.Frick (2169) Oberliga Württemberg 2001



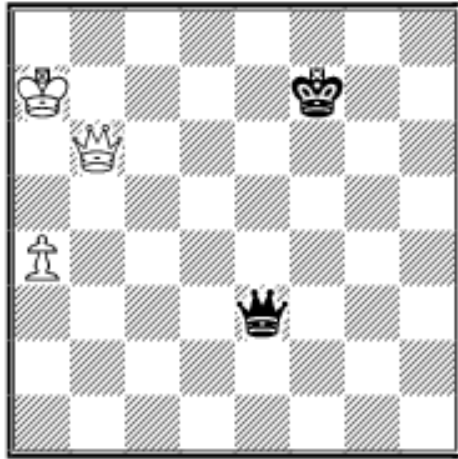
White has to be careful as his king is in danger: **93.Qc7+!?** A nice stalemate trick **93...Kb5**
94.Qb7+ Ka5 **95.Qc7+ Kb4**
96.Qf4+ Qc4 **97.Qd2+ Kc5**



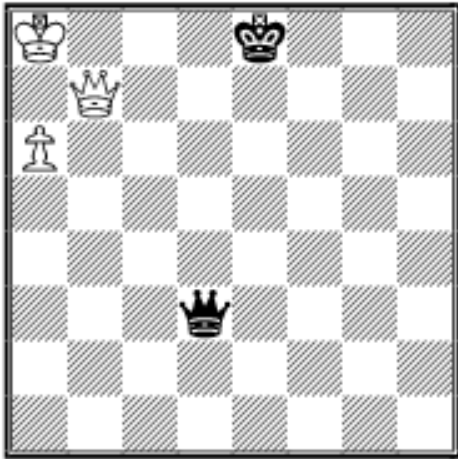
98.Qa5+? Misplaces the queen.
 98.Qe3+ was called for:
 98...Qd4 99.Qc1+ Kb6
 100.Qh6+ Kc7 101.Qc1+! Kd7
 102.Qg5= (102.Qh6? Qd5+
 103.Ka7 Qa5+ 104.Kb7 Qc7+
 105.Ka8 Qc6+--+) **98...Kc6! 0-1** and White resigned due to
99.Qxh5 (99.Qa7 Qg8+--+;
 99.Qa3 Qg8+ 100.Ka7 Qf7+
 101.Ka6 Qb7+ 102.Ka5 Qb5#) **99...Qa6+ 100.Kb8 Qb7#**

I now want to show the winning procedure, if the defending king is firmly cut off in the losing zone and **fighting methods against a cut-off:**

29.05 I.Gil Rodriguez - R.Solyomvari EU-ch U14 Girls Peniscola 2002



78...Qa3? (78...Qf4 still draws as Black's king is close enough: 79.a5 Ke7! 80.a6 Qc4! 81.Kb7 Kd7!=) **79.a5! Ke8 80.a6?** (80.Kb7+-) **80...Qe7+?** 80...Kd7! and White can't win. **81.Ka8 Qe4+ 82.Qb7? Qd3?** (82...Qc4!=)

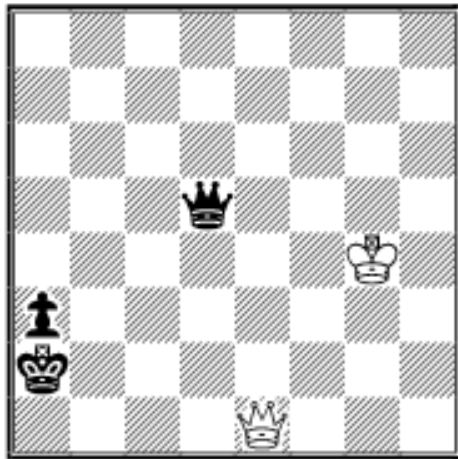


83.a7? Too early; White's queen is not centralized enough. 83.Qc8+ is the right way to proceed: 83...Ke7 84.Kb8 Kf6 85.Qc6+ Kg5 86.a7 Qd8+ 87.Kb7! Qe7+ 88.Kb6 Qd8+ 89.Ka6+- **83...Kf8?** 83...Kd8!?! draws: 84.Qb6+ Kd7! 85.Kb8 Qg3+! 86.Kb7 Qf3+ 87.Ka6! Qa3+!

88.Qa5 Qd6+!= **84.Qc8+ Kf7 85.Kb8** It's over as Black has no check **85...Qb3+ 86.Qb7+ 1-0**

As fighting against a cut-off is important I give two further examples:

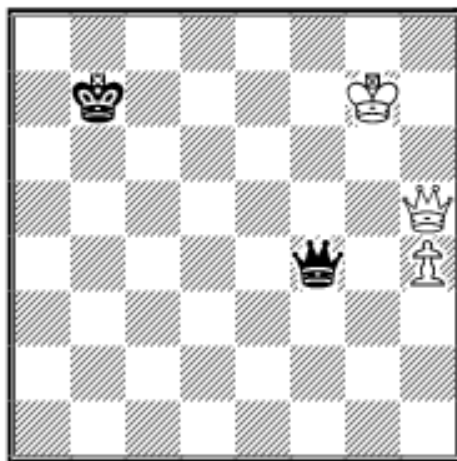
29.06 O.Ivanov (2350) - V.Kuporosov (2473) Petrov memorial open St Petersburg 2002



99.Qc1? 99.Qb4 is better as Black's king can't free himself with out the help of the queen. So the cut-off must be released to make progress: 99...Qb3
 100.Qd2+ Kb1 101.Kh5 a2
 102.Qe1+! Kb2 103.Qd2+ Qc2
 104.Qb4+! Kc1 105.Qf4+!=
99...Qe4+? (99...Kb3 100.Qe3+
 Kb2 101.Qe2+ Kc3 102.Qe1+

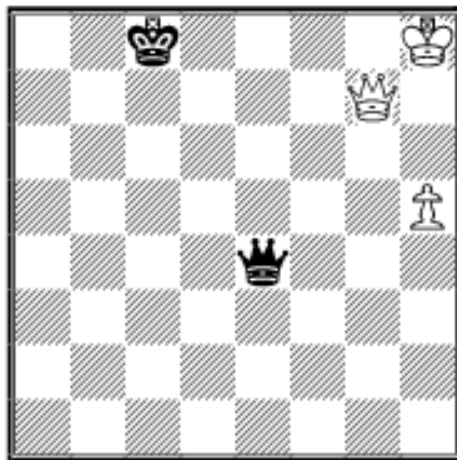
Qd2 103.Qg3+ Qd3! 104.Qe1+ Kb3 105.Kh5 a2 106.Qe6+
 Qc4 107.Qe5 Kc2 108.Qh2+ Kc3 109.Qg3+ Kb4
 110.Qe1+ Ka4 111.Qd1+ Kb5 112.Qd7+ Qc6 113.Qd3+
 Kb6 114.Qd8+ Ka6 115.Qd4 Qh1+--+) **100.Kg5 Kb3**
101.Qd1+! Kb2 102.Qd2+! Kb3 the position is drawn and
 I don't know, if the result **0–1** in the ChessBase
 MEGABASE is correct or not.

**29.07 Wang Yu (2382) - E.Levushkina (2208) Asian-ch
 (Women) 9th Chennai 2001**



Black has to defend very carefully as his king is cut-off in the losing zone: **92...Qd4+!**
93.Kh7 Qe4+ 94.Kh6 Black's king can't go to the 6th rank now, so care is required. But White has no real threats, so e.g. 94...Qd4 draws. **94...Qe3+?**
95.Qg5! Qe6+ 96.Qg6 Qe3+ 97.Kh7 Kc8 98.h5 Qe7+

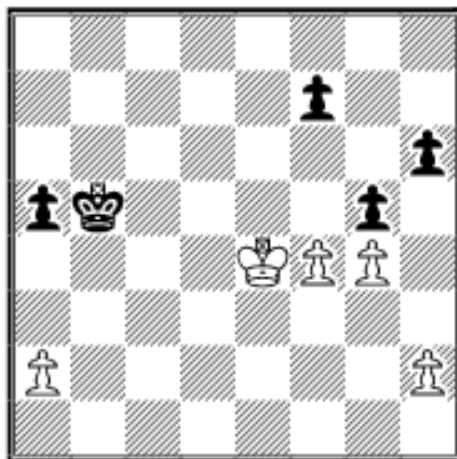
99.Qg7 Qe4+ 100.Kh8



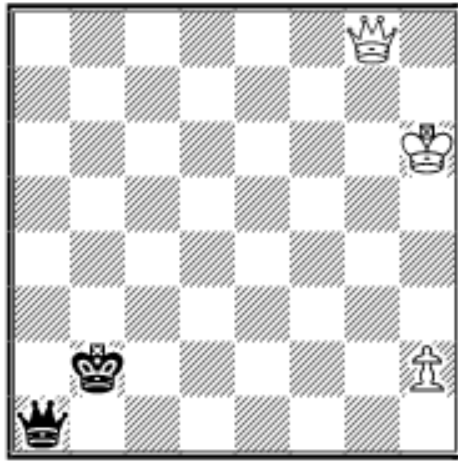
100...Qf5?! This makes it very easy. 100...Qf4!? was much tougher: 101.Kg8! Qc4+ 102.Qf7 Qg4+ 103.Kh7 Qe4+ 104.Kg7 Qd4+ 105.Qf6 Qg4+ 106.Qg6 Qd4+ 107.Kf7 Kb8 and the mate is still 60 moves away. **101.Qg8+ Kd7 102.Qh7+! Ke6 103.Qxf5+ Kxf5 104.Kg7! 1-0**

The ending Q+P vs Q mostly arises from pawn endings, so I end my discussion with a few examples (for further discussion of Q+P vs Q see e.g., *Fundamental Chess Endings*, p.316-322):

29.08 A.Moiseenko (2575) - V.Bologan (2652) RUS-chT 9th Ekaterinburg 2002

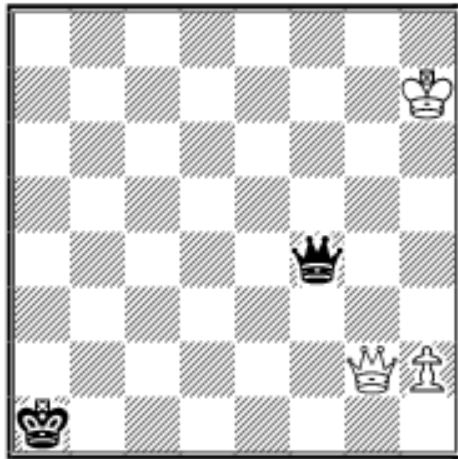


47...f6! 48.fxg5 fxg5!
 (48...hxg5? 49.Kf5! Kb4 50.Kxf6! Ka3 51.Kxg5! Kxa2 52.h4 a4 53.h5!+-) **49.Kf5 Ka4 50.Kg6! Ka3! 51.Kxh6! Kxa2 52.Kxg5! a4 53.Kh6 a3 54.g5! Kb2 55.g6 a2 56.g7 a1Q 57.g8Q**



The endgame is easily drawn as Black's king is ideally placed:

**57...Qc1+ 58.Qg5 Qc6+
59.Qg6 Qc1+ 60.Kh7 Qf4
61.Qg2+ Ka1**



62.h3?! Making it very easy as

White's queen is not centralized enough **62...Qf5+** Eyeing the

pawn h3 **63.Kh6 Qe6+ 64.Kh5**

Qf5+ 65.Kh4 Qh7+ 66.Kg3

Qc7+ White's king finds no

shelter anymore **67.Kf2 Qc5+**

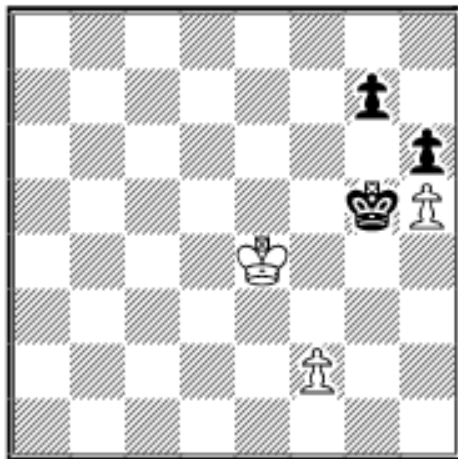
68.Kg3 Qc7+ 69.Kg4 Qg7+

70.Kf3! Qb7+ 71.Kf2 Qb6+

72.Kf1 Qb1+ 73.Ke2 Qc2+

74.Kf3 Qc6+ 75.Kg3 1/2-1/2

**29.09 A.Calotescu (2299) - H.Hunt (2415) EU-ch 3rd
(Women) Varna 2002**



White has to defend very

carefully: **78.f4+! Kxh5**

79.Kf5! g5 (79...g6+ 80.Kf6 g5

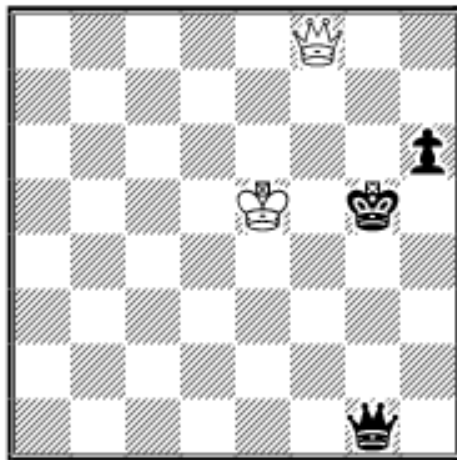
81.f5!)=) **80.Ke4! g4** (80...Kg6

81.fxg5 hxg5 82.Kf3! Kh5

83.Kg3!)=) **81.f5! Kg5 82.Ke5!**

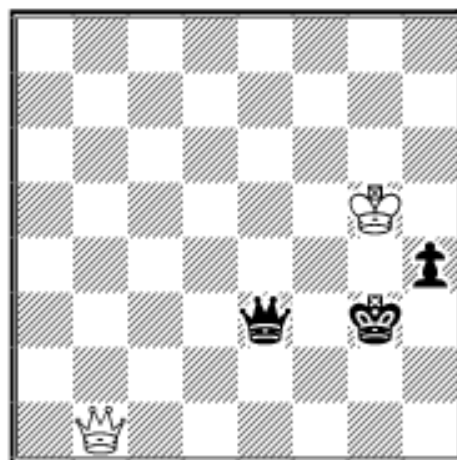
g3 83.f6! g2 84.f7! g1Q

85.f8Q!



White's king will find enough time to reach the saving corner or to stay closely behind the pawn: **85...Qe3+ 86.Kd5! h5 87.Qd8+ Kg4 88.Qc8+ Kg3 89.Qb8+ Qf4 90.Qb1 Qf3+ 91.Ke5 Qe3+ 92.Kf5 h4 93.Qb8+ Kh3 94.Qb1 Qf3+ 95.Kg5 Qg4+ 96.Kh6 Qe6+ 97.Kg5 Qe5+ 98.Kh6 Qe3+**

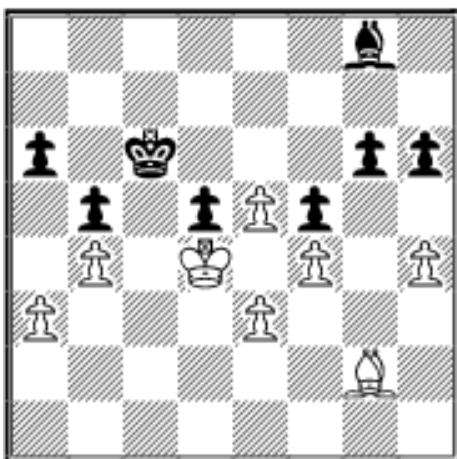
99.Kh5 Qe2+ 100.Kg5 Qg2+ 101.Kh5 Qg4+ 102.Kh6 Kg2 103.Qc2+ Kg3 104.Qb1 Qe6+ 105.Kg5 Qe3+



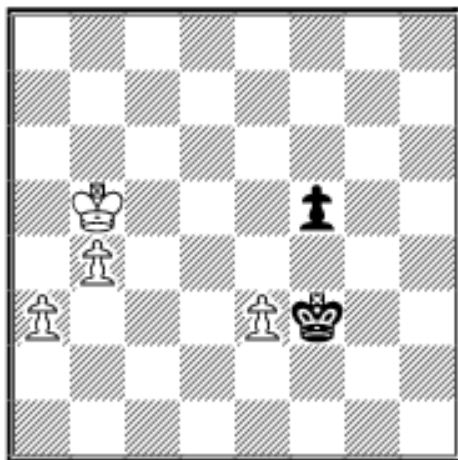
106.Kh5! h3 107.Qb8+ Qf4 108.Qg8+! Kf2 109.Qa2+! Kg1 110.Qb1+ Kg2 111.Qc2+ Qf2 112.Qg6+! Kf1 113.Qb1+ Qe1 114.Qf5+ Kg2 115.Qc2+ Qf2 116.Qg6+! Kh2 117.Qd6+ Kg1 118.Qg6+ Qg2 119.Qb1+ Kf2 120.Qc2+ Ke3 121.Qc3+ and the game was drawn after several more moves. A very

good defensive effort by White!

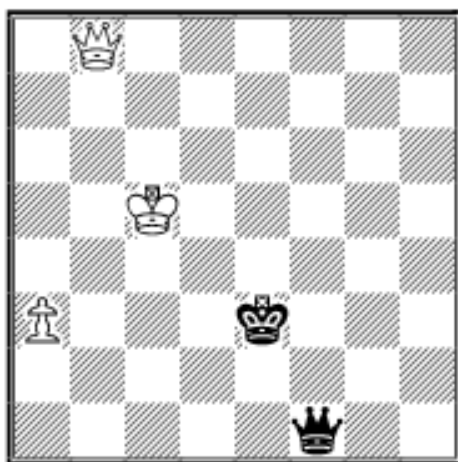
29.10 *F.Cruz* (2363) - *K.Vera* (2233) PER-ch Lima 2002



White won nicely: **39.e6!?** Opening a path for the king **39...Kd6** (39...Bxe6 40.Ke5! Bf7 41.Kf6! Be8 42.Ke7 Bd7 43.Kf7!+-) **40.Bxd5! Bxe6 41.Bxe6! Kxe6 42.Kc5! Kf6 43.Kb6! g5 44.fxg5+ hxg5 45.hxg5+! Kxg5 46.Kxa6! Kg4 47.Kxb5! Kf3**

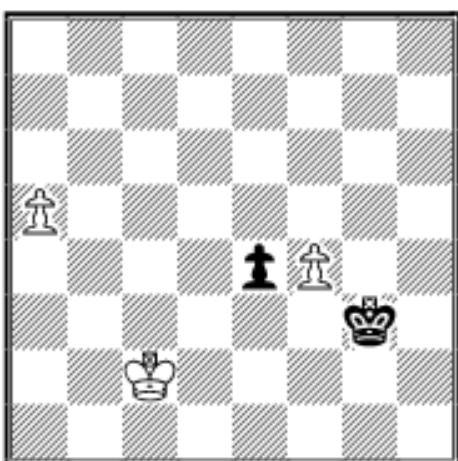


And now White wins by forcing the exchange of queens:
48.Kc5! Kxe3 49.b5! f4 50.b6! f3 51.b7! f2 52.b8Q! f1Q

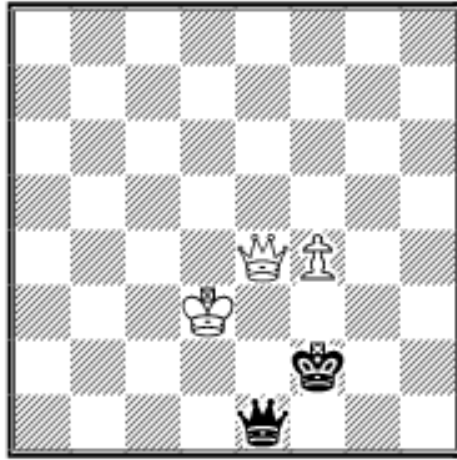


53.Qe5+ Kd2 54.Qd4+ 1-0

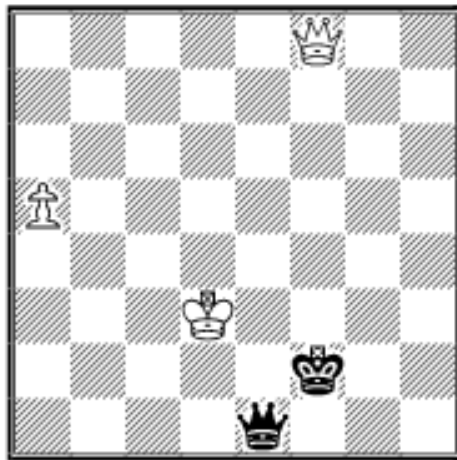
29.11 R.Pogorelov (2489) - G.Gonzalez Intelangelo (2228) Las Palmas open 1999



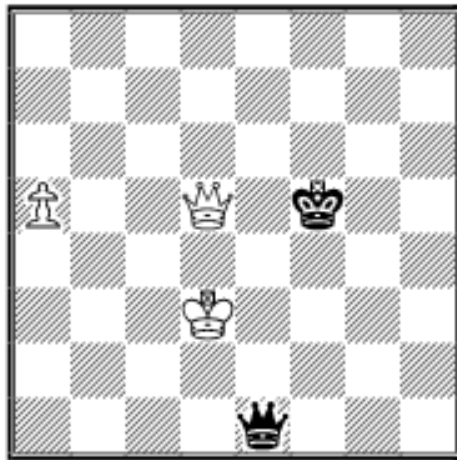
Normally White should try to keep his f-pawn as it usually wins, if the defending king can't get in front of it, but here it does not help: **59.f5** (59.a6 e3! 60.Kd3 Kf2! 61.a7 e2! 62.a8Q e1Q! 63.Qe4



centralizing the queen does not help here as Black has wheel checks: 63...Qb1+ 64.Kd4! Qb4+ 65.Kd5 Qb7+ 66.Ke5 Qe7+ 67.Kf5 Qh7+=) **59...e3! 60.Kd3 Kf2 61.f6 e2! 62.f7! e1Q! 63.f8Q+!**



The endgame is drawn as Black's king is well placed inside the drawing zone: **63...Kg2 64.Qg7+ Kh3 65.Qh6+ Kg4!** (65...Kg2? 66.Qd2+!+-) **66.Qg6+ Kf4 67.Qd6+ Kf5?! Heading in the wrong direction (67...Kf3!?)=) 68.Qd5+**



68...Kf6? (68...Kf4!)=) now it is firmly cut off in the losing zone and White never let's the win slip: **69.Kc4! Qc1+ 70.Kb5 Qb1+ 71.Kc6 Qc2+ 72.Kb6 Qb2+?! 73.Kc7?! Kg7 74.Qd7+ Kg8 75.Qd8+ Kg7 76.a6?! White's queen is not very central 76...Qc3+ 77.Kb8 Qb4+ 78.Kc8 Kh6?! 78...Qe4!?** is much tougher. **79.a7 Qg4+ 80.Qd7 Qc4+ 81.Qc7 Qa6+?! 82.Kd7 Kh5 83.Qh2+ 1-0**

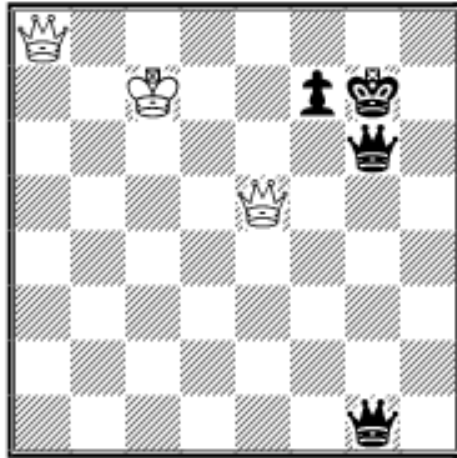
78...Qe4!? is much tougher. **79.a7 Qg4+ 80.Qd7 Qc4+ 81.Qc7 Qa6+?! 82.Kd7 Kh5 83.Qh2+ 1-0**

Addendum

The following recent game at very high level shows the

difficulty of queen endgames:

**P.Leko (2736) - G.Kasparov (2847) XX SuperGM
Linares 24.02.2003**



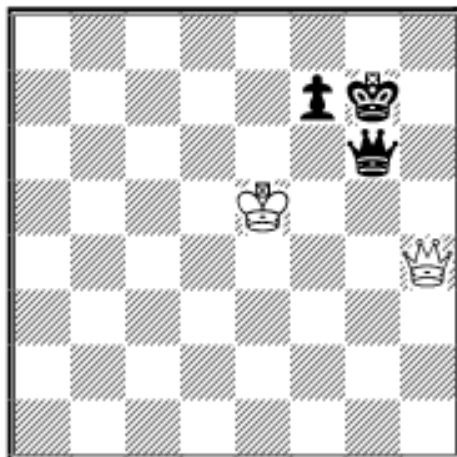
The f-pawn shields the king and Q+f-pawn vs Q is won, if the defending king does not manage to get in front of the pawn or at least very close to it.

74...Qf6? Now White can exchange queens as his king gets back in time. 74...f6! wins, e.g., 75.Qe7+ Kh6 76.Qaf8+

Kg5 77.Kb7 Q6b1+ 78.Qb4 (78.Kc6? Qgb6+ 79.Kd5 Qd3#) 78...Qxb4+ 79.Qxb4 Qg2+ 80.Kc7 Qd5 centralising the queen 81.Kc8 f5 and Black wins in 59 moves according to the tablebase.

75.Qh8+ (75.Qxf6+?! draws as well, but more care is required: 75...Kxf6 76.Qf3+ Kg6 77.Qe4+ Kg7 78.Qe5+!)=)

75...Kxh8 76.Qxf6+ Qg7 77.Qh4+ (77.Qxg7+?? Kxg7 78.Kd6 Kf6 79.Kd5 Kf5--+) **77...Kg8 78.Kd6!?** **Qg6+** (78...f5 79.Qd8+ Kf7 80.Qe7+ Kg6 81.Qxg7+ Kxg7 82.Ke5 Kg6 83.Kf4=) **79.Ke5 Kg7**



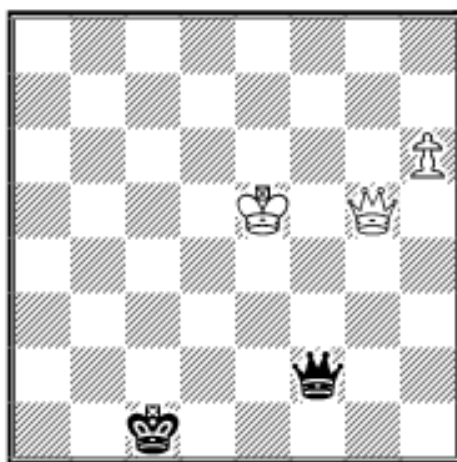
80.Qe7! the only move
80...Qg3+ 81.Kf5 Qg6+
82.Ke5 (Of course not 82.Kf4?? Qf6+--+) **82...Qh6**
83.Kf5 Qg6+ 84.Ke5 Kh7
85.Qh4+ Kg8 86.Qd8+ Kg7
87.Qe7 1/2-1/2

Sources:

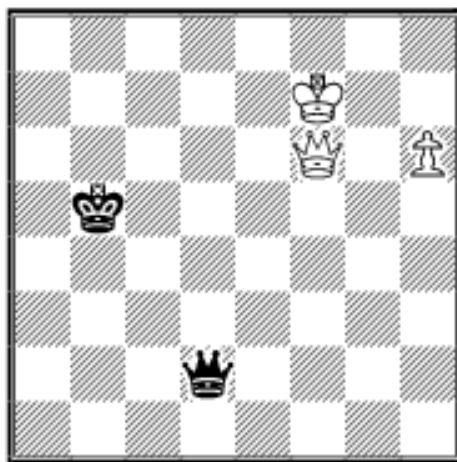
Fundamental Chess Endings, Karsten Müller and Frank Lamprecht, GAMBIT 2001

ChessBase MEGABASE 2003

The Week in Chess, weekly internet chess magazine edited by Mark Crowther

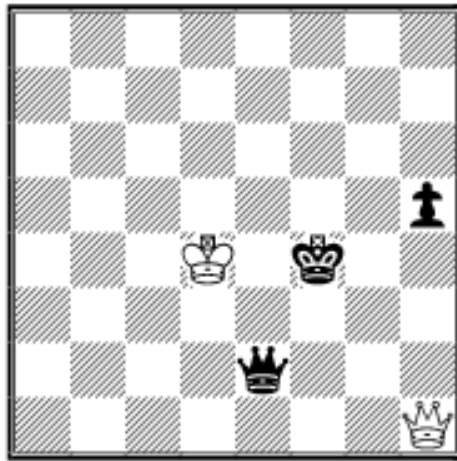
Solutions to last month exercises**E28.01 E.Bogoljubow - F.Sämisch Bad Harzburg 1938**

Black has to head for the southwest corner with **67...Kb2!** The game ended 67...Kd1? 68.Qg4+! **1-0** as the exchange of queen's can't be avoided. **68.Qf6** (68.h7?! Qh2+ 69.Qf4 Qxh7!=) **68...Qh2+** **69.Ke6+ Ka2!** **70.Kf7 Qc7+** **71.Qe7 Qf4+=**

E28.02 P.Keres - G.Gescheff Munich Olympiad 1936

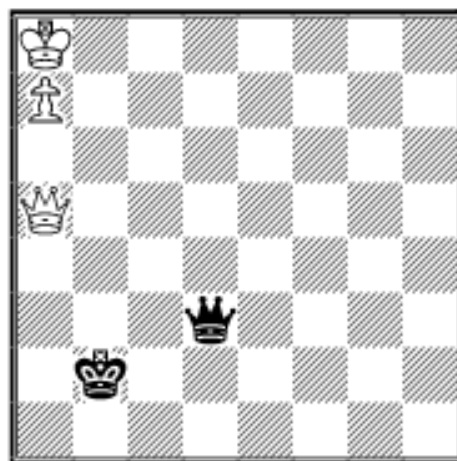
Black must head for the saving southwest corner immediately: **93...Ka4!** The game continued 93...Qd7+? 94.Kf8?! (94.Kg6 is more precise.) 94...Qc8+ 95.Kg7? Qg4+! and was later drawn. **94.h7 Qd7+!** **95.Kg6 Qg4+!** **96.Kf7 Qd7+!** **97.Kg8 Qg4+** **98.Kh8 Ka3=**

E28.03 K.Neporozhniy - O.Vovk (2293) Independence Cup op-B Kiev 2002



That was easy, wasn't it?
61...Qe3+ 62.Kd5 Qf3+
63.Qxf3+ 0-1

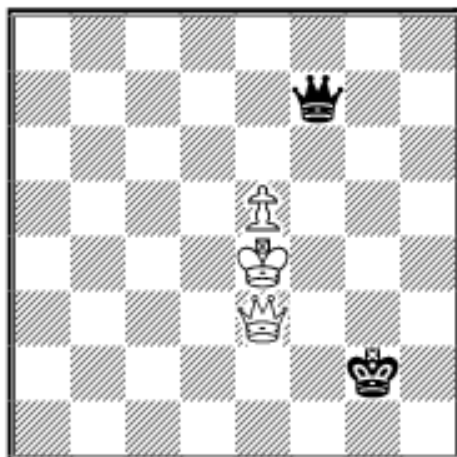
E28.04 M.Petursson - G.Gunnarsson Reykjavik 1976



103...Qb3! and the draw is clear, e.g., (The game ended
 103...Qe4+? 104.Kb8! Qe8+
 105.Kb7 Qe4+ 106.Ka6 Kb3
 107.Qd8 Qc4+ 108.Kb7 Qe4+
 109.Kb8 Qe5+?! 110.Qc7 Qe8+
 111.Kb7 Qe4+ 112.Qc6 Qe7+
 113.Ka6 **1-0** as 113...Qa3+
 114.Kb6 Qb4+ is answered by
 115.Qb5+-) **104.Qc7 Ka1**

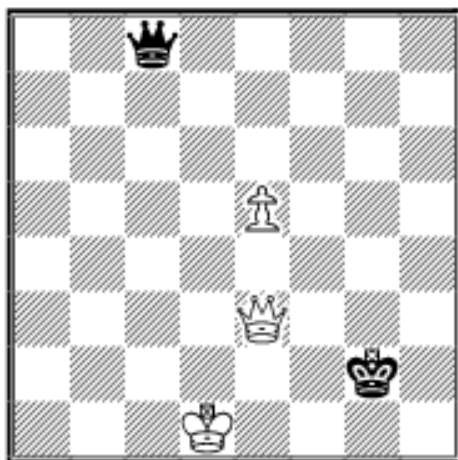
105.Qb7 Qg8+ 106.Qb8! Qd5+=

E28.05 V.Atlas (2501) - R.Polzin (2462) Austrian Staatsliga, Gleisdorf-Hohenems, 2nd board, Frohnleiten 2002



Surprisingly Black does not have perpetual check:
70...Qb7+ 71.Kf4 Qf7+
72.Kg4 Qe6+ 73.Kh4 Qc4+
74.Kg5 Qg8+ 75.Kf4 (75.Kf6!
 Qf8+ 76.Ke6 Qe8+ 77.Kd6
 Qf8+ 78.Kc6 Qc8+ 79.Kb5
 Qd7+ 80.Kb4 Qb7+ 81.Kc3
 Qc8+ 82.Kb2 Qb8+ (82...Qb7+

83.Qb3) 83.Kc2 Qc8+ 84.Kd1+-



and Black has run out of checks in both cases. The win is of course still a lot of moves away.) **75...Qf7+ 76.Ke4 Qb7+ 77.Kf4? Qf7+** and drawn by threefold repetition $\frac{1}{2}$ - $\frac{1}{2}$

Copyright 2003 Karsten Müller. All rights reserved.

*This column is available in **ChessCafe Reader** format. Click [here](#) for more information.*



[\[The Chess Cafe Home Page\]](#) [\[Book Reviews\]](#) [\[Bulletin Board\]](#) [\[Columnists\]](#)
[\[Endgame Studies\]](#) [\[The Skittles Room\]](#) [\[Archives\]](#)
[\[Links\]](#) [\[Online Bookstore\]](#) [\[About The Chess Cafe\]](#) [\[Contact Us\]](#)

Copyright 2003 CyberCafes, LLC. All Rights Reserved.

"The Chess Cafe®" is a registered trademark of Russell Enterprises, Inc.