



Queen vs. Two Rooks: Part Two

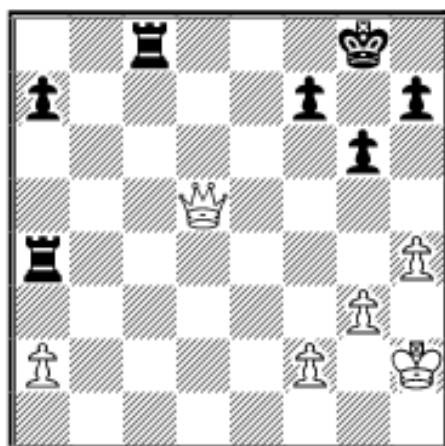
I continue the discussion from [last month](#), but this time I want to look at positions where the queen is more comfortable:

63.01 L.Aronian (2502) - R.Milu (2395)
Victor Ciocaltea Memorial Bucharest 1999

COLUMNISTS

Endgame Corner

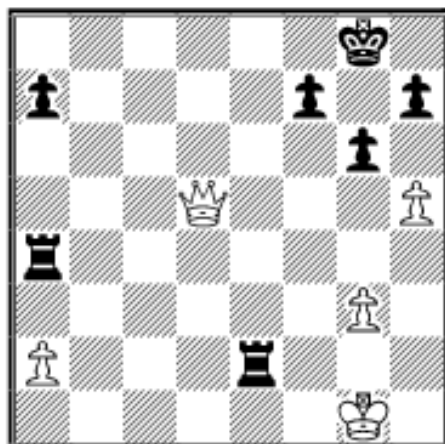
Karsten Müller



Black must act precisely to maintain any winning prospects, as White's queen finds many targets to attack, and Black's king is not completely safe because of the typical thrust h4-h5.

31...h5?

31...Rc2! 32.h5 Rxf2+ 33.Kg1 Re2

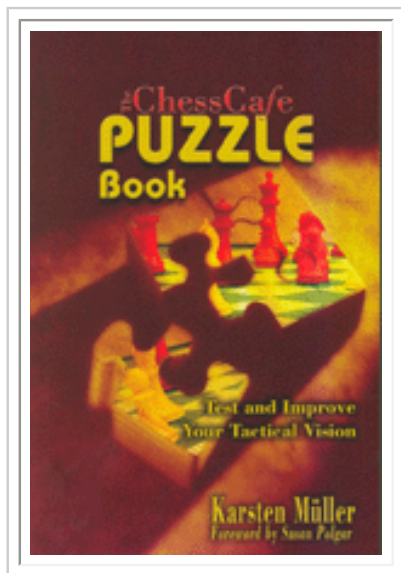


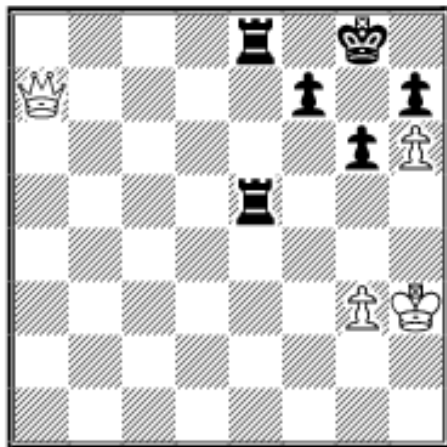
34.h6

A) 34.Kf1 Re8 (34...Rxa2? 35.h6=) 35.Qd7 Rae4.

B) 34.a3! is interesting as 34...Rxa3?? is met by 35.Qd8+ Kg7 36.h6+ Kxh6 37.Qf8+--.

34...Re1+ 35.Kg2 Re8 36.Qd7 Rxa2+ 37.Kh3 Rae2 38.Qxa7 R2e5.

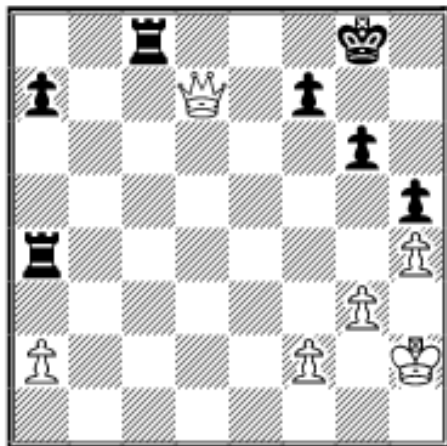




White's counterplay against Black's king still gives him drawing chances in all cases.

32.Qd7!

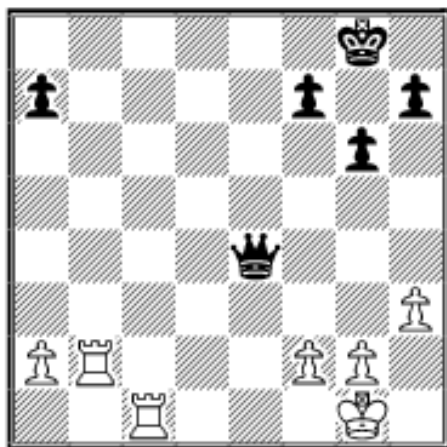
Now White can force a draw with his active queen.



**32...Rcc4 33.Qe8+ Kg7 34.Qe5+ Kf8
35.Qh8+ Ke7 36.Qe5+ Kd8 37.Qd5+ Ke7
38.Qe5+ Kf8 39.Qh8+ Ke7 40.Qe5+ Kf8
41.Qb8+ Kg7 42.Qe5+ Kh7 43.Qe8 Kg7
44.Qe5+ Kh7 45.Qe8 Kg7 1/2-1/2**

The next example is similar.

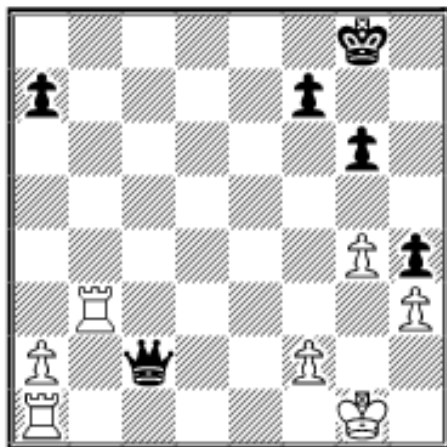
63.02 S.Shipov (2620) - D.Velimirovic (2535)
Belgrade-Moscow, Belgrade 1998



Black must threaten White's king to make it difficult to activate the rooks.

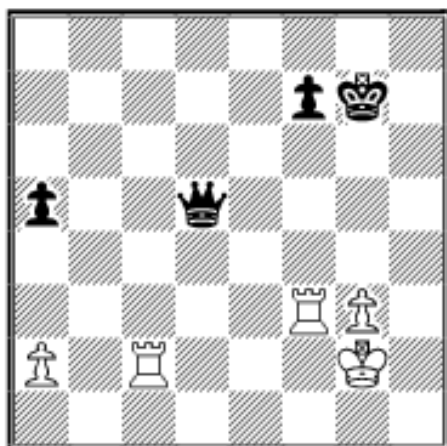
29...h5! 30.g3 a5?!

More precise was 30...h4 31.g4 Qd3
32.Rb3 Qd2 33.Ra1 Qc2.



31.Rb3?!

31.h4 was called for; e.g., 31...g5 32.hxg5 h4 33.Rc8+ Kg7 34.Rbc2 hxg3 35.fxg3 Qe3+ 36.Kg2 Qxg5 37.R8c3 Qd5+ 38.Rf3.



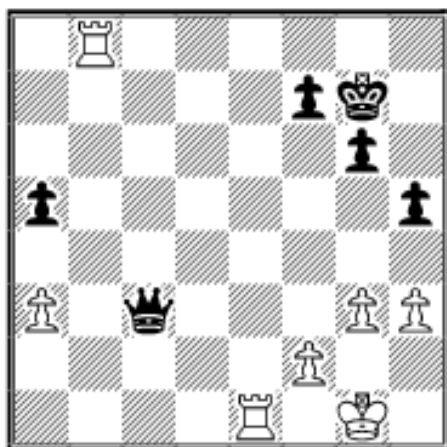
White's exposed king makes it difficult to make progress, but I think the winning chances are better than in the game, as the rooks coordinate better.

31...Qd5 32.Rcb1

32.h4 Qd2 33.Ra1 Qc2= (Stohl in CBM 64).

Qc3!

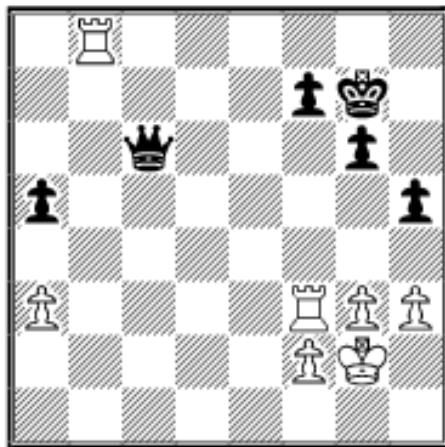
32...Qd2 33.a3 Qc2 34.Rb8+ Kg7 35.Re1



More or less forcing the draw.

36.Re3 Qc1+ 37.Kg2 Qc6+ 38.Kg1

38.Rf3?



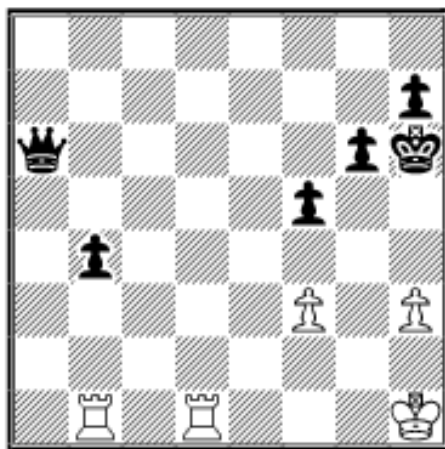
This even loses in typical fashion: 38...g5
39.g4 hxg4 40.hxg4 f5–+ (Stohl).

38...Qc1+ 39.Kg2 Qc6+ 1/2–1/2

Finally, one example that is clearly favorable for the queen.

63.03 S.Volkov (2567) - V.Tkachiev (2634)

Moscow Aeroflot Open 2002



White's rooks must passively defend his weaknesses and keep the passed b-pawn under control – a job rooks do not like at all.

46...Qe2! 47.Rf1 Kg5 and White is powerless: **48.Kg1 Kh4 49.Rf2 Qe3 50.Kg2**

50.Rxb4+ Kg3 51.Rbb2 Qc1+ 52.Rf1 Qxb2–+.

50...Qf4 51.Rbb2

51.Rb3 Qg3+ (51...g5!?) 52.Kf1 Kxh3 53.Rxb4 Qd6 54.Rfb2 Kg3 55.Rg2+ Kxf3 56.Rb3+ Kf4–+.

51...g5 52.Kh1 Qd6 53.Rfd2 Qf4 54.Rf2 h5 55.Kg2 Qg3+ 56.Kh1 Qd6 57.Rfd2

57.Kg2 Qb8 58.f4 g4 59.hxg4 hxg4 60.Rb3 Qd6 61.Kh2 Qd4–+.

57...Qc5 58.Rdc2 Qd4 59.Rd2 Qc3 60.Kg2 b3 61.Rf2 f4 62.Kh1 g4 63.fxg4 hxg4 64.hxg4 f3 65.Rb1

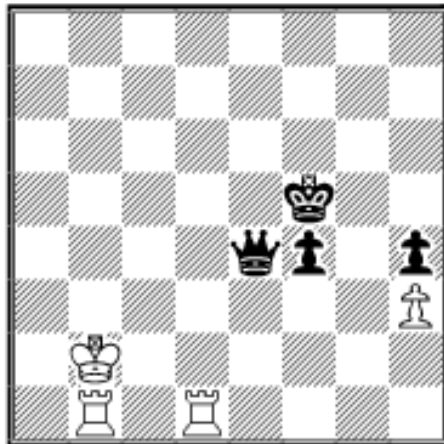
65.Kh2 Qe5+ 66.Kg1 Kxg4–+.

65...Kg3 0–1

Solutions to Last Month's Exercises

E62.01 G.Beikert (2444) - M.Godard (2353)

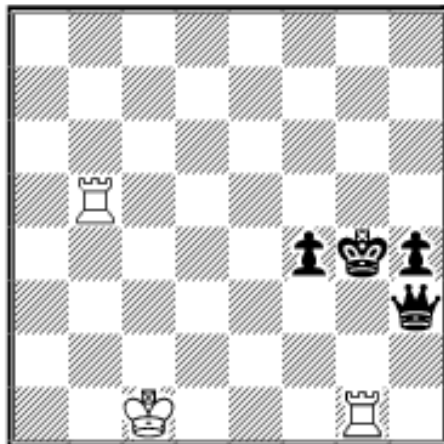
FRA-chT, France 2003



Black could have won with a timely sacrifice of his queen.

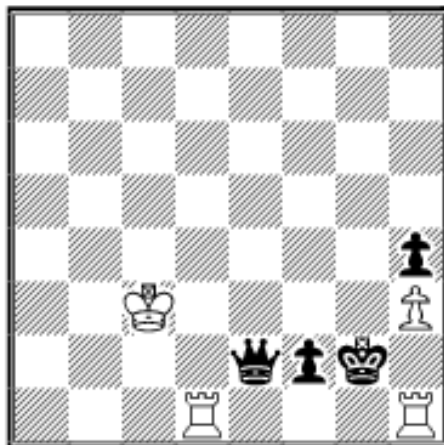
75...f3?

75...Qg2+ 76.Kc1 (76.Ka1 Qxh3 77.Rb5+ Kg4 78.Rg1+ Qg3 79.Rbb1 h3 80.Kb2 h2 81.Rh1 f3-) 76...Qxh3 77.Rb5+ Kg4 78.Rg1+.



Now 78...Qg3! 79.Rxg3+ fxg3 80.Kd2 g2 81.Rb8 Kg3 82.Rg8+ Kh2 83.Ke2 g1Q 84.Rxg1 Kxg1-+.

76.Rh1 f2 77.Kc3 Qe3+ 78.Kc4 Kf4 79.Rbd1 Qe2+ 80.Kc3 Kf3 81.Rd3+ Kg2 82.Rdd1



White has an impregnable fortress.

82...Qe3+ 83.Kc4 1/2-1/2



[\[Chess Cafe Home Page\]](#) [\[Book Review\]](#) [\[Columnists\]](#)
[\[Endgame Study\]](#) [\[The Skittles Room\]](#) [\[Archives\]](#)
[\[Links\]](#) [\[Online Bookstore\]](#) [\[About The Chess Cafe\]](#) [\[Contact Us\]](#)

Copyright 2006 CyberCafes, LLC. All Rights Reserved.

"**The Chess Cafe**®" is a registered trademark of Russell Enterprises, Inc.