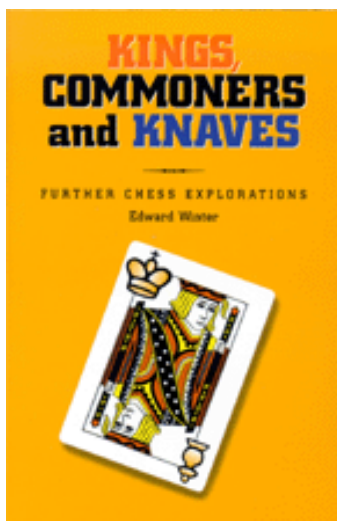




SKITTLES  
ROOM

## From the Archives

Hosted by  
Mark Donlan



[Kings, Commoners and Knaves](#)  
by Edward Winter

## From the Archives...

Since it came online over eight years ago, [ChessCafe.com](#) has presented literally thousands of articles, reviews, columns and the like for the enjoyment of its worldwide readership. The good news is that almost all of this high quality material remains available in the [Archives](#). The bad news is that this great collection of chess literature is now so large and extensive – and growing each week – that it is becoming increasingly difficult to navigate it effectively. We decided that the occasional selection from the archives posted publicly online might be a welcomed addition to the regular fare.

Watch for an item to be posted online at least once each week, usually on Thursday or Friday. We will update the [ChessCafe](#) home page whenever there has been a "new" item posted here. We hope you enjoy *From the Archives*...

---

## An Interview with Sam Reshevsky Part II

Conducted by Hanon W. Russell

*Since the mid-1930's, Grandmaster Sam Reshevsky (1911-1992) had been one of the America's greatest chessplayers, and, indeed one of the world's best. In his first international tournament, Margate 1935, he defeated the former world champion Jose Capablanca. In one of his last international tournaments, Moscow 1991, he defeated, among others, former world champion Vasily Smyslov.*

*We are pleased to present the complete text of an interview with Sam Reshevsky. The interview was conducted by Hanon Russell a few months before Reshevsky's 80th birthday in 1991. It was awarded the Chess Journalists of America's commendation for best interview of the year. Because of its length, we present it in two parts...*

**Hanon W. Russell:** In 1954 you played in the U.S. Championship, this time finishing ahead of Evans. Yet, by the mid-1950's, there is another prodigy on the scene. I don't know if you realize this or not, but in your first meeting with Fischer [the 1956 Rosenwald] you defeated him, winning on time. [This is the only instance known when Fischer lost a game by overstepping the time limit.] Tell me your first impressions of sitting down to play a 13-year old boy. You did not know who or what he would become.

**Sam Reshevsky:** No, but I had heard at that time the rumor that here was a kid that knew something about the game. It was not that I was simply playing a kid. I knew I wasn't going to run away with the game. I would have to fight to win the game.

**HWR:** Then, it only takes him a year to establish himself. One year later he wins the U.S. Championship. By the end of the 1950's and the beginning of the 1960's you and he are regarded as equal firsts in this country. Tell me what you can recall about your match with him being set up in 1961.

**SR:** This was basically an interest of Mrs. Piatigorsky and she saw to it that it took place. I don't think it was me trying to organize the match, or Fischer trying to organize it. I think she was the one who was interested in the match taking place.

**HWR:** That was a difficult match.

**SR:** Yes, indeed.

**HWR:** Tell me what you thought about that match, and what you thought your chances were before it started.

**SR:** I remember that I was not afraid that I might lose the match. I was confident that I had a good chance to win the match.

**HWR:** What did you think would be the way that you would win?

**SR:** I thought it might be very close. I knew he was very talented and I thought that the match might be very close.

**HWR:** Did you think Fischer had any weaknesses at that point that you would try to take advantage of?

**SR:** I thought he was a little bit wild in the openings, that is, of course, relatively speaking, that he took a lot of chances. I knew he was original in the openings, but I thought he took too many chances. Occasionally he took too many risks. Another thing I thought was in my favor was that he was overconfident. That was the impression I had of him.

**HWR:** How about his middle game play or endgame play? Did you have any opinions about that at that time?

**SR:** No, I thought his middle game was excellent and his endgame was, well, good enough.

**HWR:** Can you remember what your general strategy for the match was?

**SR:** I had no particular plans. I just thought that I was going to sit down, do my best and that should suffice.

**HWR:** The match ends in controversy. You were not directly involved in the controversy.

**SR:** Not at all.

**HWR:** What did you see happen?

**SR:** Well, what was known was that, for some reason the organizing committee had to go away for the 12<sup>th</sup> game. We were supposed to have played 16 games. We had played eleven. We were tied at that point, two wins each and seven draws. The 12<sup>th</sup> game was supposed to have been played on a Sunday. For some reason the organizing committee could not be there later on, so they scheduled the game for either 11 am or 1 pm on Sunday, I don't remember the time exactly. It was too early for Bobby Fischer. According to the official statement made by him, it was too early for him to get up. I myself don't buy that.

**HWR:** What do you think was going on?

**SR:** I think what happened in the eleventh game affected him to act that way.

**HWR:** What happened in the eleventh game?

**SR:** We played to the adjournment and he was very confident about it, saying he was going to win it. It was adjourned and we resumed the next morning. I was up quite a bit of the night studying and found a drawing variation. When he saw the moves I made that forced a draw, I think it affected him and broke his confidence. He was disappointed that he couldn't win that game. So, I think he decided that he had had enough of the match. That is my opinion. I have no proof of it.

**HWR:** He was always thought of as being a fighter too, though.

**SR:** Yes, but you see, when you announce that you are going to win the game, and you don't win the game, there is a difference. I may be wrong, but this is my opinion.

**HWR:** You go through, in the 1960's, a number of U.S. Championships. By the mid-60's of course, Fischer has established himself as not only the number one player in the country, but possibly the world. I want to ask you about a few specific items. The 1967 Sousse Interzonal; there is an incident in the game with Fischer.

**SR:** I know what it is.

**HWR:** Fischer drops out of the tournament. He is then paired with you as they do not know if he is returning. The round starts and with five minutes left on his clock, Fischer appears out of nowhere. First, let me mention to you what was written about this in the world press. It is said that you were visibly shaken when you saw him. You then sit down and as Black you play the Ruy Lopez against Fischer. At that point in time there were very few players in the world who knew the White side of the Ruy better than Fischer. You end up losing. You are very upset about the way the organizers handle it and the press is not too kind to you. They make you look like you are some kind of a crybaby. What happened with that game?

**SR:** What happened? Psychologically, I did not expect him to show up. When he did, it sort of affected me adversely: Psychologically. I think that had something to do with the way I handled the whole game.

**HWR:** Let me ask you a question. With five minutes to go on his clock before a forfeit on time is declared, when he plays 1 e4, why do you play the Ruy Lopez?

**SR:** I always used to play it against strong players and I had had very good results with it. I think that the fact I was disturbed that he showed up had something to do with my bad treatment of the opening.

**HWR:** If I remember the game correctly, there comes a point where you either invert moves or make a mistake and at move 14 or 15, and you drop a pawn.

**SR:** There is no doubt in my mind that his sudden appearance, which I didn't expect, affected me. It shouldn't have done that, but it did.

**HWR:** If you had that game to play over again, under the same circumstances, would you still play the black side of the Ruy?

**SR:** Sure, I would play it, yes.

**HWR:** I guess the point some people have made is that the choice of the Ruy Lopez was a bad choice psychologically.

**SR:** Well, I think it is a question of taste. I don't think you can say that it was a bad choice. I don't think that is the real answer. It was a psychological thing that happened to me that shouldn't have happened. And therefore, I played badly.

**HWR:** Let's take this from another perspective. In a dispute with the organizers, Fischer withdraws while leading the tournament. What was your opinion of what happened at Sousse; exclusive of your game?

**SR:** I think you might say that this was typical of Fischer. That is the way he handled himself generally. He always surprised everybody. The fact, for example, that he doesn't play anymore is also a surprise.

**HWR:** Do you have an opinion as to why, when he was leading the interzonal, dominating it, he would quit?

**SR:** There is no answer to that. It is unexplainable.

**HWR:** When we were in Palma de Mallorca in December of 1989, you told me an interesting thing. You told me that you and Fischer were the first two players to arrive for the 1970 Interzonal, also held at Palma and that you two spent several days' together sightseeing around Palma. You also told me that you were a bit surprised because, until then, you two had not been on such great terms, but then, you found him very friendly. Tell me a little bit about that experience.

**SR:** There was no one else there we knew, so we walked together, talked together. I thought he was quite friendly.

**HWR:** By this time, however, his extreme views on religion, Jews, Communists and everything else that Fischer did not agree with was well known. Were you uncomfortable with him? After all, you are an orthodox Jew and here is a fellow, he may be Bobby Fischer, but he certainly has nothing kind to say about Jewish people.

**SR:** I was not uncomfortable with his views at all. He has his views, I have my views. It didn't bother me. I tried to make him see the light. I didn't succeed, but I tried.

**HWR:** After his win over Spassky, he stops playing. There are some people out there who think that even if FIDE had met his every demand that he still would not have played. What is your opinion?

**SR:** My opinion is that the reason he never wanted to play again was because he wanted to remain an undefeated champion.

**HWR:** Throughout your whole career, you were notorious for getting into terrible time pressure. Why did you get into time pressure so much?

**SR:** The fact is that I was too thorough. Too thorough; I tried to figure out that which was impossible to figure out in the time allotted. I was so anxious to analyze the position to its end, so to speak, that I had a tough time getting out of the habit. Until I realized what was going on, I continued to get into time pressure.

**HWR:** You are one of the very few people around who have seen and met such a wide range of players. I would like to give you the names of players and I would like your view of them. First: Capablanca.

**SR:** Very strong. His endgame was far above most players.

**HWR:** Alekhine.

**SR:** Very original; especially in the openings. Whenever I saw him, and that was many times, he always had a pocket set in front of him. Even in the hotel lobby. He was always trying to find something new in the openings. And of course, he was brilliant in the middle game; a real attacking player.

**HWR:** Euwe.

**SR:** Euwe was strong, of course. He was outstanding in the opening, but insufficient in the endgame.

**HWR:** Botvinnik.

**SR:** An all-around player. It almost speaks for itself; World Champion for quite a few years, right?

**HWR:** Keres.

**SR:** Keres had only one weakness. He was not steady; other than that, very strong.

**HWR:** Emanuel Lasker.

**SR:** [Smiles] World Champion for 27 years. I was fortunate to play him once when he was past his prime. He was considered the greatest player for many, many years. His strength, I think, was in the middle game. Not so much in the opening or endgame.

**HWR:** Smyslov.

**SR:** A great player and still is, positionally; a lot of knowledge.

**HWR:** Najdorf.

**SR:** Najdorf was an attacking player, but unsteady.

**HWR:** Fine.

**SR:** Fine was a fine player. [Laughs]. Good in every aspect, endgame, openings but he too was not steady; strong, but not strong in every tournament.

**HWR:** Spassky.

**SR:** A fine player.

**HWR:** They say he is lazy.

**SR:** Yes, he sometimes does not like to work too hard. Maybe he's right! [Laughs].

**HWR:** Fischer.

**SR:** Outstanding, one of the greatest ever; a lot of talent, a lot of originality in the opening and middle game. I think his weakness was the endgame.

**HWR:** Karpov.

**SR:** Karpov is like a rock. Steady, steady, steady. He works hard and he succeeds. He's equipped in every phase of the game; a hard man to beat.

**HWR:** Kasparov.

**SR:** Very, very, very strong in all phases of the game. I think if I were to mention the greatest players ever, I probably would consider him one of them.

**HWR:** Speaking of the greatest, you are aware of the fact that when Fischer wrote an article for Frank Brady's magazine *Chessworld* he listed you as one of the ten greatest chessplayers ever. What did you think about that?

**SR:** I think he was right! [Laughs].

*It is difficult to present a "representative selection" of Reshevsky's games. However, at the risk of excluding games, which by other's criteria should be included, here are some of the legendary grandmaster's more famous games:*

### ***Reshevsky-Capablanca***

#### **Margate 1935**

##### **Queen's Gambit Declined**

1 d4 Nf6 2 c4 e6 3 Nc3 d5 4 Bg5 Nbd7 5 cd5 ed5 6 e3 Be7 7 Bd3 O-O 8 Qc2 c5 9 Nf3 c4 10 Bf5 Re8 11 O-O g6 12 Bh3 Nf8 13 Bc8 Rc8 14 Bf6 Bf6 15 b3 Qa5 16 b4 Qd8 17 Qa4 a6 18 b5 Re6 19 Rab1 Rb8 20 Rb2 Be7 21 ba6 Ra6 22 Qc2 Ne6 23 Rfb1 Ra7 24 a4 Nc7 25 Ne5 Qe8 26 f4 f6 27 Ng4 Qd7 28 h3 Kg7 29 Nf2 Ba3 30 Ra2 Bd6 31 Nfd1 f5 32 Nb5 Ra5 33 Nc7 Bc7 34 Nc3 Qe6 35 Qf2 b6 36 Qf3 Rd8 37 Rab2 Qe7 38 Rb4 Rd7 39 Kh1 Bd8 40 g4 fg4 41 hg4 Qd6 42 Kg1 Bc7 43 Kf2 Rf7 44 g5 Bd8 45 Ke2 Bg5 46 Rb6 Qa3 47 Kd2 Be7 48 Rb7 Ra4 49 Qd5 Ra5 50 Qc4 Rh5 51 Kd3 Qa8 52 Qe6 Qa3 53 Rd7 Rhf5 54 Rb3 Qa1 55 Re7 Qf1 56 Kd2 1-0

### ***Alekhine-Reshevsky***

#### **Nottingham 1936**

##### **Queen's Pawn Game**

1 Nf3 d5 2 d4 Nf6 3 e3 c5 4 c3 Nbd7 5 Nbd2 Qc7 6 Qa4 g6 7 c4 Bg7 8 cd5 Nd5 9 Qb3 N5b6 10 a4 cd4 11 ed4 a5 12 Bb5 O-O 13 O-O Nf6 14 Re1 Bf5 15 Nf1 Qd6 16 Qa3 Qa3 17 Ra3 Nfd5 18 Ng3 Bd7 19 Rb3 Rfd8 20 Bd2 Na4 21

Ra1 Nab6 22 Ra5 Bb5 23 Rbb5 e6 24 b3 Rd7 25 Ne4 Ra5 26 Ba5 Nc8 27 Ne5  
Be5 28 de5 Nc7 29 Nf6 Kg7 30 Nd7 Nb5 31 Bd2 Ne7 32 Kf1 Nd4 33 b4 Nd5  
34 Nc5 b5 35 Nd3 f6 36 Bc1 fe5 37 Ne5 Nc2 38 Bb2 Ncb4 39 Ke2 Kg8 40 g3  
Ne7 41 Nf3 Ned5 42 Ng5 Nc7 43 Ke3 Nc6 44 f4 h6 45 Nf3 Kf7 46 Kd3 Nd5  
47 Bc1 Nf6 48 Bb2 Nd7 49 Ba3 e5 50 Ke3 Ke6 51 Bb2 Kd5 52 Nh4 Nb6 53  
Bc1 Nc4 54 Kf2 Nb4 55 Ke2 Na2 56 Bd2 b4 57 fe5 b3 58 Kd1 Ne5 59 Ng2  
Ke460 h4 Nd3 61 Ba5 Nb2 0-1

*Em. Lasker-Reshevsky*

**Nottingham 1936**

**Queen's Gambit Accepted**

1 d4 d5 2 c4 dc4 3 Nf3 Nf6 4 e3 e6 5 Bc4 c5 6 Nc3 a6 7 O-O b5 8 Bd3 cd4 9  
ed4 Bb7 10 Bg5 Be7 11 Qe2 O-O 12 Rad1 Nbd7 13 Ne5 Nd5 14 Bc1 Nc3 15  
bc3 Nf6 16 a4 Qd5 17 Nf3 Rfc8 18 Bb2 Ne4 19 Rc1 Ng5 20 ab5 ab5 21 Bb5  
Nf3 22 gf3 Qg5 0-1

*Bogolyubov-Reshevsky*

**Nottingham 1936**

**Nimzo-Indian Defense**

1 d4 Nf6 2 c4 e6 3 Nc3 Bb4 4 a3 Bc3 5 bc3 O-O 6 e3 d5 7 Bd3 c5 8 cd5 Qd5 9  
Qf3 Qd8 10 Qe2 Qc7 11 Bb2 e5 12 de5 Qe5 13 c4 Qe7 14 Nf3 Nc6 15 Qc2  
Re8 16 h3 Ne4  
17 O-O-O Bf5 18 g4 Bg6 19 h4 Nf6 20 Bg6 fg6 21 h5 Qe4 22 Qe4 Ne4 23 hg6  
hg6 24 Rh2 Rad8 25 Rdh1 Kf7 26 Rh7 Rg8 27 Kc2 Rdf8 28 R1h2 Ke6 29  
R7h3 Rd8 30 Rh7 Rgf8 31 R2h3 Rd7 32 Rg7 Rg7 33 Bg7 Rf7 34 Bc3 Nf2 35  
Ng5 Kd7 36 Rh6 Re7 37 Rg6 Ng4 38 e4 Nge5 39 Rg8 Nc4 40 Bf6 Re8 41 Re8  
Ke8 42 a4 Kd7 43 Kc3 N4e5 44 Kb3 Ke8 45 Kc3 a6 46 Bg7 Ke7 47 Nh3 b5 48  
ab5 ab5 49 Nf4 Nd7 50 Nd5 Kd6 51 Ne3 Nce5 52 Nf5 Kc6 53 Ne7 Kb6 54  
Nd5 Ka5 55 Kb3 b4 56 Ne3 Kb5 57 Nd5 c4 58 Kc2 Ka4 59 Bh6 Nc5 60 Bd2  
b3 61 Kb1 Ne4 62 Nc3 Nc3 63 Bc3 Nd3 64 Bg7 Nc5 65 Bb2 Ne4 66 Ba1 c3 67  
Kc1 Kb4 68 Kb1 Kc4 69 Kc1 Kd3 70 Kb1 Kd2 71 Bb2 cb2 72 Kb2 Nc5 0-1

*Euwe-Reshevsky*

**AVRO 1938**

**Indian Defense**

1 d4 Nf6 2 c4 g6 3 f3 d5 4 cd5 Nd5 5 e4 Nb6 6 Nc3 Bg7 7 Be3 O-O 8 f4 Nc6 9  
d5 Nb8 10 Nf3 c6 11 Qb3 cd5 12 Nd5 Nd5 13 ed5 Nd7 14 Be2 Qa5 15 Bd2  
Qb6 16 Bc3 Bc3 17 bc3 Qe3 18 c4 Qf4 19 O-O Qc7 20 Kh1 Nf6 21 Qe3 Bg4  
22 Qh6 Bf3 23 Rf3 b5 24 cb5 Qe5 25 Re1 Nd5 26 Rh3 Qg7 27 Qd2 e6 28 Rd3  
Rab8 29 a4 Nb6 30 Qb4 Rbc8 31 a5 Nd5 32 Qb3 Rc5 33 Bf3 Rb8 34 Bd5 Rcb5  
35 Qa2 ed5 36 Rd5 Qc3 37 Rf1 Rb2 38 Qa4 Rb1 39 Rdd1 Rd1 40 Rd1 a6 41 h3  
Rb5 42 Ra1 Kg7 43 Qa2 Qb2 44 Qa4 Rg5 45 Ra2 Qc3 46 Ra1 h5 47 Qa2 Rf5  
48 Kh2 g5 49 Qa4 Rf4 50 Qa2 g4 51 hg4 Qe5 52 g3 Re4 53 Qb1 Re2 54 Kh3  
hg4 55 Kh4 Rh2 56 Kg4 Qe2 0-1

*Fine-Reshevsky*

**AVRO 1938**

**Ruy Lopez**

1 e4 e5 2 Nf3 Nc6 3 Bb5 a6 4 Ba4 Nf6 5 O-O Be7 6 Re1 b5 7 Bb3 d6 8 c3 Na5

9 Bc2 c5 10 d4 Qc7 11 h3 O-O 12 a4 Bd7 13 Nbd2 cd4 14 cd4 Rfc8 15 Bd3  
ba4 16 Qe2 Nh5 17 g3 Rcb8 18 Kg2 g6 19 Ra3 ed4 20 Nd4 Bf6 21 N2f3 Qb6  
22 Qd2 Nc6 23 Nc2 Qa5 24 Qa5 Na5 25 e5 de5 26 Ne5 Be8 27 g4 Ng7 28 Nd4  
Rd8 29 Ndf3 Be7 30 Ra2 Ne6 31 Bf1 Nb3 32 Be3 Bb4 33 Rb1 a5 34 Kg1 Kg7  
35 Be2 f6 36 Nc4 Bb5 37 Kf1 Rac8 38 Nb6 Be2 39 Ke2 Rc2 40 Kf1 a3 41 ba3  
Ra2 42 ab4 Rd3 43 ba5 Ra5 44 Kg2 Ra2 45 Kg3 Nec5 46 Re1 Ne4 47 Kg2 Rc2  
48 Na4 f5 49 gf5 gf5 50 Ne5 Rd5 51 Nf3 Kf6 52 Rb1 Ra5 53 Rb3 Ra4 54 Rb6  
Ke7 55 Nd4 and 0-1

***Keres-Reshevsky***

**World Championship Tournament 1948**

**Ruy Lopez**

1 e4 e5 2 Nf3 Nc6 3 Bb5 a6 4 Ba4 Nf6 5 O-O Ne4 6 d4 b5 7 Bb3 d5 8 de5 Be6  
9 Qe2 Nc5 10 Rd1 Nb3 11 ab3 Qc8 12 Bg5 h6 13 Bh4 Bc5 14 Nc3 g5 15 Bg3  
Qb7 16 Nd5  
O-O-O 17 Nf6 g4 18 Ne1 Nd4 19 Qf1 h5 20 Bf4 h4 21 Be3 h3 22 Rd2 hg2 23  
Qg2 Nf3 24 Nf3 Be3 25 Rd8 Rd8 26 Ne1 Bd4 27 Nd3 Bf5 28 Re1 a5 29 Ne4  
Kb8 30 b4 a4 31 c3 Be4 32 Re4 Bc3 33 Re3 Qg2 34 Kg2 Rd3 35 Rd3 Bb2 36  
Rd5 c6 37 Rd8 Kc7 38 Ra8 Kb7 39 Rf8 Be5 40 Rf7 Kb6 41 f4 0-1

***Reshevsky-Botvinnik***

**Moscow 1955**

**Slav Defense**

1 d4 e6 2 c4 d5 3 Nc3 c6 4 e3 Nf6 5 Nf3 Nbd7 6 Bd3 dc4 7 Bc4 b5 8 Bd3 a6 9  
e4 c5 10 e5 cd4 11 Nb5 Ne5 12 Ne5 ab5 13 Qf3 Qa5 14 Ke2 Bd6 15 Qc6 Ke7  
16 Bd2 b4 17 Qd6 Kd6 18 Nc4 Kd7 19 Na5 Ra5 20 Rhc1 Ba6 21 Ba6 Ra6 22  
Rc4 Nd5 23 Rd4 Rb8 24 Kd3 h5 25 Kc4 b3 26 a4 Rc6 27 Kd3 Rc2 28 Rb1  
Rbc8 29 a5 R8c6 30 Ke2 Rd6 31 Ke1 Nc7 32 Rd6 Kd6 33 Bc3 f6 34 Ra1 Na6  
35 Ra3 Kc7 36 Rb3 Nc5 37 Rb5 Na4 38 Bd4 e5 39 Kd1 Rc4 40 Be3 Kc6 41  
Rb8 Kc7 1-0

***Reshevsky-Fischer***

**1965/66 U.S. Championship**

**Nimzo-Indian Defense**

1 d4 Nf6 2 c4 e6 3 Nc3 Bb4 4 e3 b6 5 Bd3 Bb7 6 Nf3 O-O 7 O-O Bc3 8 bc3  
Be4 9 Qc2 Bd3 10 Qd3 d6 11 e4 e5 12 Bg5 Nbd7 13 Nh4 h6 14 Bd2 Re8 15  
Rae1 Nf8 16 Nf5 Ng6 17 f4 ed4 18 cd4 c6 19 d5 cd5 20 cd5 Ne7 21 Ng3 Rc8  
22 Bc3 Ng6 23 Bd4 Kh7 24 Nf5 Rc7 25 Kh1 Rg8 26 Re3 Nh5 27 Ref3 Nf6 28  
Rh3 b5 29 g4 Ng4 30 Qg3 Qe8 31 Nd6 Qe7 32 e5 Nf6 33 f5 Nd5 34 fg6 fg6 35  
Nf7 Qf7 36 Rf7 Rf7 37 e6 Rf1 38 Kg2 Rf5 39 Rh4 Re8 40 Qd6 Ref8 41 h3 Rc8  
42 Re4 Rc2 43 Kg3 Rd2 44 e7 Rg5 45 Rg4 Ne7 46 Rg5 hg5 47 Qe7 Rd4 48  
Qa7 Rf4 49 Qe7 Rf5 50 Qe8 Rc5 51 Kf3 Rc2 52 Qe6 Rc1 53 Qb3 Rc5 54 Ke4  
Rf5 55 Kd4 Kh8 56 Kc3 Kh7 57 Kb4 Re5 58 a3 Kh6 59 Qg8 g4 60 h4 g5 61 h5  
1-0



[\[ChessCafe Home Page\]](#) [\[Book Review\]](#) [\[Bulletin Board\]](#) [\[Columnists\]](#)  
[\[Endgame Study\]](#) [\[Skittles Room\]](#) [\[Archives\]](#)  
[\[Links\]](#) [\[Online Bookstore\]](#) [\[About ChessCafe\]](#) [\[Contact Us\]](#)

Copyright 2004 CyberCafes, LLC. All Rights Reserved.

"**The Chess Cafe**®" is a registered trademark of Russell Enterprises, Inc.