



SKITTLES ROOM



by Nikolay Minev

Double-Mates

by IM Nikolay Minev

The game below is a classic example of the double-mate mating pattern in the opening stage of the game. The mate occurs because Black “assists” with some terrible moves, but this doesn’t diminish the effect of White’s beautiful execution.

Demby-Cohen

Sicilian Defense B43

London 1932

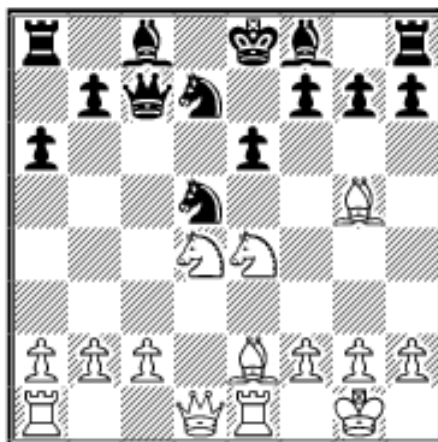
1.e4 c5 2.Nf3 e6 3.d4 cxd4 4.Nxd4 a6 5.Be2 Qc7 6.O-O Nf6 7.Nc3 d5?

Behind in development, Black has no right to open the center!

8.Re1!? dxe4

A mate shadow already hovers above Black’s position: if 8...e5, then 9.Nxd5 Nxd5 10.exd5 exd4 11.Bb5+ Kd8 12.Re8 mate.

9.Bg5 Nd5? 10.Nxe4 Nd7?



11.Nxe6! fxe6 12.Bh5+ g6 13.Qxd5!
exd5 14.Nd6+ mate 1-0

There exists a wealth of examples with rook+knight double-mate in the middlegame.

Tsaturian-Seny

King’s Gambit C38

Tbilisi 1973

There is some confusion about this game.

ECO quotes it as Tsaturian-Hodashevich, USSR 1974, while I found the entire game in a reliable source, *Shakhmaty Riga* (19/1974, p.19), as

presented here.

1.e4 e5 2.f4 exf4 3.Nf3 g5 4.Bc4 Bg7 5.O-O d6 6.d4 h6 7.Nc3 c6?!

Preferable alternatives are 7...Be6 or 7...Nc6.

8.g3 Bh3 9.Rf2 fxc3? 10.Bxf7+! Kxf7 11.Ne5+

The “simple” double-check is a powerful tactical opportunity! Now Black’s king must go ahead, because 11...Ke7 (11...Ke8 12.Qh5+) 12.Rf7+ Ke8 13.Qh5 leads to an immediate mate.

11...Ke6 12.d5+! Kxe5 13.hxc3 Bd7 14.Be3 c5 15.Ne2

According to *ECO*, White wins quicker by 15.Rf7 followed 16.Bf4+, which is probably true, but 15...Qf6 seems a defensive attempt that at least prolongs Black’s resistance.

15...Qb6 16.Qd2 Ne7

If 16...Qxb2, then 17.Raf1 Ne7 18.Rf7 Re8 19.Bf4+ and mate next move.

17.Qc3+ Kxe4 18.Qd3+ Ke5 19.Re1 Nxd5 20.Bd4+! cxd4



21.Qe4+!! 1-0

After 21...Kxe4 our double-mate is fulfilled by 22.Nc3+.

There is one variation in the Sicilian Defense that is entirely out of business on account of the rook+knight double-mate.

Foeling-Lindblom

Sicilian B96

Gausdal 1971

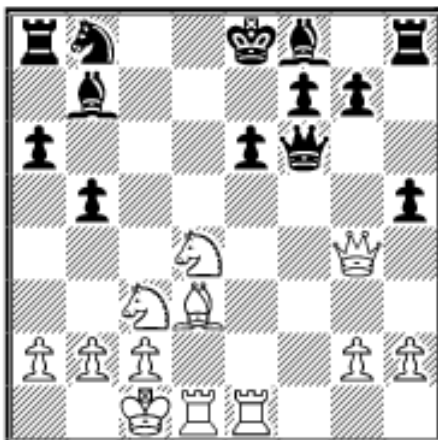
1.e4 c5 2.Nf3 d6 3.d4 cxd4 4.Nxd4 Nf6 5.Nc3 a6 6.Bg5 e6 7.f4 b5 8.e5 dxe5 9.fxe5 Qc7 10.Qe2 Nfd7 11.O-O-O Bb7 12.Qg4 Qxe5 13.Bd3 Nf6?

Black should play 13...h6.

14.Bxf6! Qxf6?

Better, but still insufficient, is 14...gx6.

15.Rhe1 h5



16.Nxe6! hxg4 17.Bxb5+!!

The point. If 17...axb5 18.Nxg7+ or 18.Nc7+, a double choice for a double mate! Incidentally, there is another typical mate, if Black doesn't accept the bishop's sacrifice.

17...Ke7 18.Nxf8+ Qe6

There it is! If 18...Kxf8 19.Re8 mate!
The rest of the game is only matter of

time and moves.

**19.Nxe6 fxe6 20.Bc4 Rh6 21.Nd5+ Bxd5 22.Rxd5 Rxh2 23.Rg5 Kf6
24.Rxg4 g5 25.Rf1+ Kg6 26.Rf8 Kg7 27.Rc8 Kf6 28.Re4 Rxg2 29.Rxe6+
Kf5 30.Bd5 1-0**

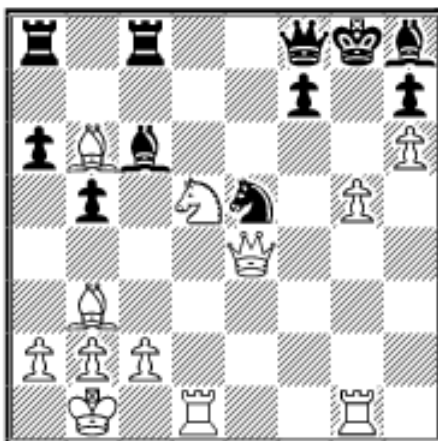
In this double-mate pattern the rook is often replaced by the queen.
Examples can be seen at the end of this article.

A Double-Mate with a Bishop and Knight

The following example shows how the bishop+knight pattern is feasible as a result of a complicated tactical operation.

Kiss-Kornin

Corr. 1974



White to move.

1.g6!

To start, a typical kamikaze pawn!

**1...hxg6 2.Rxg6+! Nxg6 3.Qxg6+! fxg6
4.Nf6+ mate 1-0**

A Double-Mate with a Rook and a Pawn

The rook+pawn pattern is a relatively rare occurrence. The most popular example here is Dake-De Burca (*see the end of this article*). Another American example from my collection is presented below. It is attractive, but not so clearly demonstrative of our topic.

Kenneth Harkness-Witeczek

Giuoco Piano C54

USA (Ohio) 1962

1.e4 e5 2.Nf3 Nc6 3.Bc4 Nf6 4.d3 Bc5 5.O-O d6 6.c3 Bg4 7.b4 Bb6 8.a4 a5 9.b5 Ne7 10.Nbd2?

White should play 10.Be3.

10...Qd7 11.Qb3 O-O 12.Ba3 h6 13.Rfe1 Ng6 14.d4 Rfe8 15.Bd3 Nf4 16.Qc2 Nxc2!

A typical destruction of the castled position and the best move; another, but not so effective possibility is 16...Bxf3 first, and if 17.Nxf3 Nxc2 (or 17...Qg4 18.g3 Qxf3).

17.Kxg2 Bxf3+ 18.Kxf3

Or 18.Nxf3 Qg4+ and mate next move.

18...Qg4+ 19.Ke3



Now 19...exd4+ 20.cxd4 Nd5+ is mate, but Black prefers the double-mate pattern with a rook and a pawn.

19...Nd5+ 20.exd5 exd4+ mate 0-1

As a *finale* of the delightful double-mate pattern, please consider (or recall) the following, mostly classic, examples.

Mikhail Chigorin-George Gossip

Ponziani C44

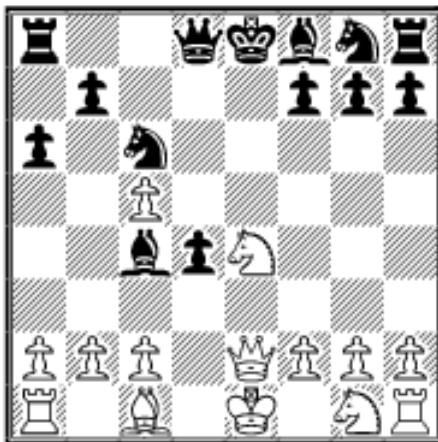
New York 1889

1.e4 e5 2.Nf3 Nc6 3.c3 d5 4.Qa4 f6 5.Bb5 Nge7 6.exd5 Qxd5 7.d4 Bd7
8.O-O e4 9.Nfd2 Ng6? 10.Bc4 Qa5 11.Qb3 f5? 12.Bf7+ Ke7 13.Nc4 Qa6
14.Bg5+! Kxf7 15.Nd6+ mate! 1-0

E.Bowley-Harmer

French C10
England 1950

1.e4 e6 2.d4 d5 3.Nc3 c5 4.exd5 exd5 5.Bb5+ Nc6 6.dxc5 d4 7.Qe2+ Be6
8.Ne4 a6 9.Bc4 Bxc4??



10.Nf6+ mate! 1-0

Sunderstrom-Holm
Petroff Defense C42
Stockholm 1912

(It is possible that Rundstrom is White as claimed by Kurt Richter.)

1.e4 e5 2.Nf3 Nf6 3.Nxe5 d6 4.Nf3 Nxe4 5.Nc3 Nxc3
6.dxc3 Be7 7.Bd3 O-O? 8.h4! Re8
9.Be3 Nc6 10.Bxh7+! Kxh7 11.Ng5+ Kg6
12.h5+ Kf6 13.Qf3+ Bf5 14.g4 Qc8
15.Ne4+ Ke5 16.Qf4+ Kd5 17.O-O-O+ Kc4
18.Nxd6+ mate! 1-0

Herman Helms-Oscar Tenner

Evans Gambit C51
New York 1942

1.e4 e5 2.Nf3 Nc6 3.Bc4 Bc5 4.b4 Bb6 5.a4 a6 6.a5 Ba7 7.b5 axb5 8.Bxb5
Nf6 9.Ba3 Nxe4? 10.Qe2 Nxf2 11.Nxe5 Nd4 12.Nxd7+! Nxe2 13.Nf6+
mate! 1-0

Weaver Adams-NN

King's Gambit Declined C30
Boston (Simul) 1947

1.e4 e5 2.Nc3 Bc5 3.f4 d6 4.Nf3 Nc6 5.Bb5 f6? 6.fxe5 fxe5 7.Nxe5 dxe5
8.Qh5+ Kf8 9.Rf1+ Nf6 10.Nd5 Be6 11.d4! Nxd4 12.Rxf6+ gxf6 13.Bh6+
Kg8 14.Bc4 c6



15.Qg4+!! Kf7

If 15...Bxg4 16.Ne7+ or 16.Nxf6+, two opportunities for a double-mate!

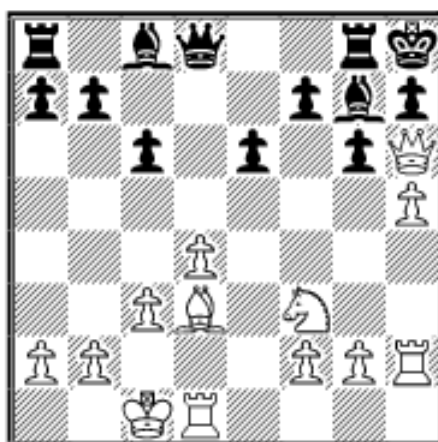
16.Qg7+ Ke8 17.Nxf6+ 1-0

Arthur Dake-De Burca

French Defense C11

Warsaw (Ol) 1935

1.e4 e6 2.d4 d5 3.Nc3 Nf6 4.Bg5 dxe4
5.Nxe4 Be7 6.Bxf6 Bxf6 7.Nf3 Nd7 8.c3 O-O 9.Qc2!? Be7? 10.O-O-O c6?
11.h4 Nf6 12.Nxf6+ Bxf6 13.Bd3 g6 14.h5 Kg7 15.Rh2 Rg8 16.Qd2 Kh8?
17.Qh6 Bg7



18.Qxh7+!! Kxh7 19.hxg6+ mate! 1-0

 [TOP OF PAGE](#)

 [HOME](#)

 [COLUMNS](#)

 [LINKS](#)

 [ARCHIVES](#)

 [ABOUT THE
CHESS CAFE](#)

[\[ChessCafe Home Page\]](#) [\[Book Review\]](#)[\[Columnists\]](#)
[\[Endgame Study\]](#) [\[Archives\]](#) [\[Links\]](#)
[\[Online Bookstore\]](#) [\[About The Chess Cafe\]](#) [\[Contact Us\]](#)

Copyright 2005 CyberCafes, LLC. All Rights Reserved.

"The Chess Cafe®" is a registered trademark of Russell Enterprises, Inc.