



CHESSCAFE

CHESSBASE TRAINING DISK INSTALLATION INSTRUCTIONS

by Steve Lopez

The topic of installing ChessBase training databases is a bit complex, not because the procedure is difficult, but because the CDs and DVDs contain different elements (databases and opening books) and the specific contents will vary from disk to disk. Throw in the fact that different programs (*ChessBase*, *Fritz* [or other ChessBase playing programs], *ChessBase Reader* [the multiple versions of which further complicate matters]) might be used to access the data on these CDs, and the topic becomes almost too unwieldy for convenient description.

Because the contents may vary widely from disk to disk, a certain amount of investigation will be required on the part of the user as to the specific contents of the disk just purchased. This tutorial will offer general guidelines for installation of ChessBase training CDs as well as specific procedures according to the program being used.

TECHNICAL CONSIDERATIONS

Be aware right off the bat that the databases and opening books on ChessBase training CDs don't need to be copied to the hard drive; they can be accessed directly from the CD or DVD. If you access the materials directly from the disk, you won't be able to add your own commentary/annotations to games on the disk and *Fritz* (or another playing program) won't be able to change the "weighting" of variations in the disk's opening book. These are fairly minor considerations; in fact, the author of this tutorial has been accessing databases directly from CD/DVD as "standard procedure" for years.

If you should decide to install/copy the contents of a training CD/DVD to your hard drive, you need to be

aware that this typically requires a great deal of hard disk space. A recent CD offering, *1000 Opening Traps*, contains no opening book and has limited multimedia elements, so at 3 MB or so it will easily fit on just about any hard drive. Much more typical for a training CD's space requirement is *Dutch A80-A85*, which contains nearly 100 MB of databases and opening books.

Training DVDs, on the other hand, require an even **greater** amount of hard disk storage space than CDs. As an example, the DVD *The Trompowsky - The Easy Way* contains more than 750 MB of data to be copied to the hard disk, most of which consists of video content.

So please be sure to check the available space on your hard drive before installing the data from training CDs and DVDs to make sure you have enough free space to hold the data.

ChessBase training CDs will typically contain two or three databases: an instructional database, a reference database (sometimes these two are combined), and a training database. If the subject of the CD is a chess opening, you'll usually find an opening book on the disk as well.

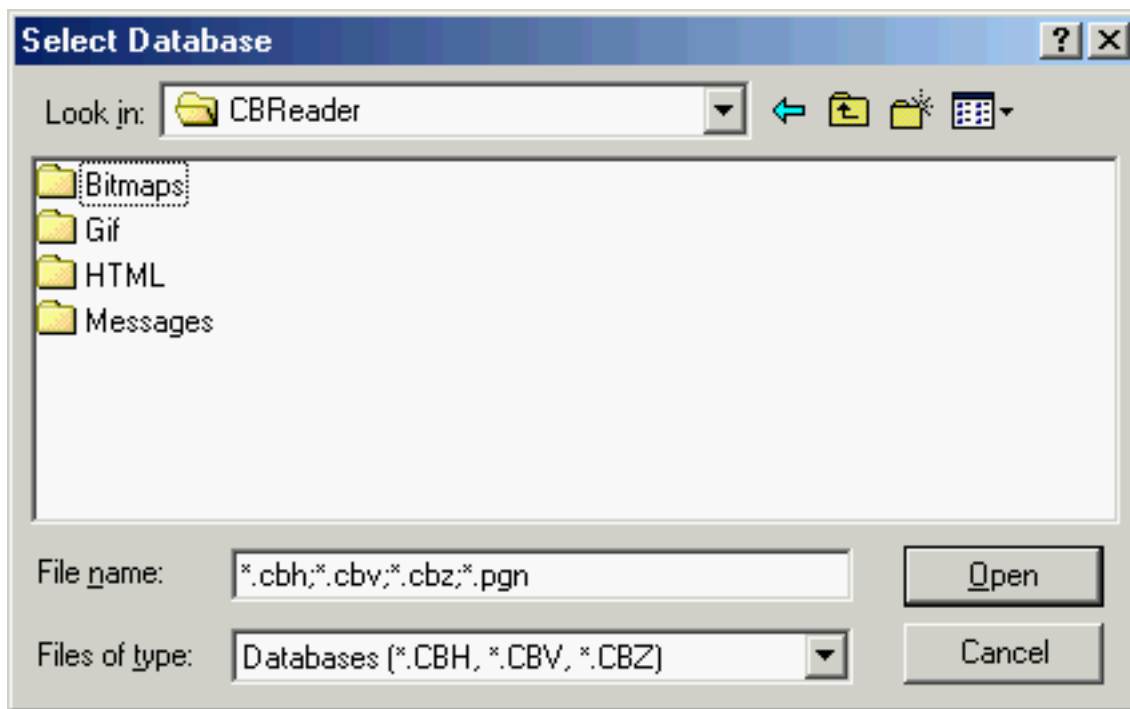
ChessBase training DVDs typically contain a single database (which is really just a "framing" device for the video instruction and animated games).

Again, please check the contents of the specific disk you've purchased as these contents will vary from product to product.

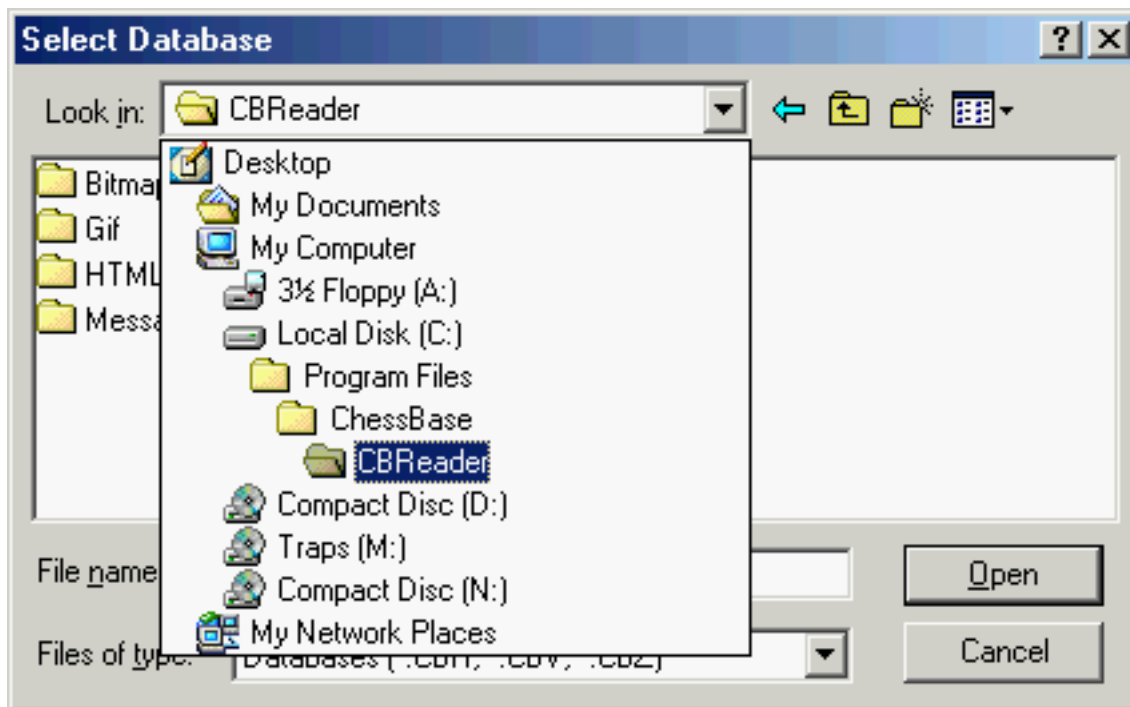
CHESSBASE READER INSTRUCTIONS

The latest version of *ChessBase Reader* doesn't include a function for automatically installing a database or opening tree to hard disk.

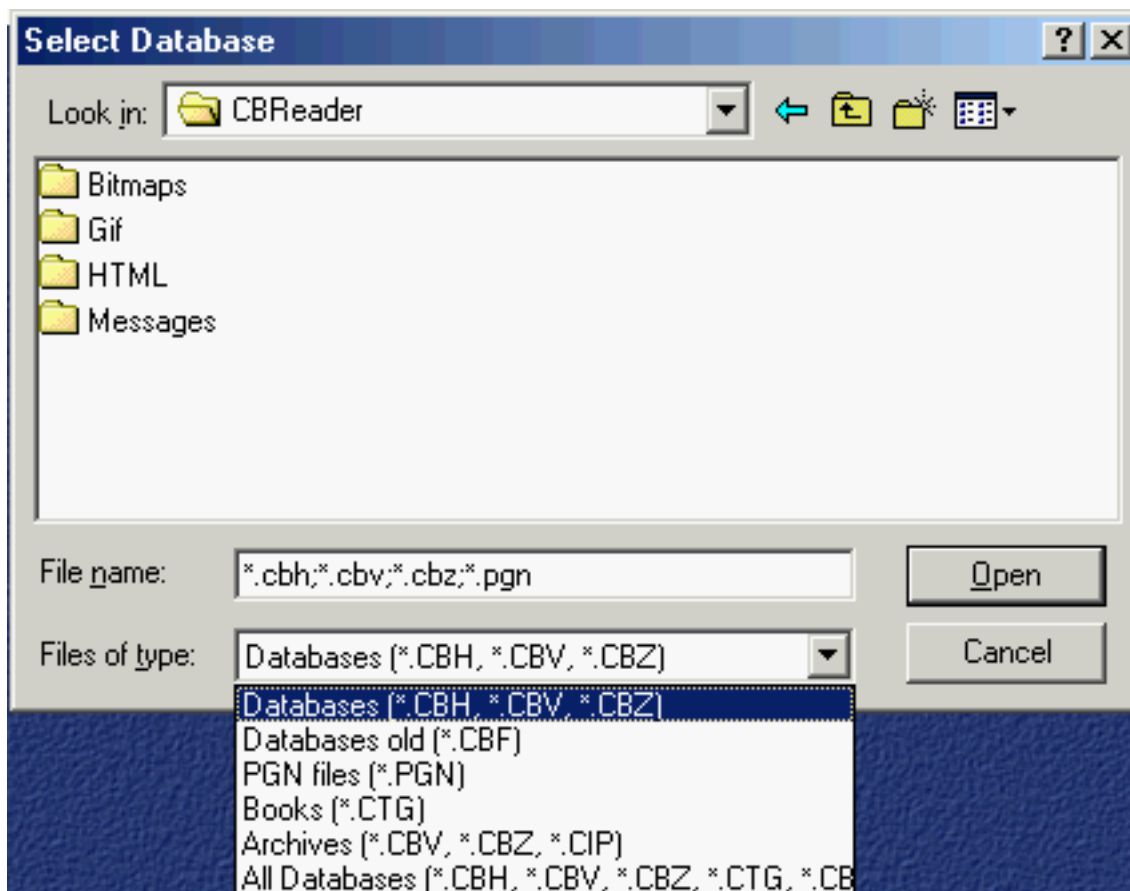
When you launch *ChessBase Reader*, you'll see a logo/illustration on the screen for a few moments, which will then be replaced by the *Windows* File Select dialogue:



You can use this dialogue to go to any drive on your computer by clicking on the pulldown menu:



Once you've navigated to the drive containing your new training disk, you can use another pulldown menu to access databases (in a variety of formats) as well as opening trees:



By using this procedure you can access the material directly from the CD or DVD. As stated there is no facility in *ChessBase Reader* for automatically copying databases/opening books to the hard drive. Users familiar with creating/copying files/folders can manually copy the necessary files to the hard drive if they so desire.

FRITZ INSTRUCTIONS

These instructions apply to *Fritz* as well as to all other chessplaying programs offered by ChessBase. Just substitute the name of the alternative program in place of the word "*Fritz*" in the following instructions.

To open a database:

1. Launch *Fritz*
2. In the splash panel, click "Play Fritz"
3. After the main chessboard screen appears, hit F12 on your keyboard (or click File/Open/Database from the Menu bar) to open the game list window
4. When the game list window appears, click File/Open/Database to display the *Windows File Select* dialogue (as shown above for *ChessBase Reader*); use this dialogue to navigate to the CD or DVD drive in which you've placed the training disk
5. Double-click on the name of the database you wish to open
6. The game list (or initial text screen) for that database will appear in the game list window

After you've opened the game list for a database, you can install it to your hard drive.

To install a database to the hard drive:

1. Go to the Tools menu (in the Menu bar above the game list), select "Database", and then "Install to hard disk" from the submenu
2. The *Windows* File Select dialogue will appear; this lets you choose a folder into which to install the database. The default folder selected by the program (which will typically be C:\My Documents\ChessBase\Bases\...) should be sufficient, although you may change this if you wish
3. After you've selected a folder and clicked "OK", you'll see a progress bar showing that the database is being installed. After the database has been installed to the hard drive, the *Fritz* program will automatically switch to the database on the hard disk.

To load an opening book:

1. Launch *Fritz*
2. In the splash panel, click "Play Fritz"
3. After the main chessboard screen appears, click File/Open/Opening book to display the *Windows* File Select dialogue (as shown above for *ChessBase Reader*); use this dialogue to navigate to the CD or DVD drive in which you've placed the training disk
4. Double-click on the name of the opening book you wish to use
5. The moves in the selected opening book will appear in the Notation pane (you may need to click on that pane's "Opening book" tab if the program doesn't make the switch automatically)

After you've loaded an opening book, you can install it to your hard drive.

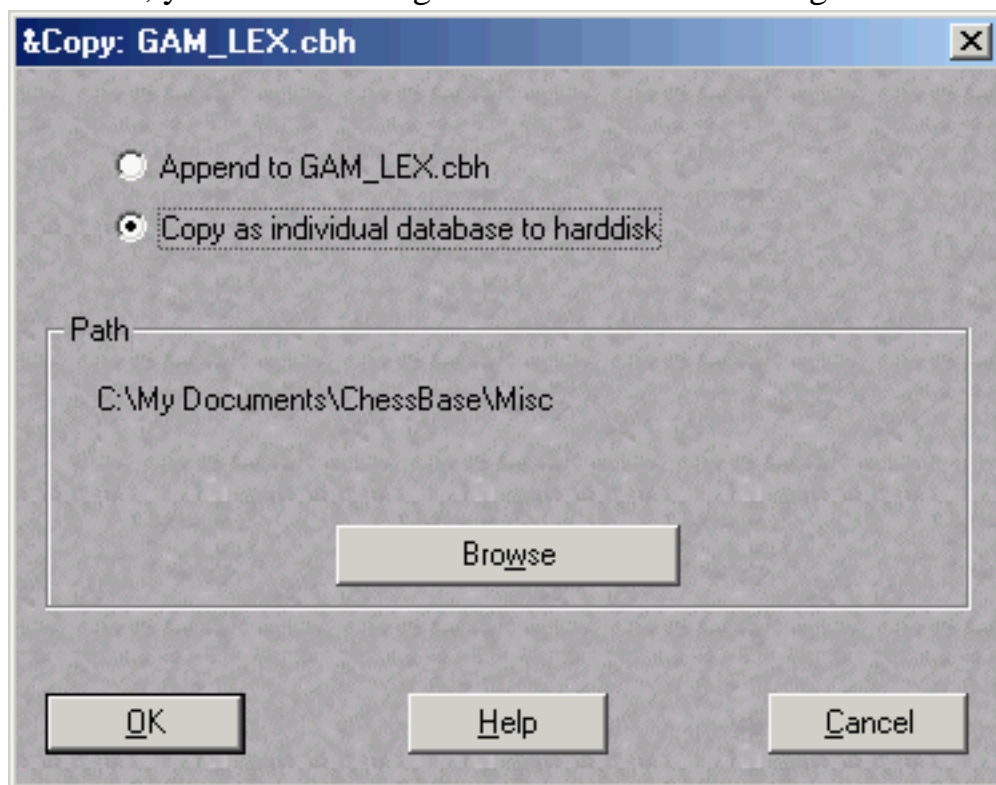
To install an opening book to the hard drive:

1. Go to the Edit menu (in the Menu bar above the chessboard), select "Opening book", and then "Copy tree to hard disk" from the submenu
2. The *Windows* File Select dialogue will appear; this lets you choose a folder into which to install the opening book. The default folder selected by the program (which will typically be C:\My Documents\ChessBase\Books\...) should be sufficient, although you may change this if you wish
3. After you've selected a folder and clicked "OK", you'll see a progress bar showing that the opening book is being installed. After the book has been installed to the hard drive, the *Fritz* program will automatically switch to the book on the hard disk.

CHESSBASE INSTRUCTIONS

The process of installing a database or opening book in *ChessBase* is a bit quicker than in *Fritz*: you don't have to open a game list or load an opening book first.

1. Insert your training disk into the proper drive on your computer
2. Launch *ChessBase*
3. After the program starts, click the plus sign to the left of "Drives" in the lefthand pane to expand the list of drives on your computer
4. Single-click on the proper drive letter for the drive into which you've inserted the training disk
5. All of the folders, databases, and opening books on the disk will appear as icons in the upper righthand-pane
6. Single-click on the icon for the database or opening book you wish to install
7. Go to the File menu (in the Menu bar), select "Install", and then "Install database" from the submenu; you'll see a dialogue similar to the following:



8. Make sure "Copy as individual database to hard disk" is selected; you may use the default folder displayed under "Path" to store the database or click the "Browse" button to select a different folder
9. Click "OK"; you'll see a progress bar displaying the database/book being installed
10. Repeat for each database or book you wish to install from the disk

© 2006, Steven A. Lopez. All rights reserved.

[\[ChessCafe Home Page\]](#) [\[Book Review\]](#) [\[Columnists\]](#)
[\[Endgame Study\]](#) [\[Skittles Room\]](#) [\[Archives\]](#)
[\[Links\]](#) [\[Online Bookstore\]](#) [\[About ChessCafe.com\]](#) [\[Contact Us\]](#)

Copyright 2006 CyberCafes, LLC. All Rights Reserved.

"**The Chess Cafe**®" is a registered trademark of Russell Enterprises, Inc.