



COLUMNISTS

ChessBase Cafe

Steve Lopez



Training Disks and *Fritz 10*, Part One

I am often asked about the use of various ChessBase training disks: the CDs and DVDs devoted to chess instruction. So the next two columns will try to dispel a few misconceptions and should clarify how to make the most of these worthy instructional resources.

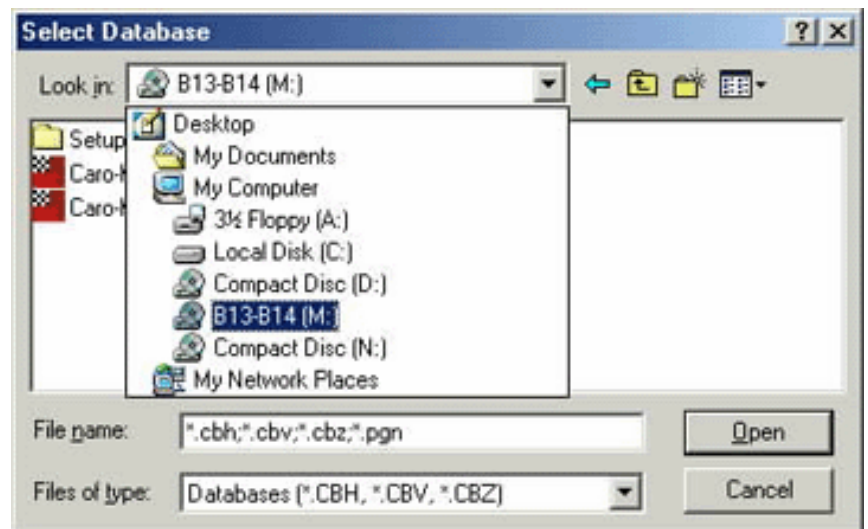
The most common misconception is that the user can toss a disk into their computer's drive and it will somehow "just run" on its own, similar to a DVD player connected to a television. Actually, the disks are meant to go together with some sort of "reader" program: *ChessBase Reader*, *ChessBase*, or any of the *Fritz* "family" of playing programs. (Although a select few of the DVDs can actually run on a DVD player, albeit in a European-zone data format, usually incompatible with US hardware.) The [ChessCafe ChessBase FAQ](#) page contains a [link](#) explaining the *ChessBase Reader* program, which is bundled with each of the CDs/DVDs.

Here I'll discuss using *Fritz10* as the "reader" software, focusing on the "old-style" instructional disks (primarily text-based on CD) this month and saving the "newer-style" video-based DVDs for the next column. The "old-style" text-based instructional disks were introduced about a decade ago and are still being produced – as of this writing the CDs *How to Play the Queen's Indian* and [Classical Sicilian B56-B59 2nd Edition](#) are two of latest offerings in this format. In this column, Zoran Petronijevic's [Caro-Kann](#) CD will be featured in the examples and illustrations.

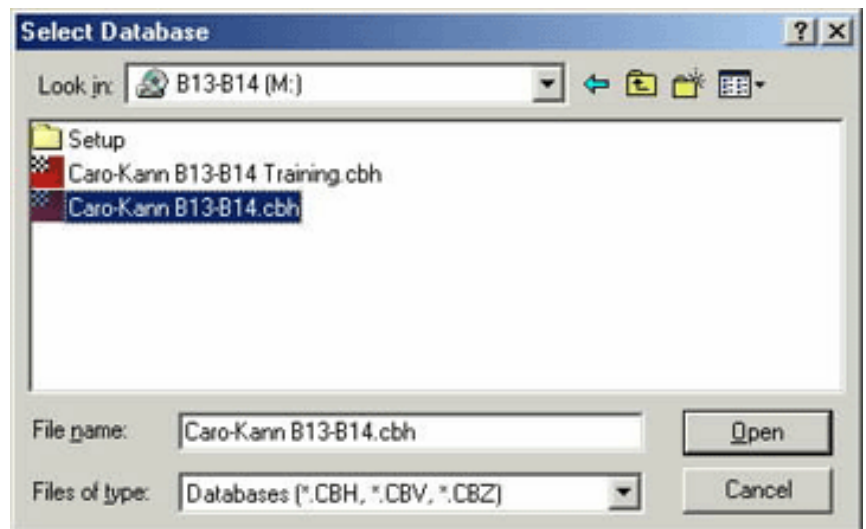
The easiest way to think of this type of instructional CD is as a book-on-disk. In essence, that's what it is and the authors have structured them along this model. But before you read it, of course, you have to be able to open it. Put the CD in your drive and when the popup window asks if you wish to "Install" or "Cancel," select "Cancel." Once you've cleared the popup, launch *Fritz10* and select "Play Fritz" from the program's splash screen.

When you see the main chessboard appear on your screen, press F12 on your keyboard to open the separate game list window (or go to the File menu, select "Open," and then "Database" from the submenu). After the game list window appears, go to the File menu in this new window, select "Open," and then "Database" from the submenu. You'll see the standard (and hopefully familiar) Windows File Select dialogue appear on your

screen, which you'll use to navigate to your CD drive:



There's no "hard and fast rule" that will apply to *all* the instructional CDs, as the various authors will structure their CDs in different manners. However, you will usually see at least two databases: one will be marked "Training," but you don't want to open that one yet. So double-click on the other choice:



On the *Caro-Kann* CD, we have two choices as shown above. After double-clicking on the main database (Caro-Kann B13-B14.cbh), a game list for this database will appear. This may take a few seconds on most machines, as the computer has to read the information from the CD. A portion of the list is shown below:



Note that game citation, Rathje-Roeder, is underlined. If you click on it, *Fritz10* will load the cited game from the database. This allows you to play through it just as you would any other database game:



And when you've finished playing through the game, you simply move your mouse cursor to the Windows Taskbar and click on the "Text" button to return to the chapter you were reading. In this way you'll work through the chapters without the fuss and bother of setting up a physical board and pieces, which would then have to be reset after each game or variation if you were using a mere book.

You'll also find a "Training" database on many of the instructional CDs. These are small databases that contain games with timed training questions that are designed to reinforce your knowledge of the main instructional material.

Training CDs devoted to a particular opening also usually contain a special opening book that can be loaded as *Fritz*' default book (using File/Open/ Openings book from the program's main chessboard screen), which forces *Fritz* to only play this one opening for either color. This is an incredibly useful training tool that helps you master the opening discussed on the disk.

There are, of course, further features that can be discussed; for example,

the opening book doubles as a statistical tool, but we'll stop here and let you explore some of these new territories on your own. The main point that I'm stressing is that these CDs are *interactive*. They require user input (clicking on a selected chapter, game link, etc.), they don't "just play" when you put them in your computer's drive tray.

Next month we'll discuss the ChessBase DVDs that offer video-based instruction utilizing the *Chess Media System*. Until then, have fun!

© 2007, Steven A. Lopez. All rights reserved.

All the ChessBase software described by Steve in this column, as well as many more ChessBase programs, are available in the [ChessCafe Online Catalog](#).

Steve wants your questions!! Send it along and perhaps it will be answered in an upcoming column. Please include your name and country of residence. [Yes, I have a question for Steve!](#)

 [TOP OF PAGE](#)

 [HOME](#)

 [COLUMNS](#)

 [LINKS](#)

 [ARCHIVES](#)

 [ABOUT THE CHESS CAFE](#)

[\[ChessCafe Home Page\]](#) [\[Book Review\]](#) [\[Columnists\]](#)

[\[Endgame Study\]](#) [\[The Skittles Room\]](#) [\[Archives\]](#)

[\[Links\]](#) [\[Online Bookstore\]](#) [\[About ChessCafe.com\]](#) [\[Contact Us\]](#)

Copyright 2007 CyberCafes, LLC. All Rights Reserved.

"**ChessCafe**®" is a registered trademark of Russell Enterprises, Inc.