



COLUMNISTS

ChessBase
Cafe

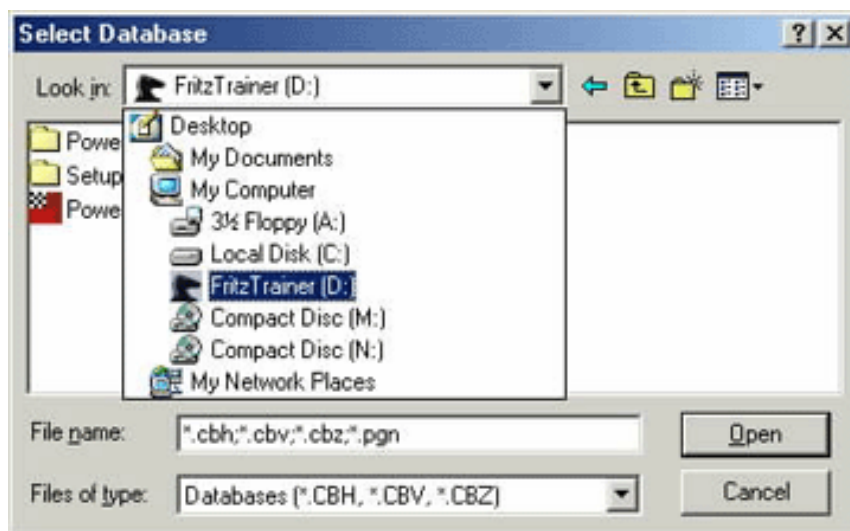
Steve Lopez



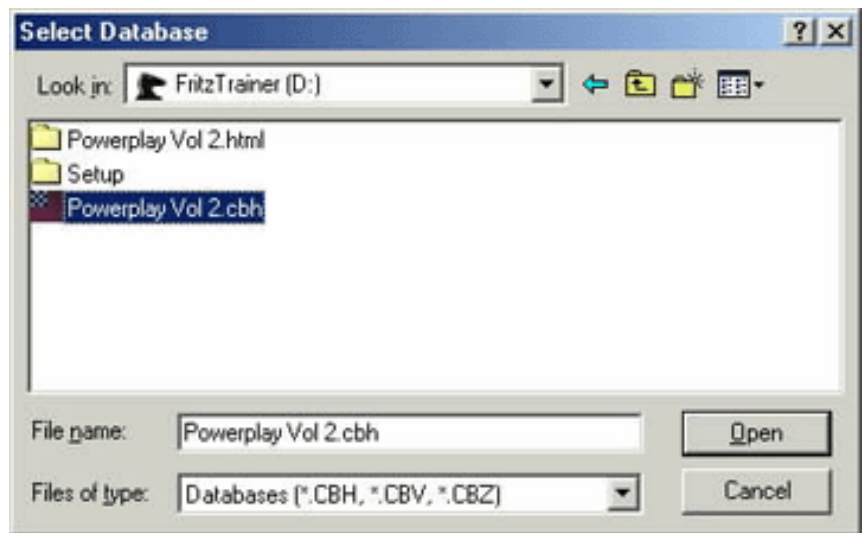
Training Disks and *Fritz 10*, Part Two

In last month's [column](#), we learned how to use "classic format" training CDs utilizing *Fritz 10* as our reader program. In this month's column, we'll turn our attention to the newer video-based Chess Media System DVDs, again using *Fritz 10* as our viewer. For this, we'll use Daniel King's [Power Play 2: Attacking the King](#) as our sample training DVD.

The first step, of course, is to put the DVD in your computer's disk drive. If the ChessBase Reader installation popup appears just cancel out of it. Launch *Fritz 10* and select "Play Fritz" when the splash screen appears. After you reach the main chessboard screen, press F12 on your keyboard to open the game list window. Go to the File menu in that window, select "Open," and then "Database" from the submenu. You'll see the standard (and hopefully familiar) Windows File Select dialogue on your screen; use this dialogue to navigate to your DVD drive:



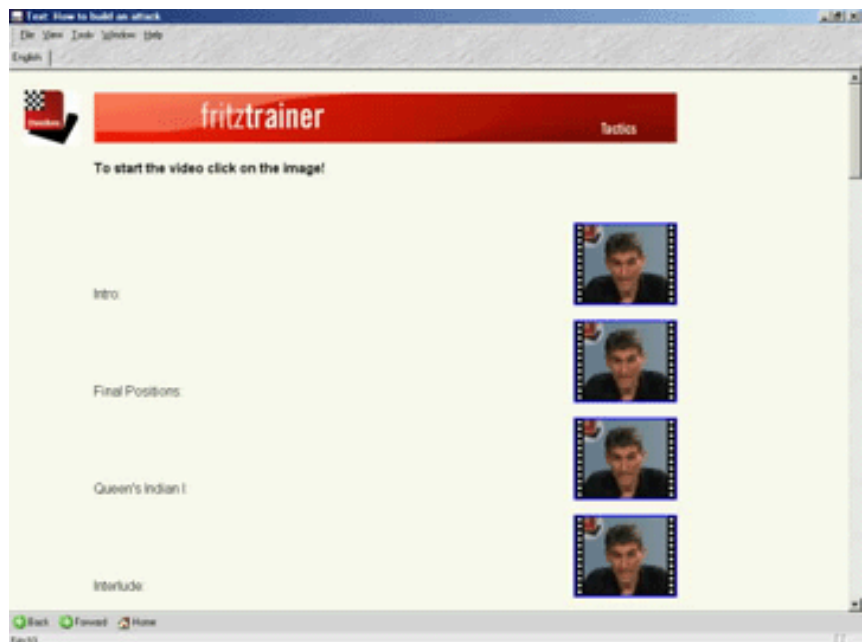
After you use the pull-down menu to select your DVD drive, you should see something resembling the following illustration (although the exact contents will vary from disk to disk, of course):



As you're probably already aware, database files end with the .cbh extension. Most instructional DVDs contain just one .cbh file, so double-click on it to get the game list for the database:



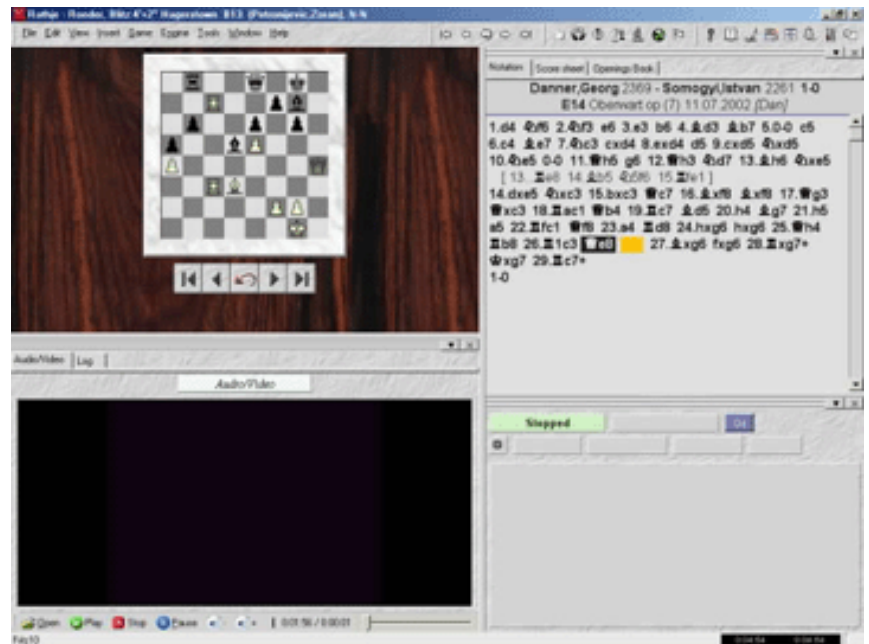
On this particular disk we see three entries, although most instructional DVDs have just a single entry. I cheated and skipped ahead, so I already know that "How to Build an Attack" is the proper choice to make here (unless we want the remainder of our instructional experience to be in German). Double-clicking on the selection brings us to the following screen (shown in reduced size below):



Here we see a list of chapters, along with a number of images of Daniel King. This is the part where a few users get hung up, asking "How do I get to the videos?" Well, at

least on this DVD, the answer is provided right on screen: “To start the video, click on the image.” So, if we wish to view the introduction video, we would *single-click* on the picture to the right of “Intro.”

This will return us to the main chessboard screen, where a game position will (usually) be loaded. We will also see an additional pane that will display the video content:



The black pane in the above illustration is the video pane (the video hasn’t started yet). All you generally need to do at this point is sit back and enjoy the show. The video pane generally contains just a “talking head” instructor. The chessboard on the screen acts as his wallboard, while the cursor in the notation pane displays the moves being discussed.

There are, however, some controls that you can utilize in the Chess Media System video pane. (I’ve blacked out the screen for purposes of copyright):



You’ll see two tabs at the top of the viewer. “Log” simply displays information such as the starting and stopping of a video. To view the video, select the “Audio/Video” tab.

There's a row of buttons and controls at the bottom of the viewer. The "Open" button allows you to open and run any video in .wmv format that resides on your computer, although (obviously) you won't see any activity on the chessboard if you're watching a clip you shot last summer at a backyard barbecue. Yet it certainly *is* possible to view *any* .wmv file in this pane.

When you single-click on a photo in the game list window to start a video, it will begin automatically as soon as it has loaded. There are three self-explanatory buttons in the viewer that control playback: "Pause," "Play," and "Stop." However, a few brief notes are in order. "Pause" simply suspends the video. The playback can be resumed either by clicking the "Pause" button a second time or by clicking the "Play" button. The "Stop" button stops the video completely; clicking "Play" afterward will *start the video over again from the beginning*.

Moving on, from left to right, there are two white volume buttons on the panel. The left button decreases the volume, while the right button increases it.

Next you'll notice a display showing two numbers separated by a slash. The figure to the left of the slash is the total running time of the current video (displayed as Hours: Minutes:Seconds). The number to the right of the slash is the current time of the video; you'll see this run just like a clock as the video plays.

Finally there is a slider at the far right of the panel. You can use this to move backwards and forwards within the current video. However, there is usually a delay involved after you reposition the slider – the chessboard will need a moment to correctly "reset" to the point you've selected in the video.

After the video is finished, you can select "Play" to view it again, or click the "X" button at the upper right corner of your screen to close that game and return to the game list window. Then you can select the next video on the DVD, if you so choose, simply by clicking on its corresponding photo.

Be aware that you probably won't finish a Chess Media System instructional disk in one sitting, as many of the DVDs of this type have a total running time between four and seven hours.

Until next month, have fun!

© 2007, Steven A. Lopez. All rights reserved.

All the ChessBase software described by Steve in this column, as well as many more ChessBase programs, are available in the [ChessCafe Online Catalog](#).

Steve wants your questions!! Send it along and perhaps it will be answered in an upcoming column. Please include your name and country of residence. [Yes, I have a question for Steve!](#)



[TOP OF PAGE](#)



[HOME](#)



[COLUMNS](#)



[LINKS](#)



[ARCHIVES](#)



[ABOUT THE
CHESS CAFE](#)

[\[ChessCafe Home Page\]](#) [\[Book Review\]](#) [\[Columnists\]](#)

[\[Endgame Study\]](#) [\[The Skittles Room\]](#) [\[Archives\]](#)

[\[Links\]](#) [\[Online Bookstore\]](#) [\[About ChessCafe.com\]](#) [\[Contact Us\]](#)

Copyright 2007 CyberCafes, LLC. All Rights Reserved.

"**ChessCafe.com**®" is a registered trademark of Russell Enterprises, Inc.