



## COLUMNISTS

### ChessBase Cafe

Steve Lopez



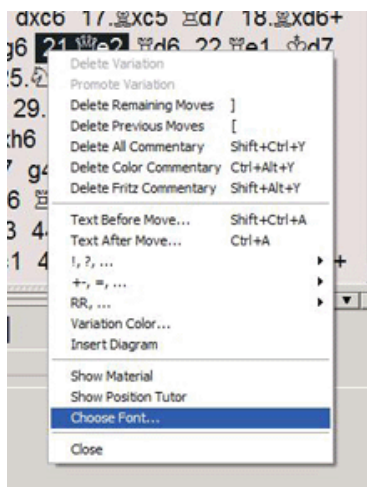
**CHESSTHEATRE**  
 Play through and download  
 the games from [ChessCafe.com](#) in the  
[DGT Game Viewer](#).

[The Complete  
DGT Product Line](#)

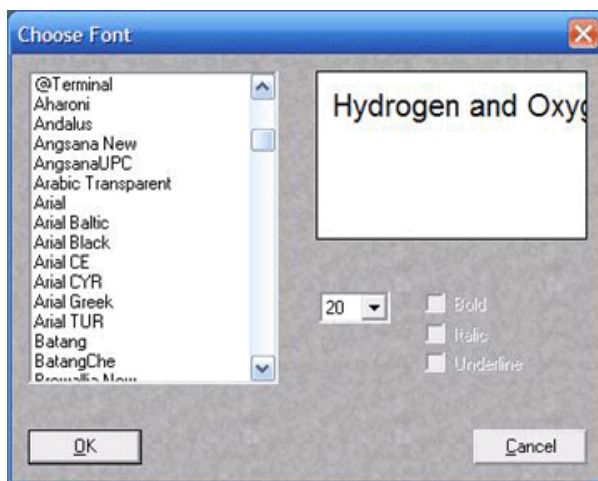
## Fonts in Fritz Part One

Several recent technical support requests have come in concerning the use of fonts in *Fritz11*. So we'll address this issue in two installments. The first column will help you correct a very annoying problem, on the rare occasions when it occurs, by describing what to do if the proper chess fonts aren't installed on your computer.

First, you should check to see if the chess fonts are indeed installed on your machine. Launch *Fritz11* and select "Play Fritz" in the program's splash screen. In the main screen of the program (the chessboard screen, where you play a game against the computer), right-click in the Notation pane (the place where the game's moves are displayed). A popup menu will appear, and you should click the "Choose font" command:

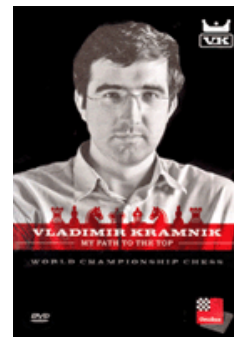


After you select this command, you'll see the following dialogue appear:



This dialogue contains a scrolling list of all the fonts that are installed on your computer. Scroll down to the fonts starting with the letter "F" and see if there are several fonts with the word "Figurine" displayed there:

Check out these  
 bestselling titles from  
[USCFSales.com](#):



[My Path to the  
Top \(DVD\)](#)

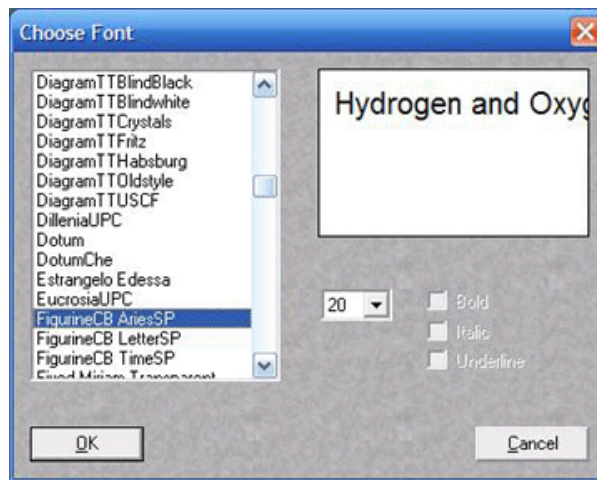
by Vladimir Kramnik



[How to Play the  
Najdorf, Vol. 3 \(DVD\)](#)  
 by Garry Kasparov



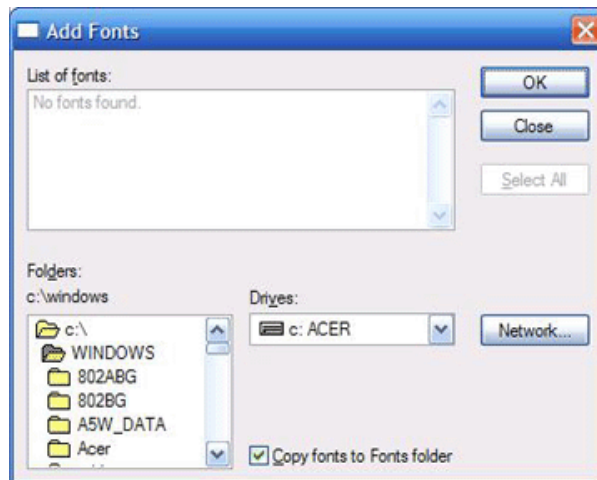
[ChessBase Magazine](#)



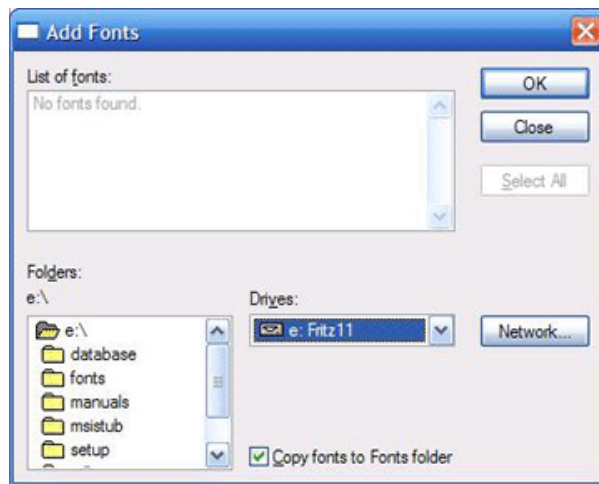
If you see these figurine fonts, all is well and you can skip the rest of this column (we'll discuss displaying the fonts next month). However, if you *don't* see these fonts listed, something's gone wrong with your *Fritz11* installation and you'll need to install the fonts manually. It's actually easy to do, as Windows does most of the work.

To manually install your *Fritz11* fonts, put your *Fritz11* disk in your computer's DVD drive. When the splash panel appears, click "Quit," but keep the DVD in the drive.

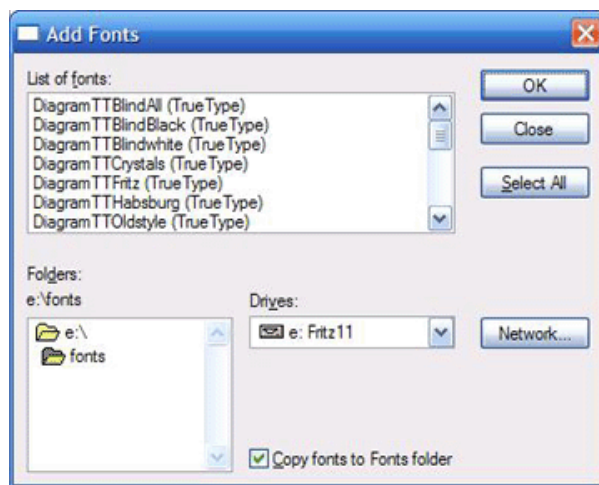
Next click your Windows "Start" button, and select "Control Panel." Then you'll double-click on the "Fonts" icon. This will bring up a display of all the fonts installed on your computer. Go to the File menu of this window and select "Install new font" to get the following dialogue:



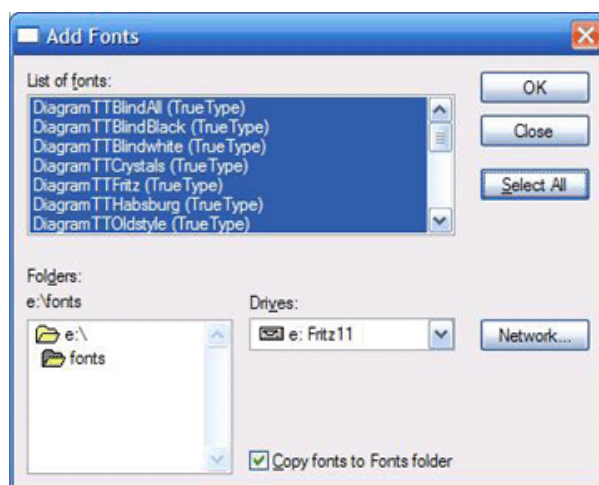
Under "Drives": you'll see a narrow window. Click in this window to get a pull-down menu displaying all the drives on your computer. Select your DVD drive:



Notice that the display in the window under “Folders”: has now changed to display all the folders on the *Fritz11* DVD. In this window, double-click on the folder called “Fonts”:



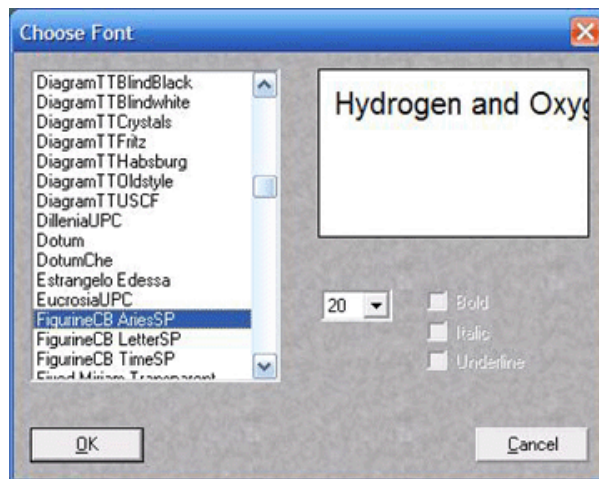
It will take a few moments, but the window under “List of fonts”: will become populated with a list of font names. Single-click on the first font listed, then click the “Select all” button to highlight the entire list:



This next step is very important: *be sure to check the box marked “Copy fonts to Fonts folder” if it’s not already checked* (see illustration above).

After making sure that box is checked, click “OK” to start the installation process, being sure to follow any prompts that you’re given. After the chess fonts are installed, you can confirm the installation by following the instructions at the beginning of this column (by using the “Choose font” command and checking the list to make sure the “Diagram” and “Figurine”

fonts are installed as shown below:



Next month we'll examine the on-screen use of fonts, as well as a special trick you'll need to know when cutting and pasting games into other documents.

Until next month, have fun!

---

© 2008, Steven A. Lopez. All rights reserved.

---

All the ChessBase software described by Steve in this column, as well as many more ChessBase programs, are available in the [USCF Sales Online Catalog](#).

---

***Steve wants your questions! Send one along and perhaps it will be answered in an upcoming column. Please include your name and country of residence.***

**[Yes, I have a question for Steve!](#)**

 [TOP OF PAGE](#)

 [HOME](#)

 [COLUMNS](#)

 [LINKS](#)

 [ARCHIVES](#)

 [ABOUT THE CHESS CAFE](#)

[\[ChessCafe Home Page\]](#) [\[Book Review\]](#) [\[Columnists\]](#)  
[\[Endgame Study\]](#) [\[The Skittles Room\]](#) [\[Archives\]](#)  
[\[Links\]](#) [\[Online Bookstore\]](#) [\[About ChessCafe.com\]](#) [\[Contact Us\]](#)

© 2008 CyberCafes, LLC. All Rights Reserved.  
"ChessCafe.com®" is a registered trademark of Russell Enterprises, Inc.