



## COLUMNISTS

### ChessBase Cafe

Steve Lopez



**CHESSTHEATRE**  
 Play through and download  
 the games from  
[ChessCafe.com](#) in the  
[DGT Game Viewer](#).

[The Complete  
 DGT Product Line](#)

## ChessBase 10's New Tree Format

I've been writing almost exclusively about Fritz in this column for most of the last three years. This was entirely intentional, as I know from past experience that most USCF members who own a ChessBase product are users of Fritz or one of its "sister" programs. However, with the advent of ChessBase 10, I think it is high time that we took a look at some of this program's many features.

I found the new features in ChessBase 10 quite useful and interesting, and one new display struck me as particularly so. Users of both ChessBase and Fritz are doubtless familiar with the tree display, in which a number of games are merged together into a statistical tree. (This also doubles as an opening book for the Fritz family of playing programs.)

Notation	Reference	Table	Training	Score sheet	Openings Book
		N	%	Av	Perf
Opening Tree.ctp	3042556	54.0	115	133	
1.e4	1540240	53.3	2195	2222	
1.d4	972903	54.9	2253	2279	
1.e3	241055	55.5	2282	2304	
1.c4	209419	54.8	2240	2262	
1.g3	22072	55.1	2295	2310	
1.f4	20725	48.3	2033	2050	
1.b3	12298	50.4	2174	2179	
1.e2	8496	52.1	2100	2132	
1.b4	7104	46.5	1967	1990	
1.e3	2524	43.9	2025	2004	
1.d3	1864	46.1	2108	2091	
1.a3	1322	47.0	2112	2098	
1.g4	986	47.6	2043	2028	
1.c3	836	46.2	2113	2109	
1.h3	228	44.5	2137	2146	
1.h4	191	52.1	2039	2056	
1.e2	125	45.6	1904	1956	
1.f3	74	44.6	2014	1951	
1.a4	60	50.0	1913	1839	
1.e4	36	55.6	2124	2141	

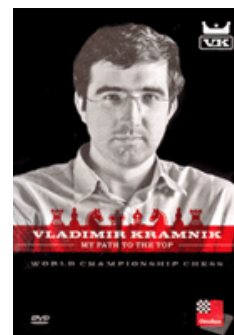
The illustration above shows the display for the opening book that accompanies the *ChessBase Opening Encyclopedia 2008*, set to show statistics for White's first moves. We can see statistical information for each of White's starting moves:

- the total number of database games in which the move was played ("N"),
- White's overall success rate for each move ("%"),
- the average Elo rating of the players making that move ("Av"),
- the player's performance rating, determined by the outcomes of individual games ("Perf").

By the way, it's interesting to note that all twenty of White's possible opening moves are represented in this tree.

Now let's step ahead by playing 1.e4 for White and see all of Black's replies from the database.

Check out these  
 bestselling titles from  
[USCFSales.com](#):




[My Path to the Top \(DVD\)](#)  
 by Vladimir Kramnik



[How to Play the  
 Queen's Gambit \(DVD\)](#)  
 by Garry Kasparov



[ChessBase Magazine](#)


Notation	Reference	Table	Training	Score sheet	Openings Book
		N	%	Av	Perf
Opening Tree.ctg	1540240	53.3	2198	2172	
1...c5	634692	50.9	2241	2220	
1...e5	358230	56.5	2121	2091	
1...e6	208844	54.2	2189	2168	
1...c6	107023	54.1	2203	2180	
1...d6	69366	55.1	2183	2152	
1...d5	56702	54.6	2089	2077	
1...g6	47711	51.9	2250	2210	
1...f6	40031	52.5	2207	2180	
1...c6	11534	53.2	2175	2151	
1...b6	4512	57.8	2083	2025	
1...a6	1122	55.5	2087	2068	
1...g5	184	65.8	1957	1905	
1...f5	65	71.5	1633	1589	
1...h6	55	58.2	1994	2010	
1...a5	53	64.2	1493	1672	
1...h6	49	64.3	1925	1768	
1...f6	42	70.2	2046	1946	
1...a6	26	32.7	2128	2201	
1...h5	26	73.1	1946	1830	
1...b5	23	63.0	1345	1649	

Here we see all of Black's replies, and it's again interesting to note that all twenty possible Black opening moves have been played in games from the *Opening Encyclopedia's* database, meaning that there are some really creative (or crazy) players out there! We again get statistics for all of the moves, including a few in half-tone down near the bottom, meaning that there aren't enough games containing those moves to get a reasonable statistical sampling relative to the frequency of the other moves listed.

Note that the numbers of the statistical percentages get *higher* as we go down the list of moves. This seems somewhat counter-intuitive; however, the percentages are always given from White's viewpoint – higher percentages mean a move is better for White, while lower numbers mean the move favors Black.

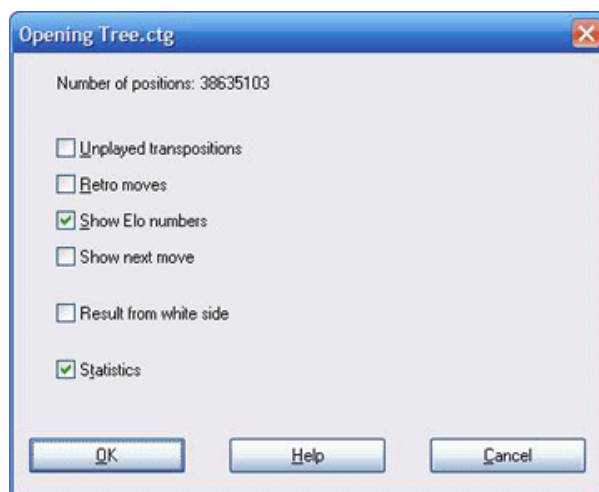
We can easily step through the tree to look at the moves and their statistics (and every move we make will appear on the on-screen chessboard, so the current position will always be displayed). But there are a couple of small flies in the ointment: one can't easily see the opponent's replies for all candidate moves at a glance (you won't see the replies until you actually select a candidate, so that the move is made on the chessboard), and the "success rating" percentages are always given from White's viewpoint.

ChessBase 10 addresses both of these concerns with some new features. Let's again look at Black's replies to 1.e4.

Notation	Reference	Table	Training	Score sheet	Openings Book
		N	%	Av	Perf
Opening Tree.ctg	1540240	46.7	2198	2172	
1...c5	634692	49.1	2241	2220	
1...e5	358230	43.5	2121	2091	
1...e6	208844	45.8	2189	2168	
1...c6	107023	45.9	2203	2180	
1...d6	69366	44.9	2183	2152	
1...d5	56702	45.4	2089	2077	
1...g6	47711	48.1	2250	2210	
1...f6	40031	47.5	2207	2180	
1...c6	11534	46.8	2175	2151	
1...b6	4512	42.2	2083	2025	
1...a6	1122	44.5	2087	2068	
1...g5	184	34.2	1957	1905	
1...f5	65	28.5	1633	1589	
1...h6	55	41.8	1994	2010	
1...a5	53	35.8	1493	1672	
1...h6	49	35.7	1925	1768	
1...f6	42	29.8	2046	1946	
1...a6	26	67.3	2128	2201	
1...h5	26	26.9	1946	1830	
1...b5	23	37.0	1345	1649	

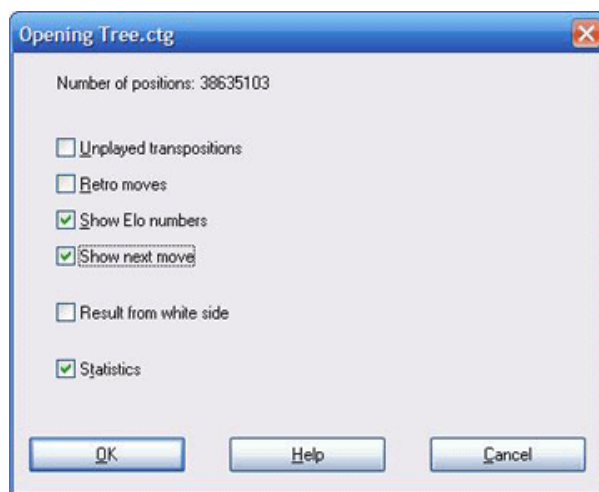
Do you notice the difference? Look at the percentages – they're now given from *Black's* point of view. However, if we step back one move, so that White candidates are shown, we'll see exactly the same numeric values as in the first illustration of this column. This is a new feature of ChessBase 10: you can configure the tree so that the "success rating" percentages are always given *from the point of view of the side to move*.

Here's how you do it – right-click in an empty spot near the bottom of the tree's pane and select "Properties" from the popup menu.



Notice the check box next to "Result from White side." If you check this box, you'll see the old-style display, in which lower percentages indicated a statistical advantage to Black. However, if you *uncheck* it, the same conditions apply to both players, e.g. higher numbers are "good," lower numbers are "bad."

While we're here, let's go back one move to 1.e4, select "Properties" again, leave "Result from White side" *unchecked*, and put a check in the box beside "Show next move."



Then click "OK" and have a look at what happens next:

Notation	Reference	Table	Training	Score sheet	Openings Book
Opening Tree.cdg					
	N	%	Av	Perf	
	3042556	54.0	115	133	
1.e4	1...c5	1...e5	1...e6	1...c6	
1540240 53.3%	634692 50.9%	358230 56.5%	208844 54.2%	107023 54.1%	
1.d4	1...c6	1...e5	1...e6	1...f5	
972903 54.9%	540244 53.8%	266630 57.5%	46828 55.4%	36165 55.0%	
1.e3	1...c6	1...e5	1...c5	1...g6	
241055 55.5%	108560 56.1%	61544 55.8%	27407 52.5%	14324 52.2%	
1.c4	1...c6	1...e5	1...e6	1...c5	
209419 54.8%	67793 55.6%	47063 54.0%	25430 55.1%	23684 56.3%	
1.g3	1...d5	1...c6	1...g6	1...e5	
22072 55.1%	7343 53.8%	4018 58.0%	3871 56.8%	3566 52.8%	
1.f4	1...d5	1...c6	1...e5	1...c5	
20725 48.3%	9681 47.9%	3265 46.1%	2242 50.1%	1853 45.4%	
1.b3	1...e5	1...d5	1...c6	1...c5	
12298 50.4%	5106 49.5%	3217 49.4%	2122 51.5%	654 51.8%	
1.e3	1...d5	1...c5	1...c6	1...e5	
8496 52.1%	3093 50.4%	1977 45.1%	1108 58.4%	972 61.9%	
1.b4	1...e5	1...d5	1...c6	1...e6	
7104 46.5%	2792 47.7%	1573 44.9%	922 45.5%	599 45.9%	
1.e3	1...e5	1...d5	1...c6	1...g6	
2524 43.9%	675 45.4%	597 42.6%	487 43.3%	305 38.5%	
1.d3	1...d5	1...e5	1...g6	1...c5	
1864 46.1%	829 47.3%	393 43.6%	192 39.3%	187 47.9%	
1.a3	1...d5	1...e5	1...g6	1...c6	
1322 47.0%	332 46.7%	321 48.3%	262 36.8%	236 49.8%	
1.g4	1...d5	1...e5	1...c5	1...d6	
986 47.6%	597 46.4%	239 50.4%	42 46.4%	39 37.2%	
1.c3	1...d5	1...c6	1...e5	1...c5	
836 46.2%	235 45.5%	226 44.9%	128 53.1%	89 47.8%	
1.h3	1...e5	1...d5	1...c5	1...c6	
228 44.5%	80 44.4%	67 43.3%	26 38.5%	14 39.3%	
1.b4	1...e5	1...d5	1...c6	1...c5	
191 52.1%	88 47.2%	60 54.2%	10 40.0%	10 70.0%	
1.e3	1...d5	1...e5	1...c6	1...g6	
125 45.6%	50 43.0%	34 47.1%	15 43.3%	7 42.9%	
1.f3	1...e5	1...d5	1...f5	1...c6	

Voila! We now see not only the candidate moves for White (listed in the leftmost column), but the most successful Black candidate replies listed to the right of each of White's possibilities. Each of the candidates in the table also show the total number of database games in which a move appeared, as well as the "success rating" percentage. For example, we see White's 1.e4 at the top of the leftmost column; Black's top replies to that move are listed from left to right in the same row, i.e., 1...c5, 1...e5, 1...e6, 1...c6. The same idea applies to each of White's other candidate moves in the display, with Black's top replies listed to the right in the same row. If you wish to see more candidates in the rows, just grab and drag the border between the tree pane and the chessboard to widen the pane.

Notation	Reference	Table	Training	Score sheet	Openings Book
Opening Tree.cdg					
	N	%	Av	Perf	
	3042556	54.0	115	133	
1.e4	1...c5	1...e5	1...e6	1...c6	
1540240 53.3%	634692 50.9%	358230 56.5%	208844 54.2%	107023 54.1%	
1.d4	1...c6	1...e5	1...e6	1...f5	
972903 54.9%	540244 53.8%	266630 57.5%	46828 55.4%	36165 55.0%	
1.e3	1...c6	1...e5	1...c5	1...g6	
241055 55.5%	108560 56.1%	61544 55.8%	27407 52.5%	14324 52.2%	
1.c4	1...c6	1...e5	1...e6	1...c5	
209419 54.8%	67793 55.6%	47063 54.0%	25430 55.1%	23684 56.3%	
1.g3	1...d5	1...c6	1...g6	1...e5	
22072 55.1%	7343 53.8%	4018 58.0%	3871 56.8%	3566 52.8%	
1.f4	1...d5	1...c6	1...e5	1...c5	
20725 48.3%	9681 47.9%	3265 46.1%	2242 50.1%	1853 45.4%	
1.b3	1...e5	1...d5	1...c6	1...c5	
12298 50.4%	5106 49.5%	3217 49.4%	2122 51.5%	654 51.8%	
1.e3	1...d5	1...c5	1...c6	1...e5	
8496 52.1%	3093 50.4%	1977 45.1%	1108 58.4%	972 61.9%	
1.b4	1...e5	1...d5	1...c6	1...e6	
7104 46.5%	2792 47.7%	1573 44.9%	922 45.5%	599 45.9%	
1.e3	1...e5	1...d5	1...c6	1...g6	
2524 43.9%	675 45.4%	597 42.6%	487 43.3%	305 38.5%	
1.d3	1...d5	1...e5	1...g6	1...c5	
1864 46.1%	829 47.3%	393 43.6%	192 39.3%	187 47.9%	
1.a3	1...d5	1...e5	1...g6	1...c6	
1322 47.0%	332 46.7%	321 48.3%	262 36.8%	236 49.8%	
1.g4	1...d5	1...e5	1...c5	1...d6	
986 47.6%	597 46.4%	239 50.4%	42 46.4%	39 37.2%	
1.c3	1...d5	1...c6	1...e5	1...c5	
836 46.2%	235 45.5%	226 44.9%	128 53.1%	89 47.8%	
1.h3	1...e5	1...d5	1...c5	1...c6	
228 44.5%	80 44.4%	67 43.3%	26 38.5%	14 39.3%	
1.b4	1...e5	1...d5	1...c6	1...c5	
191 52.1%	88 47.2%	60 54.2%	10 40.0%	10 70.0%	
1.e3	1...d5	1...e5	1...c6	1...g6	
125 45.6%	50 43.0%	34 47.1%	15 43.3%	7 42.9%	
1.f3	1...e5	1...d5	1...f5	1...c6	

Let's go ahead and make the move 1.e4 and see what happens to the display:

Notation	Reference	Table	Training	Score sheet	Openings Book
Opening Tree.cdg					
	N	%	Av	Perf	
	1540240	46.7	2198	2172	
1...c5	2.e3	2.c3	2.c4	2.d4	
634692 49.1%	472422 48.4%	70024 50.5%	50570 48.4%	12526 52.9%	
1...e5	2.e3	2.f4	2.c3	2.c4	
358230 43.5%	299032 43.5%	18746 42.7%	17266 43.6%	14724 43.9%	
1...e6	2.d4	2.d3	2.e3	2.c3	
208844 45.8%	179866 45.3%	15659 43.5%	8018 54.7%	3188 55.3%	
1...c6	2.d4	2.c4	2.c3	2.d3	
107023 45.9%	86275 45.5%	8085 40.8%	7466 46.6%	3801 44.6%	
1...d6	2.d4	2.e3	2.c3	2.f4	
69365 44.9%	69777 43.9%	7520 56.0%	7771 49.7%	1158 44.7%	

After a moment, we see Black's replies appear in the leftmost column, each of which is followed by the top four candidate replies for White; and, as we've just seen, the display can be widened to show more of these candidate replies. Note, too, that Black's percentages are provided from his point of view, since we left "Result from White side" unchecked in the "Properties" dialogue.

That leaves just one big question unanswered – how do you go back to the original display, since right-clicking on any of these table entries produces a different dialogue? Scroll down to the bottom of the table and you'll see a row of blank boxes:

42 29.8%	39 29.5%	9 44.4%	4 25.0%	2 0.0%
1...e6	2.g4	2...f3	2...c3	2.g3
26 67.3%	49 54.1%	7 64.3%	2 50.0%	1 0.0%
1...h5	2.g4	2...c3	2...f3	2...f3
26 26.9%	26 28.8%	4 0.0%	2 0.0%	1 0.0%
1...b5	2.g4	2...f3	2...b5	2.e5
23 37.0%	790 38.8%	153 42.2%	11 27.3%	1 100.0%

Right-click in any of these to get a popup menu and Select “Properties” from this menu, uncheck “Show next move” in the dialogue, and click “OK” – the display will return to the old format you’ve seen in previous versions of ChessBase and the Fritz family of playing programs.

Until next month, have fun!

---

All the software described in this column, as well as many more programs, are available in the [USCFSales Online Catalog](#).

---

**ChessBase Cafe** welcomes readers’ questions. Send one along and perhaps it will be answered in an upcoming column. Please include your name and country of residence.

*[Yes, I have a question for Steve!](#)*

---

© 2008 Steve Lopez. All Rights Reserved.

 [TOP OF PAGE](#)

 [HOME](#)

 [COLUMNS](#)

 [LINKS](#)

 [ARCHIVES](#)

 [ABOUT THE CHESS CAFE](#)

[\[ChessCafe Home Page\]](#) [\[Book Review\]](#) [\[Columnists\]](#)  
[\[Endgame Study\]](#) [\[The Skittles Room\]](#) [\[Archives\]](#)  
[\[Links\]](#) [\[Online Bookstore\]](#) [\[About ChessCafe.com\]](#) [\[Contact Us\]](#)

© 2008 CyberCafes, LLC. All Rights Reserved.  
**"ChessCafe.com"** is a registered trademark of Russell Enterprises, Inc.