



HOME

BOOK  
REVIEWSBULLETIN  
BOARDENDGAME  
STUDIESSKITTLES  
ROOMBOOKSTORE  
& EMPORIUM

ChessCafe.com



COLUMNISTS


**Chess Informant**  
Subscription Service

## A Preview of the Anthology of Chess Combinations, 3<sup>rd</sup> Edition

Ivan Markovic  
Chess Informant Deputy Editor-in-Chief

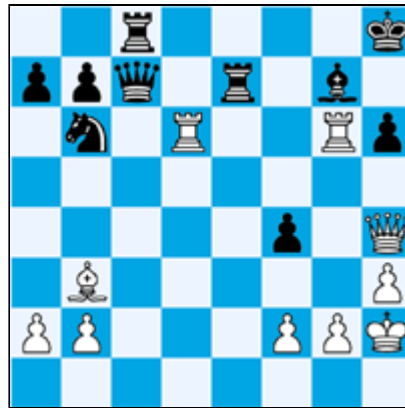
In response to popular demand, the third edition of the *Anthology of Chess Combinations* is expected to appear later this year, both in print and electronic form. The Chess Informant Editorial Board decided to introduce several major changes in the new edition. The main one being that it has been divided into two main parts. As a foundation for the first part, the previous edition of the Anthology, supplemented by numerous examples from the Informant's combinations section, has been used. The other part has been produced to incorporate the elements of a workbook. So far, recent examples have been added chronologically, without any classification. We make sure that the prospective solver cannot benefit from any hints.

While a substantial increase of the material would naturally be considered a good thing, the editors opted to omit a number of old examples for newer, more challenging ones. It bears a certain similarity to cooking – the ingredients have to be fairly balanced and meticulously selected; if they do not go together in the right proportions and quantities, it is highly unlikely that the blend will stand serious scrutiny over a long period. The big names are included, of course, but even more interesting are the lesser-known examples, as they produce an exemplary testimony to the depth of some extraordinary ideas that could otherwise have been left unnoticed. It is of utmost importance when you pick examples for the final selection to choose aesthetically pleasing ones, as a sense of delight will invariably put a smile on the faces of the solvers.

It is always a tad unfair to single out any of the examples, but it's even worse to exclude them, so we have chosen our six unanimous favorites derived from grandmaster annotations as they had originally appeared in the Informant's feature article.

1. **I. GLEK 2590** —  
**J. VAN MIL 2416**  
*Belgium 2001*  
— 83/89\*

2. **J. LAUTIER 2687** -  
**A. GRISCHUK 2671**  
*Wijk aan Zee 2002*  
— 83/402\*



1. ?

+/-



1... ?

3. T. RADJABOV 2533 —  
N. DE FIRMIAN 2545  
*Malmoe 2001*  
— 83/536\*



1. ?

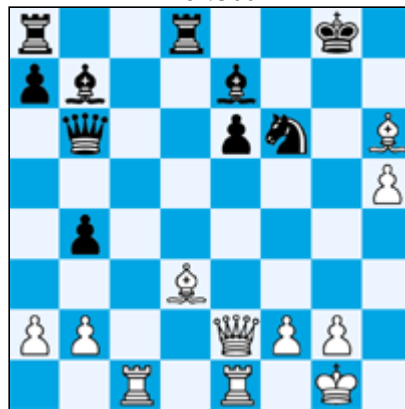
+/-

4. A. ABREU 2480 —  
S. DEL RIO ANGELIS 2480  
*La Habana II 2002*  
— 84/180\*



1. ?

5. V. MILOV 2595 —  
P. VARGA 2484  
*France 2002*  
— 84/366\*



1. ?

+/-

6. G. KACHEISHVILI 2605 —  
I. GLEK 2605  
*Chicago 2002*  
— 85/37\*



1... ?

Answers:



**6. G. KACHEISHVILI — I. GLEK**

**1...Nf3!! 2. gf3** [2. Bf3 Rc3! 3. Kc3 Rc8 4. Kd3 (RR 4. Kb3 Qd4 5. Bb7 Qb Rc5 7. Qb3 Ra5 8. Kb2 Qf2 9. Kc3 Qe3 10. Kb2 Qd4 11. Qc3 Rb5 12. Kc2 , Qc5 Qc5 14. Kb3 Qb6 15. Kc2 Qb7 16. Rad1 Qe4 17. Kc1 Qe3 18. Kbl Qb Qf2 and Black is winning, with the idea a5-a4-a3) Ba6 5. Ke4 Rc4 6. Qe5 f Qe5 8. Kc4 Ba6 9. Kb3 Qd4 and Black is superior] **Rc3! 3. Kc3 Rc8 4. Kd. Bd5 5. Rgd1 Rc4 6. Kd2 Rd4 7. Ke1 Rf4 8. Rac1 Bc4 and Black is superior Ke4 Re8 6. Kd5 Re5! 7. Qe5 Bb7 8. Kc4 Qe5 9. Rge1 Ba6 10. Kc3 Qc5 1 Qd4 12. Ba6 Qb6 13. Kc3 Qa6** (and Black is superior) [I. Glek]



[\[ChessCafecom Home Page\]](#)
[\[Book Review\]](#)
[\[Bulletin Board\]](#)
[\[Columnists\]](#)  
[\[Endgame Study\]](#)
[\[The Skittles Room\]](#)
[\[Archives\]](#)  
[\[Links\]](#)
[\[Online Bookstore\]](#)
[\[About ChessCafecom\]](#)
[\[Contact Us\]](#)

Copyright 2004 Russell Enterprises, Inc All Rights Reserved

"The Chess Cafe®" is a registered trademark of Russell Enterprises, Inc