



HOME

BOOK  
REVIEWSBULLETIN  
BOARDENDGAME  
STUDIESSKITTLES  
ROOMBOOKSTORE  
& EMPORIUM

ChessCafe.com



COLUMNISTS


**Chess Informant**  
Subscription Service

## B12: Caro-Kann Defense, The Advance Variation

Sasa Velickovic  
Chess Informant Editor

The Chess Informant Editorial Board has decided to do an encore, after a gap of ten years from Seirawan's outstanding work on the first edition of the B12 Monograph. The new CD offers detailed up-to-date coverage of the Advance Variation of the Caro-Kann without unnecessary overlaps with the previous edition.

The instructive examples given in the "Test Your Skills" section of the monograph are given in addition to the material presented in the ECO tables and the complementary reference databases. The 99 instructive positions are no means exhaustive or all-encompassing, as they mainly focus on the typical patterns from top level practice, without any intended categorization.

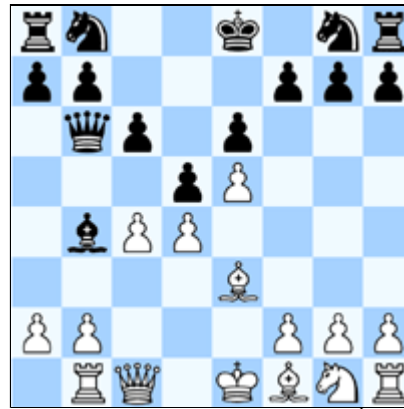
Rather than having a calming effect on the already unbalanced positions, many of the examples seem to favor moves which put out the fire with gasoline. Therefore, the strategic maxim of the Advance Variation of the Caro-Kann Defense could probably be described as – any waiting strategy can hardly be recommended. However, that does not rule out positional resources since the intermingling of subtle moves is quite typical of modern combinative play.

Given enough time, it is quite likely that an entirely new monograph would be necessary just to accommodate all the fresh ideas and re-evaluations, as well as the inadequacies in current analyses. All things considered, another purpose of the instructive examples section might be to offer guidelines that could serve as a basis for the readers' further independent research.

We shall confine ourselves to these short remarks for the time being; all else should hopefully become clear by the examples themselves, and their intrinsic didactic value. A sample of nine positions is offered in this article. Further clarifications of the presented ideas can be found by the interested reader in the main section of the monograph, where all the lines are treated with particular care and analyzed to a much greater extent.

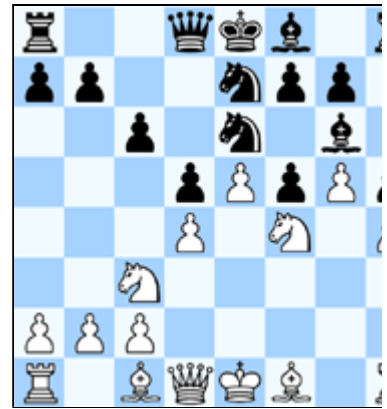
1.

2.



1. ?

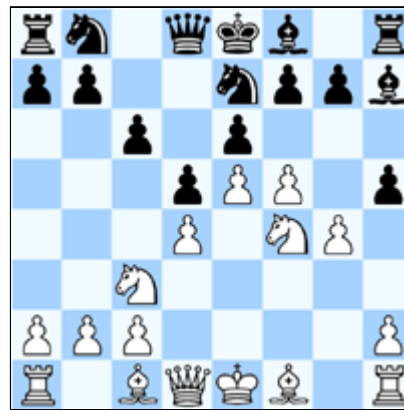
±



1. ?

±

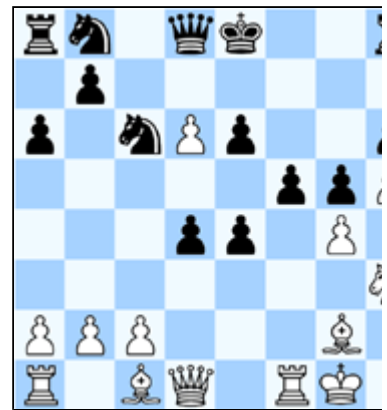
3.



1... ?

∞

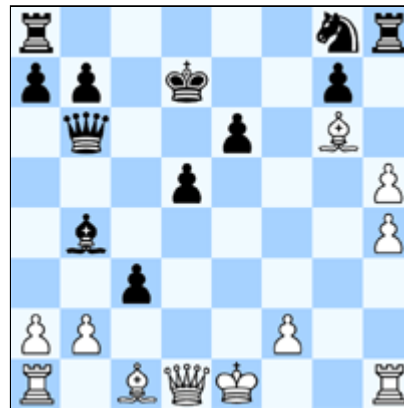
4.



1... ?

=

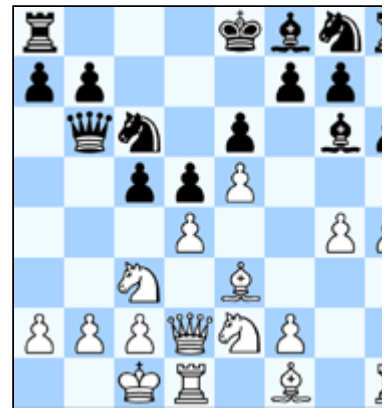
5.



1. ?

∞

6.

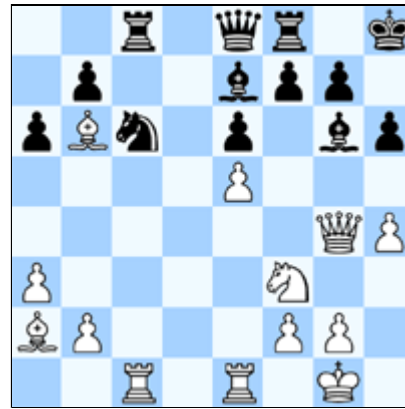


1... ?

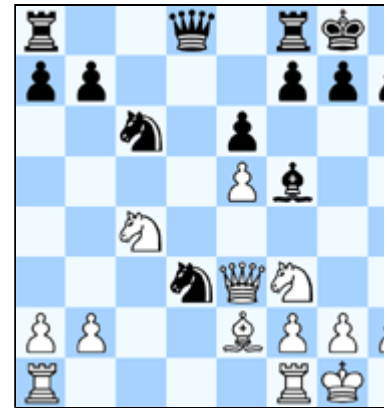
=

7.

8.

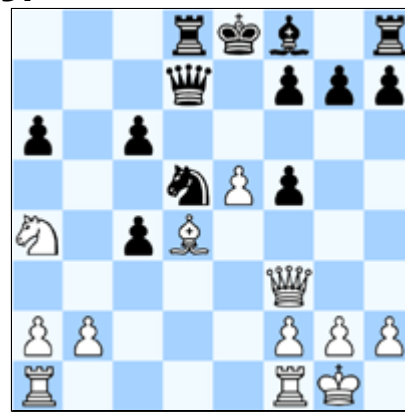


1... ?



1... ?

9.



1... ?

**Answers:****1.**

1. Kd1! dc4 2. Nf3! Nd7 3. a3 Be7 4. Be4 and White is slightly better;  
Kasparov – Jobava, Rethymnon 2003 see 88/66

**2.**

1. Nce2! Qd7 2. Bh3 0-0-0 3. 0-0 Kb8 4. Be3! Nc8 5. a4! and White is  
superior; Nataf – M. Grabarczyk, Hasselbacken 2001 see 82/107

**3.**

1...Nf5! 2. gf5 Qh4 3. Ke2 Bf5 4. h3 c5! 5. Nb5 Nc6 6. c3 Qd8! 7. Be3 a6  
Nd6 Bd6 9. ed6 Qd6! 10. dc5 Qe5 11. Nd3 Bd3! 12. Qd3 0-0-0 unclear;  
Sutovsky – Nielsen, Bled 2002 see 86/82

**4.**

1...0-0! 2. gf5 ef5 3. Be4!? fe4 4. Bg5! Rf1 5. Qf1 hg5 6. Qf5! Qd7! 7. Qg  
Qg7 8. Qe8 Qf8 9. Qg6 Qg7 equal; Nataf – Solozhenkin, France 1999 see  
75/105

**5.**

1. 0-0 Ne7 2. Qa4 Kc7 3. Bf4 Bd6 4. Rac1 unclear; Fedorov – Stohl, Hrvat  
2002 see 85/81

**6.**

**1...h5! 2. dc5 Bc5 3. Bc5 Qc5 4. Nf4 Nge7** equal; A. Sokolov – Karpov, Linares 1987 see 43/157

**7.**

**1...Nb8!** equal; Kamsky – Karpov, Groningen 1995 see 65/120

**8.**

**1...Qd5! 2. Nd6 Nde5 3. Rfd1 Nf3 4. Bf3 Qe5 5. Qe5 Ne5 6. Bb7 Rab8 7. Rd2 Nc4 8. Nc4 Rb7** equal; Ivanchuk – Karpov, Monaco (rapid) 1998 see 7 (120)

**9.**

**1...c5! 2. Nc5 Qb5 3. a4! Qb4 4. e6! Bc5 5. Bg7 Rg8 6. ef7 Kf7 7. Bc3! Nc Qf5 Kg7 9. Qg5 Kf7** equal; Gelfand – Karpov, Sanghi Nagar 1995 see 63/1



[\[ChessCafecom Home Page\]](#) [\[Book Review\]](#) [\[Bulletin Board\]](#) [\[Columnists\]](#)  
[\[Endgame Study\]](#) [\[The Skittles Room\]](#) [\[Archives\]](#)  
[\[Links\]](#) [\[Online Bookstore\]](#) [\[About ChessCafecom\]](#) [\[Contact Us\]](#)

Copyright 2004 Russell Enterprises, Inc All Rights Reserved

"The Chess Cafe®" is a registered trademark of Russell Enterprises, Inc