



ChessCafe.com



COLUMNISTS

**Chess Informant**  
Subscription Service

## Liviu-Dieter Nisipeanu Annotates

Ivan Markovic

Chess Informant Deputy Editor-in-Chief

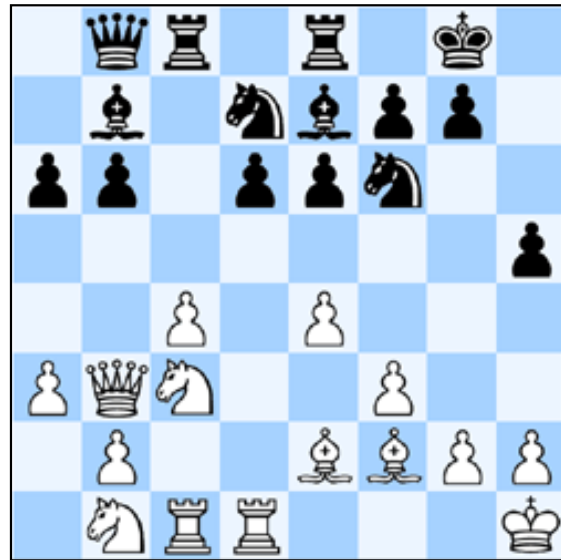
One of the most striking aspects of Liviu-Dieter Nisipeanu's chess career is that, apart from reaching the semifinals of the FIDE World Knockout Championships in Las Vegas in 1999, he had practically no experience within the confined circle of the chess elite. It is amazing that a 2700-caliber player is still something of a dark horse to the wider chess community. His most recent effort in Pune, India, was his first decent top-level round-robin tournament in years. As an Elo-favorite he lived up to expectations and in his wins over Sutovsky and Sandipan he convincingly demonstrated the skills of a super-Grandmaster.

While Nisipeanu's theoretical preferences are not likely to be adopted by a multitude of players, that does not mean that his home preparation is deficient. In a rather obscure line of the Vienna Game, reached by transposition, his powerful novelty refuted White's opening play to such an extent that Sutovsky ought to have been content with a draw, despite being a pawn ahead. Nisipeanu's annotations suggest that Sutovsky's best chance was to return the pawn, because holding on to it only brought him a position where he was soon desperately fighting for a draw. The verdict is that the line employed by White will most likely disappear from grandmaster practice.

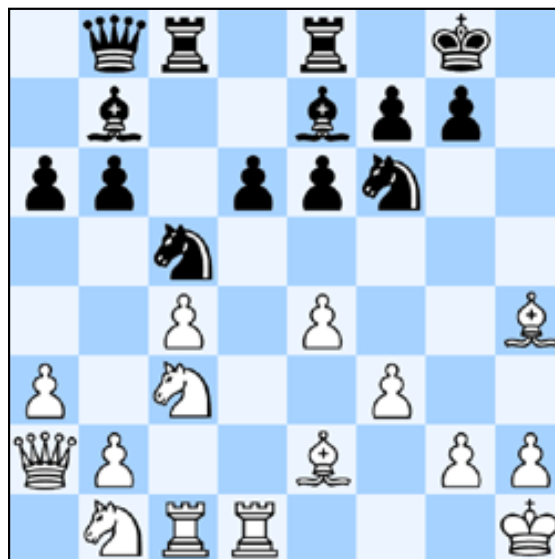
In the second game, Nisipeanu, again with the black pieces, showed his outstanding capability of stirring up positionally justified complications by means of a pawn sacrifice. In a seemingly innocuous Hedgehog battle, Black unexpectedly advanced his h-pawn instead of employing the well-known maneuver Qb8, Bd8-c7, Kh8, Rg8 which is aimed at supporting Black's kingside pawn thrust. Sandipan accepted the challenge and captured the pawn, assessing the ensuing complications as favorable for White. However, Nisipeanu had calculated further, correctly predicting that White's misplaced pieces on the queenside would not be able to prevent the infiltration of Black's major pieces. Nisipeanu's use of the initiative was overwhelming as he ingeniously created a series of tactical threats. It is obvious that Nisipeanu's preparation is both fertile and imaginative and that it paves the way for enterprising middlegame concepts. He is definitely a player to watch in 2005 as he receives more invitations and the organizers finally offer him a long-deserved chance at chess stardom.

**Sandipan 2555 – Nisipeanu 2686**  
**Pune 2004**

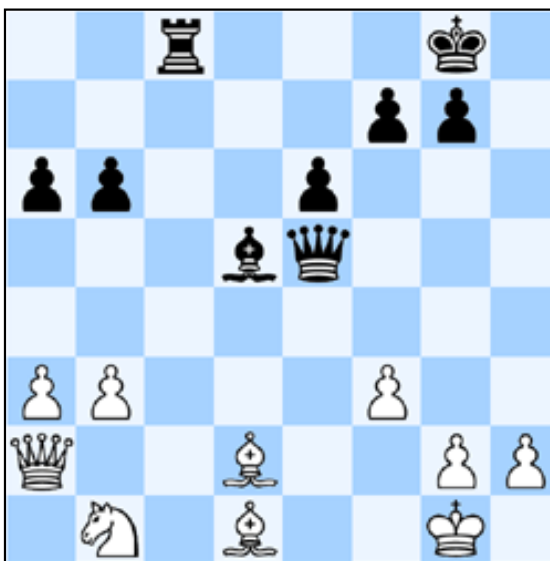
**1. e4 c5 2. Nf3 e6 3. d4 cd4 4. Nd4 Nc6 5. Nb5 d6 6. c4 Nf6 7. N1c3 a6 8. Na3 b6 9. Be2 Bb7 10. Be3 Be7 11. 0-0 Ne5 12. f3 0-0 13. Qb3** [Editorial comment: 13. Qd2 d5 14. ed5 ed5 15. cd5 Bd5 16. f4 Nc6 17. Rad1 Nb4 18. Nd5 Nfd5! (*a novelty*; 18...Nbd5 *see* 89/(140)) 19. Bd4 Qc7 20. Be5 Qc5 21. Bd4 Qc7 22. Be5 Qc5 23. Bd4 ½ : ½ Y. Shabanov 2429 – Shestoperov 2448, Satka 2004] **Ned7 14. Rfd1 Qc7 15. Rac1 Rac8 16. Kh1 Rfe8** [16...Qb8!? 17. Rd2 Bd8 with the idea Bc7, Kh8, Rg8, g5] **17. Nab1** [17. Bf1 h6 (17...Nc5 18. Qc2 Qb8 19. Qf2 and White is slightly better; 17...Kh8 18. Ne2 Rg8 19. Bd4 g5 20. g4 h5 21. h3 Kg7 22. Qe3 and White is slightly better) 18. Bg1 Kh8 19. Ne2 Qb8 20. Nc2 Bd8 21. Nc3 Nc5 22. Qa3 Be7 23. b4 Ncd7 24. Qb3 and White is slightly better] **h5** [*a novelty*; 17...Nc5 18. Qc2 d5 (18...Qb8 19. Qd2 d5 20. cd5 ed5 21. Bf4 Bd6 22. Bd6 Qd6 23. Nd5 Nd5 24. ed5 Qd5 equal) 19. cd5 ed5 20. ed5 Bd6 21. Bg5 (21. Qd2 *see* 24/343; 21. Bd4 Qe7) Ncd7 unclear] **18. a3** [18. Nd2 *a*) 18...d5 19. cd5 ed5 20. ed5 Nc5 (20...b5?! 21. Nde4 and White is superior) 21. Bc5 (21. Qc2 Nd5 22. Nd5 Bd5 23. Qf5 Rcd8 equal) Qc5 22. Nde4 Qe3 23. Re1 Ne4 (23...Nd5? 24. Ba6 and White is winning) 24. fe4 Bd6 with compensation; *b*) 18...h4 19. Bf1 Bd8 unclear] **Qb8 19. Bf2** [better is 19. Bg1 h4 20. Qa2?! h3 21. g3 Qa8 22. Nd2 d5 and Black is superior; 20. Bf1 with the idea 20...h3 21. g3 Ne5 22. Nd2 d5 23. cd5 ed5 24. Bh3 Nd3 (24...de4? 25. Bc8 ef3 26. Bb7 Qb7 27. Qb6 and White is winning) 25. Ra1 Rcd8 26. Nd5 Nd5 27. Qd3 Nf4 28. Qf1 Nh3 29. Qh3 Bg5 30. Qg2 (only move) Bd2 31. Rd2 Rd2 32. Qd2 Re4 with compensation]



**19...h4! 20. Bh4** [20. Bf1 Ne5 (20...Nh5 21. Be3 g5 22. Qc2) 21. Na4 (21. Bh4 Nfg4 with initiative) *a*) 21...b5 22. cb5 Rc1 23. Rc1 ab5 (23...h3 24. ba6) 24. Bb5; *b*) 21...h3 22. Nb6 Rcd8 23. Bd4! Nc6 (23...d5?! 24. cd5 ed5 25. f4 Neg4 26. e5 Ne4 27. Qf3 and White is superior) 24. Be3 Ne5; *c*) 21...Bc6!? 22. Nb6 Rc7 with compensation] **Nc5 21. Qa2**



**21...Nfe4! 22. Ne4** [22. Be1 Nf6 with the idea d5 and Black is slightly better] **Ne4 23. Be7 Nf2 24. Kg1 Nd1 25. Bg5** (only move) **d5 26. Bd1** [26. b4 Qe5 27. Qd2 Nb2 28. f4 Qe4 29. Qb2 dc4 and Black is superior; better is 26. b3 Qe5 27. Qd2 Nb2! (27...dc4 28. Bd1 cb3 29. Bb3 unclear) 28. Be3 dc4 29. Bd4 Qd5 30. Qb2 cb3 and Black is slightly better] **Qe5 27. Bd2** (only move) **dc4** (and Black is superior) **28. Rc4** [28. Kf2 Qh2 with the idea 29. Rc4 Bd5 30. Rc8 Rc8 31. b3 Qh4 32. Kg1 Qd4 33. Kf1 Rc1 and Black is winning; 28. Bc2 Qd4 29. Kh1 (29. Kf1 Bd5 and Black is superior) Qf2 and Black is superior] **Bd5 29. Rc8** [better is 29. b3 Bc4 30. bc4 Red8 and Black is superior] **Rc8 30. b3**

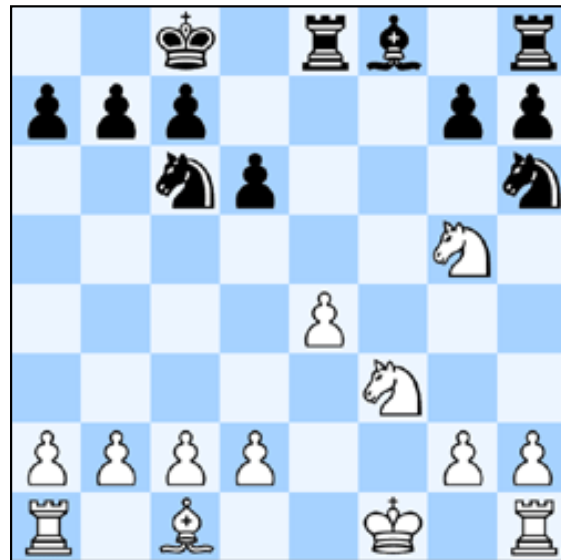


**30...Rc1!** (and Black is winning) **31. Nc3 Qd4 32. Kf1 Bb3 33. Qb3 Qd2 34. Qb6 Rc3 0 : 1** [Nisipeanu, Stoica]

## Sutovsky 2679 – Nisipeanu 2686 Pune 2004

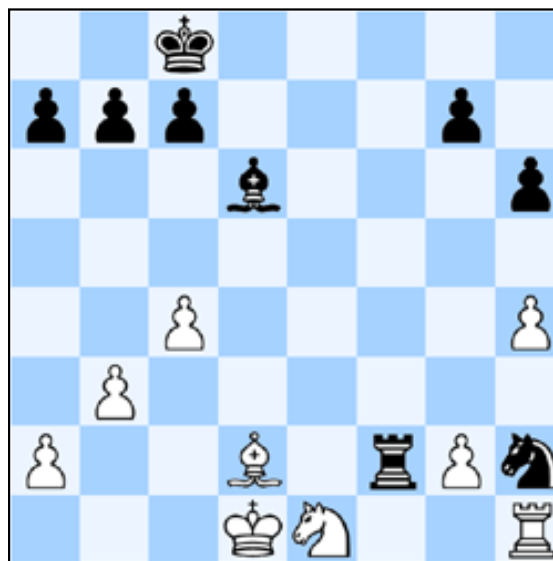
**1. e4 d6 2. Nc3 e5 3. f4 ef4 4. Bc4** [4. Nf3 g5 unclear] **Qh4** [4...Be6!? 5. Be6 Qh4 (5...fe6 see 46/392) 6. g3 fg3 7. Bf7 Kf7 (7...Kd8? 8. Kf1! and White is

winning) 8. Qf3 Nf6 9. hg3 Qg4] **5. Kf1 Be6** [5...Bg4!? 6. Nf3 Bf3 7. Qf3 Nc6 unclear] **6. Qe2** [6. Bb3 g5 unclear; 6. Nd5 Qd8! 7. Qe2 Nc6 (7...c6 8. Nf4 Bc4 9. Qc4 Qf6 10. d4 g5 11. e5 de5 12. de5 Qe5 13. Nf3 with compensation; 7...g5!? unclear) 8. Nf3 Ne5 unclear; 6. Be6 fe6 7. Nf3 Qh5 8. d4 g5!? 9. h4 (9. Qe2 g4 10. Ne1 Bh6 and Black is slightly better) h6 10. Kg1 g4 11. Nh2 Bg7 12. Bf4 Nc6 13. Be3 Nf6 unclear] **Nc6!?** [6...g5?! 7. Nf3 Qh5 8. Be6 fe6 9. Qb5; 6...Bc4 7. Qc4 c6 8. Nf3 with the idea 8...Qh6 9. Qb3 b6 10. Nd5!; 6...c6 7. Nf3 Qe7 8. d4 Bc4 9. Qc4 g5 10. e5 with initiative] **7. Nf3 Qh5** [7...Qd8?! 8. d4 Bg4 9. Qf2 and White is slightly better] **8. Nd5** [8. d4 Bg4 9. Bb5 (9. Nd5?! Nd4 10. Nd4 Be2 11. Be2 f3! and Black is superior) a6 10. Nd5!? (10. Bc6 bc6 11. Bf4 Ne7 12. Kf2 Ng6 13. Be3 Be7 equal) ab5 11. Nc7 Kd7 (11...Kd8 12. Na8 Nd4 13. Qf2 Nf3 14. gf3 Bf3 15. Rg1 Be4 16. Bf4 unclear) 12. Na8 Nd4 13. Qf2 Nf3 14. gf3 Bf3 15. Nb6 Ke6! 16. Rg1 Be4 17. Bf4 unclear] **0-0-0 9. Nf4 Bc4 10. Qc4 Qg4** [10...Qc5?! 11. Qf7! (11. Qc5 dc5 unclear) Qc2 12. Ne6 Ne5 13. Ne5 de5 (13...Nh6 14. Qf3 de5 15. Nd8 Kd8 16. Ke2 and White is superior) 14. Nd8 Qd3 15. Ke1 Qe4 16. Kd1 Nh6 17. Re1! Nf7 18. Re4 Kd8 19. d4 and White is superior] **11. Qf7** [11. d4 Nf6 12. Qf7 Ne4 13. d5 (13. Qe6 Qe6 14. Ne6 Re8 and Black is slightly better) Ne5 14. Qe6 Qe6 15. Ne6 Re8 16. Bf4 c6 17. Be5 de5 18. c4 Nc5 19. Nfg5 equal; 11. d3!? Ne5 12. Ne5 de5 13. Nd5 Bd6! (13...Rd5 14. ed5! Qd1 15. Kf2 Qh1 16. Bf4!! Qa1 17. Be5 c6 18. dc6 and White is winning) 14. Kf2 Ne7 (14...Nf6 15. Nf6 gf6 16. Be3 f5 unclear) 15. Be3 (15. Ne7 Be7 and Black is slightly better) Nd5 16. Qd5 f5 unclear] **Nh6!?** [a novelty; 11...Nf6 12. d3! with the idea Qe6 and White is slightly better] **12. Qe6 Qe6 13. Ne6 Re8** (with compensation) **14. Neg5?!** [14. Ned4?! Nd4 15. Nd4 Re4 16. Nf3 d5 17. d3 Re6 18. Bh6 Rh6 and Black is slightly better; 14. Nf8 Rhf8 15. d3 Ng4! (15...Nd4 16. Bh6 gh6 17. c4 Nf3 18. gf3 Rf3 19. Ke2 Rh3 20. Raf1 and White is slightly better) 16. h3! Nge5 17. Be3! Nb4 (17...d5 18. Bc5 Rf6 19. ed5 Nf3 20. gf3 Rf3 21. Kg2 Rf5 22. Rae1 Re1 23. Re1 Rd5 equal) 18. Ke2 Nc2 19. Rac1 Ne3 20. Ke3 equal]



**14...Ng4! 15. d3 h6 16. Nh3 d5** (with initiative) **17. Nf2** [17. ed5!? Nb4 18. c4 Nd3 19. Nf4 Nf4 (19...Ngf2!? 20. Nd3 Nd3 21. b3 Bc5 with initiative) 20. Bf4 Bc5 21. Bd2 a5! 22. h3 Nf2 23. Rh2 Ne4 24. Be1 Rhf8 with initiative; 20...Re4 and Black is slightly better] **Nf2 18. Kf2 de4 19. de4 Re4 20. Be3** [20. Re1 Bc5 21. Kf1 Re1 22. Ke1 g5! 23. h3 Nb4 24. Kd1 Rd8 25. Bd2 Be3

and Black is superior] **Bd6 21. Rae1** [21. Rad1 Rhe8 22. Rhe1 Rf8! (22...Re3?! 23. Re3 Bc5 24. Rd4! Re3 25. Ke3 Nd4 26. Nd4 Kd7 27. Ke4 equal; 22...g5 with initiative) 22. a3 g5 23. h3 Ne5 and Black is superior] **Rf8** (and Black is superior) **22. Bd2 Bc5** [22...Rc4 23. c3 Ne5 and Black is superior] **23. Kg3 Rc4 24. c3** [24. Bc3 g5! 25. h3 h5 26. Kh2 g4 27. hg4 Bd6 28. Kg1 hg4 and Black is winning] **Bd6 25. Kf2 Ne5 26. Ke2 Re4 27. Kd1 Re1 28. Ne1 Rf2** [28...Ng4 29. Nd3 Bh2 and Black is superior] **29. b3 Ng4 30. h4 Nh2** [30...Nf6! 31. Rh3 Ne4 32. Rd3 Bg3 33. h5 Rd2! (33...Rf5 34. Re3 Be1 35. Be1 Nf6 and Black is slightly better) 34. Rd2 Nc3 35. Kc2 Be1 and Black is winning] **31. c4** [time; 31. Nf3 Rg2 32. Nh2 Rh2 33. Rh2 Bh2 34. h5 Kd7 35. Ke2 Ke6 36. Be3 a6 and Black is winning]



**31...Nf1! 32. Bc3 Ng3 33. Rh3 Ne4! 34. Bg7?** [34. Re3 Nc3 35. Rc3 Ra2 (35...Bb4? 36. Nd3 equal) 36. Nc2 and Black is superior] **Rd2 35. Kc1 Ba3 36. Kb1 Rd1 37. Kc2 Rd2** [37...Rc1 38. Kd3 Nf2?! 39. Kd2 Nh3 40. gh3 with counterplay, weak point Rc1; 38...Re1 and Black is winning] **38. Kb1 Rd1 39. Kc2 Re1 40. Bh6 Rg1 41. Be3 Rg2 42. Kd3 Nf2 43. Bf2 Rf2** (and Black is winning) **44. h5 Rf7 45. Ke4 Bf8 46. Rd3 Rf6 47. Ke5 Bg7 48. Ke4 Bh6 49. Rg3 Kd7 50. Rd3 Ke7 51. Rd5 b6 52. Rd3 c6 53. Rg3 Rf4 54. Kd3 c5 55. Rg6 Rd4 56. Ke2 Rd6 57. Rg8 Kf6 58. Kf3 Ke5 59. Kg4 Rf6 60. Rd8 a5 61. a4 Ke4 62. Rd7 Rf4 63. Kg3 Rf3 64. Kg4 Rb3 65. Rd6 Rg3! 66. Kh4 Bg5 0 : 1** [Nisipeanu, Stoica]

[TOP OF PAGE](#)

[HOME](#)

[COLUMNS](#)

[LINKS](#)

[ARCHIVES](#)

[ABOUT THE CHESS CAFE](#)

[\[ChessCafecom Home Page\]](#) [\[Book Review\]](#) [\[Bulletin Board\]](#) [\[Columnists\]](#)  
[\[Endgame Study\]](#) [\[The Skittles Room\]](#) [\[Archives\]](#)  
[\[Links\]](#) [\[Online Bookstore\]](#) [\[About ChessCafecom\]](#) [\[Contact Us\]](#)

Copyright 2004 Russell Enterprises, Inc All Rights Reserved

"The Chess Cafe®" is a registered trademark of Russell Enterprises, Inc