



ChessCafe.com



COLUMNISTS



Chess Informant
Subscription Service

Alexey Shirov Annotates

Zdenko Krnic
Editor-in-Chief

Grandmaster Bagirov once told me to “remember the name of a young man whose combinational ability is equal to the famous ‘Pirate of Riga’ Mikhail Tal. His name is Alexey Shirov.” And soon afterwards, young Shirov became an excellent contributor to *Chess Informant*. One only has to recall his 47...Bh3!! against Topalov in Linares 1998, one of the most paradoxical moves in the history of chess.

His great imagination, brilliant ability and high quality preparations can be best seen in the column *The Best of Chess Informant – A. Shirov* published in *Informant 95*. While most of Shirov’s brilliant combinations derived from 1.e4 openings, his game against Volokitin from the Russian Team Championship in Sochi comes to us from 1.d4.

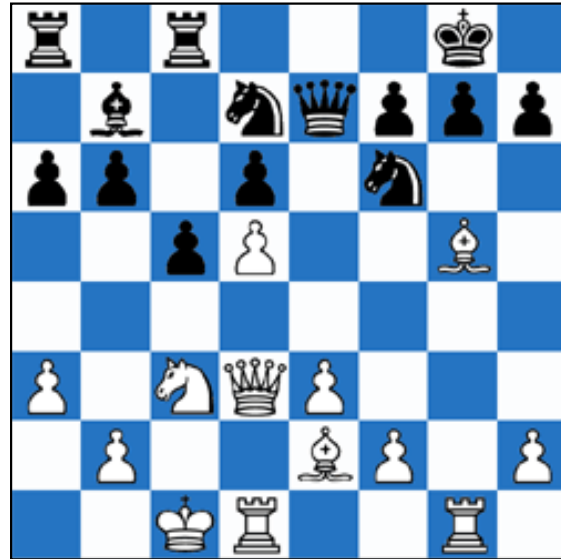
Shirov annotated the game in *Informant 96* and it contains an important opening novelty and a brilliant queen sacrifice. It is a pity that he made several mistakes in the ending, which allowed Volokitin to save the draw.

Shirov 2699 – And. Volokitin 2660 Russia 2006

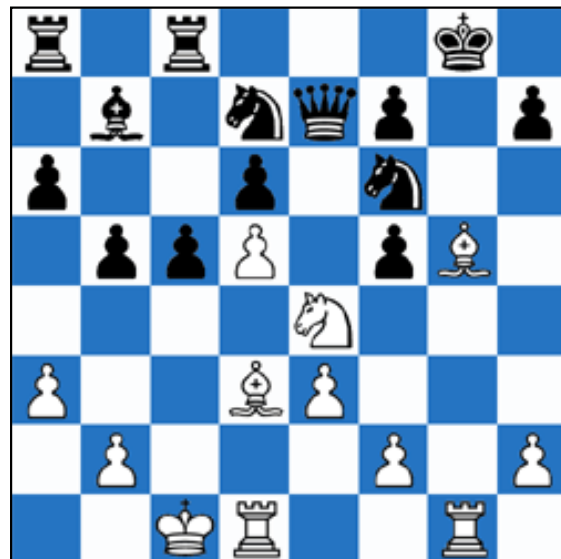
1.d4 Nf6 2.c4 e6 3.Nc3 Bb4 4.Qc2 0-0 5.a3 Bc3 6.Qc3 b6 7.Bg5 Bb7 8.e3 d6 9.Ne2 Nbd7 10.Qd3 c5 11.Nc3 Qe7



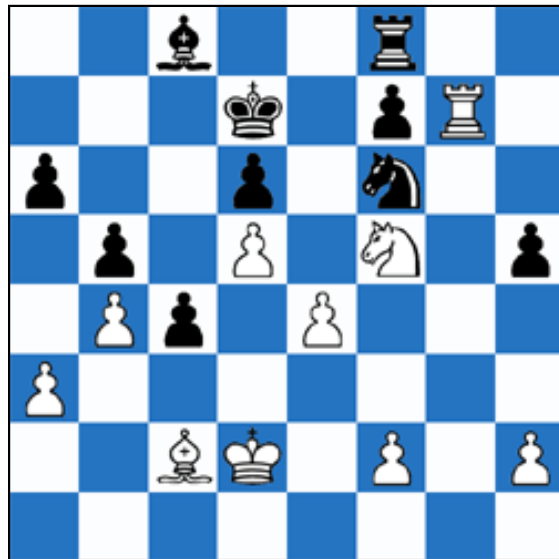
12.Be2! [a novelty; 12.Rd1 see 88/439] **Bg2 13.Rg1 Bb7 14.0-0-0** (with compensation) **Rfc8?!** [14...Kh8 15.dc5!? Nc5 16.Qd6 Qd6 17.Rd6 Nfe4 18.Ne4 Ne4 19.Rd7 and White is slightly better] **15.d5!** [15.Bh6 g6 unclear] **ed5** [15...Ne5 16.Qc2 ed5 17.cd5 and White is superior] **16.cd5 a6**



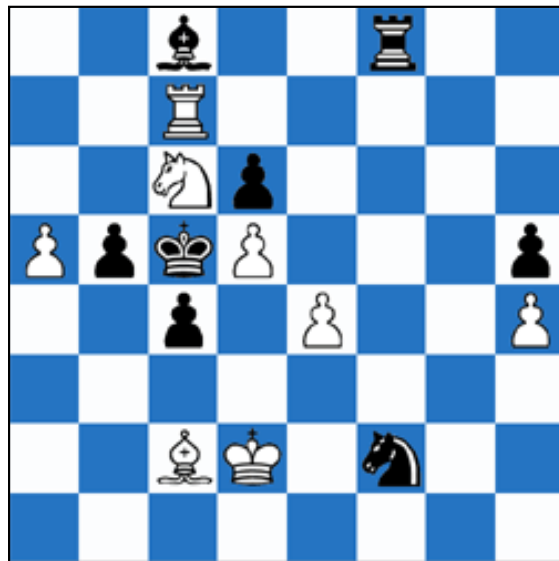
17.Qf5! [17.Bg4!? Ne5 18.Qc2 Neg4! (18...Re8 19.Bf5 Nf3 20.Bf6 Qf6 21.Rg3! and White is slightly better) 19.Rg4 Qe5 (19...Re8? 20.Rf4 and White is winning) 20.Bf6 Qf6 21.Ne4 Qe7 22.Rdg1 g6 23.Rf4 f5 24.Rf5 Rf8 25.Rfg5! and White is slightly better, with the idea 25...Rae8? 26.Rg6! hg6 27.Rg6 Kh8 28.Nd6! and White is winning] **b5 18.Bd3 g6** [18...Qe5? 19.Bf4 Qf5 20.Bf5 and White is winning] **19.Ne4!** [19.Qh3?! b4 20.Ne4 c4 21.Bc2 c3! (21...b3?! 22.Qh4! bc2 23.Rd4! Qe4 24.Re4 Ne4 25.Qe4 Nc5 26.Qf5! and White is superior) a) 22.b3 ba3 23.Kb1 (23.Nf6 Nf6 24.Kb1 Qd7 with the idea 25.Qh6 Ne8) Qe4! 24.Be4 Ne4 and Black is slightly better; b) 22.bc3 b3 23.Qh4 bc2 24.Rd4 Ne4 25.Be7 Nc3 26.Kc2 Ne2 27.Kd1 Ng1 28.Qg4 Ne5 29.Qg1 Nf3 30.Qg4 Nd4 31.Qd4 Rc7 unclear; c) 22.Qh4! cb2 23.Kb1 b3! (23...Rc2? 24.Bf6 Rc1 25.Rc1 bc1Q 26.Rc1 Nf6 27.Nf6 Kg7 28.Nh5 Kf8 29.Qe7 Ke7 30.Rc7 Kf8 31.Rb7 gh5 32.ab4 and White is superior) 24.Bd3 Kg7 unclear] **gf5**



20.Bf6? [20.Nf6! a) 20...Qf6 21.Bf6 Kf8 22.Bh4 and White is winning; b) 20...Kg7 b1) 21.Nh5 Kf8 22.Bf5! (22.Be7 Ke7 23.Bf5 Rh8 and White is slightly better) Qe5 23.Bd7 Rc7 24.Bf4 Rd7 25.Be5 de5 26.e4 and White is superior; b2) 21.Ng8!? Qg5 (21...Qe8 22.Bh6 Kh8 23.Nf6 Nf6 24.Bg7 Kg8 25.Bf6 Kf8 26.Bf5 Qd8 27.Bd8 Rd8 28.Bh7 Ke7 29.e4 and White is superior) 22.Rg5 Kh8 23.Ne7! and White is superior; c) 20...Nf6 21.Bf6 Kf8 22.Rg8! Kg8 23.Be7 f6 24.Bf5 Kf7 25.Bd6 Re8 26.Bc5 Bc8 (26...h5 27.Be6 Re6 28.de6 Ke6 29.Rd6 and White is superior) 27.Bh7 Rh8 28.Bc2 Rh2 29.Rg1 Rh6 30.Kd2 and White is superior] **Kf8 21.Be7 Ke7 22.Ng3 Nf6?** [22...Bd5? 23.Nf5 Ke6 24.Bc2 Nf6 25.e4 Be4 26.Nd6 Bc2 27.Kc2 and White is winning; 22...Ne5! 23.Bf5 (23.Nf5 Kd7 24.Be4 and White is slightly better) Rh8 24.Bh3! and White is slightly better] **23.Nf5 Kd7 24.e4 Rg8 25.Nh6 Rg1 26.Rg1** (and White is winning) **Rf8 27.Rg7 Ke7 28.Nf5 Kd7 29.Kd2 Bc8 30.b4!** [30.Ke3 Kc7 31.Nh6 Bd7 and White is superior; 30.f3 h5 31.Ke3 Ne8 32.Rh7 Kd8 33.Rh5 (33.Ng3 Nf6 34.Rh6 Ke7 and White is superior) Bf5 34.Rf5 Ke7 and White is superior] **c4 31.Bc2 h5**



32.h4? [32.f3 h4 33.a4!] **Kc7 33.Nh6 Ng4! 34.Nf7?!** [34.Ng4 hg4 35.Bd1 Kd8 36.Bg4 Bg4 37.Rg4 Rh8! and White is slightly better] **Nf2 35.Ne5 Kb6 36.a4 a5 37.ba5 Ka5 38.Nc6** [38.Rf7 Rf7 39.Nf7 ba4 40.Nd6 Ba6 unclear; 38.Nf7 Ng4 39.ab5 Kb4 unclear] **Kb6 39.a5 Kc5 40.Rc7**



40...Ng4?? [40...Bg4 41.Na7 Kb4 42.Nc6 equal] **41.Kc3??** [41.Bd1! and White is winning] **Rf3 42.Kb2 Rf2 43.Ne5 Kb4 44.Nc6 Kc5 45.Ne5 Kb4 1/2-1/2 [Shirov]**

 [TOP OF PAGE](#)

 [HOME](#)

 [COLUMNS](#)

 [LINKS](#)

 [ARCHIVES](#)

 [ABOUT THE CHESS CAFE](#)

[\[ChessCafecom Home Page\]](#) [\[Book Review\]](#) [\[Columnists\]](#)
[\[Endgame Study\]](#) [\[The Skittles Room\]](#) [\[Archives\]](#)
[\[Links\]](#) [\[Online Bookstore\]](#) [\[About ChessCafecom\]](#) [\[Contact Us\]](#)

Copyright 2006 Russell Enterprises, Inc All Rights Reserved

"**The Chess Cafe®**" is a registered trademark of Russell Enterprises, Inc