



COLUMNISTS



Chess Informant
Subscription Service

World Champion Kramnik Annotates

Zdenko Krnic

Vladimir Kramnik had an unpromising start to 2006, as he had to withdraw from the Wijk aan Zee tournament because of health problems that needed serious medical treatment. Once he had recovered and was “eager” for some chess ambience, he played at the Olympiad in Turin, but, despite his extraordinary play and the best result on the first board, Russia did not join the teams fighting for medals.

Things began to turn around at his favorite tournament, Dortmund, where he sealed his seventh triumph with a victory against Leko in the last round, proving that he gives his best performances in decisive games. Let us remember that he retained his world championship title in Brissago by also beating Leko in the last round.

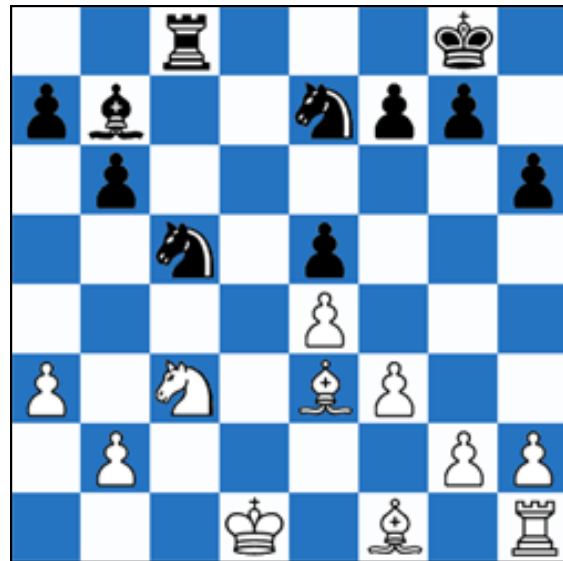
Kramnik carried his good form into the reunification match for the chess crown against Veselin Topalov, who deservedly won the title of FIDE world champion with his uncompromising style of play in San Luis. Kramnik was the strongest possible opponent for Topalov, as he had a plus score from their previous encounters.

Topalov's catastrophic start gave rise to some non-chess antics that jeopardized the continuation of the match. Kramnik lost one game by forfeit and played one game less with the white pieces, and still managed to win the match in the playoff. Thus he demonstrated that he rightfully wears the world championship crown. Not only did he win at the chessboard, but he was the moral victor as well.

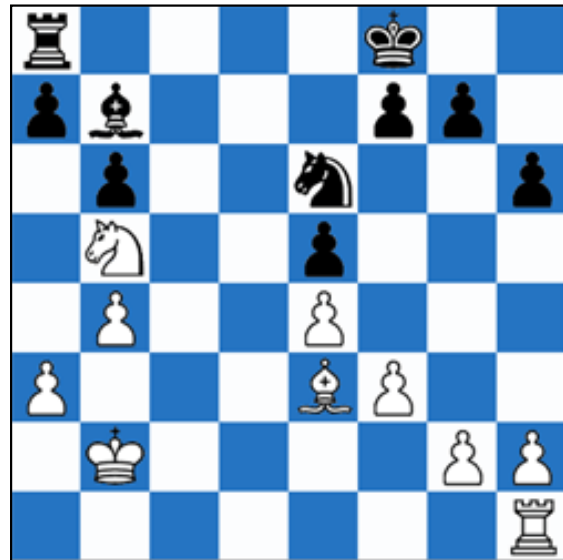
This month Kramnik annotates a decisive game against Leko from the Dortmund tournament, in which he demonstrates his greatest strength: subtle positional play and a conversion of the advantage in the ending. This was also on display in the second and fourth playoff games against Topalov. Chess Informant 97 contains three other games annotated by Kramnik, each from the Turin Olympiad.

Kramnik 2743 – Leko 2738 **Dortmund 2006**

1.d4 Nf6 2.c4 e6 3.Nc3 Bb4 4.Qc2 0-0 5.a3 Bc3 6.Qc3 b6 7.Bg5 Bb7 8.f3 h6 9.Bh4 d5 10.e3 Nbd7 11.cd5 Nd5 12.Bd8 Nc3 13.Bh4 Nd5 14.Bf2 c5 15.e4 Ne7 16.Ne2 Rac8 17.Nc3 cd4 18.Bd4 Nc5 19.Rd1 Rfd8 20.Be3 Rd1

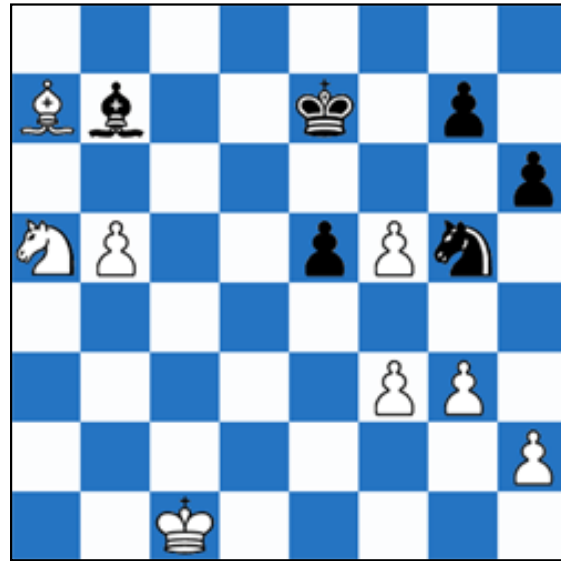
21.Kd1 e5

22.b4! [a novelty; 22.Kc2 see 96/396] **Ne6 23.Kc2 Nc6** [23...f5 24.Kb2 and White is slightly better] **24.Kb2 Kf8!** [24...Ncd4 25.Bd3 Nf4 (25...Kf8 26.Rd1 and White is slightly better) 26.Bf4 ef4 27.Rd1 and White is slightly better, with the idea 27...Nc6 28.Nd5!] **25.Bc4** [25.g3 Ncd4 26.Bh3 Rd8 equal, weak point f3; 25.Bd3 Nf4 26.Bf4 ef4 27.Rd1 Ne5 equal] **Ncd4 26.Be6** [26.Ba2 Ba6! 27.Rc1 (27.Be6 Ne6 28.b5 Bb7) g5 28.Be6 Ne6 29.b5 Bb7 equal; 26.Bd3 Nf4! 27.Bf4 ef4 28.Rd1 Nc6 29.Nd5 g5 equal] **Ne6 27.Nb5 Ra8**



28.a4! [28.Rc1 Ba6 29.Nc7 (29.Nd6 Rd8 30.Nf5 Bb5) Nc7 30.Rc7 Bf1 equal; 28.Nd6 Ba6 29.b5 Rd8! 30.Nf7 Kf7 31.ba6 Rd3 32.Re1 Nc7 equal] **Ba6** [28...Bc6!? 29.Nc3 Rd8 30.b5 Be8] **29.Na3!** [29.Nc3 Bc4! equal] **Rc8?** [29...Bd3! 30.Rd1 Rd8 a) 31.Kc3 Be2 32.Rd8 Nd8 33.Nc4 Bf1 34.g3 f6 35.f4 (35.Nd6 Bh3) Bg2 36.fe5 fe5 37.Ne5 Be4 and White is slightly better; b) 31.b5 Ke7 32.Kc3 Be2 33.Rd8 Nd8 34.Nc4 Bf1 35.g3 f6 36.f4 and White is slightly better] **30.b5 Bb7 31.Rc1 Rc1 32.Kc1** [and White is superior; NB 9/c] **Ke7 33.a5** [33.Nc4 f6 34.a5 Nc7 35.ab6 ab6 36.Na3 Na8 and White is slightly better] **ba5 34.Ba7 f5!?** [34...Nf4 35.g3 Nh3 36.Nc4 and White is

superior; 34...a4 35.Nc4 f6 36.Kb2 and White is superior] **35.ef5 Nf4 36.g3 Nh3** [36...Ne2 37.Kd2 Bf3 38.Ke3 and White is winning; 36...Nd5 37.Kd2 Kf6 (37...Bc8 38.Nc4 a4 39.g4 and White is superior) 38.Nc4 and White is superior] **37.Nc4** [37.Be3!? Bf3 (37...Bd5 38.Kb2 Kd7 39.Kc3 Bf3 40.Nc4) 38.Nc4 Kf6 (38...a4!?) 39.Nd6 (39.Na5 Kf5 40.b6 Kg4 41.Kd2 h5 42.b7 Bb7 43.Nb7 Kf3) a4 40.b6 Ng5 41.g4 Nf7 42.b7 Bb7 43.Nb7 h5] **Ng5** [37...Bf3 38.Ne5 Be4 39.Nc4 and White is superior; 37...a4 38.Be3 Bf3 39.Ne5 Be4 40.b6 Kf6 41.Nc4 Bd5 42.Bd4 Kg5 43.Nd6; 39...Bd5 and White is superior] **38.Na5** [38.f4!? ef4 39.gf4]



38...Bd5? time [38...Bf3! 39.Kd2! (39.b6 Kf6 40.b7 Bb7 41.Nb7 Kf5 42.Kd1 Kg4; 39.Be3 Nf7 40.b6 Nd8 41.Kd2 Kf6 42.g4 Bg4 43.b7 Nb7 44.Nb7 Bf5 45.Nd6) a) 39...Nf7 40.Ke3 Bd5 41.Bc5 Kf6 42.b6 Nd8 43.g4 h5 44.h3 Bg2 45.Kf2 Bh3 46.g5 Kf7 (46...Kf5 47.Be7 and White is winning) 47.Bd6 Bf5 48.Bc7 and White is winning; b) 39...Kf6 40.Ke3 Bd5 41.b6 (41.g4 h5 42.b6 hg4 43.b7 Bb7 44.Nb7 Nf3 45.Nd6 g6 equal) Kf5 42.b7 Bb7 43.Nb7 Kg4 44.Kf2! (44.Nc5 Kh3 45.Bb8 Kh2 46.Be5; 44...Nf3; 44.Bb8 Nf3 45.Nc5 Nh2 46.Be5 h5 47.Ne4 g5 equal 48.Bc7 Kf5) Kh3 45.Nd6 Kh2 46.Be3 (and White is superior) Nh3 (46...Ne6 47.Nc4 Kh3 48.Ne5 h5 49.Ng6) 47.Kf3 h5 48.Ne4 Ng1 49.Bg1 Kg1 50.Ng5 Kh2 51.Kf2 e4 52.Ne4 h4 53.g4; c) 39...Bd5 40.Ke3 Ne4 41.Bb8 (41.g4 Kf6 42.h3 h5 equal; 41.b6 Nc5 42.Bb8 Kf6 43.g4 Nd7 44.Bc7 Kg5) Kf6 42.Nc6 Kf5 43.Ne5 and White is superior] **39.b6 Nf3 40.h3!** (and White is winning) **Ng5** [40...Kf6 41.b7 Bb7 42.Nb7 Kf5 43.Nd6 Ke6 44.Ne4 Kd5 45.Nc3 Kc4 46.Kc2] **41.b7 Bb7 42.Nb7 Nh3** [NB 8/f] **43.Bb6** [43.Be3 Kf6 44.Nd6 g6 45.fg6 (45.g4 gf5 46.gf5 Nf4 47.Kd2 Nd5 48.Bf2 e4 49.Bd4 Kg5) Kg6 46.Kd2 Kh5 47.Ne4 Kg4 48.Bh6; 43.Kd2 Kf6 44.Nd6] **Kd7** [better is 43...Kf6 44.Nd6 Kg5 45.Bd8 Kg4 46.Be7! Ng1 (46...e4 47.Bf8 e3 48.Bg7 e2 49.Kd2 Kf3 50.Bc3 Kf2 51.Ne4 Kf1 52.Ke3 e1 Q 53.Be1 Ke1 54.f6; 46...Kg3 47.Bf8 e4 48.Bg7 e3 49.Bh6) 47.Kd2 Kg3 48.Bf8 Kf4 49.Bg7 Nf3 50.Kc3] **44.Be3 Ke7** [44...Kc6 45.Nc5 Kd5 46.Kd2 e4 47.Ne6 g6 48.Nf4 Nf4 49.Bf4] **45.Nc5 g6** [45...Kf6 46.g4 e4 47.Ne4 Ke5 48.Ng3 Nf4 49.Kd2] **46.fg6 Kf6 47.Bh6 Kg6** [47...Nf2 48.g7 Kf7 49.Ne6] **48.Be3** [48...Kf5 49.Kd2 Kg4 50.Ne4 Kf3 51.Kd3] **1-0** [Kramnik]



[TOP OF PAGE](#)



[HOME](#)



[COLUMNS](#)



[LINKS](#)



[ARCHIVES](#)



[ABOUT THE
CHESS CAFE](#)

[\[ChessCafecom Home Page\]](#) [\[Book Review\]](#) [\[Columnists\]](#)

[\[Endgame Study\]](#) [\[The Skittles Room\]](#) [\[Archives\]](#)

[\[Links\]](#) [\[Online Bookstore\]](#) [\[About ChessCafecom\]](#) [\[Contact Us\]](#)

Copyright 2006 Russell Enterprises, Inc All Rights Reserved

"**The Chess Cafe®**" is a registered trademark of Russell Enterprises, Inc