



COLUMNISTS

*Chess
Mazes*

Bruce Alberston



Chess Mazes

In the fall of 2004, popular chess author Bruce Alberston released a book called *Chess Mazes*, designed to help students to develop their visualization and planning skills. *Chess Mazes* was an instant success and **ChessCafe** was delighted when Bruce agreed to offer a new *Chess Maze* puzzle each week.

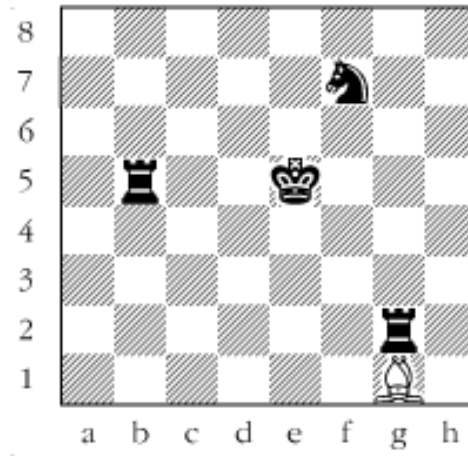
The concept is simple enough: The object is to place the black king in check in the shortest number of moves. The one restriction is that the white piece may not put itself *en prise*, i.e., on a square where it can be captured.

For those who may be interested in a more detailed introduction and overview to these puzzles, we invite you to take a look at the introduction from Bruce's book. Click [here](#) to read more, otherwise, we hope you enjoy this week's *Chess Maze* puzzle...

A Bishop Maze

The only piece allowed to move is the white *maze bishop*. And the object is to place the black king in check in the shortest number of moves. The one restriction is that the bishop may not put itself *en prise*, i.e. on a square where it can be captured. Try to figure it out in your head just by working from the diagram. If you get stuck, then of course you peek at the solution.

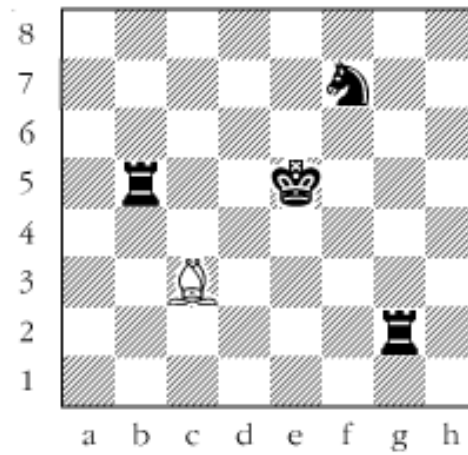
#1



Scroll down for the solution

The open checking squares are a1, c7 and c3. Neither a1 nor c7 can be reached without putting the bishop en prise. Therefore: 1 Be3 2 Bc1 3 Ba3 4 Be7 5 Bh4 6 Be1 7 Bc3†

#1a



Copyright 2005 Bruce Alberston. All Rights Reserved.

 [TOP OF PAGE](#)

 [HOME](#)

 [COLUMNS](#)

 [LINKS](#)

 [ARCHIVES](#)

 [ABOUT THE
CHESS CAFE](#)

[\[ChessCafe Home Page\]](#) [\[Book Review\]](#) [\[Columnists\]](#)
[\[Endgame Study\]](#) [\[Skittles Room\]](#) [\[Archives\]](#)
[\[Links\]](#) [\[Online Bookstore\]](#) [\[About ChessCafe\]](#) [\[Contact Us\]](#)

Copyright 2005 CyberCafes, LLC. All Rights Reserved.
"The Chess Cafe®" is a registered trademark of Russell Enterprises, Inc.