



COLUMNISTS

Chess Mazes

Bruce Alberston

Chess Mazes

In the fall of 2004, popular chess author Bruce Alberston released a book called *Chess Mazes*, designed to help students to develop their visualization and planning skills. *Chess Mazes* was an instant success and **ChessCafe** was delighted when Bruce agreed to offer a new *Chess Maze* puzzle each week.

The concept is simple enough: The object is to place the black King in check in the shortest number of moves. The one restriction is that the white piece may not put itself *en prise*, i.e., on a square where it can be captured.

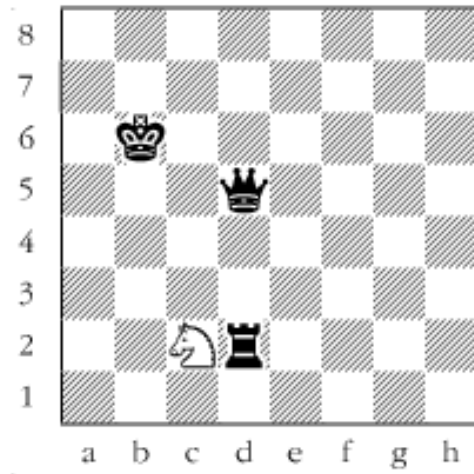
For those who may be interested in a more detailed introduction and overview to these puzzles, we invite you to take a look at the introduction from Bruce's book. Click [here](#) to read more, otherwise, we hope you enjoy this week's *Chess Maze* puzzle...



A Knight Maze

Put the black king in check with your knight and do it in the shortest number of moves. In a *knight maze* you don't have to worry about Black moving, we don't let him. But at the same time don't be careless with your knight. By that we mean don't place the knight on a square where it is subject to capture. Do that and we'll let Black take you off. Solve from the diagram and afterwards check your answer.

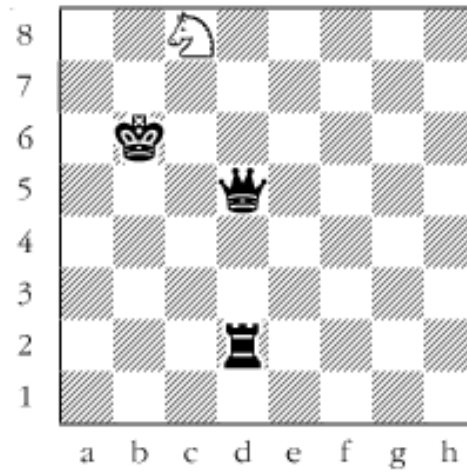
#3



Scroll down for the solution

The checking squares are a4 and c8. You can get to a4 via c3 but the problem is that you can't get to c3. So the knight heads off to the kingside, looking to reach c8. 1. Ne3 2. Ng4 3. Nf6 4. Nh7 5. Nf8 6. Ng6 7. Ne7 8. Nc8+

#3a



Copyright 2005 Bruce Alberston. All Rights Reserved.

 [TOP OF PAGE](#)

 [HOME](#)

 [COLUMNS](#)

 [LINKS](#)

 [ARCHIVES](#)

 [ABOUT THE
CHESS CAFE](#)

[\[ChessCafe Home Page\]](#) [\[Book Review\]](#) [\[Columnists\]](#)
[\[Endgame Study\]](#) [\[Skittles Room\]](#) [\[Archives\]](#)
[\[Links\]](#) [\[Online Bookstore\]](#) [\[About ChessCafe\]](#) [\[Contact Us\]](#)

Copyright 2005 CyberCafes, LLC. All Rights Reserved.
"The Chess Cafe®" is a registered trademark of Russell Enterprises, Inc.