



COLUMNISTS

Chess Mazes

Bruce Alberston

Chess Mazes

In the fall of 2004, popular chess author Bruce Alberston released a book called *Chess Mazes*, designed to help students to develop their visualization and planning skills. *Chess Mazes* was an instant success and **ChessCafe** was delighted when Bruce agreed to offer a new *Chess Maze* puzzle each week.

The concept is simple enough: The object is to place the black King in check in the shortest number of moves. The one restriction is that the white piece may not put itself *en prise*, i.e., on a square where it can be captured.

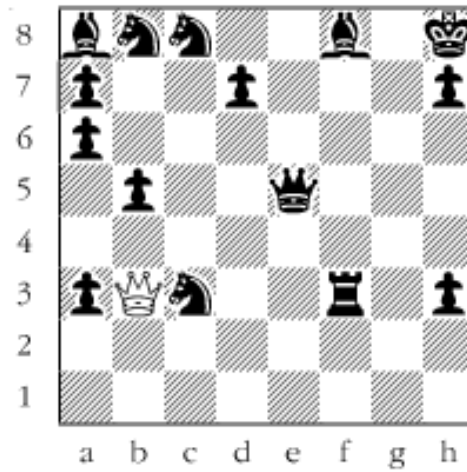
For those who may be interested in a more detailed introduction and overview to these puzzles, we invite you to take a look at the introduction from Bruce's book. Click [here](#) to read more, otherwise, we hope you enjoy this week's *Chess Maze* puzzle...

A Queen Maze

In a *queen maze* White plays to checkmate black's king in the fastest way possible. Black is not allowed to move but also White is not allowed to place the queen on a square commanded by a black unit. Mere check is not allowed but you can check out the solution if you're confused. Otherwise solve from the diagram.

#4

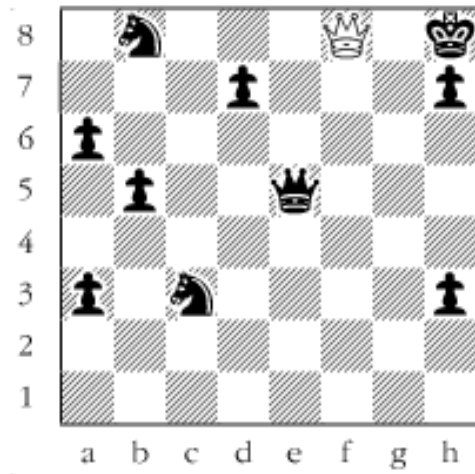




Scroll down for the solution

Mate comes when the queen lands on f8, presently guarded by the rook, which in turn is guarded by the a8-bishop. At the start the queen looks to reach the g-file. 1. Qc2 2. Qc1 3. Qg1 From here she can break into the enemy camp. 4. Qg4 5. Qh4 6. Qd8 7. Qxc8 With the knight gone, a7 becomes available and the queen can now go after the bishop. To get there she has to go the long way around, retracing her steps. 8. Qd8 9. Qh4 10. Qg4 11. Qg1 12. Qxa7 13. Qxa8 14. Qxf3 15. Qxf8#

#4a



Copyright 2005 Bruce Alberston. All Rights Reserved.

 [TOP OF PAGE](#)

 [HOME](#)

 [COLUMNS](#)

 [LINKS](#)

 [ARCHIVES](#)

 [ABOUT THE
CHESS CAFE](#)

[\[ChessCafe Home Page\]](#) [\[Book Review\]](#) [\[Columnists\]](#)
[\[Endgame Study\]](#) [\[Skittles Room\]](#) [\[Archives\]](#)
[\[Links\]](#) [\[Online Bookstore\]](#) [\[About ChessCafe\]](#) [\[Contact Us\]](#)

Copyright 2005 CyberCafes, LLC. All Rights Reserved.
"The Chess Cafe®" is a registered trademark of Russell Enterprises, Inc.