



ChessCafe.com



COLUMNISTS

## Chess Mazes

Bruce Alberston

## Chess Mazes

In the fall of 2004, popular chess author Bruce Alberston released a book called *Chess Mazes*, designed to help students to develop their visualization and planning skills. *Chess Mazes* was an instant success and **ChessCafe** was delighted when Bruce agreed to offer a new *Chess Maze* puzzle each week.

The concept is simple enough: The object is to place the black King in check in the shortest number of moves. The one restriction is that the white piece may not put itself *en prise*, i.e., on a square where it can be captured.

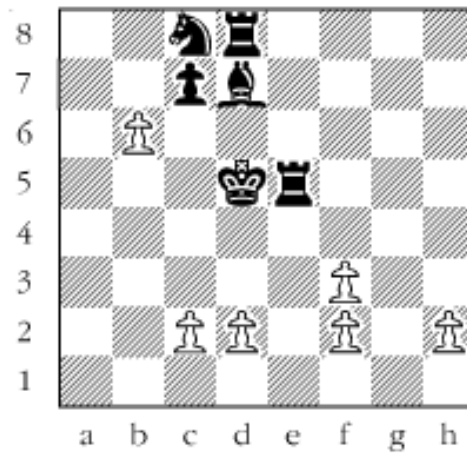
For those who may be interested in a more detailed introduction and overview to these puzzles, we invite you to take a look at the introduction from Bruce's book. Click [here](#) to read more, otherwise, we hope you enjoy this week's *Chess Maze* puzzle...

## A Pawn Maze

In a *pawn maze* White can move any or all of his pawns in his effort to checkmate black's king in the shortest number of moves. He can also promote but cannot leave the promotion square. Nor is he allowed to place his pawns (or promoted pawns) on squares where they can be captured. You have some leeway in the order of moves but the moves in the solution have to be played at some turn or another. One further thing—the play is for checkmate so check is not allowed.

#5

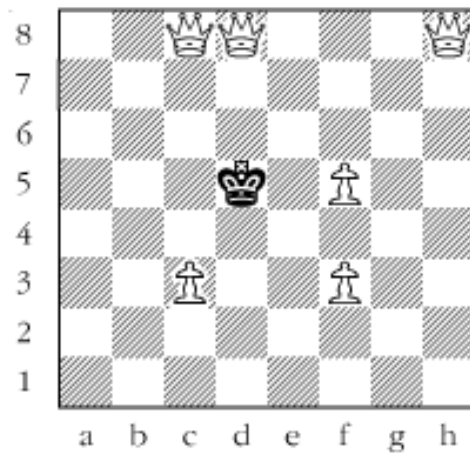




*Scroll down for the solution*

First get the b6-pawn out of take. And don't advance to b8—a dead end. 1. bxc7 2. cxd8/Q Step two is get the rook. 3. c3 4. d4 5. f4 6. dxe5 Next promote the h-pawn so e5 is guarded and the f-pawn can move up. 7. h4 8. h5 9. h6 10. h7 11. h8/Q 12. f5 Now the e-pawn is ready to advance. 13. e6 14. exd7 15. f3 The last detail, guard e4. 16. dxc8/Q#

**#5a**



---

Copyright 2005 Bruce Alberston. All Rights Reserved.



[TOP OF PAGE](#)



[HOME](#)



[COLUMNS](#)



[LINKS](#)



[ARCHIVES](#)



[ABOUT THE  
CHESS CAFE](#)

[\[ChessCafe Home Page\]](#) [\[Book Review\]](#) [\[Columnists\]](#)

[\[Endgame Study\]](#) [\[Skittles Room\]](#) [\[Archives\]](#)

[\[Links\]](#) [\[Online Bookstore\]](#) [\[About ChessCafe\]](#) [\[Contact Us\]](#)

Copyright 2005 CyberCafes, LLC. All Rights Reserved.

"**The Chess Cafe®**" is a registered trademark of Russell Enterprises, Inc.