



ChessCafe.com



C O L U M N I S T S

Chess Mazes

Bruce Alberston



Chess Mazes

In the fall of 2004, popular chess author Bruce Alberston released a book called *Chess Mazes*, designed to help students to develop their visualization and planning skills. *Chess Mazes* was an instant success and **ChessCafe** was delighted when Bruce agreed to offer a new *Chess Maze* puzzle each week.

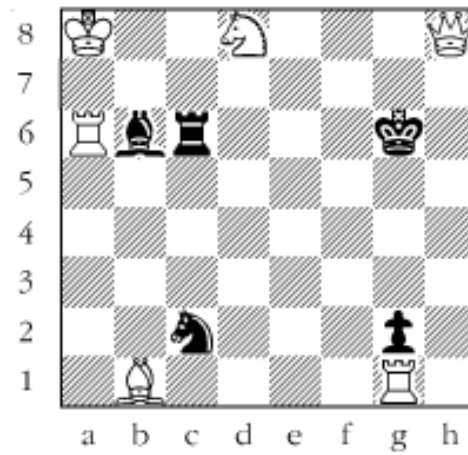
The concept is simple enough: The object is to place the black King in check in the shortest number of moves. The one restriction is that the white piece may not put itself *en prise*, i.e., on a square where it can be captured.

For those who may be interested in a more detailed introduction and overview to these puzzles, we invite you to take a look at the introduction from Bruce's book. Click [here](#) to read more, otherwise, we hope you enjoy this week's *Chess Maze* puzzle...

A King Maze

White plays to mate Black moving only his king and in the shortest number of moves. No black pieces are allowed to move and neither are the white helpers, pieces other than the king. The helpers are allowed to take part in the mate, in fact they have to, but they do so from their starting squares in the diagram. When moving the white king, please don't place him in check. That's a no-no. So too is putting Black in check.

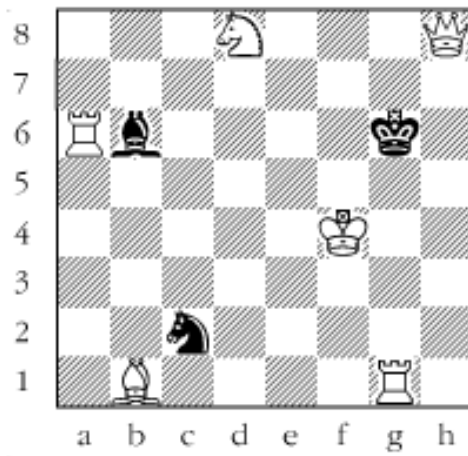
#6



Scroll down for the solution

Mate has to come from a discovered check. 1. Kb7 2. Kxc6
There's no mate with the a6-rook so just be content with
pinning the bishop. 3. Kd5 4. Ke4 5. Kf3 6. Kxg2 7. Kg3 8.
Kf4# Mate with the b1-bishop is possible but it takes nine
moves.

#6a



Copyright 2005 Bruce Alberston. All Rights Reserved.

 [TOP OF PAGE](#)

 [HOME](#)

 [COLUMNS](#)

 [LINKS](#)

 [ARCHIVES](#)

 [ABOUT THE
CHESS CAFE](#)

[\[ChessCafe Home Page\]](#) [\[Book Review\]](#) [\[Columnists\]](#)
[\[Endgame Study\]](#) [\[Skittles Room\]](#) [\[Archives\]](#)
[\[Links\]](#) [\[Online Bookstore\]](#) [\[About ChessCafe\]](#) [\[Contact Us\]](#)

Copyright 2005 CyberCafes, LLC. All Rights Reserved.
"The Chess Cafe®" is a registered trademark of Russell Enterprises, Inc.