



ChessCafe.com



C O L U M N I S T S

## Chess Mazes

Bruce Alberston

## Chess Mazes

In the fall of 2004, popular chess author Bruce Alberston released a book called *Chess Mazes*, designed to help students to develop their visualization and planning skills. *Chess Mazes* was an instant success and **ChessCafe** was delighted when Bruce agreed to offer a new *Chess Maze* puzzle each week.

The concept is simple enough: The object is to place the black King in check in the shortest number of moves. The one restriction is that the white piece may not put itself *en prise*, i.e., on a square where it can be captured.

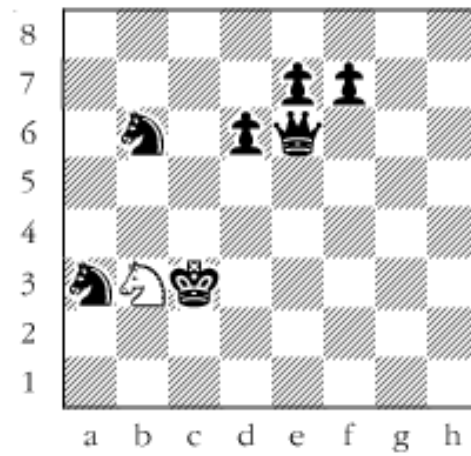
For those who may be interested in a more detailed introduction and overview to these puzzles, we invite you to take a look at the introduction from Bruce's book. Click [here](#) to read more, otherwise, we hope you enjoy this week's *Chess Maze* puzzle...

## A Knight Maze

White to move his knight around and put Black in check. He has to do it in the shortest number of moves and without placing his knight where it can be captured. Black has to sit by and watch as we don't let him move.

#9

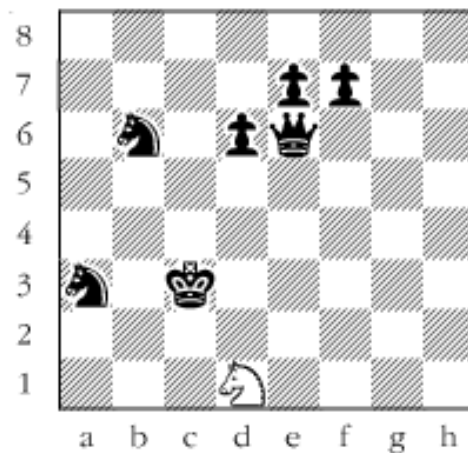




*Scroll down for the solution*

The knight has to break out to the kingside and then work its way to d1. 1. Na5 2. Nc6 The start of a turning manoeuver. 3. Nb8 4. Na6 5. Nc7 6. Ne8 7. Ng7 8. Nh5 9. Ng3 Another turning manoeuver. 10. Nh1 11. Nf2 12. Nd1#

**#9a**



---

Copyright 2005 Bruce Alberston. All Rights Reserved.

 [TOP OF PAGE](#)

 [HOME](#)

 [COLUMNS](#)

 [LINKS](#)

 [ARCHIVES](#)

 [ABOUT THE  
CHESS CAFE](#)

[\[ChessCafe Home Page\]](#) [\[Book Review\]](#) [\[Columnists\]](#)  
[\[Endgame Study\]](#) [\[Skittles Room\]](#) [\[Archives\]](#)  
[\[Links\]](#) [\[Online Bookstore\]](#) [\[About ChessCafe\]](#) [\[Contact Us\]](#)

Copyright 2005 CyberCafes, LLC. All Rights Reserved.  
"The Chess Cafe®" is a registered trademark of Russell Enterprises, Inc.