



COLUMNISTS

Chess Mazes

Bruce Alberston



Chess Mazes

In the fall of 2004, popular chess author Bruce Alberston released a book called *Chess Mazes*, designed to help students to develop their visualization and planning skills. *Chess Mazes* was an instant success and **ChessCafe** was delighted when Bruce agreed to offer a new *Chess Maze* puzzle each week.

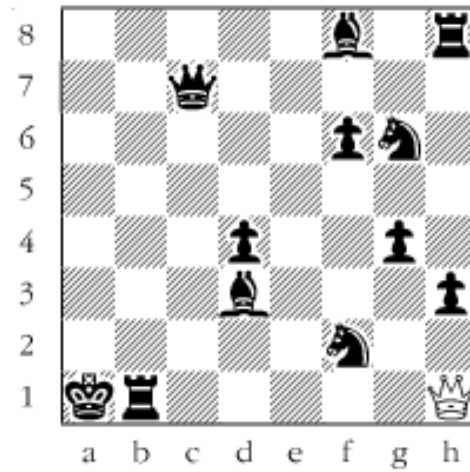
The concept is simple enough: The object is to place the black King in check in the shortest number of moves. The one restriction is that the white piece may not put itself *en prise*, i.e., on a square where it can be captured.

For those who may be interested in a more detailed introduction and overview to these puzzles, we invite you to take a look at the introduction from Bruce's book. Click [here](#) to read more, otherwise, we hope you enjoy this week's *Chess Maze* puzzle...

A Queen Maze

Checkmate the black king with your *Maze Queen* using the shortest route. Be careful not to give check as check is not allowed. Also don't place the queen on a square where it can be captured. As for Black, he can't move.

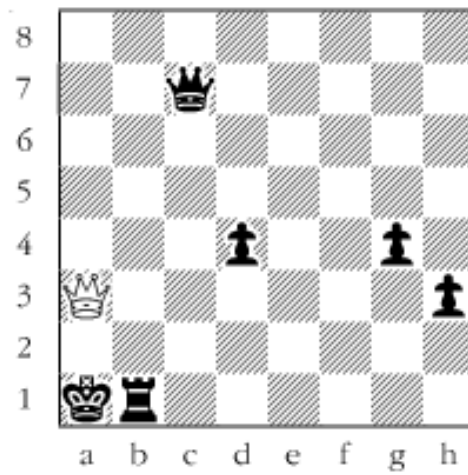
#15



Scroll down for the solution

White has to collect the f8-bishop before mate can ensue. In turn this means all the intermediate defenders must disappear starting with the knight at f2. 1. Qd5 2. Qe6 3. Qxf6 4. Qxf2 5. Qd2 6. Qxd3 7. Qxg6 8. Qf6 9. Qxh8 10. Qxf8 11. Qa3#

#15a



Copyright 2006 Bruce Alberston. All Rights Reserved.



[TOP OF PAGE](#)



[HOME](#)



[COLUMNS](#)



[LINKS](#)



[ARCHIVES](#)



[ABOUT THE
CHESS CAFE](#)

[\[ChessCafe Home Page\]](#) [\[Book Review\]](#) [\[Columnists\]](#)

[\[Endgame Study\]](#) [\[Skittles Room\]](#) [\[Archives\]](#)

[\[Links\]](#) [\[Online Bookstore\]](#) [\[About ChessCafe\]](#) [\[Contact Us\]](#)

Copyright 2006 CyberCafes, LLC. All Rights Reserved.

"**The Chess Cafe®**" is a registered trademark of Russell Enterprises, Inc.