



ChessCafe.com



C O L U M N I S T S

Chess Mazes

Bruce Alberston

Chess Mazes

In the fall of 2004, popular chess author Bruce Alberston released a book called *Chess Mazes*, designed to help students to develop their visualization and planning skills. *Chess Mazes* was an instant success and **ChessCafe** was delighted when Bruce agreed to offer a new *Chess Maze* puzzle each week.

The concept is simple enough: The object is to place the black King in check in the shortest number of moves. The one restriction is that the white piece may not put itself *en prise*, i.e., on a square where it can be captured.

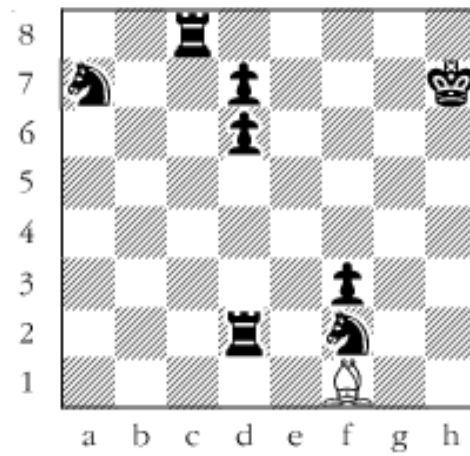
For those who may be interested in a more detailed introduction and overview to these puzzles, we invite you to take a look at the introduction from Bruce's book. Click [here](#) to read more, otherwise, we hope you enjoy this week's *Chess Maze* puzzle...

A Bishop Maze

The job at hand is to place black's king in check. Do it in the shortest way possible, at the same time taking care not to put the bishop on a square where Black can take it. If he can't take the bishop, Black can't move. That's the nature of the maze.

#18

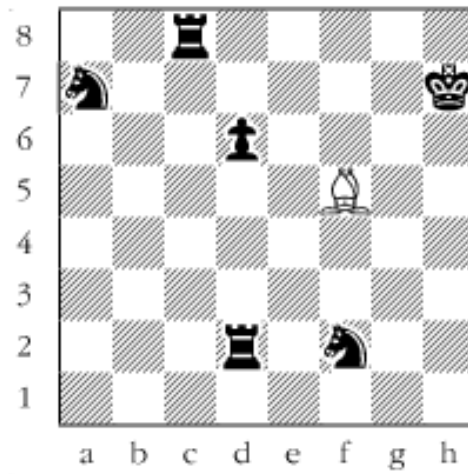




Scroll down for the solution

It's pretty clear that check must come on f5. How does the bishop get there? Through lots of twisting and turning. 1. Ba6 2. Bb7 3. Bxf3 4. Bh5 5. Bf7 6. Bb3 7. Ba4 8. Bxd7 9. Bf5#

#18a



Copyright 2005 Bruce Alberston. All Rights Reserved.

 [TOP OF PAGE](#)

 [HOME](#)

 [COLUMNS](#)

 [LINKS](#)

 [ARCHIVES](#)

 [ABOUT THE
CHESS CAFE](#)

[\[ChessCafe Home Page\]](#) [\[Book Review\]](#) [\[Columnists\]](#)
[\[Endgame Study\]](#) [\[Skittles Room\]](#) [\[Archives\]](#)
[\[Links\]](#) [\[Online Bookstore\]](#) [\[About ChessCafe\]](#) [\[Contact Us\]](#)

Copyright 2005 CyberCafes, LLC. All Rights Reserved.
"The Chess Cafe®" is a registered trademark of Russell Enterprises, Inc.