



## C O L U M N I S T S

## Chess Mazes

Bruce Alberston

## Chess Mazes

In the fall of 2004, popular chess author Bruce Alberston released a book called *Chess Mazes*, designed to help students to develop their visualization and planning skills. *Chess Mazes* was an instant success and **ChessCafe** was delighted when Bruce agreed to offer a new *Chess Maze* puzzle each week.

The concept is simple enough: The object is to place the black King in check in the shortest number of moves. The one restriction is that the white piece may not put itself *en prise*, i.e., on a square where it can be captured.

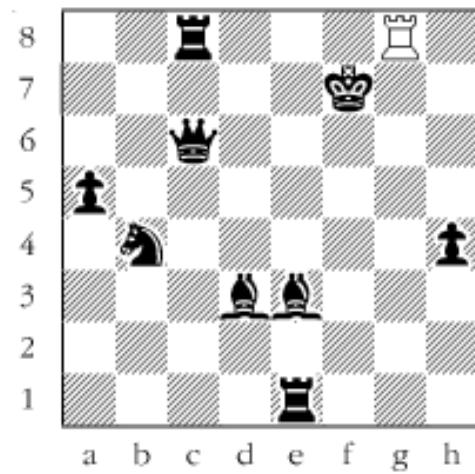
For those who may be interested in a more detailed introduction and overview to these puzzles, we invite you to take a look at the introduction from Bruce's book. Click [here](#) to read more, otherwise, we hope you enjoy this week's *Chess Maze* puzzle...

## A Rook Maze

White to play and check the black king with his rook. Black may not move unless he can take the white rook. That means the rook can't play to a capturable square. One further rule. The check has to be brought about in the shortest way.

#19

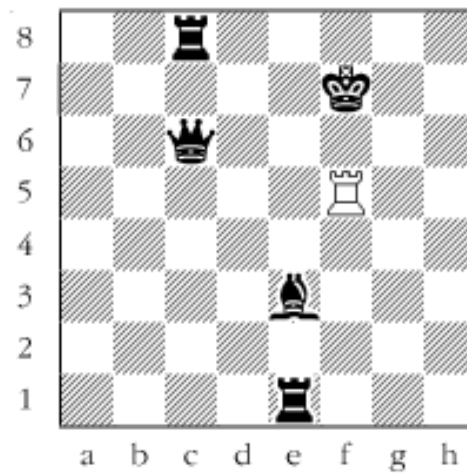




*Scroll down for the solution*

The operation requires the use of only three ranks. 1. Rg4 2. Rxh4 3. Rh5 4. Rxa5 5. Ra3 6. Rb3 7. Rxb4 8. Rb3 9. Rxd3 10. Ra3 11. Ra5 12. Rf5+

**#19a**



---

Copyright 2005 Bruce Alberston. All Rights Reserved.



[TOP OF PAGE](#)



[HOME](#)



[COLUMNS](#)



[LINKS](#)



[ARCHIVES](#)



[ABOUT THE  
CHESS CAFE](#)

[\[ChessCafe Home Page\]](#) [\[Book Review\]](#) [\[Columnists\]](#)

[\[Endgame Study\]](#) [\[Skittles Room\]](#) [\[Archives\]](#)

[\[Links\]](#) [\[Online Bookstore\]](#) [\[About ChessCafe\]](#) [\[Contact Us\]](#)

Copyright 2005 CyberCafes, LLC. All Rights Reserved.  
"The Chess Cafe®" is a registered trademark of Russell Enterprises, Inc.