



ChessCafe.com

C O L U M N I S T S

Chess Mazes

Bruce Alberston



Chess Mazes

In the fall of 2004, popular chess author Bruce Alberston released a book called *Chess Mazes*, designed to help students to develop their visualization and planning skills. *Chess Mazes* was an instant success and **ChessCafe** was delighted when Bruce agreed to offer a new *Chess Maze* puzzle each week.

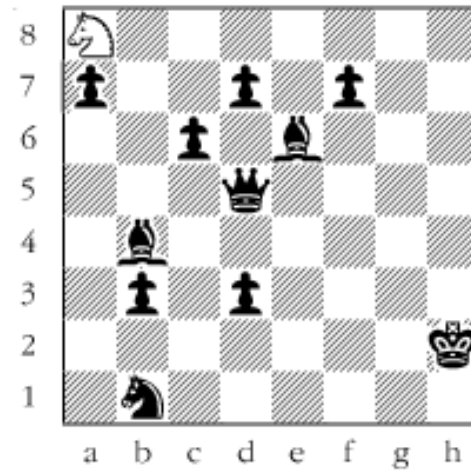
The concept is simple enough: The object is to place the black King in check in the shortest number of moves. The one restriction is that the white piece may not put itself *en prise*, i.e., on a square where it can be captured.

For those who may be interested in a more detailed introduction and overview to these puzzles, we invite you to take a look at the introduction from Bruce's book. Click [here](#) to read more, otherwise, we hope you enjoy this week's *Chess Maze* puzzle...

A Knight Maze

The goal is to check the black king by manoeuvring the white knight along safe squares. Do it in the shortest way and don't worry about Black moving. He can't unless you hand him the knight through carelessness.

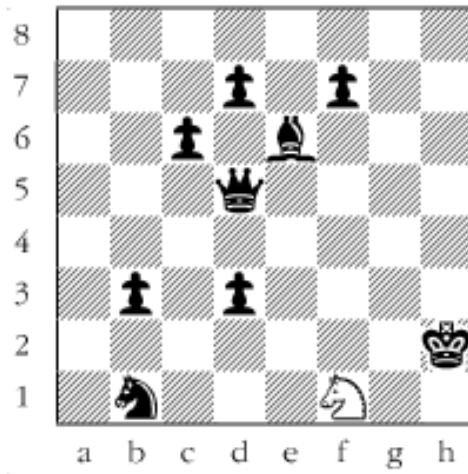
#20



Scroll down for the solution

There's no breakout from the upper right hand quadrant, but the knight can turn around. First the bishop has to be removed.
 1. Nc7 2. Na6 3. Nxb4 4. Na6 5. Nc7 6. Ne8 7. Nf6 8. Ng8 9. Ne7 The turn around. 10. Nc8 11. Nxa7 The breakout comes on the queenside. 12. Nc8 13. Nb6 14. Na4 15. Nb2 16. Nd1 17. Ne3 18. Nf1+

#20a



Copyright 2006 Bruce Alberston. All Rights Reserved.

 [TOP OF PAGE](#)

 [HOME](#)

 [COLUMNS](#)

 [LINKS](#)

 [ARCHIVES](#)

 [ABOUT THE
CHESS CAFE](#)

[\[ChessCafe Home Page\]](#) [\[Book Review\]](#) [\[Columnists\]](#)
[\[Endgame Study\]](#) [\[Skittles Room\]](#) [\[Archives\]](#)
[\[Links\]](#) [\[Online Bookstore\]](#) [\[About ChessCafe\]](#) [\[Contact Us\]](#)

Copyright 2005 CyberCafes, LLC. All Rights Reserved.
"The Chess Cafe®" is a registered trademark of Russell Enterprises, Inc.