



ChessCafe.com



C O L U M N I S T S

Chess Mazes

Bruce Alberston



Chess Mazes

In the fall of 2004, popular chess author Bruce Alberston released a book called *Chess Mazes*, designed to help students to develop their visualization and planning skills. *Chess Mazes* was an instant success and **ChessCafe** was delighted when Bruce agreed to offer a new *Chess Maze* puzzle each week.

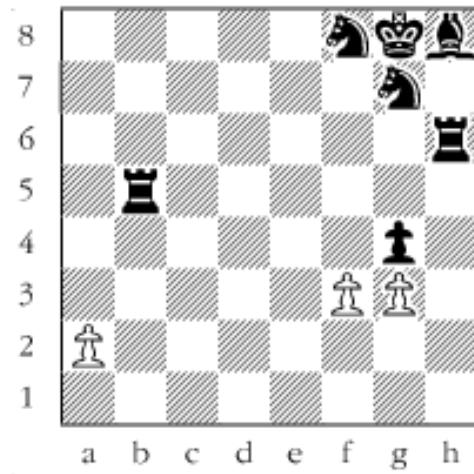
The concept is simple enough: The object is to place the black King in check in the shortest number of moves. The one restriction is that the white piece may not put itself *en prise*, i.e., on a square where it can be captured.

For those who may be interested in a more detailed introduction and overview to these puzzles, we invite you to take a look at the introduction from Bruce's book. Click [here](#) to read more, otherwise, we hope you enjoy this week's *Chess Maze* puzzle...

A Pawn Maze

Checkmate the black king with your pawns in the fewest number of moves. No checks are allowed and no placing pawns on squares where they can be captured. Promotion is possible but you can't leave the promotion square. Black can't move. Move order can be varied but don't get careless and leave pawns *en prise*.

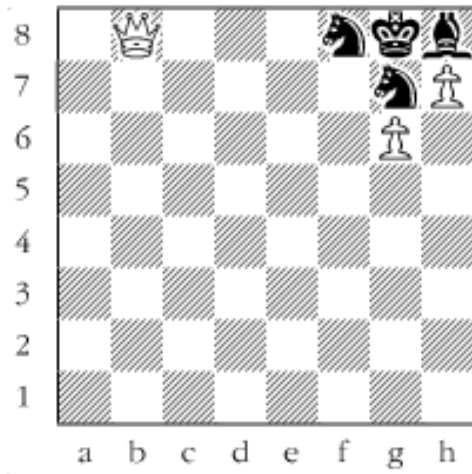
#22



Scroll down for the solution

Mate with an unpromoted pawn. Of course you can't get by without promoting something. 1. fxf4 2. a4 3. axb5 4. g5 5. gxf4 6. b6 7. b7 8. b8/Q Rook is also acceptable. 9. g4 10. g5 11. g6 12. h7#

#22a



Copyright 2006 Bruce Alberston. All Rights Reserved.



[TOP OF PAGE](#)



[HOME](#)



[COLUMNS](#)



[LINKS](#)



[ARCHIVES](#)



[ABOUT THE
CHESS CAFE](#)

[\[ChessCafe Home Page\]](#) [\[Book Review\]](#) [\[Columnists\]](#)

[\[Endgame Study\]](#) [\[Skittles Room\]](#) [\[Archives\]](#)

[\[Links\]](#) [\[Online Bookstore\]](#) [\[About ChessCafe\]](#) [\[Contact Us\]](#)

Copyright 2005 CyberCafes, LLC. All Rights Reserved.

"**The Chess Cafe®**" is a registered trademark of Russell Enterprises, Inc.