



## C O L U M N I S T S

## Chess Mazes

Bruce Alberston



## Chess Mazes

In the fall of 2004, popular chess author Bruce Alberston released a book called *Chess Mazes*, designed to help students to develop their visualization and planning skills. *Chess Mazes* was an instant success and **ChessCafe** was delighted when Bruce agreed to offer a new *Chess Maze* puzzle each week.

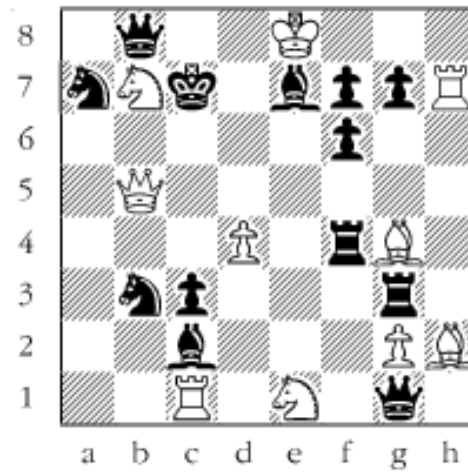
The concept is simple enough: The object is to place the black King in check in the shortest number of moves. The one restriction is that the white piece may not put itself *en prise*, i.e., on a square where it can be captured.

For those who may be interested in a more detailed introduction and overview to these puzzles, we invite you to take a look at the introduction from Bruce's book. Click [here](#) to read more, otherwise, we hope you enjoy this week's *Chess Maze* puzzle...

## A King Maze

White can make legal moves with his king but the rest of his army is stuck on the diagram squares. The same goes for the black army. The object is mate (no checks) brought about in the fewest number of moves.

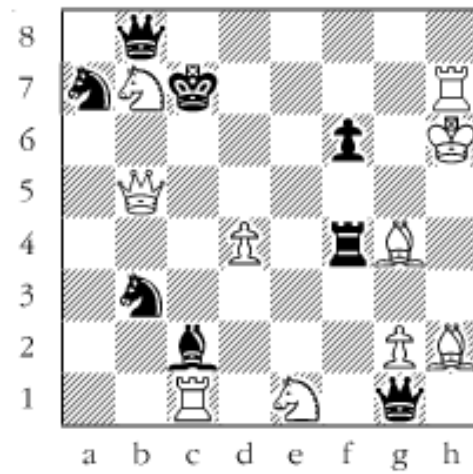
#23



*Scroll down for the solution*

Mate comes after taking a bishop. Which one? 1. Kxf7  
 Apparently not the e7-bishop. 2. Kxg7 3. Kh6 4. Kh5 5. Kh4 6.  
 Kxg3 7. Kh4 8. Kh5 9. Kh6 10. Kg7 11. Kf7 12. Ke6 13. Kd5  
 14. Kc4 15. Kxc3 16. Kc4 What's this? Not the c2-bishop?. 17.  
 Kd5 18. Ke6 19. Kxe7 Of course. I knew it all along. 20. Kf7  
 21. Kg7 22. Kh6#

**#23a**



---

Copyright 2006 Bruce Alberston. All Rights Reserved.

 [TOP OF PAGE](#)

 [HOME](#)

 [COLUMNS](#)

 [LINKS](#)

 [ARCHIVES](#)

 [ABOUT THE  
CHESS CAFE](#)

[\[ChessCafe Home Page\]](#) [\[Book Review\]](#) [\[Columnists\]](#)  
[\[Endgame Study\]](#) [\[Skittles Room\]](#) [\[Archives\]](#)  
[\[Links\]](#) [\[Online Bookstore\]](#) [\[About ChessCafe\]](#) [\[Contact Us\]](#)

Copyright 2005 CyberCafes, LLC. All Rights Reserved.  
"The Chess Cafe®" is a registered trademark of Russell Enterprises, Inc.