



C O L U M N I S T S

Chess Mazes

Bruce Alberston



Chess Mazes

In the fall of 2004, popular chess author Bruce Alberston released a book called *Chess Mazes*, designed to help students to develop their visualization and planning skills. *Chess Mazes* was an instant success and **ChessCafe** was delighted when Bruce agreed to offer a new *Chess Maze* puzzle each week.

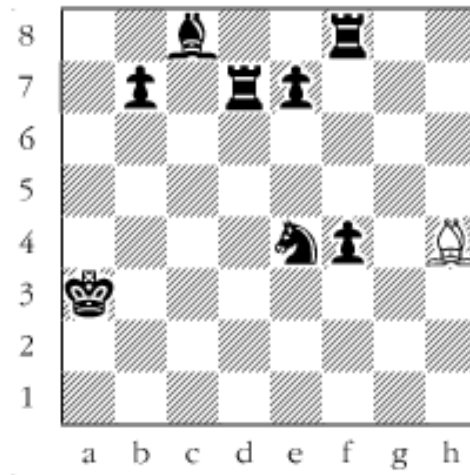
The concept is simple enough: The object is to place the black King in check in the shortest number of moves. The one restriction is that the white piece may not put itself *en prise*, i.e., on a square where it can be captured.

For those who may be interested in a more detailed introduction and overview to these puzzles, we invite you to take a look at the introduction from Bruce's book. Click [here](#) to read more, otherwise, we hope you enjoy this week's *Chess Maze* puzzle...

A Bishop Maze

The object is to check the king with the bishop. Black can't stop you unless you go to a square commanded by one of his men. That means you have unlimited moves with your bishop. But limit them anyway and check in the shortest number.

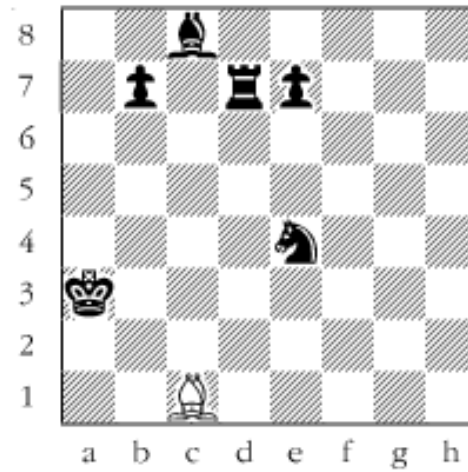
#24



Scroll down for the solution

Examination reveals one open checking square, c1. To get there the bishop has to go through the f4-pawn, guarded by the rook. Enough said. 1. Be1 2. Ba5 3. Bb6 4. Ba7 5. Bb8 6. Be5 7. Bg7 8. Bxf8 9. Bh6 10. Bxf4 11. Bc1+

#24a



Copyright 2006 Bruce Alberston. All Rights Reserved.



[TOP OF PAGE](#)



[HOME](#)



[COLUMNS](#)



[LINKS](#)



[ARCHIVES](#)



[ABOUT THE
CHESS CAFE](#)

[\[ChessCafe Home Page\]](#) [\[Book Review\]](#) [\[Columnists\]](#)

[\[Endgame Study\]](#) [\[Skittles Room\]](#) [\[Archives\]](#)

[\[Links\]](#) [\[Online Bookstore\]](#) [\[About ChessCafe\]](#) [\[Contact Us\]](#)

Copyright 2005 CyberCafes, LLC. All Rights Reserved.

"**The Chess Cafe®**" is a registered trademark of Russell Enterprises, Inc.