



## C O L U M N I S T S

*Chess  
Mazes*

Bruce Alberston



## Chess Mazes

In the fall of 2004, popular chess author Bruce Alberston released a book called *Chess Mazes*, designed to help students to develop their visualization and planning skills. *Chess Mazes* was an instant success and **ChessCafe** was delighted when Bruce agreed to offer a new *Chess Maze* puzzle each week.

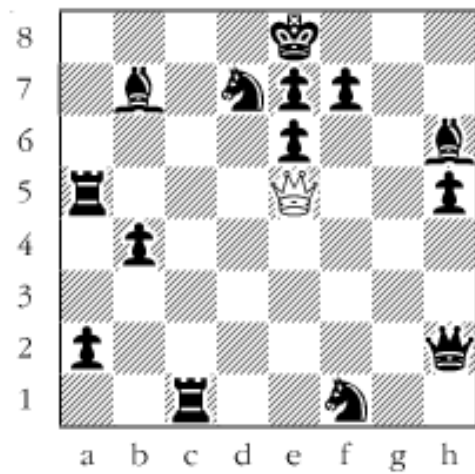
The concept is simple enough: The object is to place the black King in check in the shortest number of moves. The one restriction is that the white piece may not put itself *en prise*, i.e., on a square where it can be captured.

For those who may be interested in a more detailed introduction and overview to these puzzles, we invite you to take a look at the introduction from Bruce's book. Click [here](#) to read more, otherwise, we hope you enjoy this week's *Chess Maze* puzzle...

## A Queen Maze

In a *Queen Maze* you have to checkmate the black king, using your you know what. No checks allowed and no placing the queen on a square where it is subject to capture. Black is an observer unable to move, hoping you won't find the mate. But he's wrong. You can find it and in the shortest number of moves.

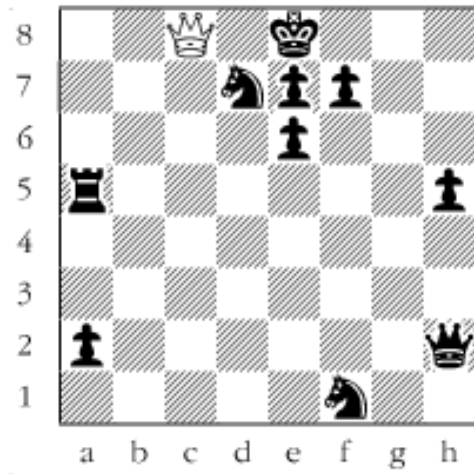
#27



*Scroll down for the solution*

1. Qd4 Taking at a5 extends the solution. 2. Qd3 3. Qh7 4. Qxh6 5. Qxc1 6. Qe1 7. Qxb4 8. Qxb7 9. Qc8#

**#27a**



---

Copyright 2006 Bruce Alberston. All Rights Reserved.

 [TOP OF PAGE](#)

 [HOME](#)

 [COLUMNS](#)

 [LINKS](#)

 [ARCHIVES](#)

 [ABOUT THE  
CHESS CAFE](#)

[\[ChessCafe Home Page\]](#) [\[Book Review\]](#) [\[Columnists\]](#)  
[\[Endgame Study\]](#) [\[Skittles Room\]](#) [\[Archives\]](#)  
[\[Links\]](#) [\[Online Bookstore\]](#) [\[About ChessCafe\]](#) [\[Contact Us\]](#)

Copyright 2005 CyberCafes, LLC. All Rights Reserved.  
"The Chess Cafe®" is a registered trademark of Russell Enterprises, Inc.