



ChessCafe.com



COLUMNISTS

Chess Mazes

Bruce Alberston

Chess Mazes

In the fall of 2004, popular chess author Bruce Alberston released a book called *Chess Mazes*, designed to help students to develop their visualization and planning skills. *Chess Mazes* was an instant success and **ChessCafe** was delighted when Bruce agreed to offer a new *Chess Maze* puzzle each week.

The concept is simple enough: The object is to place the black King in check in the shortest number of moves. The one restriction is that the white piece may not put itself *en prise*, i.e., on a square where it can be captured.

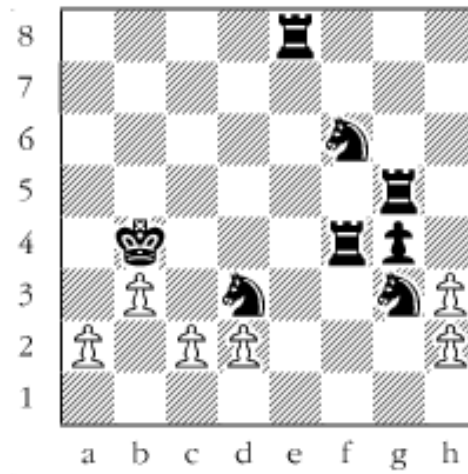
For those who may be interested in a more detailed introduction and overview to these puzzles, we invite you to take a look at the introduction from Bruce's book. Click [here](#) to read more, otherwise, we hope you enjoy this week's *Chess Maze* puzzle...

A Pawn Maze

Mate with the pawns, preferably in the fewest number of moves. If you promote and you probably will, you're stuck on the promotion square. No passing checks and no placing (leaving) pawns on squares where they can be captured. Black is a silent spectator unable to move. You have some leeway with the sequence of moves but there's really only one shortest solution.

#28

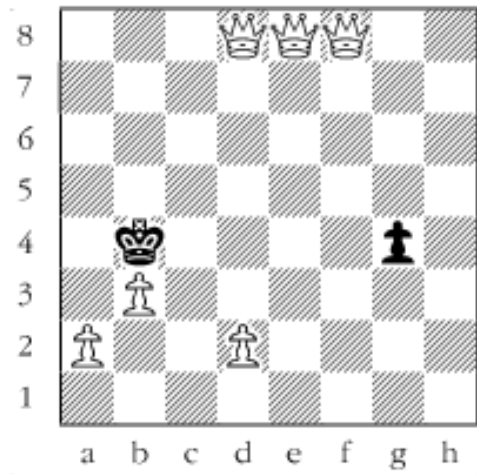




Scroll down for the solution

Of the six white pawns, three remain unmoved. 1. h4 2. cxd3 3. hxg3 4. gxf4 5. hxg5 The right capture. 6. gxf6 7. f7 8. d4 9. d5 10. d6 11. d7 12. fxe8/Q Another right capture. 13. d8/Q 14. f5 15. f6 16. f7 17. f8/Q#

#28a



Copyright 2006 Bruce Alberston. All Rights Reserved.



[TOP OF PAGE](#)



[HOME](#)



[COLUMNS](#)



[LINKS](#)



[ARCHIVES](#)



[ABOUT THE
CHESS CAFE](#)

[\[ChessCafe Home Page\]](#) [\[Book Review\]](#) [\[Columnists\]](#)

[\[Endgame Study\]](#) [\[Skittles Room\]](#) [\[Archives\]](#)

[\[Links\]](#) [\[Online Bookstore\]](#) [\[About ChessCafe\]](#) [\[Contact Us\]](#)

Copyright 2005 CyberCafes, LLC. All Rights Reserved.

"**The Chess Cafe®**" is a registered trademark of Russell Enterprises, Inc.