



ChessCafe.com



COLUMNISTS

Chess Mazes

Bruce Alberston

Chess Mazes

In the fall of 2004, popular chess author Bruce Alberston released a book called *Chess Mazes*, designed to help students to develop their visualization and planning skills. *Chess Mazes* was an instant success and **ChessCafe** was delighted when Bruce agreed to offer a new *Chess Maze* puzzle each week.

The concept is simple enough: The object is to place the black King in check in the shortest number of moves. The one restriction is that the white piece may not put itself *en prise*, i.e., on a square where it can be captured.

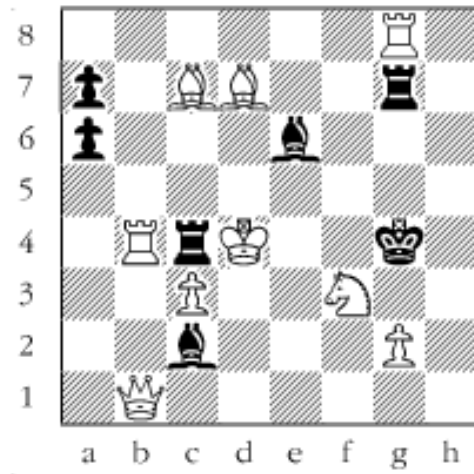
For those who may be interested in a more detailed introduction and overview to these puzzles, we invite you to take a look at the introduction from Bruce's book. Click [here](#) to read more, otherwise, we hope you enjoy this week's *Chess Maze* puzzle...

A King Maze

All the pieces in the diagram are frozen except for the white *Maze King*. Moving the king around, legal moves mind you, the king must bring about checkmate (no checks) in the shortest way possible. If you don't know what a discovered mate looks like, you're in trouble. But if you do, it should be child's play.

#29

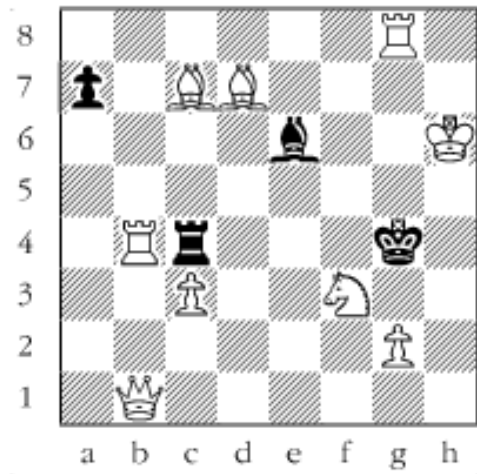




Scroll down for the solution

Step one is to capture a light squared bishop. 1. Ke3 2. Kd2 3. Kxc2 Lets the queen guard f5. 4. Kb3 5. Ka4 6. Ka5 7. Kxa6 8. Kb7 9. Kc8 10. Kd8 11. Ke8 12. Kf8 13. Kxg7 14. Kh6#
Discovering mate while stopping escape at h5#

#29a



Copyright 2006 Bruce Alberston. All Rights Reserved.



[TOP OF PAGE](#)



[HOME](#)



[COLUMNS](#)



[LINKS](#)



[ARCHIVES](#)



[ABOUT THE
CHESS CAFE](#)

[\[ChessCafe Home Page\]](#) [\[Book Review\]](#) [\[Columnists\]](#)

[\[Endgame Study\]](#) [\[Skittles Room\]](#) [\[Archives\]](#)

[\[Links\]](#) [\[Online Bookstore\]](#) [\[About ChessCafe\]](#) [\[Contact Us\]](#)

Copyright 2005 CyberCafes, LLC. All Rights Reserved.

"**The Chess Cafe®**" is a registered trademark of Russell Enterprises, Inc.