



C O L U M N I S T S

*Chess
Mazes*

Bruce Alberston



Chess Mazes

In the fall of 2004, popular chess author Bruce Alberston released a book called *Chess Mazes*, designed to help students to develop their visualization and planning skills. *Chess Mazes* was an instant success and **ChessCafe** was delighted when Bruce agreed to offer a new *Chess Maze* puzzle each week.

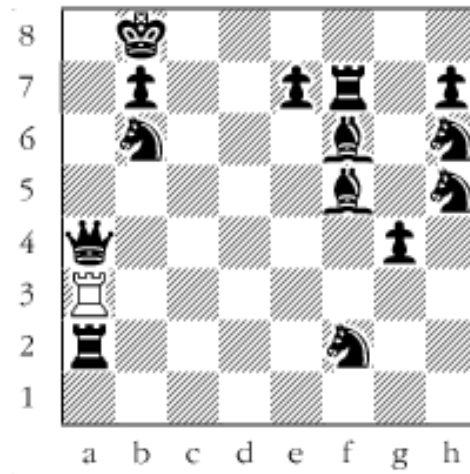
The concept is simple enough: The object is to place the black King in check in the shortest number of moves. The one restriction is that the white piece may not put itself *en prise*, i.e., on a square where it can be captured.

For those who may be interested in a more detailed introduction and overview to these puzzles, we invite you to take a look at the introduction from Bruce's book. Click [here](#) to read more, otherwise, we hope you enjoy this week's *Chess Maze* puzzle...

A Rook Maze

Check to the black king without putting your rook *en prise* or on a square where it can be captured. Do it in the fastest way. Bear in mind that in a *Rook Maze* the only move Black can play is something takes rook. Other than that he's a spectator.

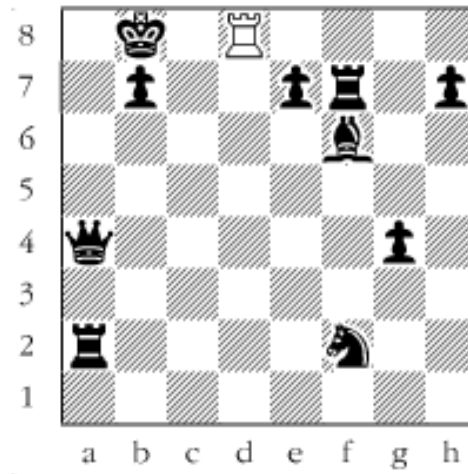
#31



Scroll down for the solution

Counting a3, all eight files come into play. 1. Re3 2. Re1 3. Rg1 4. Rg2 5. Rh2 6. Rxh5 7. Rxh6 8. Rh5 9. Rxf5 With the bishop gone the rook gains access to b1 and can go after the b6-knight. 10. Rc5 11. Rc1 12. Rb1 13. Rxb6 Now d5 becomes available. 14. Rb1 15. Rc1 16. Rc5 17. Rd5 18. Rd8+

#31a



Copyright 2006 Bruce Alberston. All Rights Reserved.



[TOP OF PAGE](#)



[HOME](#)



[COLUMNS](#)



[LINKS](#)



[ARCHIVES](#)



[ABOUT THE
CHESS CAFE](#)

[\[ChessCafe Home Page\]](#) [\[Book Review\]](#) [\[Columnists\]](#)

[\[Endgame Study\]](#) [\[Skittles Room\]](#) [\[Archives\]](#)

[\[Links\]](#) [\[Online Bookstore\]](#) [\[About ChessCafe\]](#) [\[Contact Us\]](#)

Copyright 2005 CyberCafes, LLC. All Rights Reserved.

"**The Chess Cafe®**" is a registered trademark of Russell Enterprises, Inc.