



C O L U M N I S T S

*Chess
Mazes*

Bruce Alberston



Chess Mazes

In the fall of 2004, popular chess author Bruce Alberston released a book called *Chess Mazes*, designed to help students to develop their visualization and planning skills. *Chess Mazes* was an instant success and **ChessCafe** was delighted when Bruce agreed to offer a new *Chess Maze* puzzle each week.

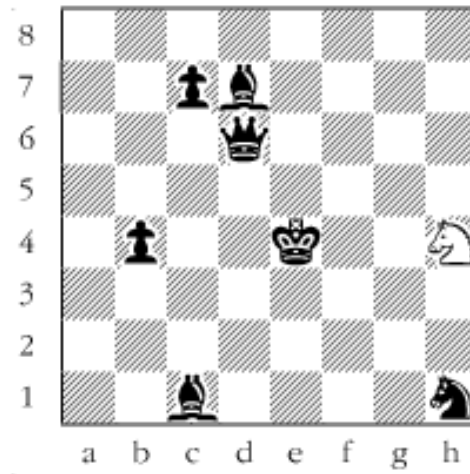
The concept is simple enough: The object is to place the black King in check in the shortest number of moves. The one restriction is that the white piece may not put itself *en prise*, i.e., on a square where it can be captured.

For those who may be interested in a more detailed introduction and overview to these puzzles, we invite you to take a look at the introduction from Bruce's book. Click [here](#) to read more, otherwise, we hope you enjoy this week's *Chess Maze* puzzle...

A Knight Maze

In a *knight maze* there's only one moving piece, the white knight. Try to put the black king in check without placing the knight on a square commanded by one of black's forces. It can be done. Also try and do it using the least number of moves.

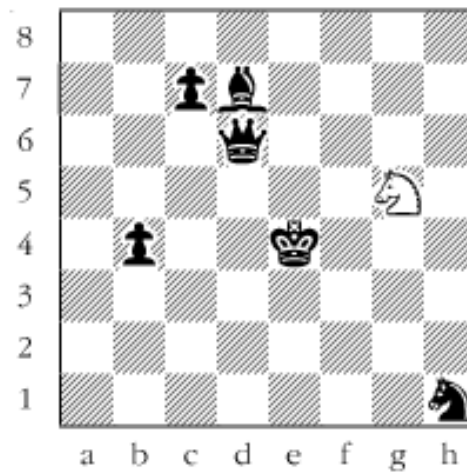
#32



Scroll down for the solution

Get rid of the c1-bishop and the knight can check at g5. 1. Ng2
 2. Ne1 3. Nc2 4. Na1 5. Nb3 6. Nxc1 The bishop is gone, now
 get to g5. You have to head queenside. 7. Nb3 8. Na5 9. Nb7
 10. Nd8 11. Nf7 12. Ng5+

#32a



Copyright 2006 Bruce Alberston. All Rights Reserved.



[TOP OF PAGE](#)



[HOME](#)



[COLUMNS](#)



[LINKS](#)



[ARCHIVES](#)



[ABOUT THE
CHESS CAFE](#)

[\[ChessCafe Home Page\]](#) [\[Book Review\]](#) [\[Columnists\]](#)

[\[Endgame Study\]](#) [\[Skittles Room\]](#) [\[Archives\]](#)

[\[Links\]](#) [\[Online Bookstore\]](#) [\[About ChessCafe\]](#) [\[Contact Us\]](#)

Copyright 2005 CyberCafes, LLC. All Rights Reserved.

"**The Chess Cafe®**" is a registered trademark of Russell Enterprises, Inc.