



C O L U M N I S T S

Chess Mazes

Bruce Alberston

Chess Mazes

In the fall of 2004, popular chess author Bruce Alberston released a book called *Chess Mazes*, designed to help students to develop their visualization and planning skills. *Chess Mazes* was an instant success and **ChessCafe** was delighted when Bruce agreed to offer a new *Chess Maze* puzzle each week.

The concept is simple enough: The object is to place the black King in check in the shortest number of moves. The one restriction is that the white piece may not put itself *en prise*, i.e., on a square where it can be captured.

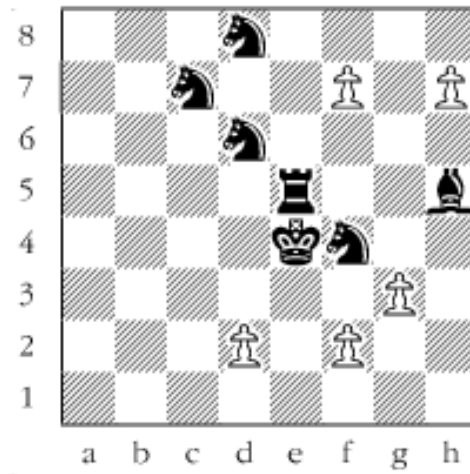
For those who may be interested in a more detailed introduction and overview to these puzzles, we invite you to take a look at the introduction from Bruce's book. Click [here](#) to read more, otherwise, we hope you enjoy this week's *Chess Maze* puzzle...

A Pawn Maze

Checkmate with the pawns. Recall Black can't move except to take a hanging pawn. Pawns can promote but are stuck on their promotion squares. The shortest number of moves is the most desirable. And check is not permitted.



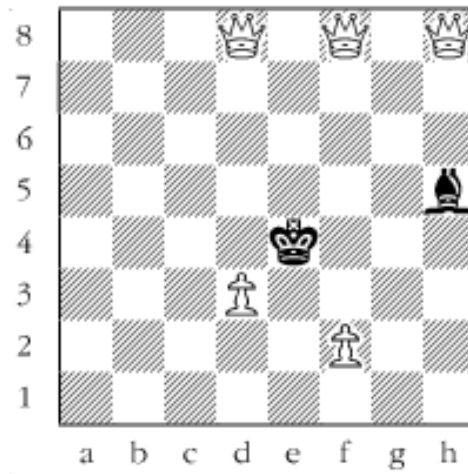
#47



Scroll down for the solution

The f7-pawn is en prise so white's first is forced. Second and third moves are interchangeable, then the rest of the sequence is forced. 1. f8/Q 2. h8/Q 3. gxf4 4. fxe5 5. exd6 6. dxc7 7. cxd8/Q 8. d3#

#47a



Copyright 2006 Bruce Alberston. All Rights Reserved.



[TOP OF PAGE](#)



[HOME](#)



[COLUMNS](#)



[LINKS](#)



[ARCHIVES](#)



[ABOUT THE
CHESS CAFE](#)

[\[ChessCafe Home Page\]](#) [\[Book Review\]](#) [\[Columnists\]](#)

[\[Endgame Study\]](#) [\[Skittles Room\]](#) [\[Archives\]](#)

[\[Links\]](#) [\[Online Bookstore\]](#) [\[About ChessCafe\]](#) [\[Contact Us\]](#)

Copyright 2006 CyberCafes, LLC. All Rights Reserved.
"The Chess Cafe®" is a registered trademark of Russell Enterprises, Inc.