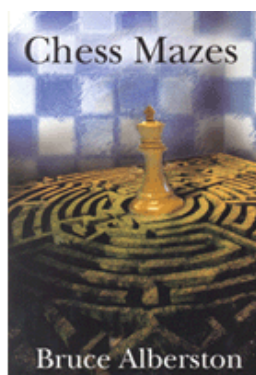




COLUMNISTS

Chess
Mazes

Bruce Alberston



CHESS THEATRE

Play through and download the games
from ChessCafe.com in the [DGT Game Viewer](#).

[The Complete
DGT Product Line](#)

Chess Mazes

In the fall of 2004, popular chess author Bruce Alberston released a book called [Chess Mazes](#), designed to help students to develop their visualization and planning skills. *Chess Mazes* was an instant success and [ChessCafe.com](#) was delighted when Bruce agreed to offer a new *Chess Maze* puzzle each week.

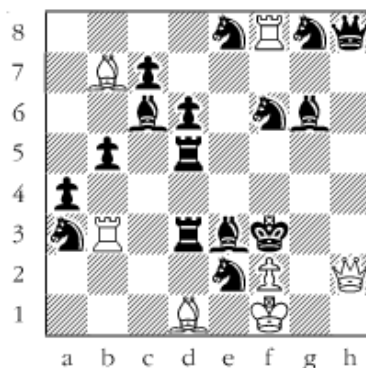
The concept is simple enough: the object is to place the black king in check in the shortest number of moves. The one restriction is that the white piece may not put itself *en prise*, i.e., on a square where it can be captured.

For those who may be interested in a more detailed introduction and overview to these puzzles, we invite you to take a look at the introduction from Bruce's book. Click [here](#) to read more, otherwise, we hope you enjoy this week's *Chess Maze* puzzle...

A Queen Maze

Checkmate the black king moving only the white maze queen. You can't let your queen be captured. The shortest solution is best.

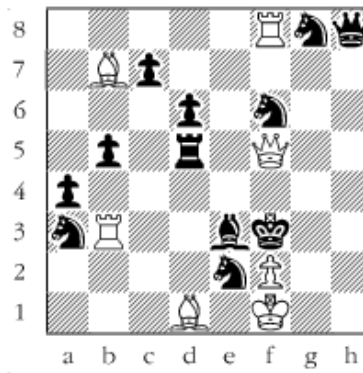
#106



Scroll down for the solution

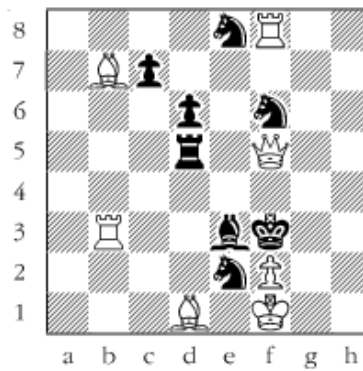
Taking h8 extends the solution. 1 Qg1 2 Qxg6 3 Qf7 4 Qe6 5 Qc8 6 Qa8 7 Qa6 8 Qxc6 9 Qxe8 10 Qg6 11 Qxd3 12 Qf5#.

#106a



Remove the a4-pawn and you can take the black queen, also mating in twelve. 1 Qxh8 2 Qxg8 3 Qxg6 4 Qh7 5 Qh4 6 Qb4 7 Qxa3 8 Qa6 9 Qxc6 10 Qxb5 (or 10 Qc2) 11 Qxd3 12 Qf5#.

#106b



© 2007 Bruce Alberston. All Rights Reserved.

 [TOP OF PAGE](#)

 [HOME](#)

 [COLUMNS](#)

 [LINKS](#)

 [ARCHIVES](#)

 [ABOUT THE CHESS CAFE](#)

[\[ChessCafe Home Page\]](#) [\[Book Review\]](#) [\[Columnists\]](#)
[\[Endgame Study\]](#) [\[The Skittles Room\]](#) [\[Archives\]](#)
[\[Links\]](#) [\[Online Bookstore\]](#) [\[About ChessCafe.com\]](#) [\[Contact Us\]](#)

© 2007 CyberCafes, LLC. All Rights Reserved.
"ChessCafe.com®" is a registered trademark of Russell Enterprises, Inc.