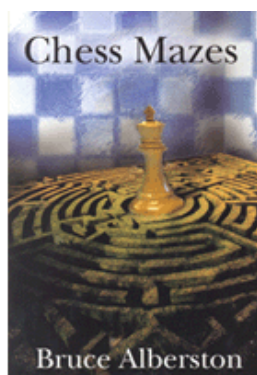




## COLUMNISTS

Chess  
Mazes

Bruce Alberston



## CHESS THEATRE

Play through and download the games  
from [ChessCafe.com](http://ChessCafe.com) in the [DGT Game Viewer](#).

[The Complete  
DGT Product Line](#)

## Chess Mazes

In the fall of 2004, popular chess author Bruce Alberston released a book called [Chess Mazes](#), designed to help students to develop their visualization and planning skills. *Chess Mazes* was an instant success and [ChessCafe.com](#) was delighted when Bruce agreed to offer a new *Chess Maze* puzzle each week.

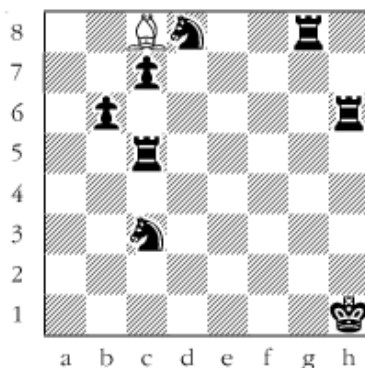
The concept is simple enough: the object is to place the black king in check in the shortest number of moves. The one restriction is that the white piece may not put itself *en prise*, i.e., on a square where it can be captured.

For those who may be interested in a more detailed introduction and overview to these puzzles, we invite you to take a look at the introduction from Bruce's book. Click [here](#) to read more, otherwise, we hope you enjoy this week's *Chess Maze* puzzle...

## A Bishop Maze

Put the black king in check with your bishop. Stay off squares where the bishop can be captured and try for the shortest solution.

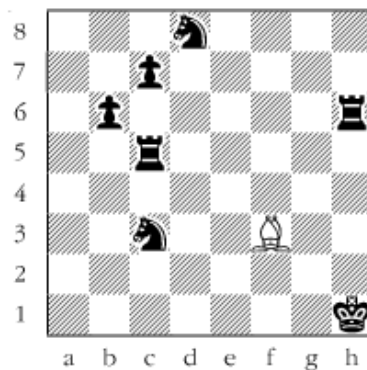
#109



*Scroll down for the solution*

1 Ba6 2 Bd3 3 Bc2 4 Bb3 5 Bxg8 6 Bb3 7 Bc2 8 Bd3 9 Ba6 10 Bc8 11 Bg4 12 Bf3+.

#109a



---

© 2007 Bruce Alberston. All Rights Reserved.

---

 [TOP OF PAGE](#)

 [HOME](#)

 [COLUMNS](#)

 [LINKS](#)

 [ARCHIVES](#)

 [ABOUT THE  
CHESS CAFE](#)

[\[ChessCafe Home Page\]](#) [\[Book Review\]](#) [\[Columnists\]](#)  
[\[Endgame Study\]](#) [\[The Skittles Room\]](#) [\[Archives\]](#)  
[\[Links\]](#) [\[Online Bookstore\]](#) [\[About ChessCafe.com\]](#) [\[Contact Us\]](#)

© 2007 CyberCafes, LLC. All Rights Reserved.  
"ChessCafe.com®" is a registered trademark of Russell Enterprises, Inc.