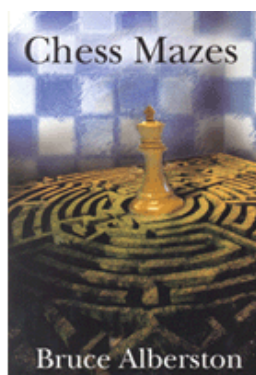




## COLUMNISTS

Chess  
Mazes

Bruce Alberston



## CHESS THEATRE

Play through and download the games  
from [ChessCafe.com](http://ChessCafe.com) in the [DGT Game Viewer](#).

[The Complete  
DGT Product Line](#)

## Chess Mazes

In the fall of 2004, popular chess author Bruce Alberston released a book called [Chess Mazes](#), designed to help students to develop their visualization and planning skills. *Chess Mazes* was an instant success and [ChessCafe.com](#) was delighted when Bruce agreed to offer a new *Chess Maze* puzzle each week.

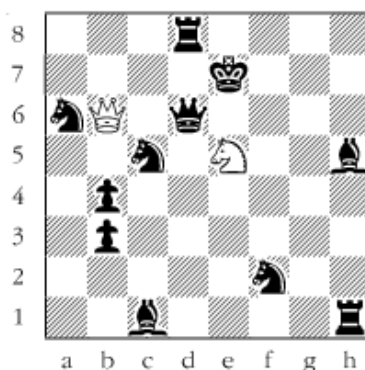
The concept is simple enough: the object is to place the black king in check in the shortest number of moves. The one restriction is that the white piece may not put itself *en prise*, i.e., on a square where it can be captured.

For those who may be interested in a more detailed introduction and overview to these puzzles, we invite you to take a look at the introduction from Bruce's book. Click [here](#) to read more, otherwise, we hope you enjoy this week's *Chess Maze* puzzle...

## A Queen Maze

The play is for mate and the white queen delivers it, aided by the helping knight (which can't move). The fastest way is the best and don't put the queen *en prise*.

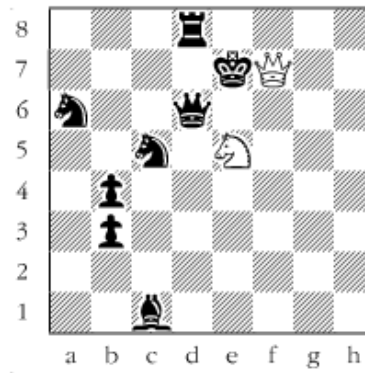
#112



*Scroll down for the solution*

1 Qa5 2 Qa1 3 Qb1 4 Qf5 5 Qxf2 6 Qg2 7 Qxh1 8 Qxh5 9 Qf7#.

#112a



---

© 2007 Bruce Alberston. All Rights Reserved.

---

 [TOP OF PAGE](#)

 [HOME](#)

 [COLUMNS](#)

 [LINKS](#)

 [ARCHIVES](#)

 [ABOUT THE  
CHESS CAFE](#)

[\[ChessCafe Home Page\]](#) [\[Book Review\]](#) [\[Columnists\]](#)  
[\[Endgame Study\]](#) [\[The Skittles Room\]](#) [\[Archives\]](#)  
[\[Links\]](#) [\[Online Bookstore\]](#) [\[About ChessCafe.com\]](#) [\[Contact Us\]](#)

© 2007 CyberCafes, LLC. All Rights Reserved.  
"ChessCafe.com®" is a registered trademark of Russell Enterprises, Inc.