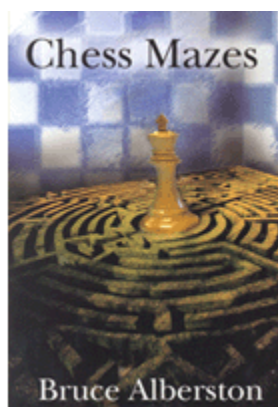




COLUMNISTS

Chess Mazes

Bruce Alberston



CHESSTHEATRE

Play through and download the games
from ChessCafe.com in the [DGT Game
Viewer](#).

[The Complete
DGT Product Line](#)

Chess Mazes

In the fall of 2004, popular chess author Bruce Alberston released a book called [Chess Mazes](#), designed to help students to develop their visualization and planning skills. *Chess Mazes* was an instant success and **ChessCafe.com** was delighted when Bruce agreed to offer a new *Chess Maze* puzzle each week.

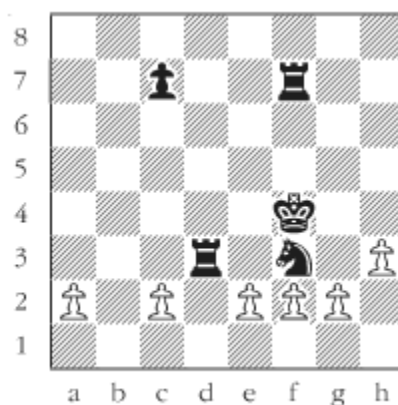
The concept is simple enough: the object is to place the black king in check in the shortest number of moves. The one restriction is that the white piece may not put itself *en prise*, i.e., on a square where it can be captured.

For those who may be interested in a more detailed introduction and overview to these puzzles, we invite you to take a look at the introduction from Bruce's book. Click [here](#) to read more, otherwise, we hope you enjoy this week's *Chess Maze* puzzle...

A Pawn Maze

The white pawns must construct a checkmate (check is not allowed) to the black king without placing themselves on squares where they may be captured. They can promote but cannot leave the promotion squares.

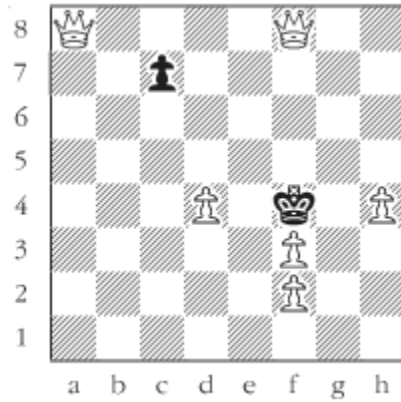
#113



[Scroll down for the solution](#)

1 cxd3 2 exf3 3 a4 4 a5 5 a6 6 a7 7 a8Q 8 h4 9 g4 10 g5 11 g6 12 gxf7 13 d4 14 f8Q#.

#113a



© 2007 Bruce Alberston. All Rights Reserved.



[TOP OF PAGE](#)



[HOME](#)



[COLUMNS](#)



[LINKS](#)



[ARCHIVES](#)



[ABOUT THE
CHESS CAFE](#)

[\[ChessCafe Home Page\]](#) [\[Book Review\]](#) [\[Columnists\]](#)
[\[Endgame Study\]](#) [\[The Skittles Room\]](#) [\[Archives\]](#)
[\[Links\]](#) [\[Online Bookstore\]](#) [\[About ChessCafe.com\]](#) [\[Contact Us\]](#)

© 2007 CyberCafes, LLC. All Rights Reserved.
"ChessCafe.com®" is a registered trademark of Russell Enterprises, Inc.